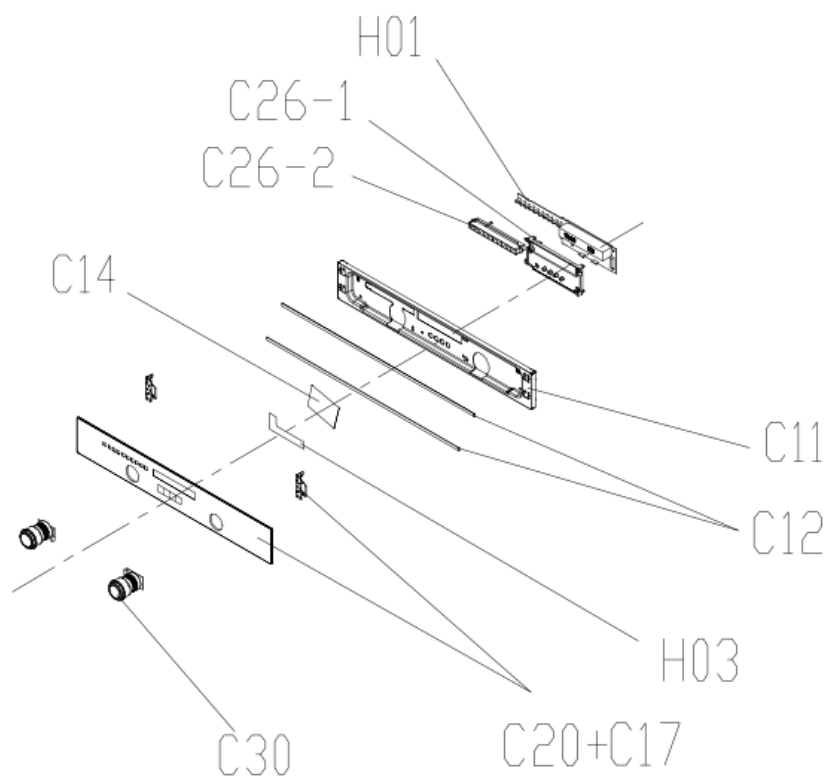
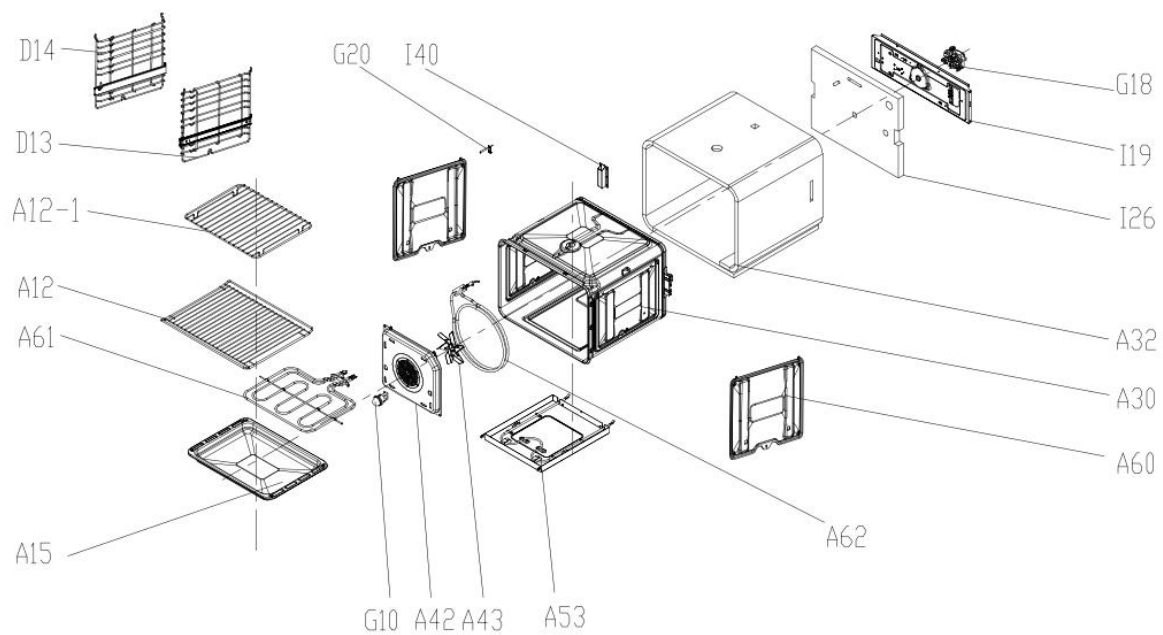
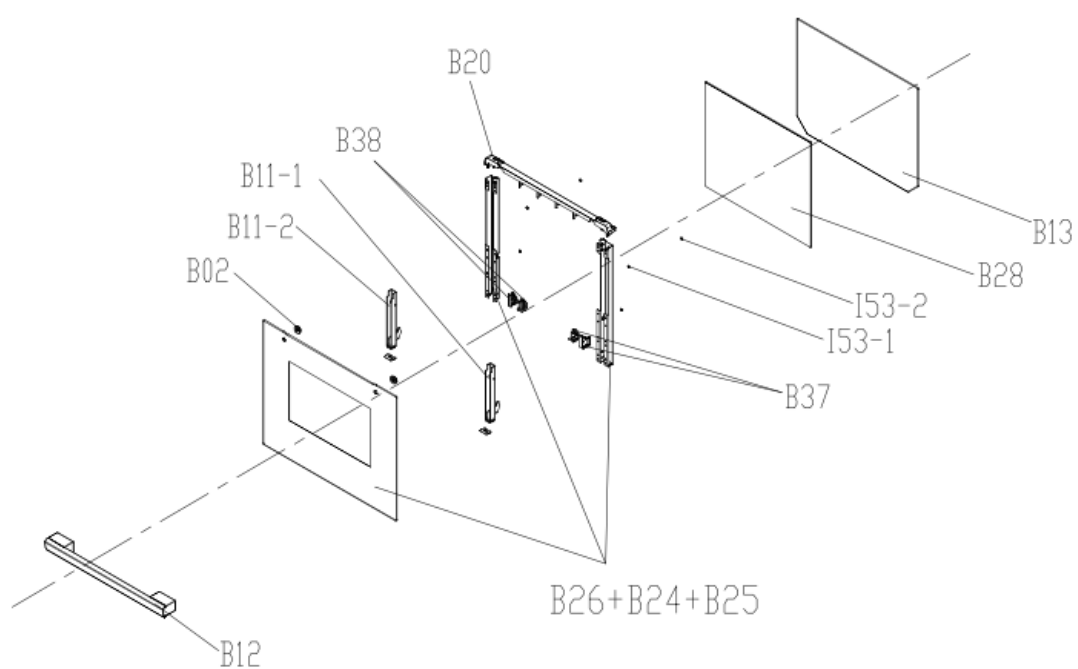
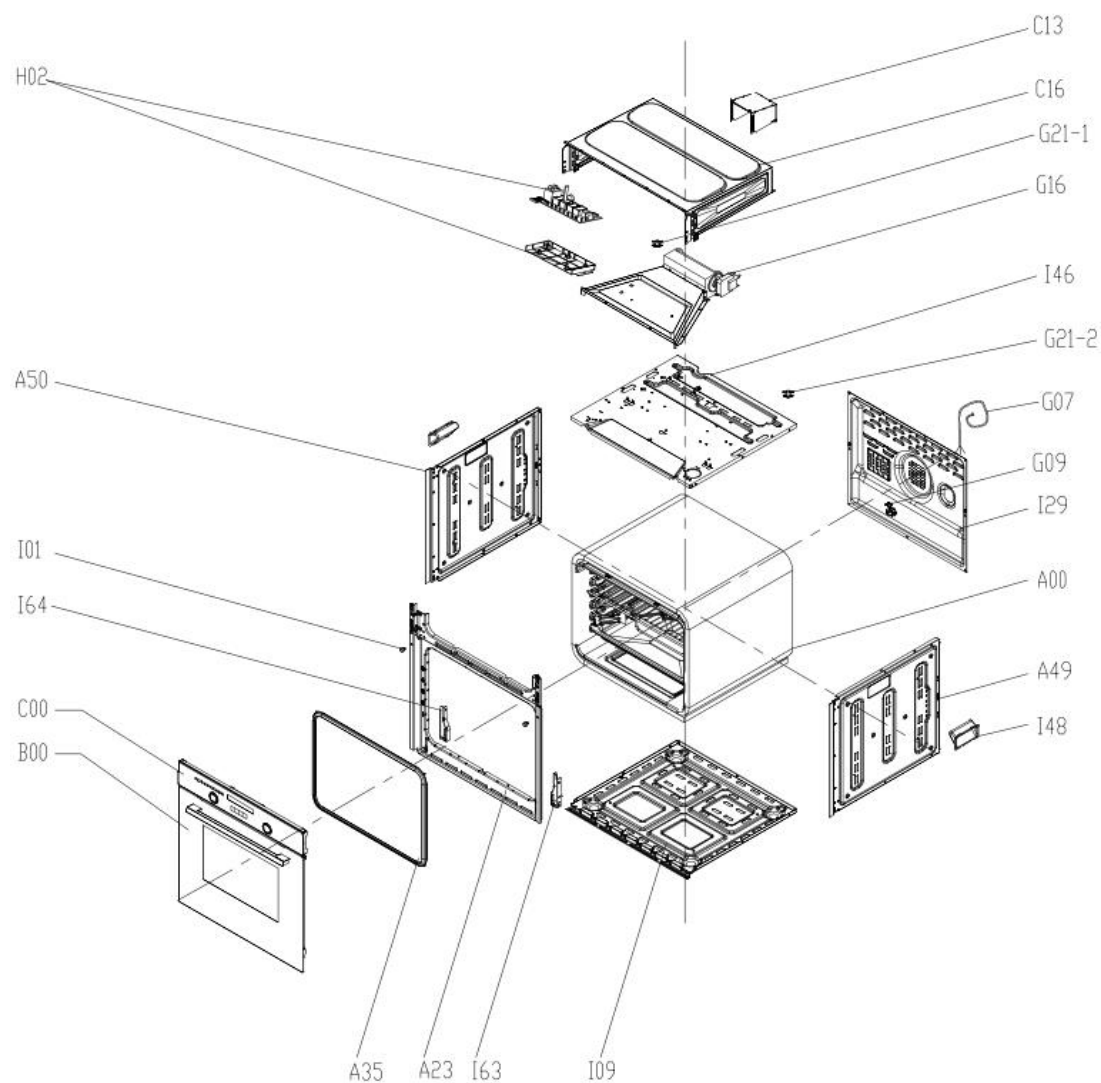


Multifunction Oven
Model Number
CLMFMI
Parts Manual



Oven install screw set part number 291599900023



| ID No. | Part Description | Qty | Part Number |
|--------|-----------------------------|-----|----------------|
| A23 | FRONT PLATE | 1 | 12271100003765 |
| A35 | CAVITY SEALING RING | 1 | 12671100000394 |
| A49 | ENCLOSER(RIGHT) | 1 | 12271100005230 |
| A50 | ENCLOSER(LEFT) | 1 | 12271100005237 |
| C13 | CONTROL PANEL BACK COVER | 1 | 12271100005023 |
| C16 | CONTROL PANEL COVER | 1 | 12271100005021 |
| G07 | POWER CORD | 1 | 17471100000137 |
| G09 | TERMINAL BLOCK | 1 | 17471100000957 |
| G16 | COOLING FAN MOTOR | 1 | 17471100000145 |
| G21-1 | THERMOSTAT 125°C | 1 | 17471100002793 |
| G21-2 | THERMOSTAT 250°C | 1 | 17471100002796 |
| H02 | POWER BOARD | 1 | 17171100000320 |
| I01 | FASTENER ASSEMBLY | 1 | 12971100001049 |
| I09 | FOLLOWING ENCLOSER | 1 | 12271100005229 |
| I29 | BACK COVER | 1 | 12271100005233 |
| I46 | TOP COVER | 1 | 12271100005227 |
| I48 | HANDLE BOX | 2 | 12171100000295 |
| I63 | HINGE FIXED FRAME (RIGHT) | 1 | 12971100000470 |
| I64 | HINGE FIXED FRAME (LEFT) | 1 | 12971100000534 |
| A12 | BAKE RACK | 1 | 12971100000649 |
| A12-1 | BAKE TRAY RACK | 1 | 12971100014302 |
| A15 | BAKE TRAY | 1 | 12271100003072 |
| A30 | CAVITY | 1 | 12271100001613 |
| A32 | CAVITY INSULATION | 1 | 12471100000049 |
| A42 | CONVECTION MOTOR COVER | 1 | 12271100004265 |
| A43 | CONVECTION FAN BLADE | 1 | 12971100001067 |
| A53 | UNDER HEATING ELEMENT COVER | 1 | 17471100001480 |
| A60 | AUTOMATIC CLEAN FENDER | 2 | 12971100009761 |
| A61 | METAL HEATING ELEMENT*(TOP) | 1 | 17471100000574 |
| A62 | TURBO HEATING ELEMENT | 1 | 17471100000261 |
| D13 | RAIL BRACKET(RIGHT) | 1 | 12971100002583 |
| D14 | RAIL BRACKET(LEFT) | 1 | 12971100002588 |
| G10 | LAMP | 1 | 17471100002113 |
| G18 | CONVECTION MOTOR | 1 | 17471100000166 |
| G20 | TEMPERATURE SENSOR | 1 | 17171100000027 |
| I19 | INSULATION COVER | 1 | 12271100005013 |
| I26 | BACK INSULATION | 1 | 12471100000008 |
| I40 | EXHAUST PIPE | 1 | 12971100002664 |
| B00 | DOOR ASS'Y | 1 | CLMFMIXDR |
| B02 | HANDLE SUPPORT | 2 | 12171100000172 |
| B11-1 | DOOR HINGE ASS'Y (RIGHT) | 1 | 12971100006342 |
| B11-2 | DOOR HINGE ASS'Y (LEFT) | 1 | 12971100006621 |
| B12 | DOOR HANDLE | 1 | 12971100002616 |

| | | | |
|-------|-----------------------------|---|----------------|
| B13 | DOOR INNER GLASS | 1 | 12571100001470 |
| B20 | DOOR FRAME UP COVER | 1 | 12171100001196 |
| B24 | DOOR FRAME BRACKET(RIGHT) | 1 | 12971100004105 |
| B25 | DOOR FRAME BRACKET(LEFT) | 1 | 12971100004107 |
| B26 | DOOR OUTER GLASS | 1 | 12571100A11259 |
| B28 | DOOR MIDDLE GLASS | 1 | 12571100000360 |
| B37 | DOOR ROTARY BRACKET (RIGHT) | 1 | 12171100001415 |
| B38 | DOOR ROTARY BRACKET (LEFT) | 1 | 12171100001414 |
| I53-1 | RUBBER GASKET A | 4 | 12671100000096 |
| I53-2 | RUBBER GASKET B | 2 | 12671100000274 |
| C00 | CONTROL PANEL ASS'Y | 1 | CLMFMIXCP |
| C11 | CONTROL PANEL HOLDER | 1 | 12271100003787 |
| C12 | CONTROL PANEL SPONGE | 2 | 12471100000054 |
| C14 | FILM OF CONTROL PANEL | 1 | 12171100001574 |
| C17 | CONTROL PANEL BRACKET | 2 | 12971100004148 |
| C20 | CONTROL PANEL GLASS | 1 | 12571100A10977 |
| C26-1 | DISPLAY BRACKET (LEFT) | 1 | 12171100001214 |
| C26-2 | DISPLAY BRACKET (RIGHT) | 1 | 12171100000886 |
| C30 | KNOB ASSEMBLY | 2 | 12171100001039 |
| H01 | DISPLAY BOARD | 1 | 17171100000743 |
| H03 | KEY-PRESS BOARD | 1 | 17171100000760 |