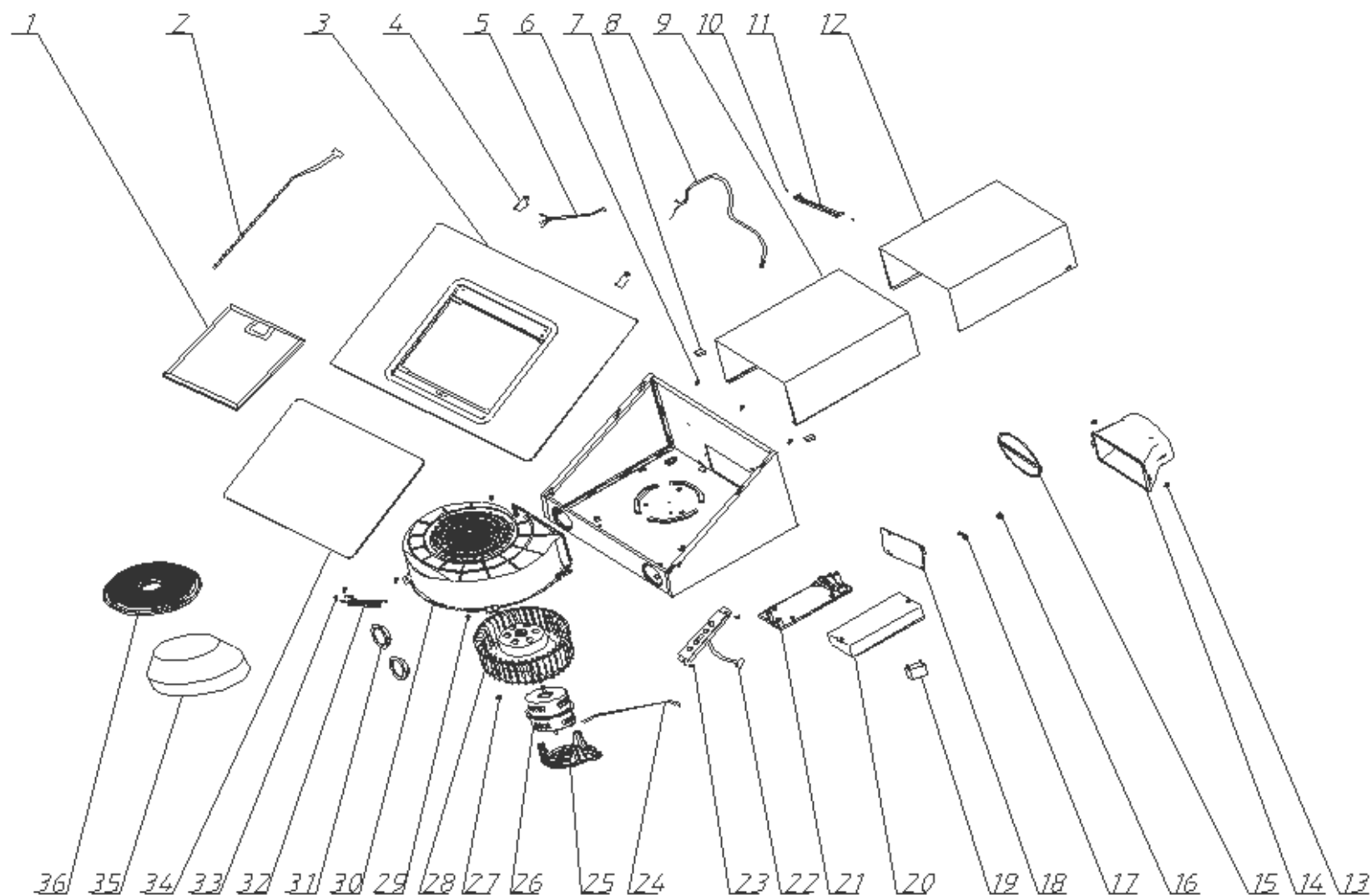


Angled Glass Cooker Hood

Model Number UBHHH90BK

Parts Manual

Exploded Drawing



02			
01			
00			
Index	Modify description	Modified by	Date

Parts List

S/N	Ref.	Description	QTY	REMARK
36	7002080200	UBHHH90BK: CHARCOAL FILTER	1	Optional
35	7121105350	UBHHH90BK: OUTLET TUBE REDUCER 150 TO 120MM	1	
34	7005017500	UBHHH90BK: GLASS - SMALL	1	
33	9111351201	UBHHH90BK: SCREW 3.5*12	2	
32	7112105011	UBHHH90BK: WIRE GROOVE	1	
31	7135050120	UBHHH90BK: LED LAMP	2	
30	7121105010	UBHHH90BK: MOTOR HOUSING	1	
29	502010125	UBHHH90BK: SCREW M4*8	3	
28	7005020200	UBHHH90BK: CV BLADE WHEEL	1	
27	9131050001	UBHHH90BK: NUT M5	1	
26	7131050001	UBHHH90BK: MOTOR	1	
25	7121105030	UBHHH90BK: MOTOR HOLDER	1	
24	7030300025	UBHHH90BK: WIRE 450 - SWITCH	1	Use from 18W34
	7137135001	WIRE 500 - SWITCH	1	Use to 18W33
23	502010125	UBHHH90BK SCREW M4*8	3	
22	7030300037	UBHHH90BK: CONTROL PCB	1	Use from 18W34
	7134050140	CONTROL PCB	1	Use to 18W33
21	7121105040	UBHHH90BK: POWER SUPPLY BOX	1	
20	7121105050	UBHHH90BK: COVER - POWER SUPPLY BOX	1	
19	7132030010	UBHHH90BK: CAPACITANCE	1	
18	7134050003	UBHHH90BK: POWER PCB	1	Use from 18W34
	7134050150	POWER PCB	1	Use to 18W33
17	7121104100	UBHHH90BK: WIRE GROOVE 3	1	
16	7121104130	UBHHH90BK: PROTECTION WIRE COVER	1	
15	7121103030	UBHHH90BK: RETURN VALVE	2	
14	7121105100	UBHHH90BK: OUTLET CONNECTOR	1	
13	9111351201	UBHHH90BK: SCREW 3.5*12	2	
12	7110105443	UBHHH90BK: CHIMNEY - INNER	1	
11	7112106081	UBHHH90BK: BRACKET - CHIMNEY	1	
10	9113400801	UBHHH90BK: SCREW ST4*8	2	
9	7110105433	UBHHH90BK: CHIMNEY - OUTER	1	

8	7136001709	UBHHH90BK: POWER CORD	1	
7	7121105320	UBHHH90BK: FIXING CLAMP - CHIMNEY	2	
6	9113400801	UBHHH90BK: SCREW ST4*8	3	
5	7137100044	UBHHH90BK: WIRING - LAMP	1	
4	7117105131	UBHHH90BK: HINGE	2	
3	7010100197	UBHHH90BK: GLASS - LARGE	1	Use from 18W34
	7151050008	GLASS - LARGE	1	Use to 18W33
2	7135050002	UBHHH90BK: LED STRIP LIGHTS	1	
1	7005060200	UBHHH90BK: ALUMINIUM FILTER	1	