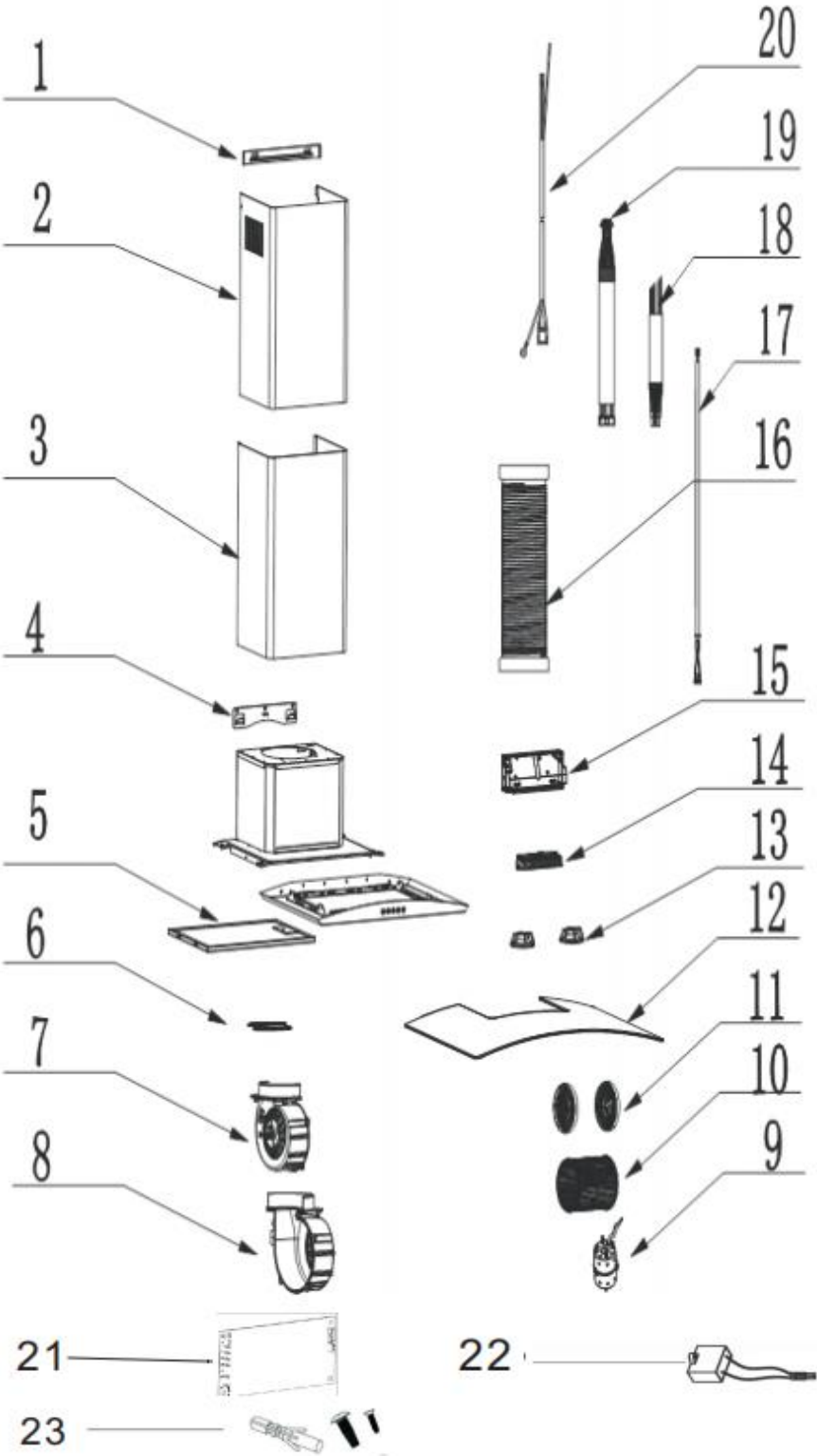


Curved Glass Cooker Hood

Model Number CG70SSPF

Parts Manual

Exploded Drawing



Parts List

| S/N | Ref. | Description | QTY | REMARK |
|-----|------------------|---------------------------|-----|---|
| 1 | B23-TG35-008-PX | TD INNER CHIMNEY BRACKET | 1 | |
| 2 | B20-TG35-006-PX | TG35 INNER CHIMNEY | 1 | |
| 3 | B20-TG35-007-PX | TG35 OUTER CHIMNEY | 1 | |
| 4 | B23-TG18-027-PX | BRACKET | 1 | |
| 5 | B35-TG01-036-XX | 5 LAYERS ALUMINIUM FILTER | 1 | |
| 6 | B30-TG18-015-JB | Φ150 VALVE | 2 | |
| 7 | B30-TD02-026-JB | HOUSING S -LEFT PART | 1 | |
| 8 | B30-TD02-027-JB | HOUSING S -RIGHT PART | 1 | |
| 9 | B61-TY02-004-XX | HOUSING S MOTOR | 1 | |
| 10 | B30-TD02-016-JB | FAN | 1 | |
| 11 | B15-TD02-024-JB | CHARCOAL FILTER | 2 | optional |
| 12 | B33-TG35-016-XB | 700MM GLASS | 1 | |
| 13 | B62-TY01-016-XX | LED LAMP -L07 | 2 | Old |
| | B62-TY01-031-XX | LED LAMP -L11 | 2 | New from order 2018/04/0000516 18W28 |
| 14 | B60-TY05-005-XX | PUSH BUTTON -M02 | 1 | |
| 15 | B30-TD08-021-JB | ELECTRIC CONTROL BOX | 1 | |
| | B30-TD08-020-JB | | 1 | |
| 16 | B36-TT03-018-XG | Φ150 SMOKE TUBE | 1 | optional |
| 17 | B67-TY03-070-XX | LED LIGHT WIRE | 1 | |
| 18 | B67-TY03-055-XX | SWITCH WIRE -A | 1 | |
| 19 | B67-TY03-046-XX | SWITCH WIRE -B | 1 | |
| 20 | B67-TY04-005-XB | WIRE ONLY, WITHOUT PLUG | 1 | |
| 21 | B63-TY12-281-XX | PCB | 1 | Old |
| | B63-TY12-281-XX3 | PCB | | New from order 2018/04/0000098 18W20 |
| 22 | B64-TY08-249-XX1 | CAPACITOR | 1 | |
| 23 | C08-1000-001-BX | SCREW BAG | 1 | |