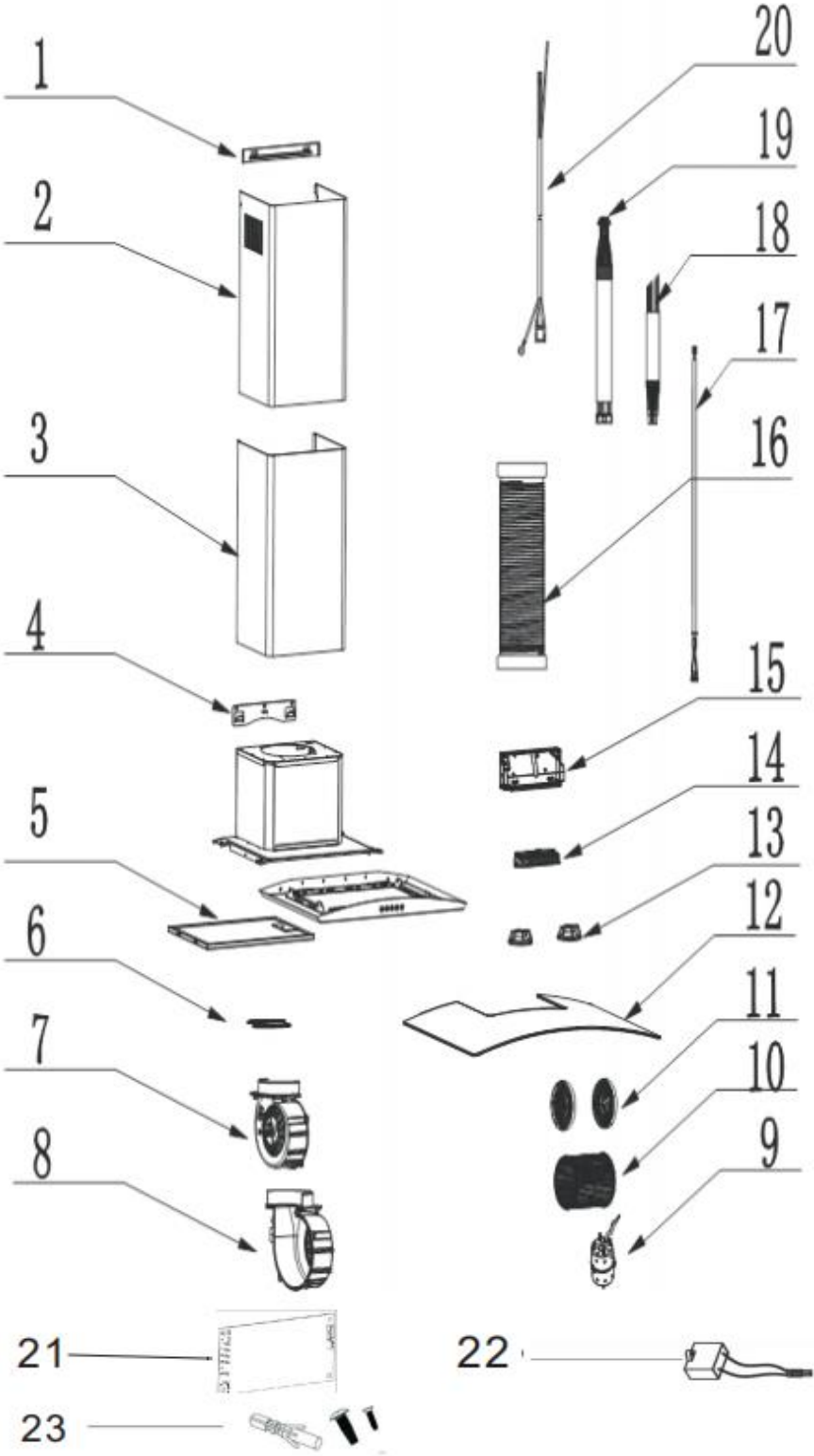


Curved Glass Cooker Hood

Model Number CG90BKPF

Parts Manual

Exploded Drawing



Parts List

S/N	Ref.	Description	QTY	REMARK
1	B23-TG35-008-PX	TD INNER CHIMNEY BRACKET	1	
2	B21-TG35-006-TB2	TG35 INNER CHIMNEY-BLACK	1	
3	B21-TG35-007-TB2	TG35 OUTER CHIMNEY-BLACK	1	
4	B23-TG18-027-PX	BRACKET	1	
5	B35-TG01-036-XX	5 LAYERS ALUMINIUM FILTER	1	
6	B30-TG18-015-JB	Φ150 VALVE	2	
7	B30-TD02-026-JB	HOUSING S -LEFT PART	1	
8	B30-TD02-027-JB	HOUSING S -RIGHT PART	1	
9	B61-TY02-004-XX	HOUSING S MOTOR	1	
10	B30-TD02-016-JB	FAN	1	
11	B15-TD02-024-JB	CHARCOAL FILTER	2	optional
12	B33-TG35-015-XB	900MM GLASS-FULL BLACK	1	
13	B62-TY01-016-XX	LED LAMP -L07	2	Old
	B62-TY01-031-XX	LED LAMP -L11	2	New from order 2018/04/0000516 18W28
14	B60-TY05-005-XX	PUSH BUTTON -M02	1	
15	B30-TD08-021-JB	ELECTRIC CONTROL BOX	1	
	B30-TD08-020-JB		1	
16	B36-TT03-018-XG	Φ150 SMOKE TUBE	1	optional
17	B67-TY03-070-XX	LED LIGHT WIRE	1	
18	B67-TY03-055-XX	SWITCH WIRE -A	1	
19	B67-TY03-046-XX	SWITCH WIRE -B	1	
20	B67-TY04-005-XB	WIRE ONLY, WITHOUT PLUG	1	
21	B63-TY12-281-XX	PCB	1	Old
	B63-TY12-281-XX3	PCB		New from order 2018/04/0000098 18W20
22	B64-TY08-249-XX1	CAPACITOR	1	
23	C08-1000-001-BX	SCREW BAG	1	