



Oven:UBVFFA060SS

Product reference code:UBVFFA060SS

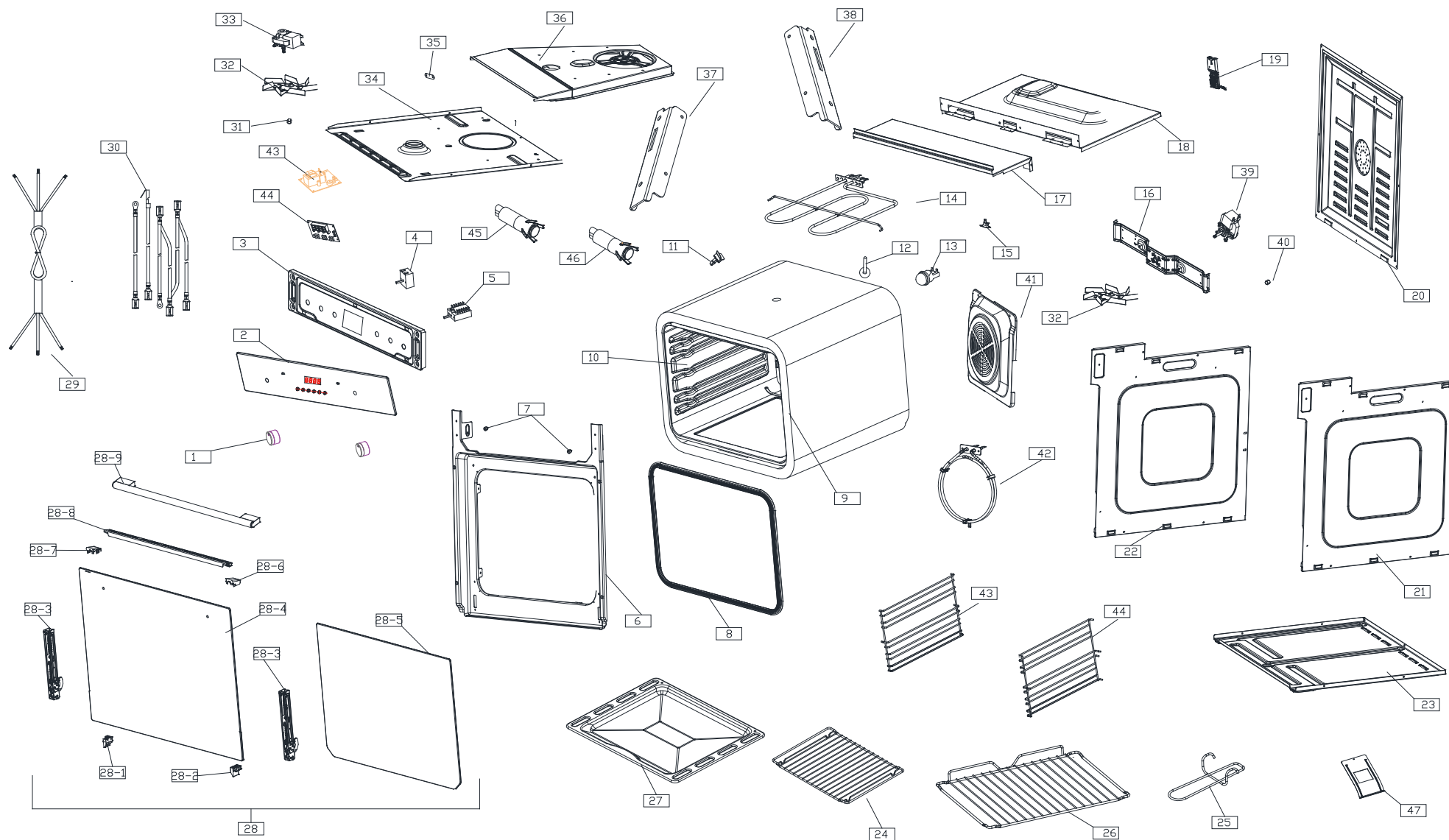
Modified by:Eason

Modification:

00_2017.08.18 New document

01_2018.05.22 Update No.6/10/12/28.1/28.2/28.3/28.6/28.7 part and add new part code

UBVFFA060SS Exploded drawing



UBVFFA060SS parts list

No.	part code	Aoms drawing No	part name	chinese name	Qty	Remark
1	502530003	BF-6A22E3E3-01-02-03	knob	旋钮18	2	
2	300002673	BA-6A22D1E6-1-02	Panel glass components	面板玻璃组件	1	
3	305040222	BD-203AE-1-01-02-T1	Panel fixing plate	烤箱座1-C3-1	1	
4	501000851	BB-228AEG-04-09-T1	thermostat switch	体胀式温控器-2	1	
5	501000183	BF-203A-1-02-01	Function switch	多位开关203A	1	
6	305040190	BA-318AE-KZ-01-T2	Door frame	烤箱座2-E	1	May 2018 stop using
	305040416	BA-318AE-KZ-01-T3		烤箱座2-H		May 2018 began to use
7	503150082	BB-228AEG-16-T1	Limit glue	限位胶2	2	
8	300002927	BA-298BE-1-12-00-T2	door seal	门密封条组件4A	1	
9	506340016	BA-205A-1-CBM-01	Cotton insulation	长保温棉3	1	
10	300002056	BD-318AE-3-01-05-00-T2	Cavity assembly	内胆组件A2-B	1	Aug. 2017 stop using
	300002703	BF-6A31E9E1-1-NDZJ-01		内胆组件A2-B1		use from Aug.2017 to May 2018
	300003112	BF-6A31E9E1-1-NDZJ-01-T1		内胆组件A2-B2		May 2018 began to use
11	505090013	BB-228AEG-01-18	Buckle	感温头卡块	1	
12	305100004	BB-228AEG-01-19	Thermal tube	导热筒-A	1	May 2018 stop using
	305100008	BH-5A20C4M-DRT-A2-01		导热筒A2		May 2018 began to use
13	501000575	BG-224AG-5-12	The lamp assembly	高温灯组件1	1	
14	501000884	BB-6B20D1-1-03	Top heating element assembly	顶发热管组件16	1	
15	501000980	BG-7B22A1-T-00	Temperature protection	突跳式温控器7	1	
16	305060131	BF-296A-5-02-01	Motor bracket	电机支架5-A	1	Aug. 2017 stop using
	305060192	BF-296A-5-ZJ-01		电机支架5-B		Aug. 2017began to use
17	305060023	BF-296D-1-06	top plate	顶板2-A	1	
18	305060177	BF-296A-5-01-06-02-T1	top plate	顶板1-B2	1	
19	300001228	BF-296A-5-01-06-01	Connection box assembly	小接线盒组件	1	
20	305060133	BG-224AG-5-20	Rear plate	后板A-1	1	
21	305060170	BG-224AG-5-23-T2	The left side plate	左侧板-B5	1	
22	305060171	BG-224AG-5-24-T2	The right side plate	右侧板-B5	1	
23	305060174	BG-224AG-5-19-T1	bottom plate	底板2-A1	1	
24	502010046	BF-220AE-1-FJ-02	shelf for tray	层架5	1	
25	502010073	BF-296D-FJ-04	handle for tray	手柄	1	
26	502010160	BF-220AE-1-FJ-01-T1	shelf	层架4B	1	
27	305040004	BB-228AEG-FJ-03	tray	浅托盘	1	
28	300002672	BA-6A22D1E6-1-01	Complete door assembly	门部件	1	
28.1	503140011	BB-228AEG-02-05-T1	Hinge mounting block-left	左下固定块1	1	May 2018 stop using
	503130026	BB-228AEG-00-05-A		左下固定块2		May 2018 began to use
28.2	503140012	BB-228AEG-02-06-T1	Hinge mounting block-right	右下固定块1	1	May 2018 stop using
	503130027	BB-228AEG-00-06-A		右下固定块2		May 2018 began to use
28.3	502000043	BA-298BE-1-01-08-T1	Hinge	铰链组件7-1	2	May 2018 stop using
	502000067	BA-298BE-1-01-08-T3		铰链组件7-2		May 2018 began to use
28.4	300002674	BA-6A22D1E6-1-01-01	outer glass	外层玻璃组件	1	
28.5	306360456	BB-228AEG-BS-05-T4	inner glass	内层玻璃图案4	1	
28.6	503130001	BB-228AEG-02-03	Left fixed block	左上固定块	1	May 2018 stop using
	503130028	BB-228AEG-02-03-A		左上固定块2		May 2018 began to use
28.7	503130002	BB-228AEG-02-04	right fixed block	右上固定块	1	May 2018 stop using
	503130029	BB-228AEG-02-04-A		右上固定块2		May 2018 began to use
28.8	305040013	BB-228AEG-02-10	Door ventilation blocks	门通风栅格	1	
28.9	502100050	BI-6A31E7E3W-01-01-02	door handle	门拉手19-2	1	
29	501001116	BG-7B22B1-1-DYX-01	power cable	CAT电源线	1	
30	501000565	BG-224AG-5-14-01	Internal wiring	1套配线	1	
31	502010148		nut M6	M6右旋标准法兰螺母	1	
32	305060090	BA-319ATB-1-03-01	Fan blades	扇叶-A	2	
33	501000939	BB-228AEG-04-04-T1	Cooling motor assembly	冷却电机组件1A	1	
34	305060163	BA-319ATB-1-02-02-T1	Insulation board	隔热板3-1	1	
35	505070001	BB-228AEG-18	Thermostat ground blade	温控器接地片	1	
36	305060176	BB-228AEG-03-06-T1	The wind deflector	导风板5-1	1	
37	505060059	BG-224AG-5-11-00-T1	Left door link member	左门连杆-4	1	
38	505060060	BG-224AG-5-12-00-T1	right door link member	右门连杆-4	1	
39	501000940	BD-296A-3-05-T1	Convection motor assembly	对流电机组件6A	1	
40	502010147		nut M6	M6左旋标准法兰螺母	1	
41	305040288	BA-6A31E7E2-1-FZ-01-T2	Fan cover	风扇罩-B4	1	
42	501000726	BF-6B29E2-01-02	rear heating element	环形加热组件7	1	Aug. 2017 stop using
	501001585	BF-6A31E7E1-1-HXG-02		环形发热管7-1		Aug. 2017began to use
43	501000987	BI-6A29G1E6-1-DY-01	Power supply board assembly	电源板组件	1	
44	501001132	BF-6B29E7E6-1-CM-01	Display panel assembly	显示板组件1（6触摸）	1	
45	501000075	BF-296D-1-05-01	Indicator light	配线30	1	
46	501000076	BH-224B-1-04-01	Indicator light	配线31	1	
47	505060040	BG-224AG-5-15	Back baffle	背挡板	1	
48	502010165	BH-7B22A1M-1TP-01	Left Lateral grids	左托盘架A-5	1	
49	502010166	BH-7B22A1M-1TP-02	right Lateral grids	右托盘架A-5	1	

UBVFFA060SS Wiring diagram

Model:BA-6A22D1E6

Rated Voltage 220-240~

Frequency 50Hz

Power Input 2200W

