

## Oven:UBVFA060SS

Product reference code:UBVFA060SS

Modified by:Eason

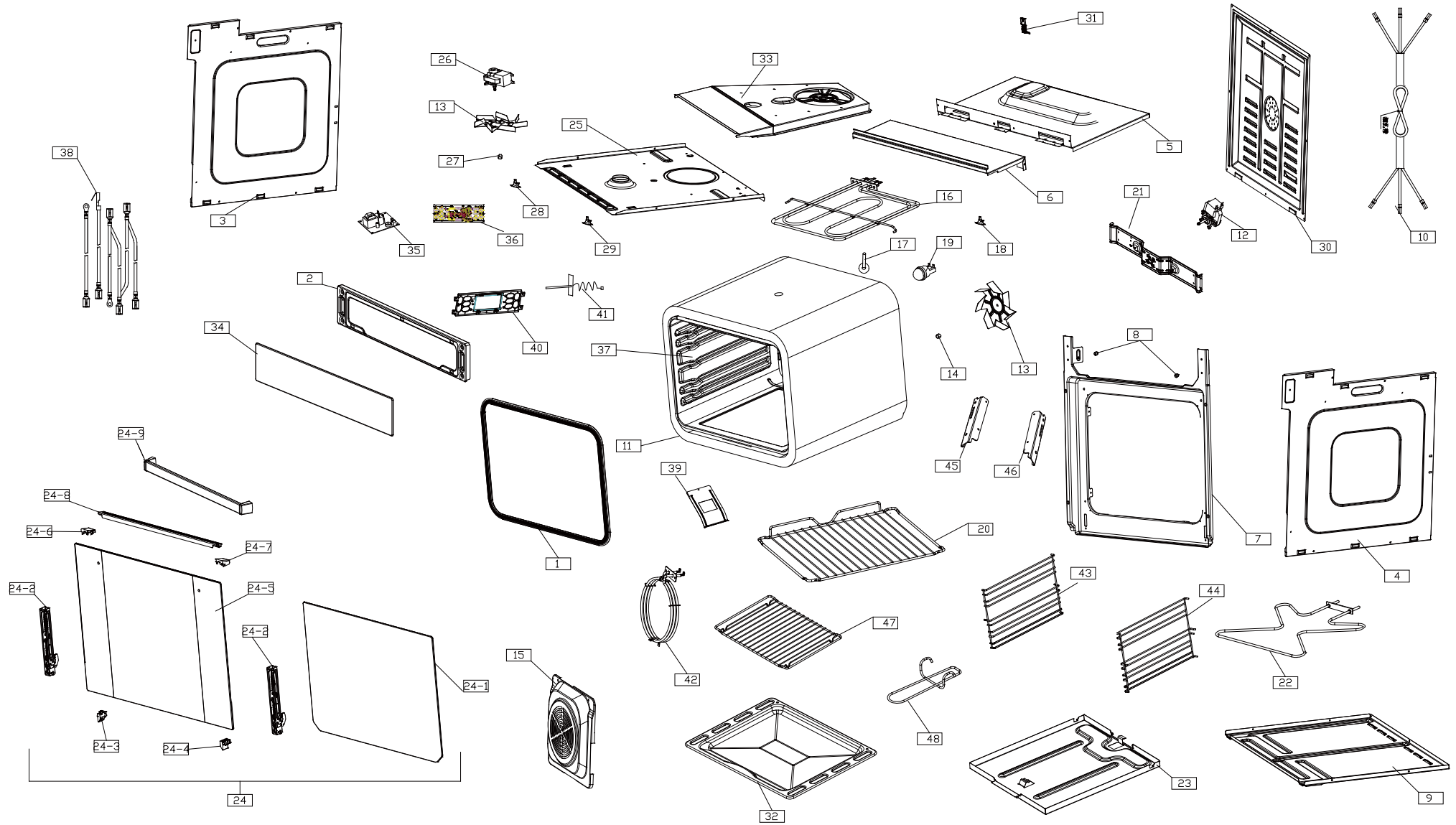
Modification:

00\_2017.03.29 New document

01\_2017.10.19 Change No.1,8,12,21,26,37,42,43,44 part number

02\_2018.05.22 Update No.7/17/24.2/24.3/24.4 /24.6/24.7/37part and add new part code.

# UBVFA060SS Exploded drawing



# UBVFA060SS parts list

No.	part code	Aoms Part Reference	part name	名称	Q'ty	Remark
1	300002927	BA-298BE-1-12-00-T2	door seal assy	门密封条组件4A	1	
2	305040271	BF-6A31J1T4-1-05-00	Oven seat	烤箱座1-Z	1	
3	305060170	BG-224AG-5-23-T2	The left side plate	左侧板-B5	1	
4	305060171	BG-224AG-5-24-T2	The right side plate	右侧板-B5	1	
5	305060177	BF-296A-5-01-06-02-T1	top plate	顶板1-B2	1	
6	305060023	BF-296D-1-06	top plate	顶板2-A	1	
7	305040190	BA-318AE-KZ-01-T2	door frame	烤箱座2-E	1	May 2018 stop using
	305040416	BA-318AE-KZ-01-T3		烤箱座2-H		May 2018 began to use
8	503150082	BB-228AEG-16-T1	Limit glue	限位胶2	2	
9	305060174	BG-224AG-5-19-T1	bottom plate	底板2-A1	1	
10	501001116	BG-7B22B1-1-DYX-01	power cable	CAT电源线	1	
11	506340016	BA-205A-1-CBM-01	Cotton insulation	长保温棉3	1	
12	501001156	BF-6A31E7E1-1-DL-01	Convection motor assembly	对流电机组件6B	1	
13	305060090	BA-319ATB-1-03-01	Fan blades	扇叶-A	2	
14	502010147		nut M6	M6左旋标准法兰螺母	1	
15	305040270	BA-6A31E7E2-1-FZ-01-T1	Fan cover	风扇罩-B3	1	
16	501000723	BF-6B29C4-01-02	Top heating element assembly	顶发热管组件13	1	
17	305100004	BB-228AEG-01-19	Thermal tube	导热筒-A	1	May 2018 stop using
	305100008	BH-5A20C4M-DRT-A2-01		导热筒A2		May 2018 began to use
18	501000980	BG-7B22A1-T-00	Temperature protection	突跳式温控器7	1	
19	501000575	BG-224AG-5-12	The lamp assembly	高温灯组件1	1	
20	502010160	BF-220AE-1-FJ-01-T1	shelf for tray	层架4B	1	
21	305060192	BF-296A-5-ZJ-01	Motor bracket	电机支架5-B	1	
22	501000725	BF-6B29C4-01-03-01	bottom heating element	底发热管5	1	
23	305040097	BB-228AEG-01-03-06	Bottom heating seat	底加热座1	1	
24	300002676	BF-6A29J2T4-1-01	door assembly	门部件	1	
24.1	306360004	BB-228AEG-BS-05	inner glass	内层玻璃图案	1	
24.2	502000043	BA-298BE-1-01-08-T1	Hinge assembly	铰链组件7-1	2	May 2018 stop using
	502000067	BA-298BE-1-01-08-T3		铰链组件7-2		May 2018 began to use
24.3	503140011	BB-228AEG-02-05-T1	Left fixed block	左下固定块1	1	May 2018 stop using
	503130026	BB-228AEG-00-05-A		左下固定块2		May 2018 began to use
24.4	503140012	BB-228AEG-02-06-T1	right fixed block	右下固定块1	1	May 2018 stop using
	503130027	BB-228AEG-00-06-A		右下固定块2		May 2018 began to use
24.5	300002678	BF-6A29J2T4-1-01-01	Outer glass assembly	外层玻璃组件	1	
24.6	503130001	BB-228AEG-02-03	Left fixed block	左上固定块	1	May 2018 stop using
	503130028	BB-228AEG-02-03-A		左上固定块2		May 2018 began to use
24.7	503130002	BB-228AEG-02-04	right fixed block	右上固定块	1	May 2018 stop using
	503130029	BB-228AEG-02-04-A		右上固定块2		May 2018 began to use
24.8	305040013	BB-228AEG-02-10	Door ventilation blocks	门通风栅格	1	
24.9	505030005	BF-6A22E3E3-01-01-02	door handle	门拉手3-1	1	
25	305060163	BA-319ATB-1-02-02-T1	Insulation board	隔热板3-1	1	
26	501001138	BF-6A31E7E1-1-LQ-01	Cooling motor assembly	冷却电机组件1B	1	
27	502010148		nut M6	M6右旋标准法兰螺母	1	
28	501000517	BH-319ATB-1-05	Temperature protection	突跳式温控器5	1	
29	501000518	BH-319ATB-1-06	Temperature protection	突跳式温控器6	1	
30	305060133	BG-224AG-5-20	Rear plate	后板A-1	1	
31	300001228	BF-296A-5-01-06-01	Connection box assembly	小接线盒组件	1	
32	305040004	BB-228AEG-FJ-03	tray	浅托盘	1	
33	305060176	BB-228AEG-03-06-T1	The wind deflector	导风板5-1	1	
34	300002677	BF-6A29J2T4-1-02	Panel assembly	面板玻璃组件	1	
35	501001164	BF-6A29J2T4-1-DY-01	Power supply board assembly	T4电源板组件1	1	
36	501001165	BF-6A29J2T4-1-XS-01	Display panel assembly	T4显示板组件1	1	
37	300002703	BF-6A31E9E1-1-NDZJ-01	Cavity assembly	内胆组件A2-B1	1	May 2018 stop using
	300003112	BF-6A31E9E1-1-NDZJ-01-T1		内胆组件A2-B2		May 2018 began to use
38	501000515	BH-319ATB-1-03-09	wiring	内部连线	1set	
39	505060040	BG-224AG-5-15	Back baffle	背挡板	1	
40	501001101	BF-6A31J1T4-1-06-00	Display seat	T4显示座	1	
41	501000356	BA-319ATB-S	sensor	传感器-ATB	1	
42	501001070	BF-6A31E7E1-1-HXG-01	rear heating element	环形发热管5-1	1	
43	502010165	BH-7B22A1M-1TP-01	Left Lateral grids	左托盘架A-5	1	
44	502010166	BH-7B22A1M-1TP-02	right Lateral grids	右托盘架A-5	1	
45	505060059	BG-224AG-5-11-00-T1	Left door link member	左门连杆-4	1	
46	505060060	BG-224AG-5-12-00-T1	right door link member	右门连杆-4	1	
47	502010046	BF-220AE-1-FJ-02	shelf	层架5	1	
48	502010073	BF-296D-FJ-04	handle for tray	手柄	1	

# UBVFA060SS Wiring diagram

