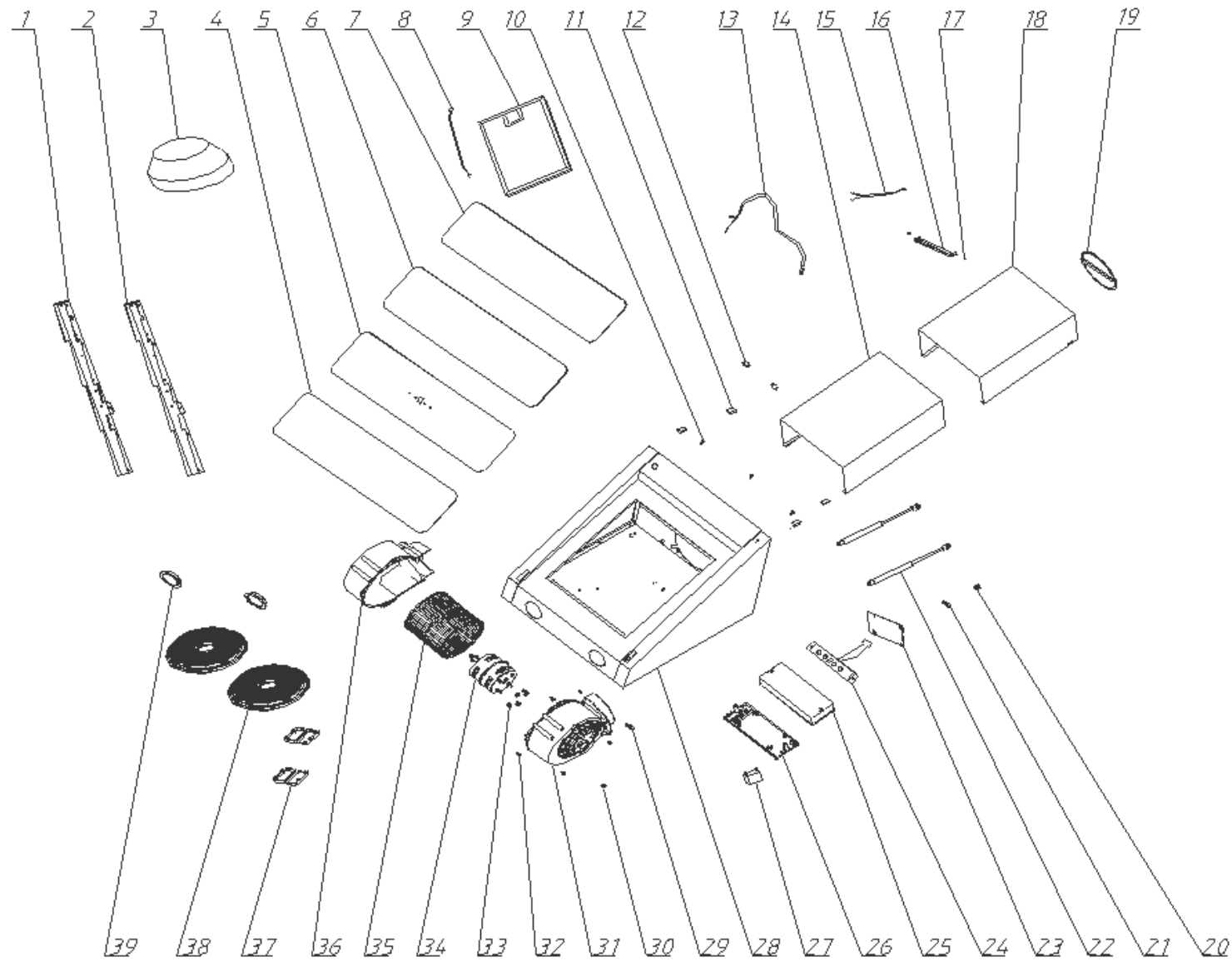


Angled Glass Cooker Hood

Model Number UBDCH90BK

Parts Manual

Exploded Drawing



Parts List

S/N	Ref.	Description	QTY	REMARK
39	7135050040	UBDCH90BK: LED LAMP	2	
38	7003080100	UBDCH90BK: CHARCOAL FILTER	2	Optional
37	7121105230	UBDCH90BK: PROTECTION WIRE COVER	2	
36	7121103020	UBDCH90BK: MOTOR HOUSING - LEFT	1	
35	7121503070	UBDCH90BK: CV BLADE WHEEL	1	
34	7131080020	UBDCH90BK: MOTOR	1	
33	9131050002	UBDCH90BK: NUT M5	4	
32	9111351201	UBDCH90BK: SCREW 3.5*12	7	
31	7121103010	UBDCH90BK: MOTOR HOUSING - RIGHT	1	
30	9132050002	UBDCH90BK: NUT M5	1	
29	7121503080	UBDCH90BK: WIRE GROOVE 2	1	
28	7005018100	UBDCH90BK: BODY COMPONENTS	1	
27	7132030030	UBDCH90BK: CAPACITANCE	1	
26	7121105040	UBDCH90BK: POWER SUPPLY BOX	1	
25	7121105050	UBDCH90BK: COVER - POWER SUPPLY BOX	1	
24	7134050120	UBDCH90BK: CONTROL PCB	1	Use to 18W22
	7030300037	CONTROL PCB	1	Use from 18W35
23	7134050130	UBDCH90BK: POWER PCB	1	Use to 18W22
	7134050003	POWER PCB	1	Use from 18W35
22	7211405050	UBDCH90BK: AIR SPRING SUPPORTS	2	
21	7121104100	UBDCH90BK: WIRE GROOVE 3	1	
20	7121104130	UBDCH90BK: PROTECTION WIRE COVER	1	
19	7121103030	UBDCH90BK: RETURN VALVE	2	
18	7110105443	UBDCH90BK: CHIMNEY - INNER	1	
17	9113400801	UBDCH90BK: SCREW ST4*8	3	
16	7112106081	UBDCH90BK: BRACKET - CHIMNEY	1	
15	7137100031	UBDCH90BK: WIRING - LAMP	1	
14	7110105433	UBDCH90BK: CHIMNEY - OUTER	1	
13	7136001707	UBDCH90BK: POWER CORD	1	
12	7118105011	UBDCH90BK: HINGE	2	

11	7121105320	UBDCH90BK: FIXING CLAMP - CHIMNEY	4	
10	9113400801	UBDCH90BK: SCREW ST4*8	2	
9	7001060100	UBDCH90BK: ALUMINIUM FILTER	1	
8	7137100045	UBDCH90BK: WIRE 1400 - SWITCH	1	Use to 18W22
	7030300036	WIRE 1050 - SWITCH	1	Use from 18W35
7	7005019000	UBDCH90BK: GLASS - 3	1	
6	7005018900	UBDCH90BK: GLASS - 2	1	
5	7005018800	UBDCH90BK: GLASS - 1	1	Use to 18W22
	7010100079	GLASS - 1 (T5)	1	Use from 18W35
4	7005018900	UBDCH90BK: GLASS - 2	1	
3	7121105350	UBDCH90BK: OUTLET TUBE REDUCER 150 TO 120MM	1	
2	7110105613	UBDCH90BK: GLASS BRACKET - RIGHT	1	
1	7110105603	UBDCH90BK: GLASS BRACKET - LEFT	1	