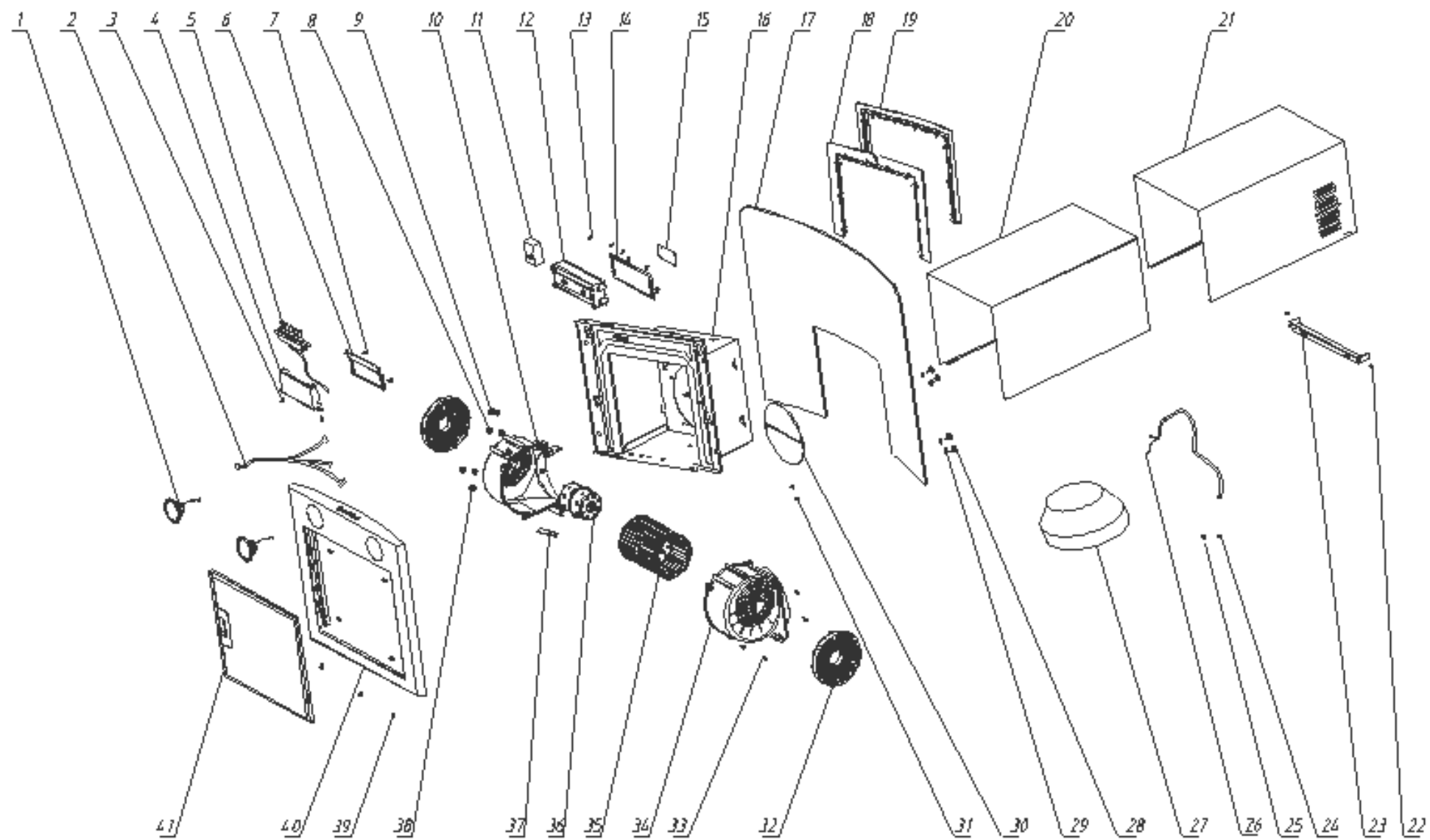


# 70cm LED Curved Glass Cooker Hood

Model Number UBLED70

Parts Manual

# Exploded Drawing



# Parts List

S/N	Ref.	Description	QTY
41	7001060100	ALUMINIUM FILTER	1
40	7006010500	FRONT PANEL ASSEMBLY	1
39	502010125	SCREW M4*8	7
38	7124107010	PROTECTION WIRE COVER	1
37	7121102030	WIRING CLIP - MOTOR	1
36	7131060001	MOTOR	1
35	7121502030	CK BLADE WHEEL	1
34	7121102010	RIGHT SHELL OF WIND CABINET	1
33	9111351201	SCREW ST3.5*12	7
32	7003080001	CHARCOAL FILTER	2
31	9111351201	SCREW ST3.5*12	5
30	7121502060	RETURN VALVE	2
29	503130005	HANDLE PAD	4
28	9112502001	GLAZING SPRING M5	4
27	7121105350	OUTLET TUBE REDUCER 150 TO 120MM	1
26	7136001707	POWER CORD WITHOUT PLUG	1
25	502050001	OUTER SERRATE CHRYSANTHEMUM	1
24	9112400601	SCREW M4*6	1
23	7112106081	BRACKET - CHIMNEY	1
22	502010125	SCREW M4*8	2
21	7117106131	CHIMNEY - INNER	1
20	7117106121	CHIMNEY - OUTER	1
19	7121106001	TOP FRAME - COLOUR LAMP	1
18	7121106002	LOWER FRAME - COLOUR LAMP	1
17	7151060004	GLASS	1
16	7006010400	BOX ASSEMBLY	1
15	7134060001	POWER PCB - COLOUR LAMP	1
14	7121503050	COVER - POWER SUPPLY BOX	1
13	9111351201	SCREW ST3.5*12	6
12	7121503040	POWER SUPPLY BOX	1
11	7132020010	CAPACITANCE	1

10	7121102020	LEFT SHELL OF WIND CABINET	1
9	7121104100	WIRE GROOVE 3	1
8	9131040001	LOCKING NUT M4	4
7	9111350803	SCREW ST3.5*8	4
6	7121501060	COVER - CONTROL BOX	1
5	7133010002	BUTTON SWITCH	1
4	7121501050	CONTROL BOX	1
3	502010125	SCREW M4*8	2
2	7137100053	WIRING - COLOUR LAMP	1
1	7135050003	LED LAMP	2