



Oven:UBEMF610

Product reference code:UBEMF610

Modified by:Eason

Modification:

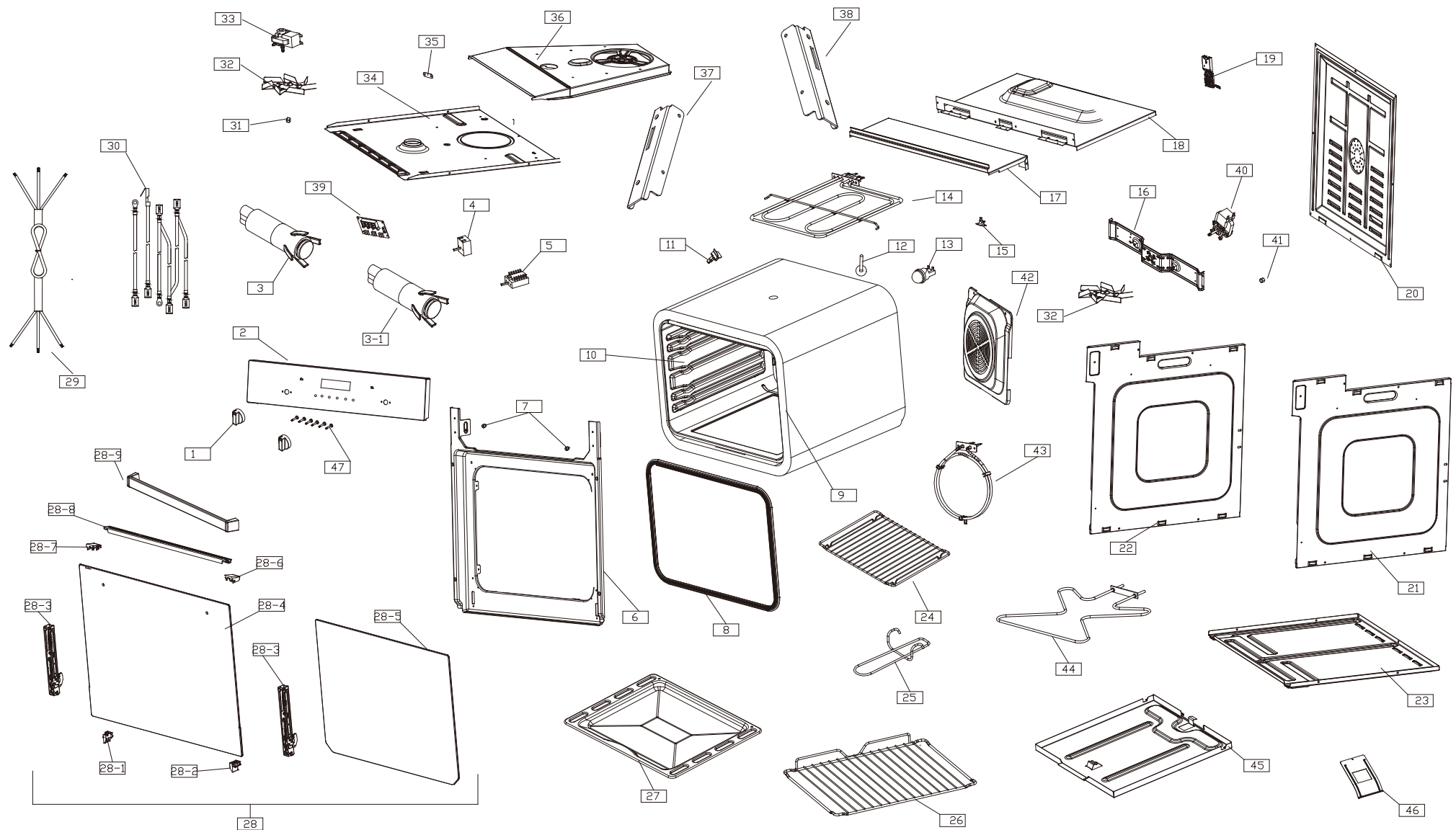
00_2016.12.27 New document

01_2017.10.26 replace part code for No.8&28.9&33&40,and change parts for No.10&12&16&43

02_2018.06.26 Change part code for No.6&10&28.1&28.2&28.3&28.6&28.7

03_2020.08.20 Change “Wiring diagram” and part No. 02/14/39/43/44/47

UBEMF610 Exploded drawing



UBEMF610 parts list

No.	part code	Aoms drawing No	part name	chinese name	Qty	remark
1	501000981	HA-55-21-00-T1	knob	旋钮2-1	2	
2	300002591	BG-6B29E7E3-1-01	Panel assembly	面板组件	1	
	300004539	BG-6B29E7E3-1-01-T1	Panel assembly	面板组件	1	Orders in 2020 start using it
3	501001005	BE-6A22E8M1-2-07	Wiring	配线55	1	
3.1	501001006	BE-6A22E8M1-2-08	Wiring	配线56	1	
4	501000851	BB-228AEG-04-09-T1	thermostat switch	体胀式温控器-2	1	
5	501000130	BA-318AE-1-02-02	Function switch	多位开关318A	1	
6	305040190	BA-318AE-KZ-01-T2	door frame	烤箱座2-E	1	old
	305040416	BA-318AE-KZ-01-T3		烤箱座2-H		new(After May 2018)
7	503150082	BB-228AEG-16-T1	Limit glue	限位胶2	2	
8	300002927	BA-298BE-1-12-00-T2	Door seal assembly	门密封条组件4A	1	replace:300002014
9	506340016	BA-205A-1-CBM-01	Cotton insulation	长保温棉3	1	
10	300002058	BF-6B29E2-01-01-T2	Cavity assembly	内胆组件D2-B1	1	Before May 2017
	300002705	BF-6B31E7M-1-NDZJ-01		内胆组件D2-B2		Between May 2017 and May 2018
	300003116	BF-6B31E7M-1-NDZJ-01-T2		内胆组件D2-B2B		After May 2018
11	505090013	BB-228AEG-01-18	Buckle	感温头卡块	1	
12	305100004	BB-228AEG-01-19	Thermal tube	导热筒-A	1	Stop using from 17W19
	305100008	BH-5A20C4M-DRT-A2-01		导热筒A2		Started to use from 17W19
13	501000575	BG-224AG-5-12	The lamp assembly	高温灯组件1	1	
14	501000723	BF-6B29C4-01-02	Top heating element assembly	顶发热管组件13	1	
	501001521	BG-6B29E7E6-2-FRG-2-T1	Top heating element assembly	顶发热管组件13-2A	1	Use from 2019
15	501000980	BG-7B22A1-T-00	Temperature protection	突跳式温控器7	1	
16	305060131	BF-296A-5-02-01	Motor bracket	电机支架5-A	1	Stop using from 17W19
	305060192	BF-296A-5-ZJ-01		电机支架5-B		Started to use from 17W19
17	305060023	BF-296D-1-06	top plate	顶板2-A	1	
18	305060177	BF-296A-5-01-06-02-T1	top plate	顶板1-B2	1	
19	300001228	BF-296A-5-01-06-01	Connection box assembly	小接线盒组件	1	
20	305060133	BG-224AG-5-20	Rear plate	后板A-1	1	
21	305060170	BG-224AG-5-23-T2	The left side plate	左侧板-B5	1	
22	305060171	BG-224AG-5-24-T2	The right side plate	右侧板-B5	1	
23	305060174	BG-224AG-5-19-T1	bottom plate	底板2-A1	1	
24	502010046	BF-220AE-1-FJ-02	shelf	层架5	1	
25	502010073	BF-296D-FJ-04	handle for tray	手柄	1	
26	502010160	BF-220AE-1-FJ-01-T1	shelf for tray	层架4B	1	
27	305040004	BB-228AEG-FJ-03	tray	浅托盘	1	
28	300002354	BG-7B22B1-1-01	door assembly	门部件	1	
28.1	503140011	BB-228AEG-02-05-T1	Left fixed block	左下固定块1	1	old
	503130026	BB-228AEG-00-05-A		左下固定块2		new(After May 2018)
28.2	503140012	BB-228AEG-02-06-T1	right fixed block	右下固定块1	1	old
	503130027	BB-228AEG-00-06-A		右下固定块2		new(After May 2018)
28.3	502000043	BA-298BE-1-01-08-T1	Hinge assembly	铰链组件7-1	2	old
	502000067	BA-298BE-1-01-08-T3		铰链组件7-2		new(After May 2018)
28.4	300002355	BG-7B22B1-1-01-00	Outer glass assembly	外层玻璃组件	1	
28.5	306360456	BB-228AEG-BS-05-T4	inner glass	内层玻璃围套4	1	
28.6	503130001	BB-228AEG-02-03	Left fixed block	左上固定块	1	old
	503130028	BB-228AEG-02-03-A		左上固定块2		new(After May 2018)
28.7	503130002	BB-228AEG-02-04	right fixed block	右上固定块	1	old
	503130029	BB-228AEG-02-04-A		右上固定块2		new(After May 2018)
28.8	305040013	BB-228AEG-02-10	Door ventilation blocks	门通风栅格	1	
28.9	505030027	BH-6B22C1M-1-LS5A-01	door handle	门拉手5A	1	replace:300000076
29	501001116	BG-7B22B1-1-DYX-01	power cable	CAT电源线	1	
30	501000932	BF-6A22E3E3-3-PX-01	Internal wiring	1套配线	1	
31	502010148		nut M6	M6法兰螺母	1	
32	305060090	BA-319ATB-1-03-01	Fan blades	扇叶-A	2	
33	501001138	BF-6A31E7E1-1-LQ-01	Cooling motor assembly	冷却电机组件1B	1	replace:501000939
34	305060163	BA-319ATB-1-02-02-T1	Insulation board	隔热板3-1	1	
35	505070001	BB-228AEG-18	Thermostat ground blade	温控器接地片	1	
36	305060175	BF-296D-1-02-03-T1	The wind deflector	导风板4-1	1	
37	505060059	BG-224AG-5-11-00-T1	Left door link member	左门连杆-4	1	
38	505060060	BG-224AG-5-12-00-T1	right door link member	右门连杆-4	1	
39	501000936	BF-6A22E3E3-3-KZ-01	PCB	电控板组件	1	September 2020 to stop using
39	501001748-O		B3-Display control panel	E3-1-red显示板组件	1	Starting in September 2020, these two parts are used together.
39.1	501001751-O		B3-Power Board	E3-power电源板组件	1	
40	501001156	BF-6A31E7E1-1-DL-01	Convection motor assembly	对流电机组件6B	1	replace:501000940
41	502010147		nut M6	M6法兰螺母	1	
42	305040270	BA-6A31E7E2-1-FZ-01-T1	Fan cover	风扇罩-B3	1	
43	501000585	BD-318AE-3-01-03	rear heating element(2200W)	环形加热组件5	1	Stop using from 17W19
	501001070	BF-6A31E7E1-1-HXG-01		环形发热管5-1		Started to use from 17W19
	501001585	BF-6A31E7E1-1-HXG-01-T1		环形发热管5-1A	1	Used since March 2019
44	501000725	BF-6B29C4-01-03-01	bottom heating element	底发热管5	1	
	501001589	BF-6B29C4-01-03-01-T1	bottom heating element	底发热管5-1	1	Used since March 2019
45	305040097	BB-228AEG-01-03-06	Bottom heating seat	底加热座1	1	
46	505060040	BG-224AG-5-15	Back baffle	背挡板	1	
47	503120071	BF-6A22E3E3-2-AJ-01	button	按键-B4	6	
	503120092	BF-7A18D2E3-2-AJ-01	Timer button	按键-B7	6	Orders in 2020 start using it

UBEMF610 Wiring diagram

