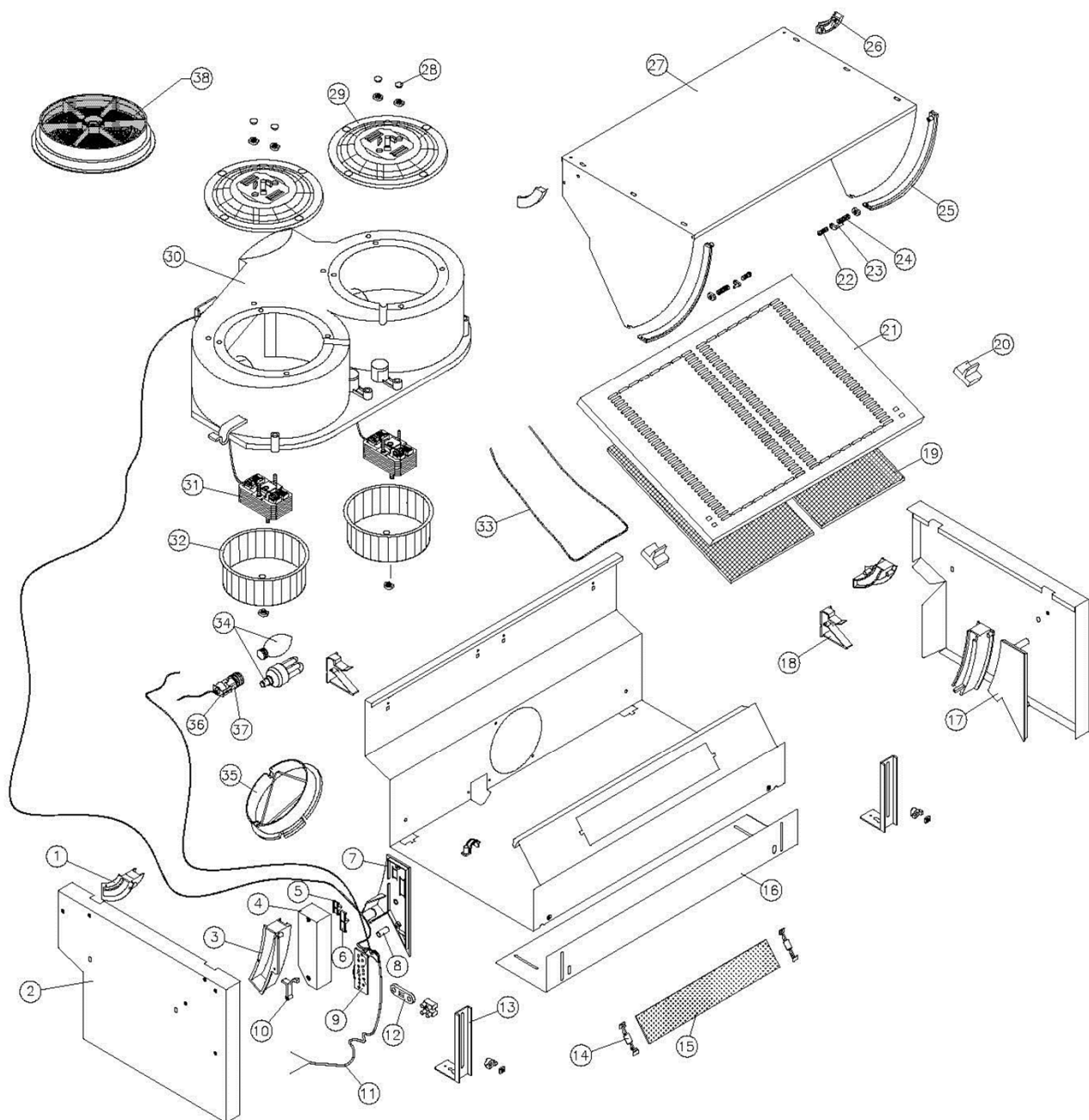


IHD60SV_IHDT60SV_INTD60 (I4260)

Version: 04

Date: 2017-02-10

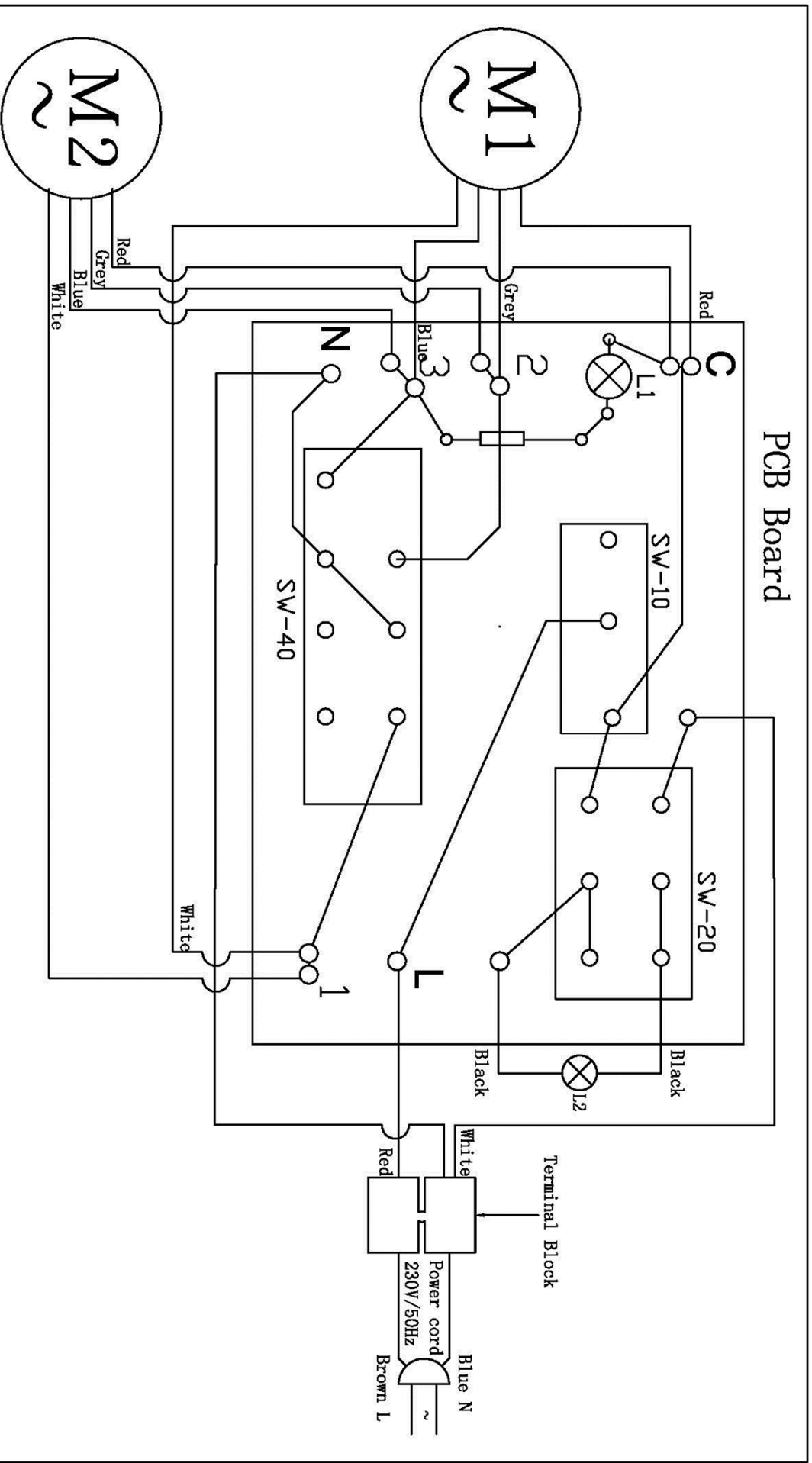
IHD60SV_IHDT60SV_INTD60 (I4260) Exploded drawing



04	Change two lamps to one lamp	Sam Yan	2017/2/10
03	Add model IHDT60SV, INTD60 in the drawing	Sam Yan	2014/3/6
02	Change the item 29 from 20131967 to 20110753	Sam Yan	2012/11/6
01	Added the energy saving lamp into the drawing and changed the bulb from 20131006 to 69000075	Sam Yan	2011/7/17
00	New document	Sam Yan	2009/8/14
Index	Modify description	Modified by	Date

IHD60SV_IHDT60SV_INTD60 (I4260) Part list

No.	Part No.	Part Name	Qty.	Remarks
1	20136070	Grey Upper Internal Guide-hood-I4060	2	
2	20136085	Grey Cooker Hood Casing-hood-I4060	2	
3	20136071	Grey Lower Internal Guide-hood-I4060	2	
4	20132200	Control Box-hood-I4060	1	
5	20136072	Grey Light Button-hood-I4060	1	
6	20136073	Grey Motor Button-hood-I4060	1	
7	20136074	Grey Control Box Cover-hood-I4060	1	
8	20133209	Pilot-Hood-I4260	1	
9	20136027	Printed Circuit with Micro-switch-hood-I4260	1	
10	20136022	Micro switch Lever-hood-I4260	1	
11	60100015	UK Supply cord 2M w/o plug	1	
12	20131522	Wire Fixing Bridle-hood-I4260	5	
13	20136005	Fixing Cooker Hood Back Guide-hood-I4260	2	
14	20136075	Grey Fixing Glass-hood-I4060	2	
15	20131928	Light glass-hood-I4260	1	
16	20136076	Grey Wall Distance-hood-I4060	1	
17	20136077	Grey Right Lateral Cover-hood-I4060	1	
18	20136078	Grey Grate Upper Mounting-hood-I4060	2	
19	02844060	Metal Filter-hood-I4260	2	
20	20136079	Grey Grate Locking-hood-I4060	2	
21	20136080	Grey Grate-hood-I4060	1	
22	20136015	Blocking Guide Snug-Hood-I4260	2	
23	20136081	Grey Guide Directional-hood-I4060	2	
24	20136014	Spring-Hood-I4260	2	
25	20136082	Lower Grey Guide-hood-I4060	2	
26	20136083	Grey Right Upper Guide-hood-I4060	2	
27	20136084	Grey Frontal Casing-hood-I4060	1	
28	20131521	Snug Protect Screw Motor-hood-I4260	4	
29	20110753	Motor Cover Suport-hood-TF5260	2	
30	20131999	2 Motor Fixing Casing-Hood-I4260	1	
31	20110770	Motor Left-hood-TF5260	2	
32	20110768	Turbine Left-hood-TF5260	2	
33	20136002	Metal filter Fixing Stick-hood-I4260	1	
34	69412255	E14 halogen Bulb 220-240V 28W-Hood	1	
	25100550	Energy saving lamp 7W 220V-Hood-LCT013	1	
35	20136032	Outlet Tube Reducer-hood-I4260	1	
36	20131865	Lamp Holder Suport-hood-F2060	1	
37	20131858	Lampholder assembly without bracket-hood-F2060	1	
38	02846762	F charcoal filter-Hood-F/ TF Hood	1	Optional



I-4260抽油烟机				图号 I-4260-00-02	
接线图				数量	
图样标记				件/台	
A					
共	页	第	页	中山高威通风设备 制造有限公司	

- Instruction:
- 1、M1 M2: Shaded Pole Motor
 - 2、Terminal Block: 230 type 2terminals;
 - 3、L2: Bulb 40W x 2
 - 4、L1: Pilot, Neon lamp
 - 5、R1: Resistance 100KΩ
 - 6、Main switch: SW-10
 - 7、Slide switch: SW-20 (light switch), SW-40 (Motor switch)
 - 8、Cables: UL1007 22AWG.