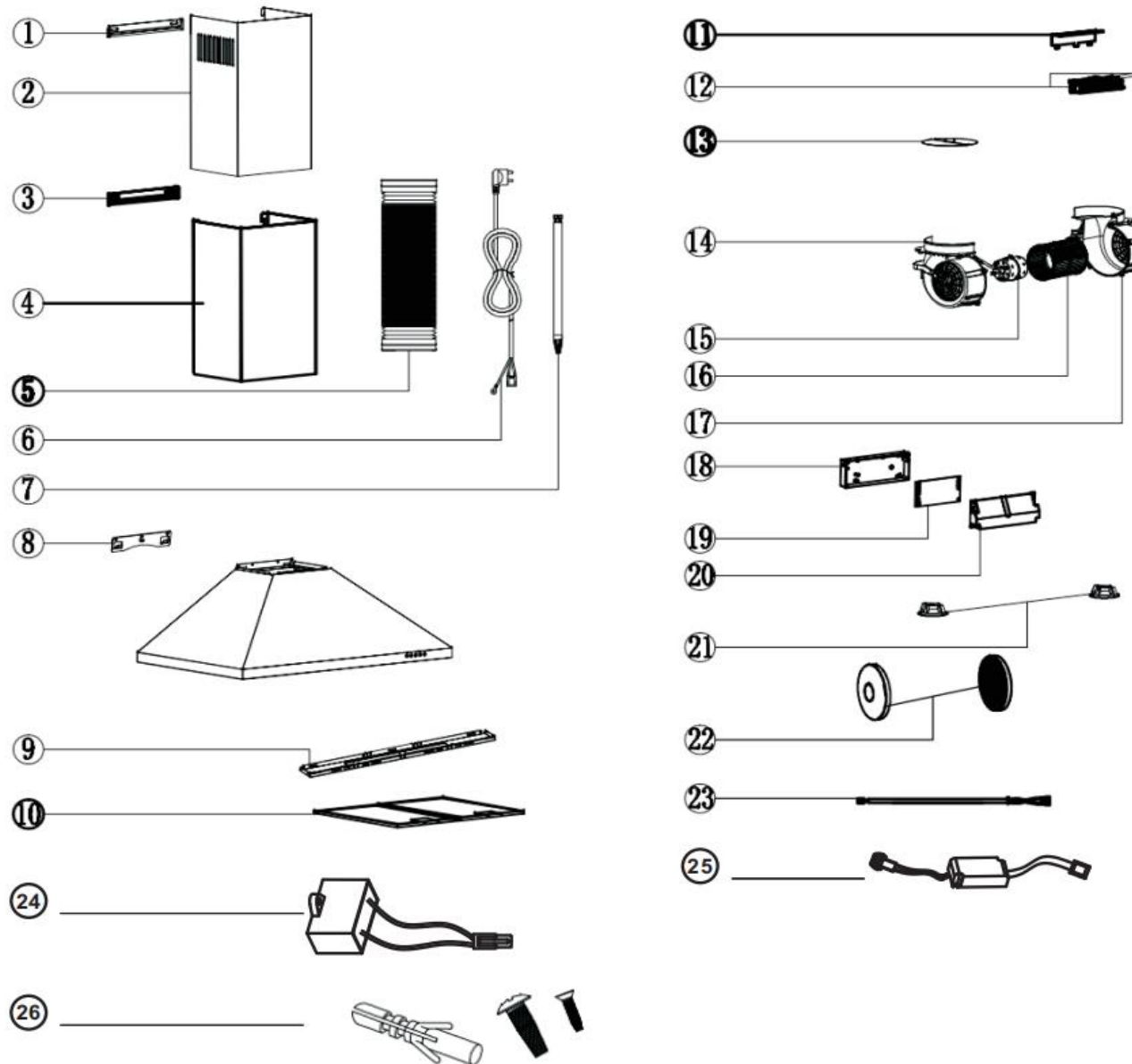


Cooker Hood
Model Number
CHIM90SSPF
Parts Manual

Exploded Drawing



Parts List

PN	Apelson PN	MPN	Description	QTY	REMARK
1	AA0000000297	B23-TD08-006-PX	TD INNER CHIMNEY BRACKET	1	
2	AA0000000296	B20-TD08-008-PX	TD INNER CHIMNEY	1	
3	AA0000000295	B23-TD08-005-PX	TD OUTER CHIMNEY BRACKET	1	
4	AA0000000294	B20-TD08-007-PX	TD OUTER CHIMNEY	1	
5	AA0000000278	B36-TT03-018-XG	Φ150 SMOKE TUBE	1	optional
6	AA0000000324	B67-TY04-005-XB	WIRE ONLY, WITHOUT PLUG	1	
7	AA0000001163	B67-TY03-267-XX1	SWITCH CABLE	1	
8	AA0000000302	B23-TG18-027-PX	BRACKET	1	
9	AA0000000853	B20-TD08-030-PX	REAR LAMPSHADE -90	1	Part no is not available now
10	AA0000000495	B35-TD08-026-XX	5 LAYERS ALUMINIUM FILTER	3	
11	AA0000000663	B23-TD06-007-XX	SWITCH HOLDER	1	
12	AA0000000849	B60-TY05-005-XX	PUSH BUTTON -M02	1	
13	AA0000000288	B30-TG18-015-JB	Φ150 VALVE	2	
14	AA0000000325	B30-TD02-026-JB	HOUSING S -LEFT PART	1	
15	AA0000000286	B61-TY02-004-XX	HOUSING S MOTOR	1	
16	AA0000000276	B30-TD02-016-JB	FAN	1	
17	AA0000000322	B30-TD02-027-JB	HOUSING S -RIGHT PART	1	
18	AA0000000496	B30-TD08-018-JB	E14 ELECTRIC CONTROL BOX(BOTTOM)	1	
19	AA0000001161	B63-TY12-281-XX	PCB	1	Old
	AA0000000848	B63-TY12-281-XX3			New from 18W20
20	AA0000000292	B30-TD08-019-JB	E14 ELECTRIC CONTROL BOX(COVER)	1	
21	AA0000000308	B62-TY01-016-XX	LED LAMP -L07	2	
22	TMFILT3	B15-TD02-024-JB	CHARCOAL FILTER	2	optional
23	AA0000000377	B67-TY03-022-XX	LED LIGHT WIRE	1	
24	AA0000000870	B64-TY08-249-XX1	CAPACITOR	1	
25	AA0000001162	B63-TY07-011-XX	LED DRIVE POWER BOX	1	Old
	AA0000000679	B63-TY07-011-XX1		1	New from order 18W20
26	AA0000000726	C08-1000-001-BX	SCREW BAG	1	