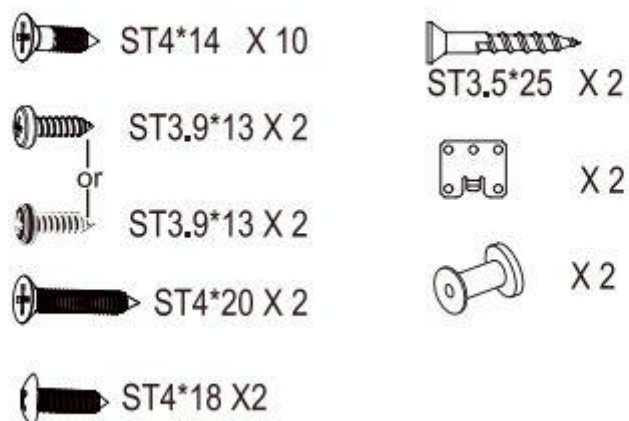




Dishwasher:DWI60M

60cm door template part number 675001800357

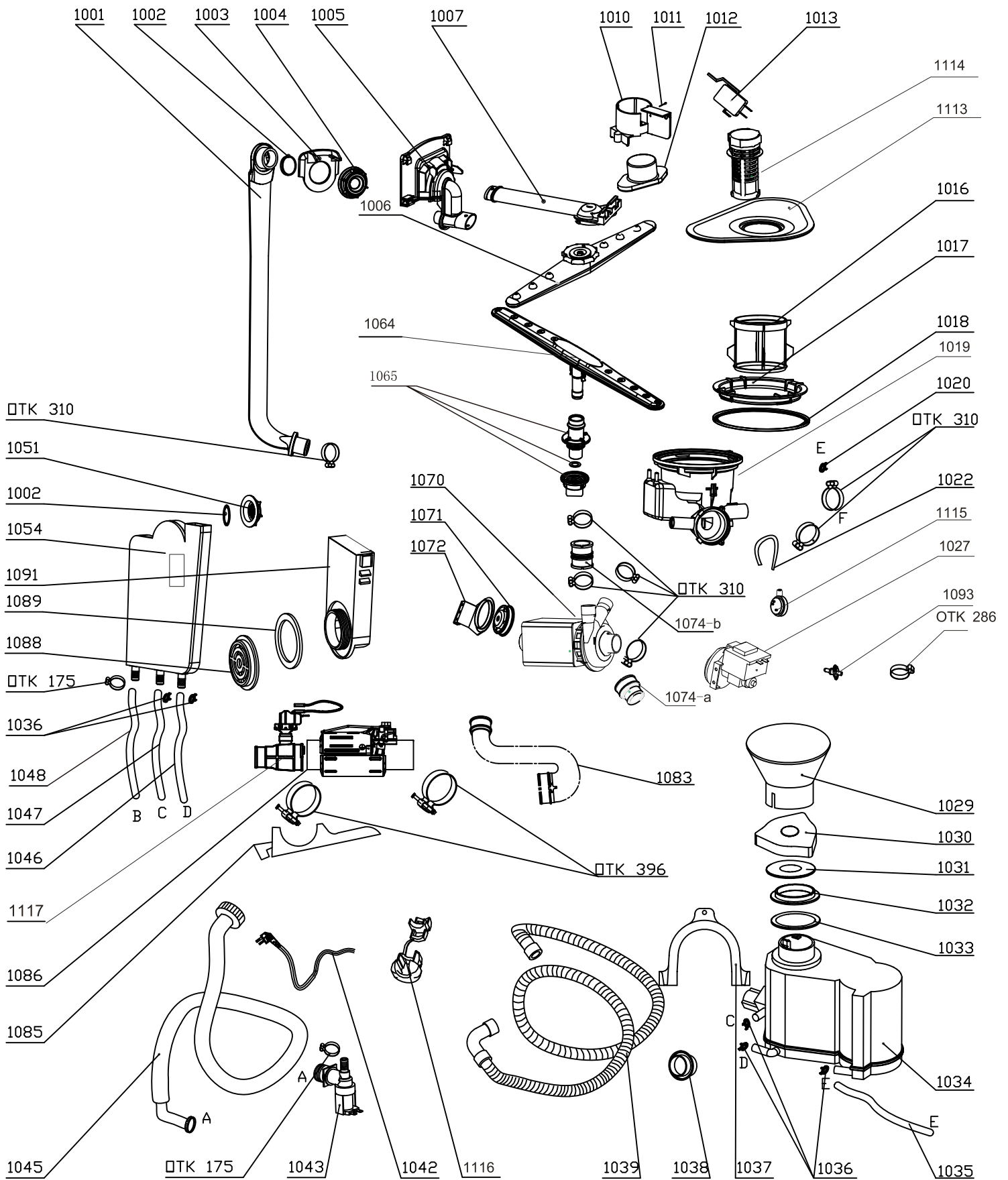
Installation Kit part number 670400058002



Version:00

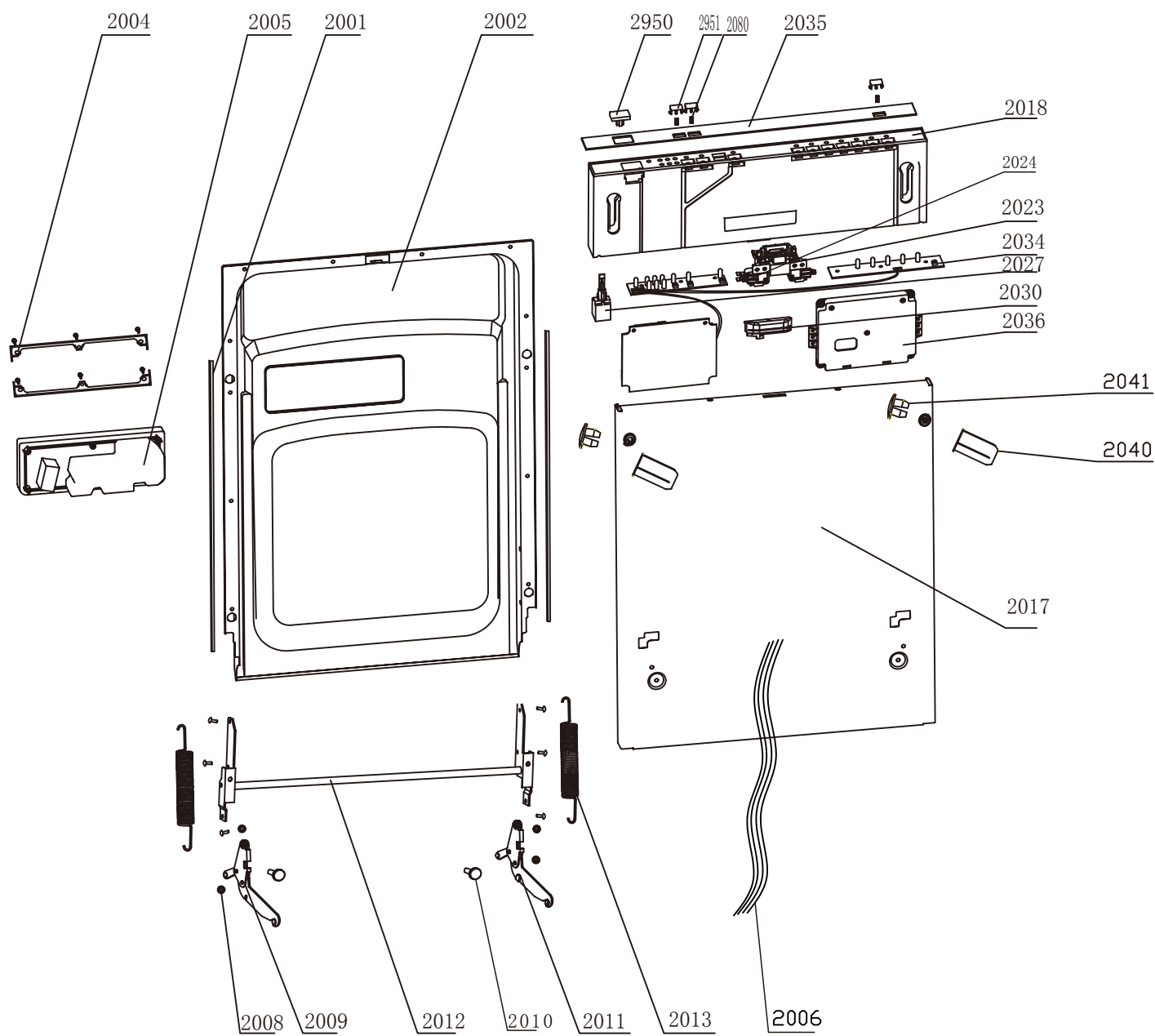
Date:2014-05-23

DWI60M Exploded drawing(1)



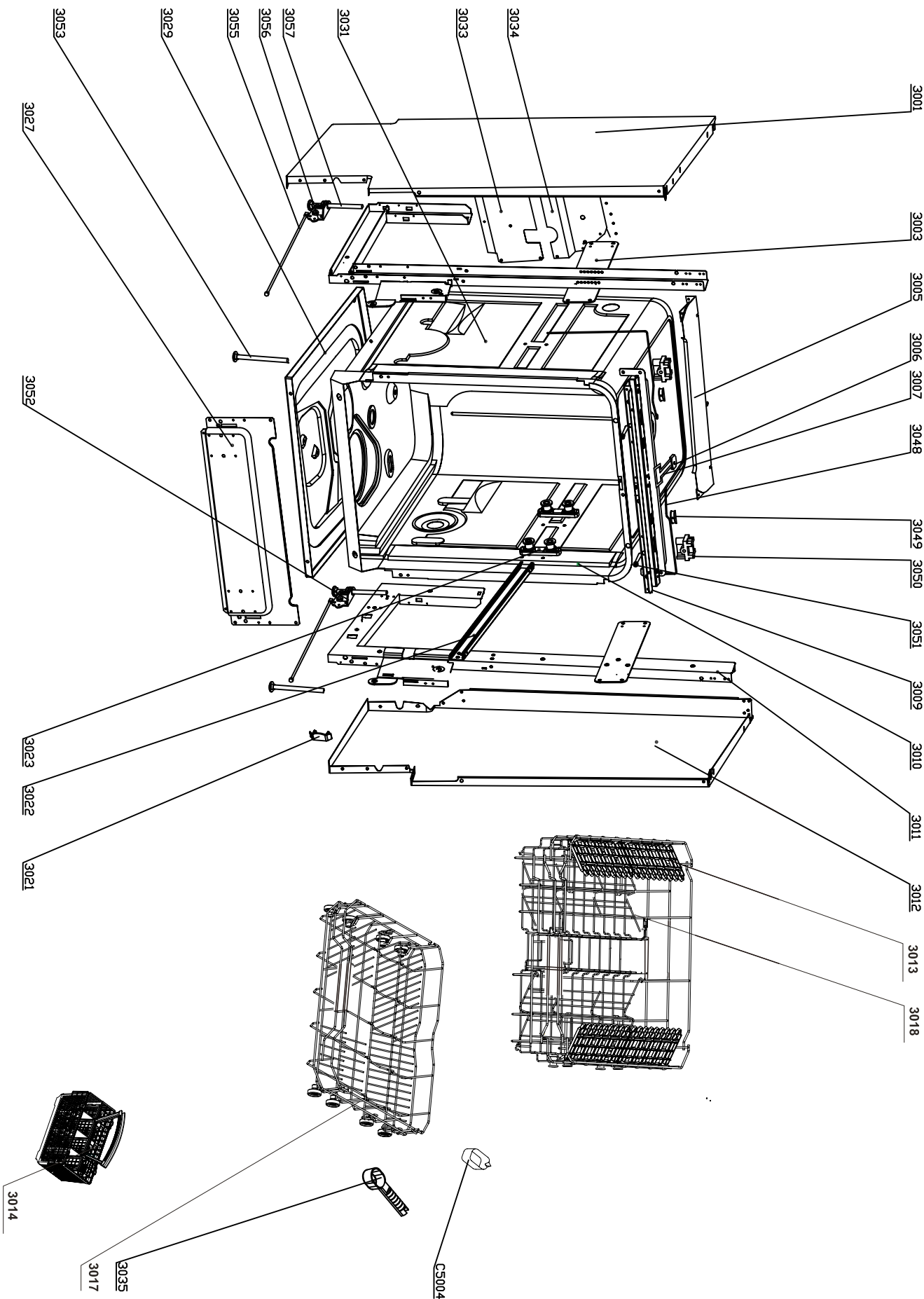
00	New document	Eason	2014. 5. 23
Index	Modify description	Modified by	Date

DWI60M Exploded drawing(2)



00	New document	Eason	2014. 5. 23
Index	Modify description	Modified by	Date

DWI60M Exploded drawing(3)



00	New document	Eason	2014. 5. 23
Index	Modify description	Modified by	Date

DWI60M parts list(1)

NO.	Part code	part description	Quantity
1001	673000900223	External pipe	1
1002	673001500005	O Ring I 31.5X3.55	2
1003	673001800364	Guide casing	1
1004	673001600021	External pipe nut	1
1005	673001900038	Water dispenser	1
1006	673000310006	Upper sprayer	1
1007	673000900195	Upper sprayer pipe	1
1012	673002300003	Float	1
1016	673002500072	Micro filter	1
1017	673001600022	Sump nut	1
1018	673001500122	Sump gasket	1
1019	673000700081	Sump	1
1020	672000700028	Clamp 12.7×1.8	1
1022	673000900073	PVC hose	1
1027	674000600106	Drain pump	1
1029	673002200043	Salt filler	1
1030	673002800050	Softener cover assembly	1
1031	673001700080	Softener cover gasket	1
1032	673001600039	Softener nut	1
1033	673001700001	Softener gasket	1
1034	674000700020	Softener	1
1036	672000700029	Clamp 14.5×1.8	3
1037	673006200027	Drain hose hook	1
1038	673001500002	Drain hose holder	1
1039	673000900251	Drain hose	1
1042	674000000194	Power cord	1
1043	674000200002	Inlet valve	1
1045	673000900205	Inlet hose assembly	1
1046	673000900026	Regeneration hose	1
1048	673000900237	Inlet hose of air breather	1
1051	673001600025	Air breather nut	1
1054	673002700607	Air breather assembly	1
1064	670400051614	Lower sprayer	1
1065	673001200027	Lower sprayer connection assembly	1
1070	674005600080	Washing pump	1
1083	673000900045	Bend connect hose	1
1085	673001400025	Heating element support	1
1086	674001100044	Heating elements	1
1088	673001600024	Water inlet nut	1
1089	673001500019	Water inlet gasket	1
1091	673002600063	Water inlet	1
1093	674000900053	Sensing device	1
1113	672000600021	plane filter	1
1114	673001300179	Scran collection	1
1115	674000302020	Pressure switch	1
1116	673001400083	power cord clasper	1
1117	674000302006	pressure switch assembly for heating elements	1
2001	673002000042	Door edge guard piece	2
2002	672002200362	Inner door	1
2004	672001700002	Dispenser bracket	2
2005	674000800058	Dispenser	1
2006	674000102027	Wiring harness	1
2008	672000500006	Ring Φ6	4
2009	672001300029	Left hinge	1

DWI60M parts list(2)

2010	672001200012	Joint pin	2
2011	672001300030	Right hinge	1
2012	672001300024	Door gemel assembly	1
2013	672000100008	Door spring	2
2017	672001800315	Outer door	1
2018	673000405856	Control panel	1
2023	674000301001	Handle assembly	1
2024	674010030000	Door switch	1
2027	674000300065	Power switch	1
2030	673002800041	Control panel cover	1
2034	674001001637	Control board	1
2035	673002903325	Control panel film	1
2036	673002400190	Control board box	1
2040	673001800018	Screw sleeve	2
2041	673000700005	Sleeve cover	2
2080	672000100012	button spring	3
2950	673000811063	Power button	1
2951	673000801822	Program key	3
3001	672001600212	Left side panel	1
3003	672002190005	Left uprights	1
3005	672001500008	Upper rear crosspiece	1
3006	673001300634	door clamp	1
3007	672001400039	door lock	1
3009	672001500318	Upper front crosspiece	1
3010	673001700079	Tank gasket	1
3011	672002190006	Right uprights	1
3012	672001600211	Right panel	1
3013	673001300102	Upper basket cup holder	4
3014	673002200099	Cutlery basket assembly	1
3017	672000803080	Lower basket	1
3018	672000800345	Upper basket	1
3021	673001300181	Rail block	2
3022	672001701000	Rail	2
3023	673001401005	Rail support assembly	4
3027	672001503004	Lower front crosspiece	1
3029	672002000066	Base tray	1
3031	672001902102	Tank	1
3033	672001500202	Lower rear crosspiece	1
3034	672001500007	Middle rear crosspiece	1
3035	673002200079	Measurable spoon	1
3048	672001100004	Adjust steel rope	2
3049	672002300002	Adjust nut	2
3050	673001300012	Top board hook	2
3051	672001100003	Adjust screw	2
3052	673001400146	Right adjuster holder assembly	1
3053	672001400045	Front foot	2
3055	672001100002	Adjustable pole	2
3056	673001400145	Left adjuster holder assembly	1
3057	672001400046	Back foot	2
1010/1011/1013	673001490016	Float support assembly	1
1035/1047	673000900224	Softener pipe	2
1071/1072	672000200054	Washing motor support	1
1074-a	673000900228	Connect hose a	1
1074-b	673000900229	Connect hose b	1
C5004	673006200004	rinsing agent cup	1
OTK 175	672000700004	OTK 175	2
OTK 286	672000700003	OTK 286	1
OTK 310	672000700001	OTK 310	7
OTK 396	672000700007	OTK 396	2