



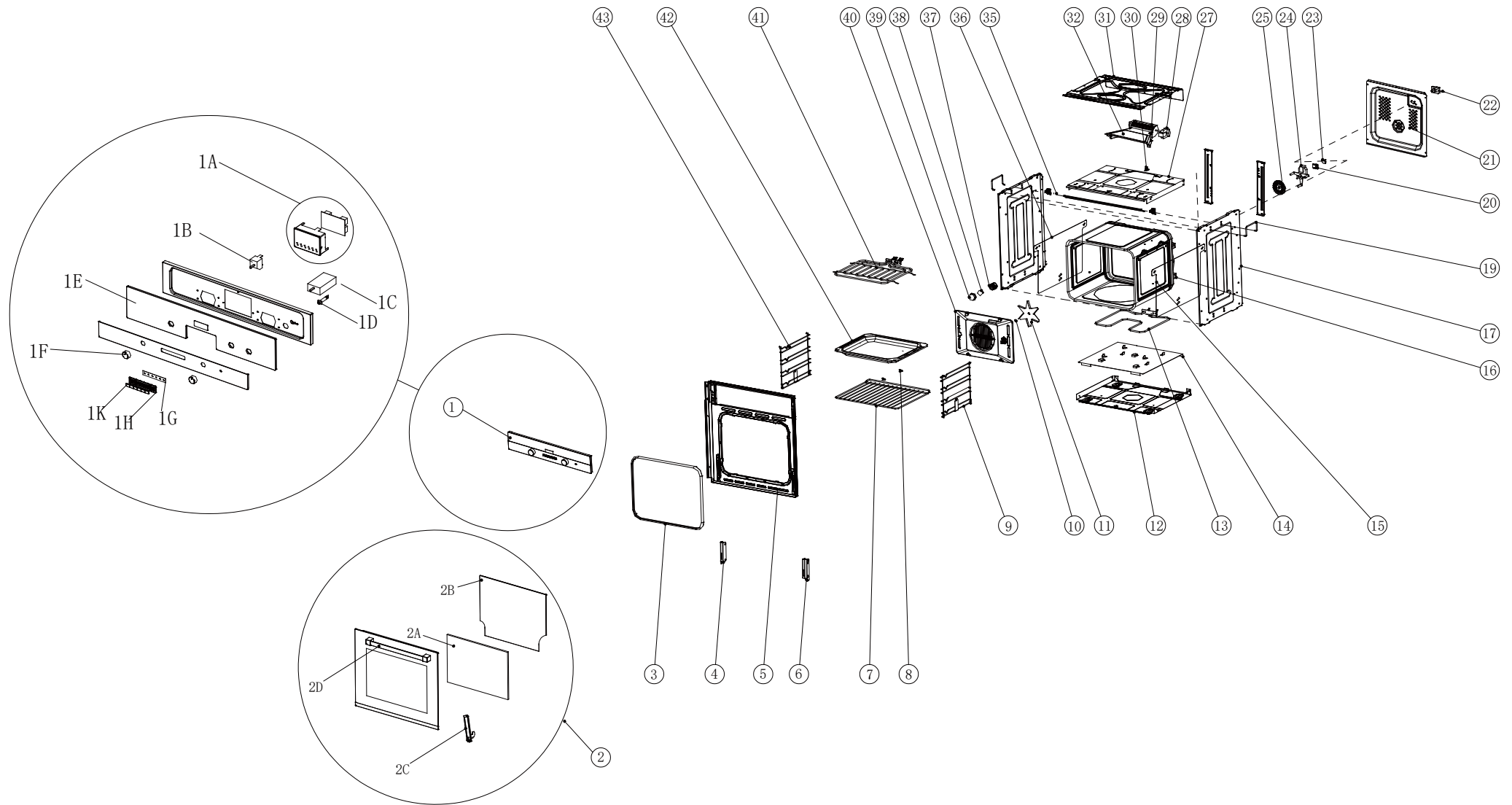
Oven:OV7C-BF5

Version:00 (a)

Date:2016-11-23

Product reference code: 343331

OV7C-BF5 Exploded drawing



01	New document	Eason	2016.11.21
Index	Modify description	Modified by	Date

OV7C-BF5 parts list

No.	part code	factory code	part name	chinese name	Qty
1	25107645		Control panel assembly - OV7C-BF5	OV7C-BF5电烤箱开关面板组件	1
1A	25102590	GH-N800I/A-00-09 GH-B600-00-16-01 GH-B600-00-16-02B	Minute counter+PCB(red)-OVEN-DECOR 800 /A	六键按键红色PCB	1
1B	25105140	GH-MBD606/B-30-03(B)	WYF280AC temperature control-oven-A3 Multi	调温开关	1
1C	25106715	GH-ME605TC/A-30-01(A)	function selector	功能开关	1
1D	20103115	SL-656P22(ORANGE)	orange pilot light-oven-ME611DI	橙色指示灯	1
1E	25105115	GH-CD760-30-01(D)	switch panel glass	控制面板玻璃	1
1F	25105605	GH-EF60BKG-00-04	knob ass'y C03i-oven-EFM60BKG	C03i旋钮	2
1G	60500075	GH-B600-00-16-03	Press key rubber piece	按键胶	1
1H	60702170	GH-CD760-10-01	Press panel oven CD760	按键板	1
1K	60702165	GH-CD760-10-02	Press key oven CD760	按键帽	6
2	25107640	GH-OV7C/BF5-00-02	Complete door assy(no brand)-oven-OV7C-BF5	OV7C/BF5电烤箱炉门总成(配A01拉手, 三层玻璃)	1
2A	69411950	GH-EFPY60BK-30-08	middle glass	门中玻璃	1
2B	69410175	GH-HGR9S-B-30-01	inner glass-oven-HGR BK/A	炉门后板	1
2C	20103120	GH-B600-00-04-00(B)	single hinge assembly-oven-ME 611 DI	铰链组件	2
2D	60703345	BG6-30-06	A01-door handle	A01拉手	1
3	60501095	GH-HGR9S-B-30-05/D	Door sealing asm.-oven- DECOR 900 TCS	门密封胶条 (组件)	1
4	62901560	GH-EFPY60BK-20-06(A)	Hinge supporter(left)-oven-CD760WH	EFPY60BK自洁烤箱左铰链固定座	1
5	25106350		Door frame-oven-CD760WH	门框架总成	1
6	62901565	GH-EFPY60BK-20-07(A)	Hinge supporter(right)-oven-CD760WH	EFPY60BK自洁烤箱右铰链固定座	1
7	25107650	OV7C/BF5-10-01 (A)	shelf-oven-OV7C-BF5	电烤箱烤架	1
8	62901540	GH-B600-00-22-03(A)	Clip for thermostat	B600电烤箱调温开关传感器夹	2
9	25103845	GH-N800I/A-00-05A(F)	Right lateral Grille-oven-ME 611 DL/A	N800IND电烤箱右网架	1
10+11+ 24+25	25102900	GH-B600-00-39(A) ME607I/B-00-06/B ME607I/B-00-13(B) GH-B600-00-35(A)	rear fan assembly(short)-oven-ME 607 I/B	带帽六角螺母 ME607I/B电烤箱风扇大风叶 ME607I/B电烤箱风扇电机YZF6315-007 (减短) B-600电烤箱风扇小风叶	1
12	20103126	GH-B600-00-11(B)	Lower oven casing oven ME611DI	箱体底板	1
13	25100140	GH-SE604I/B-00-13(C)	Lower resistance 1300W- oven-SE604I/B	SE604I/B电烤箱下发热架	1
14	20103127	GH-SE604I/B-00-04(D)	Lower resistance casing-oven-ME611DI	SE604I/B电烤箱下发热架挡板	1
17	20103109	GH-B600-00-09(E)	Left side oven casing oven ME611DI	B600电烤箱箱体侧板	2
19	62901030	GH-B600-00-12(A)	lateral handle-oven-ME611DI	B600电烤箱提手	2
21	20103106	ME607I/B-00-01(E)	Rear Casing Plate-oven-ME611DI	ME607I/B电烤箱箱体后板	1
22	69401545	GH-B600-00-44	Power box + wire-oven-MDP 608	B600电烤箱电源盒总成	1
23	20102959	KSD020-1A	thermostat(145°C)-oven-ME611DI	过热保护温控器	1
26	55001220	GH-SE604I/B-00-05(G)	casing rear supporter-oven-CM760	SE604I/B电烤箱后支撑架	2
27	20103107	GH-B600-00-08(H)	Wind Chamber Cover-oven-ME611DI	B600电烤箱箱体顶板	1
28+29+ 32	64900860	GH-B600-00-07-04 GH-B600-00-07 GH-HGR9S-B-20-07 (A)	Cooling fan-oven-CD760WH	B600电烤箱风柜电机 YZF-600-2 B600电烤箱风柜总成 HGR9S-B电烤箱风筒	1
30	20102958	KSD020-1	thermostat(80°C)-oven-ME611DI	风柜运行温控器	1
36	69409905	GH-CEFG60SS2-20-02(A)	Catalitic Panel-oven-CLMF2BK-C	CEFG60SS2炉腔挂板	2
37+38+ 39	25101680	GH-B600-00-43 XK7 GH-B600-00-41 GH-B600-00-42	lamp assembly-oven-MDP 608	B600电烤箱灯头组件 电烤箱灯泡 B600电烤箱灯罩	1
40	62901665	ME607I/B-00-03 (E)	later fan cover(also as a Catalitic Panel)-oven-CLMF2BK-C	ME607I/B电烤箱风扇罩	2
41	25104950	GH-AMB500/C-01-02(A)	top grill (700W)	上发热架	1
42	20103123	GH-B600-00-26(B)	tray-oven-ME611DI	B600电烤箱汤盘	1
43	25101605	GH-N800I/A-00-05B(F)	Left Lateral Grille-OVEN-ME 611 DI DURALUM/A	N800IND电烤箱左网架	1

OV7C-BF5 Wiring diagram

