



Microwave Oven:UB38IMGBK

Product reference code:UB38IMGBK

Modified by:Eason

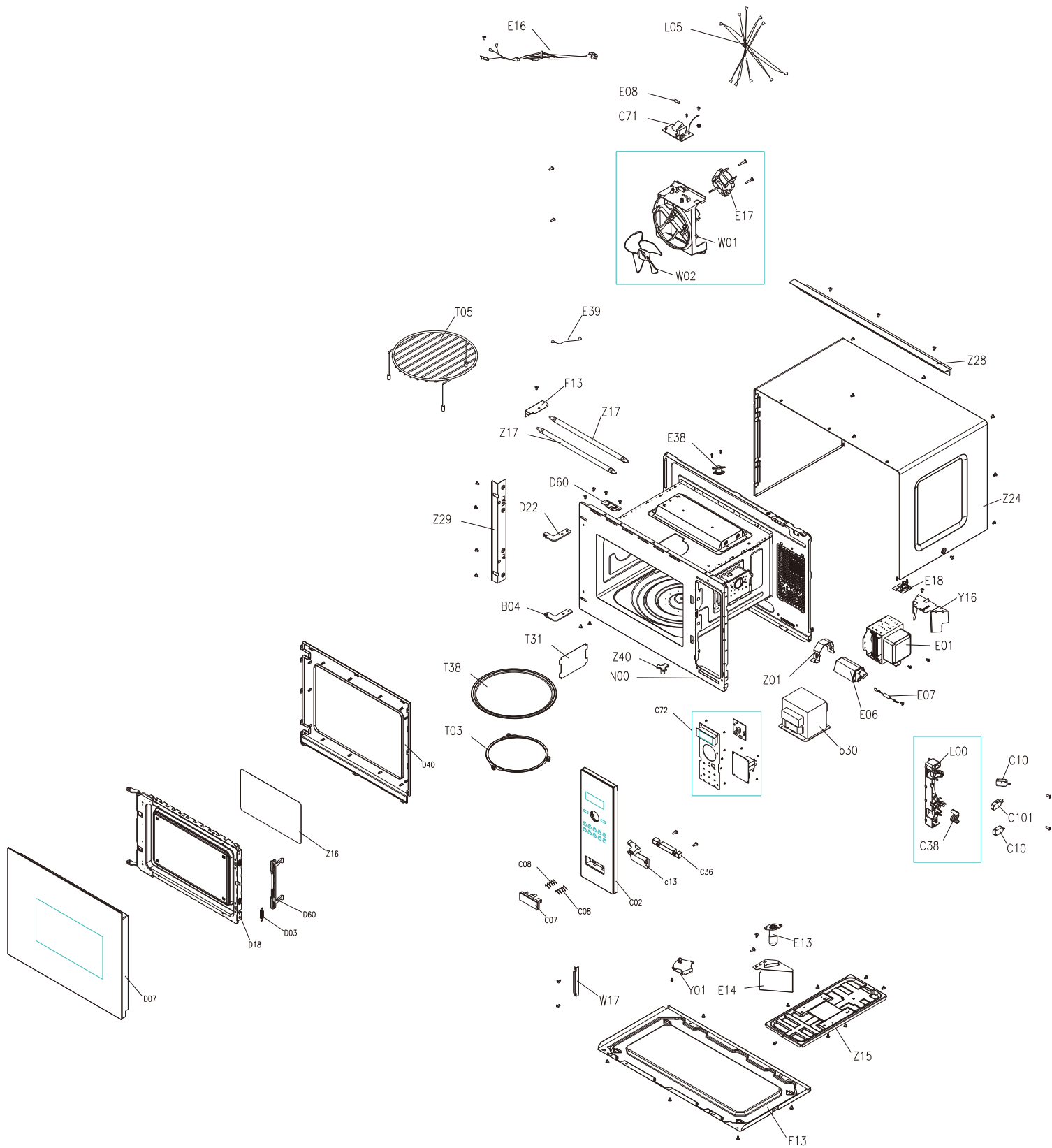
Modification:

00_2017.07.10 New document

01_2019.07.04 Add part code for E17

02_2022.01.17 Add part code for T31&Z40

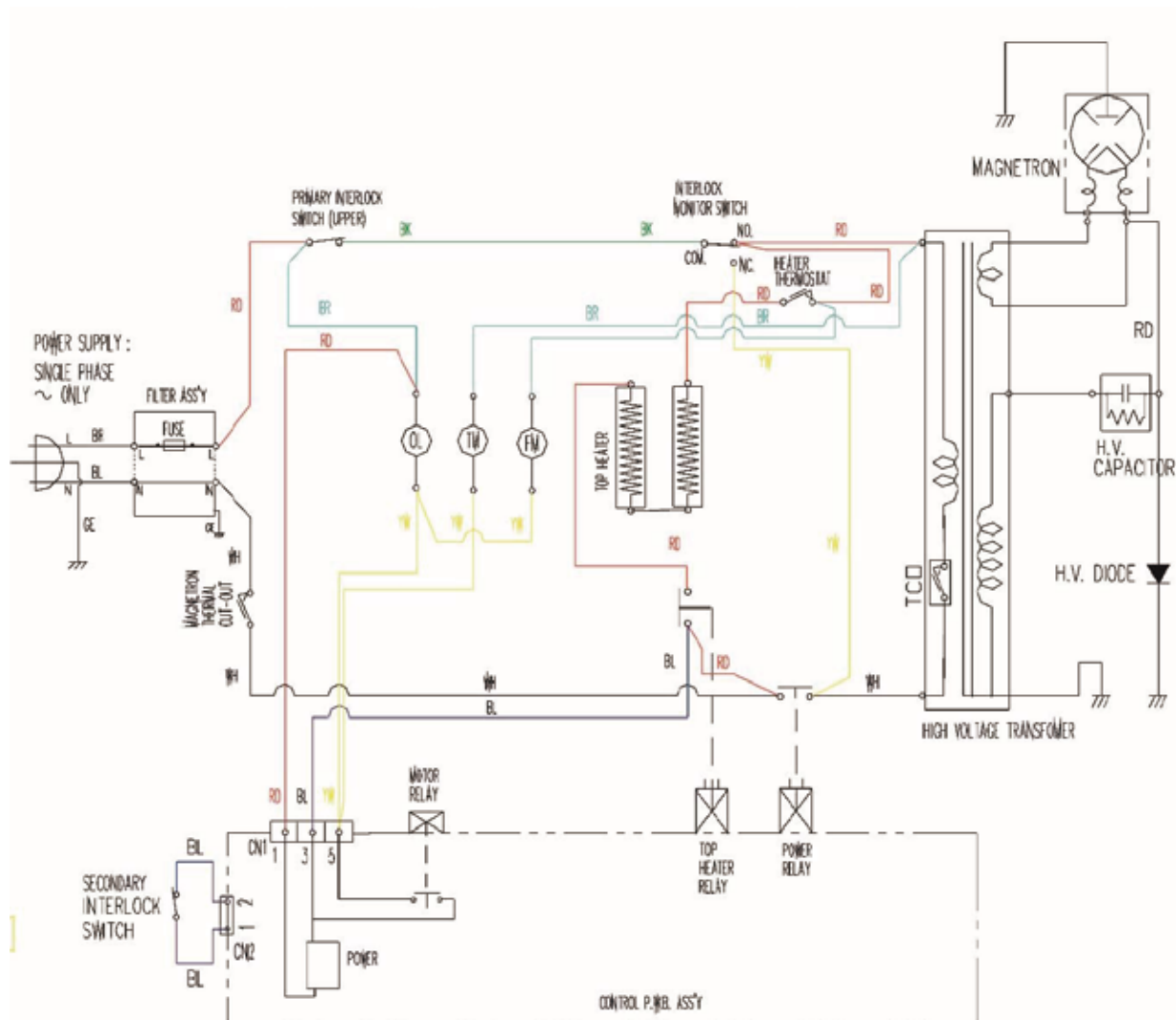
UB38IMGBK Exploded drawing



UB38IMGBK parts list

Drawing No.	Ref part code	Midea Part No.	Part Name	Qty
C72+C07+C08+C02+C13+C36	25107930	17270000B57247 +16070000002727 +16070000002730	Control box assembly	1
Z28	55001275	12270000022096	Wind deflector plate	1
E13	253600503976	17470000000626	FILAMENT LAMP	1
D40+Z16+D60+D03+D18+D07	25107935	12270000B32262 +12570000001866	Complete the door assembly	1
B04	261502503000	12270000000022	hinge	1
T02	252200100002	12170000000425	PLASTIC COUPLER	1
L02	261301101001	12170000007322	INTERLOCK LEVER	1
L03	261201600080	17470000002301	MICROSWITCH	2
L04	261201600070	17470000002303	MICROSWITCH	1
L00	25107940	12170000012410	Interlock bracket	1
L05	60101145	17470000008645	Internal wire	1
Z22	252200700003	12670000000424	SHOCKPROOF BLOCK	2
B01+Z15	261501420200	12270000005124	Bottom cover	1
G07	251501100003	12270000003500	QUARTZ HEATER CONNECTOR	1
T05	251511702194	12970000000300	Grill rack	1
E05	261200201560	17470000003635	H.V.TRANSFORMER	1
Z29	261550801402	12270000005549	Front plate bracket	1
E04/E21	251202701535	17470000002334	WIRE HARNESS	1
G06	261501000400	12270000008200	HEATER BRKT	1
E01	251200100068	17470000000809	MAGNETRON	1
E06	251200701304	17470000000689	H.V.CAPACITOR	1
G02	261200400960	17470000001123	QUARTZ HEATER	2
Z01	261501500300	12270000006211	CAPACITOR HOLDER	1
A01	252100100016	12570000001036	SPLASH COVER	1
T01	251200300001	11002014000037	synchronous motor	1
E43	261201300400	17470000001492	THERMOSTAT	1
E16	261201005040	17470000000162	power cable	1
T04	262100500004	12570000000990	GLASS TURNTABLE	1
E35+A16	263602100773	17470000000245	ASS'Y THERMOSTAT	1
Y16	251503101545	12270000008440	Wind deflector plate	1
E02	251202701048	17470000002341	WIRE HARNESS	1
W04/C43	261503202100	12270000000175	METAL WIND GUIDE COVER	1
T03	262200200023	12170000004334	ASS'Y SWIVEL	1
W17	261514201300	12270000003559	Install the block	1
E07	251200900861	17470000001006	H.V.DIODE	1
W01	251300803269	12170000004299	FAN GUIDE	1
W02	251300900016	12170000000206	FAN PIECE	1
W03	261200600710	11002017000384	Shaded-pole motor	1
E10+E11	263604400055	17170000002939	FLITER ASSEMBLY	1
E17	261200600710	11002017000384	fan motor,	1
T31	252100100016	12570000001036	SPLASH COVER	1
Z40	252200100002	12170000000425	PLASTIC COUPLER	1

UB38IMGBK Wiring diagram



[CONDITION]

DOOR : CLOSED

COOK : OFF

NOTE :

OL : OVEN LAMP

FM : FAN MOTOR

TM : TRAY MOTOR

BK : BLACK

RD : RED

WH : WHITE

YW : YELLOW

BL : BLUE

BR : BROWN

GE : GREEN/YELLOW