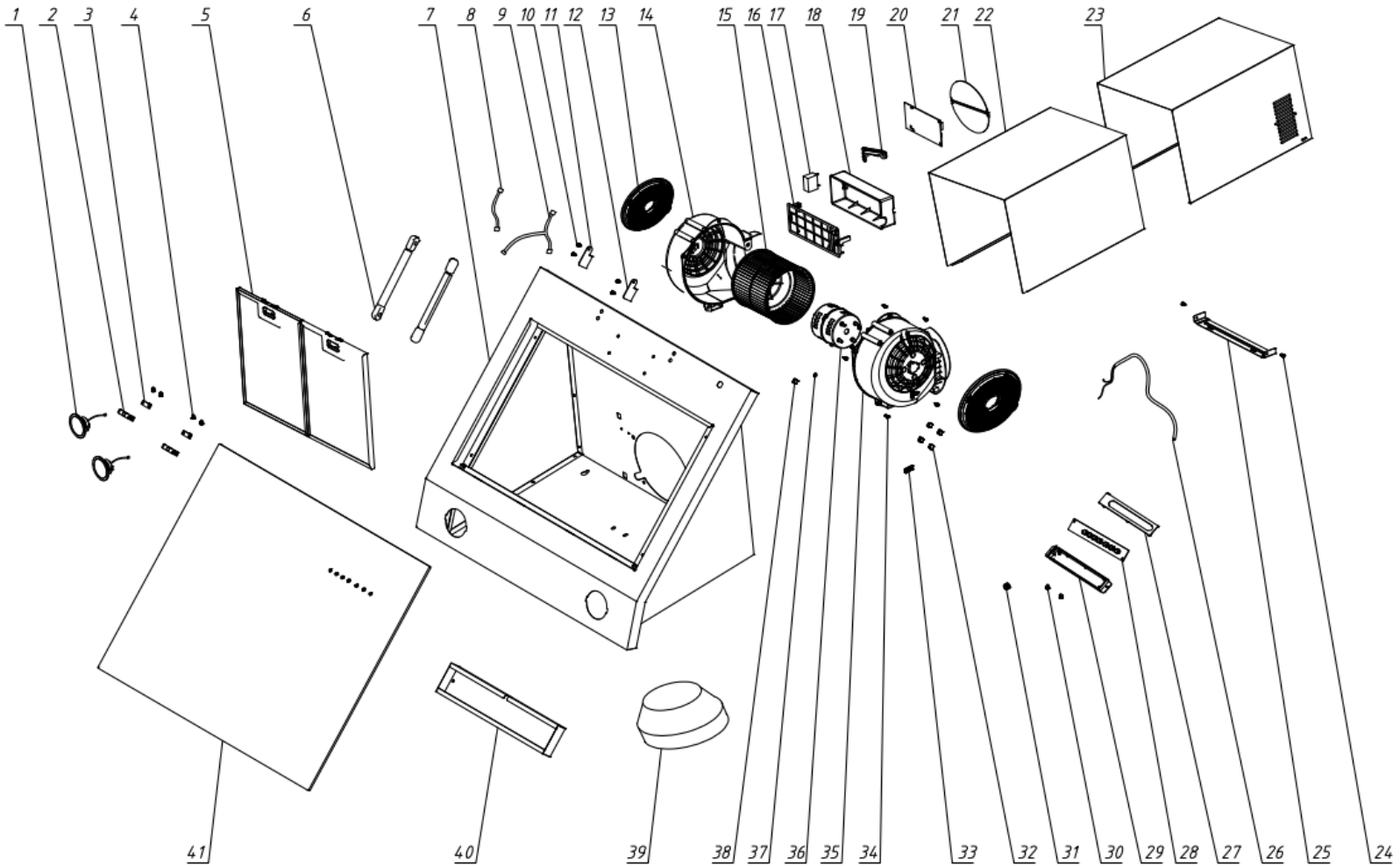


90cm White Angled Glass Cooker Hood

Model Number UBDAH90W

Parts Manual

Exploded Drawing



02			
01			
00			
Index	Modify description	Modified by	Date

Parts List

S/N	Ref.	Description	QTY	REMARK
41	7005010008	LARGE GLASS ASSEMBLY - WHITE	1	
40	7117105301	SWITCH BOX	1	
39	7121105350	OUTLET TUBE REDUCER 150 TO 120MM	1	
38	9132050002	NUT M5	1	
37	502010038	FILLER	1	
36	7131080020	MOTOR	1	
35	7121103010	RIGHT SHELL OF WIND CABINET	1	
34	9111351201	SCREW 3.5*12	13	
33	7121503080	WIRE GROOVE 2	1	
32	9131050002	LOCKING NUT M5	4	
31	7121104130	PROTECTION WIRE COVER	2	
30	16000009	SCREW M4*9	2	
29	7121106003	TOUCH CONTROL BOX	1	
28	7030300037	CONTROL PCB	1	
27	7121106004	COVER - TOUCH CONTROL BOX	1	
26	7136001707	POWER CORD WITHOUT PLUG	1	
25	7112106081	BRACKET - CHIMNEY	1	
24	16000009	SCREW M4*9	4	
23	7117105231	CHIMNEY - INNER	1	
22	7117105221	CHIMNEY - OUTER	1	
21	7121503060	RETURN VALVE	2	
20	7134050003	POWER PCB	1	
19	7121105330	WIRE GROOVE 4	1	
18	7121105050	COVER - POWER SUPPLY BOX	1	
17	7132030030	CAPACITANCE	1	
16	7121105040	POWER SUPPLY BOX	1	
15	7121503030	CN BLADE WHEEL	1	
14	7121103020	LEFT SHELL OF WIND CABINET	1	
13	7003080100	CHARCOAL FILTER	2	Optional
12	7117105641	HINGE	1	Use to 19W24
	7020100370	HINGE	1	Use from 19W51
11	7117105631	HINGE	1	Use fto19W24
	7020100369	HINGE	1	Use from 19W51
10	16000009	TRILOBULAR THREAD SCREWS M4*9	4	
9	7137100033	WIRING - LAMP	1	

8	7137100057	WIRE 850 - TOUCH SWITCH	1	
7	7010100220	BOX ASSEMBLY - WHITE	1	
6	7211405050	GAS BAR	2	
5	7001060100	ALUMINIUM FILTER	3	
4	9111290802	SCREW ST2.9*8	8	
3	7111105041	TOP DOOR LOCK BEAD	2	
2	7111105051	LOWER DOOR LOCK BEAD	2	
1	7135050003	LED LAMP	2	