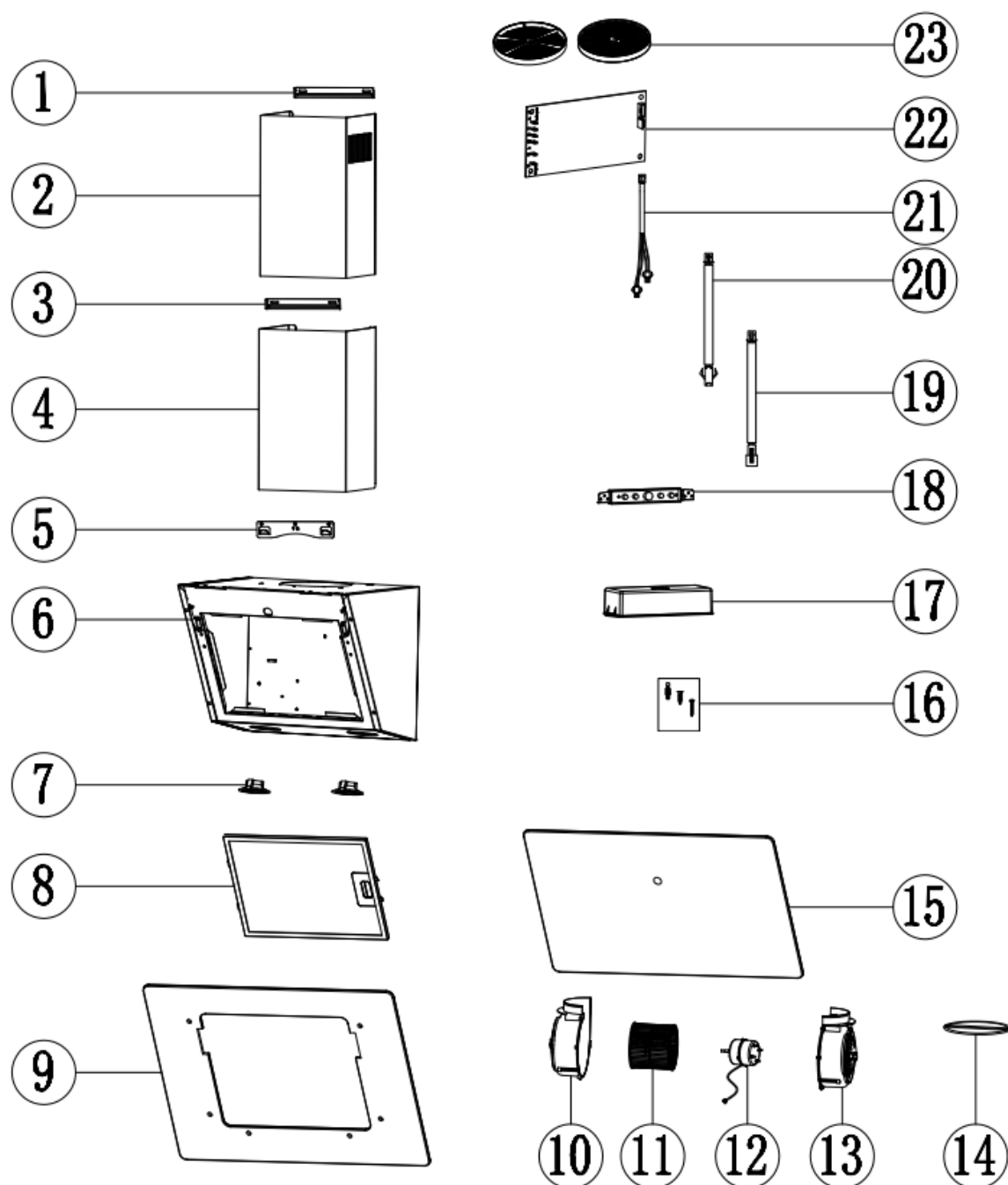


Cooker Hood  
Model Number  
ICON90H  
Parts Manual

# Exploded Drawing



## Parts List

S/N	Ref.	Description	QTY	REMARK
1	B23-TD08-006-PX	TD inner chimney bracket	1	
2	B21-TD08-008-TB2	TD inner chimney-black	1	
3	B23-TD08-005-PX	TD outer chimney bracket	1	
4	B21-TD08-007-TB2	TD outer chimney-black	1	
5	B23-TG18-027-PX	Wall bracket	1	
6	/	Cooker hood body	1	
7	B62-TY01-016-XX	LED lamp	2	
8	B35-TG01-036-XX	5 layers Aluminium Filter	1	
9	B33-TV20-014-XB	Glass black	1	
10	B30-TI01-029-JB	Housing D -left part	1	
11	B30-TT03-012-JB	Fan	1	
12	B61-TY02-029-XX	Housing D motor	1	
13	B30-TI01-028-JB	Housing D -right part	1	
14	B30-TG18-015-JB	Φ150 valve	1	
15	B33-TV20-027-XB	Glass frame white	1	
16	C08-1000-092-BX	Accessories bag	1	
17	B30-TG18-017-JB	Electric control box	1	
	B30-TG18-016-JB		1	
18	B63-TY07-262-XX	Switch-T02	1	
19	B67-TY03-042-XX	Switch wire- Section A	1	
20	B67-TY03-040-XX	Switch wire- Section B	1	
21	B67-TY03-009-XX	Light wire	1	
22	B63-TY07-015-XX	PCB	1	
23	B15-TF08-097-JB	Charcoal filter	2	Optional