



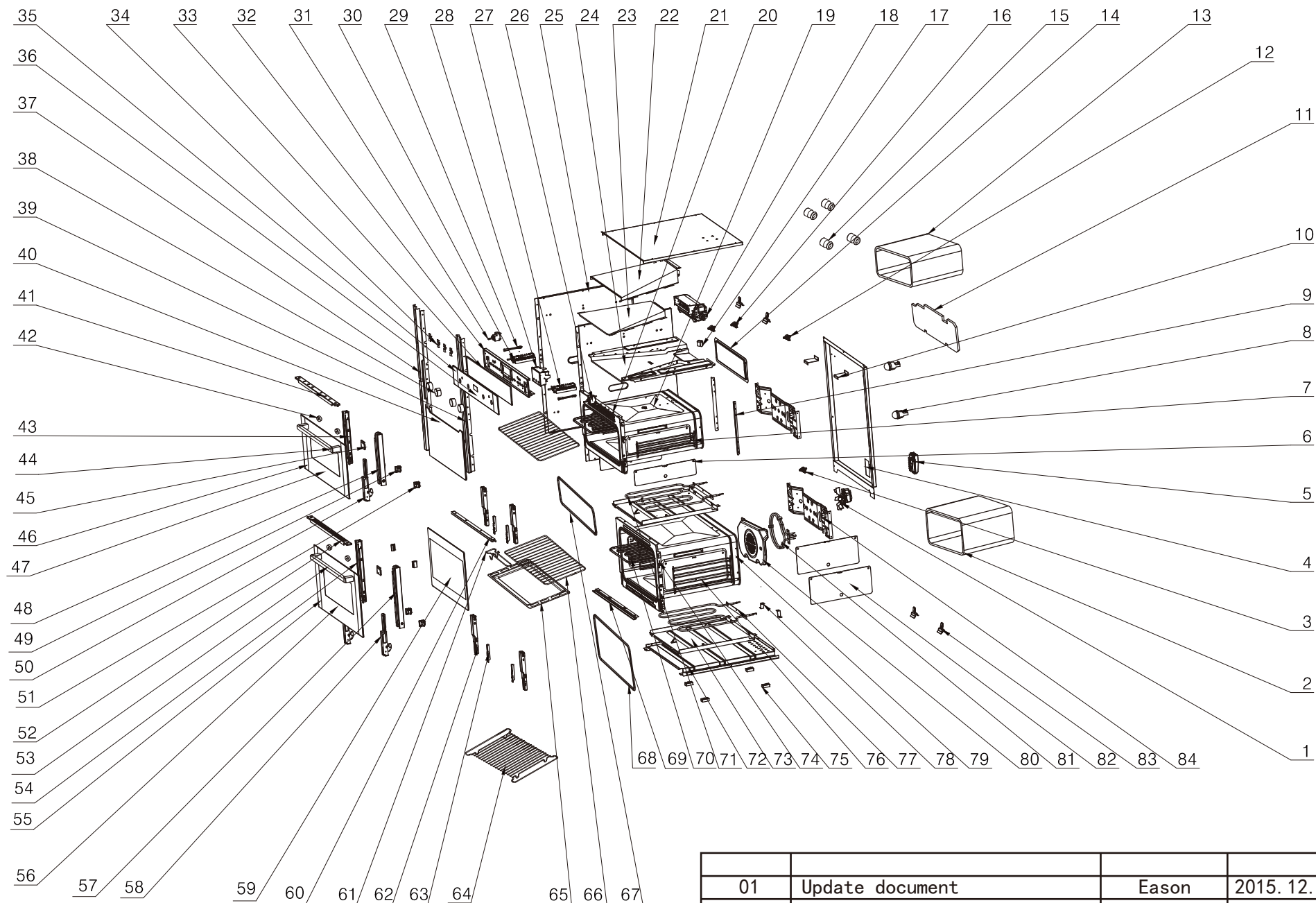
Double oven:AMF90VSS

Version:01

Date:2015-12-03

Product reference code:AMF90VSS

AMF90VSS Exploded drawing



01	Update document	Eason	2015. 12. 03
00	New document	Eason	2015. 6. 12
Index	Modify description	Modified by	Date

AMF90VSS parts list

No.	part code	Part description	Qty	Remark	chinese description
1	33315002	grill fan assembly	1		循环风机组件-(划一型号): HY6020V240H
2	33120002	heat preservation fibre	1		内胆圈保温纤维-1(16KG)
3	36154001	Thermostat (110℃)	1	From June 2015 to start using	温控器 SF1-068
	33311013	overheat protector (290℃)	1	From June 2015 to stop using	
4	33030020	back cover board	1		外壳后盖板-AD-K25(B)-02
5	33305016	terminal box	1		接线盒-AD-K25(A)-22
6	33039015	side rack panel	2		导轨支架垫板-AD-K25(B)-06
7	33140011	side rack	2		左右导轨支架-AD-K25(B)-12
8	33302002	lamp	2		灯头组件
9	33027012	connect board for top and bottom cavity	2		上下内胆连接板-AD-K25(A)-11
10	33027014	fixing panel for exhausting pipe base board	2		排烟道底板固定板-AD-K25(A)-13
11	33121002	heat preservation fibre	1		内胆底盖保温纤维
12	33308027	over heat protector100℃	1	From June 2015 to start using	过热保护器-100℃
	33311013	overheat protector (290℃)	1	From June 2015 to stop using	
13	33120002	heat preservation fibre	1		内胆圈保温纤维-1(16KG)
14	33001037	back catalytic line	1		背部易洁板-AD-K25(B)-07
15	33141002	guide rail bracket fixing axis	4		导轨支架固定轴-900*480烤箱
16	33310003	heat dissipation thermostat	2		散热温控器
17	33215013	exhausting pipe	1		排烟筒-AD-K25(B)-05
18	33313030	cooling fan assembly	1		散热风机组件(双排气) -AD-K25(A)-50
19	33058060	top cavity assembly	1		内胆组件(上) -AD-K25(B)-20-00
20	33018113	cavity panel	1		内胆面板(上)-AD-K25(B)-20-01
21	33031014	top cover plate	1		外壳上盖板-AD-K25(A)-01
22	33028004	exhausting pipe top cover board	1		排烟道上盖板-自洁烤箱专用
23	33026004	exhausting pipe middle cover board	1		排烟道中盖板-自洁烤箱专用
24	33027002	exhausting pipe base board	1		排烟道底板-自洁烤箱专用
25	33033016	side plate (left&right)	2		外壳左右侧板-AD-K25(B)-01
26	33311007	temperature adjuster	1		温控开关-900*480烤箱专用
27	33301034	function switch	1		档位开关
28	33300011	sensor touch timer (3 button)	1		三键触摸定时器-红色(触摸)
29	33312001	indicator light	2		指示灯
30	33301035	function switch	1		档位开关
31	33311018	temperature adjuster	1		温控开关-K25(A)-21
32	33018115	fixing panel for switch	1		开关面板固定板-AD-K25(A)-17
33	91034002	single adhesive tape	1		单面胶
34	33006001	connect board sw itch	4		开关面板连接板
35	33007165	decorate board sw itch	2		开关面板装饰板-英国CATA
36	33101463	control panel assembly	1		开关面板(4功能-5功能)-三键触摸-AD-K25(B)
37	33014088	left bracket for out cover plate	1		外壳左支架-AD-K25(B)-03
38	32244031	knob.21	4		21号旋钮
39	33014089	left bracket for out cover plate	1		外壳右支架-AD-K25(B)-04
40	33103023	inner glass(top door)	1		内玻璃-上(镀膜) -AD-K25(B)-10-02
41	33014087	door frame top bracket	1		门上支架(前面开孔) -AD-K25(A)-10-01
42	33214005	handle fixing assem	4		拉手固定套-PN-K14-60-09
43	33014080	door frame left bracket	1		门框左支架-AD-K25(B)-10-04
44	33190007	hanld H1	1		1号拉手
45	33006012	fixing board for handle	2		拉手固定板-PN-K13-20-07(黑色亮光喷塑后)
46	33015283	decorate board for door panel	2		门面板装饰板(上) -AD-K25(B)
47	33102370	door panel	1		门面板-AD-K25(B)-10-01
48	33014079	door frame right bracket	1		门框右支架-AD-K25(B)-10-05
49	33014049	fixing panel for inner glass	2		内玻璃左下固定块-PN-K15(A)-20-08
50	33180018	hinge 12	2		铰链组件-12号铰链
51	33014050	fixing panel for inner glass	2		内玻璃右下固定块-PN-K15(A)-20-09
52	33014043	top bracket for oven door	1		门上支架-PN-K15(A)-20-01
53	33190007	hanld H1	1		1号拉手
54	33014082	door frame left bracket	1		门框左支架-PN-K25(A)-10-03
55	33015282	decorate board for door panel	2		门面板装饰板-英国CATA(高465)
56	33102066	door panel	1		门面板-418-老门配418的拉手
57	33014081	door frame right bracket	1		门框右支架-PN-K25(A)-10-04
58	33180016	hinge 16 assembly	2		铰链组件-16号铰链
59	33103031	inner glass	1		内玻璃-下(镀膜)-AD-K25(A)-20-01
60	33027015	cavity panel connector	1		内胆面板连接板(前) -AD-K25(A)-09
61	33172001	handle for rack	1		搁架抓手
62	33024006	side bracket for cavity(left&right)	4		内胆左右支架-AD-K25(A)-05
63	33005014	fixing board for hinge	4		铰链固定板-AD-K25(A)-06
64	33170003	Tray-shallow	1		烤盘架(浅)
65	33224003	baking tray	2		油脂收集盘(K1-08)-新工艺
66	33170001	grill rack	2		搁架
67	33803013	door seal assembly	1		门封条组件K25(B)
68	33803002	door seal assembly	1		门封条组件-K1(A)
69	33027016	bottom support for cavity panel	1		内胆面板下支撑-AD-K25(A)-12
70	33303006	top heating element	2		顶层电热管
71	33303039	bottom heating element	1		底层电热管-PN-K14-08
72	33029015	bottom cover plate	1		外壳底板-AD-K25(A)-03
73	33003002	fixing board for bottom heating element	2		底层电热管固定板(K1)
74	33018111	cavity panel	1		内胆面板(下)-AD-K25(A)-40-01
75	33237030	the support for bottom cover plate	4		底板支撑块-PN-K24-08
76	33140001	side rack	2		导轨支架
77	33303002	bottom heating element	1		底层电热管
78	33237031	bottom cover plate	2		外壳底板加强板-AD-K25(A)-36
79	33058002	cavity ring assem	1		内胆圈组件(K2)
80	33001002	the cover plate for back heating element	1		背部电热管挡板
81	33303004	back electric heat pipe	1	From November 2015 to stop using	
	33303027	rear heeting element	1	From November 2015 to start using	背部电热管
82	33039001	side rack panel	2		导轨支架垫板
83	33035001	thermostat sw itch sensor fixer	4		温控开关探头固定夹
84	33016001	back bracket for cavity	2		内胆后支架