

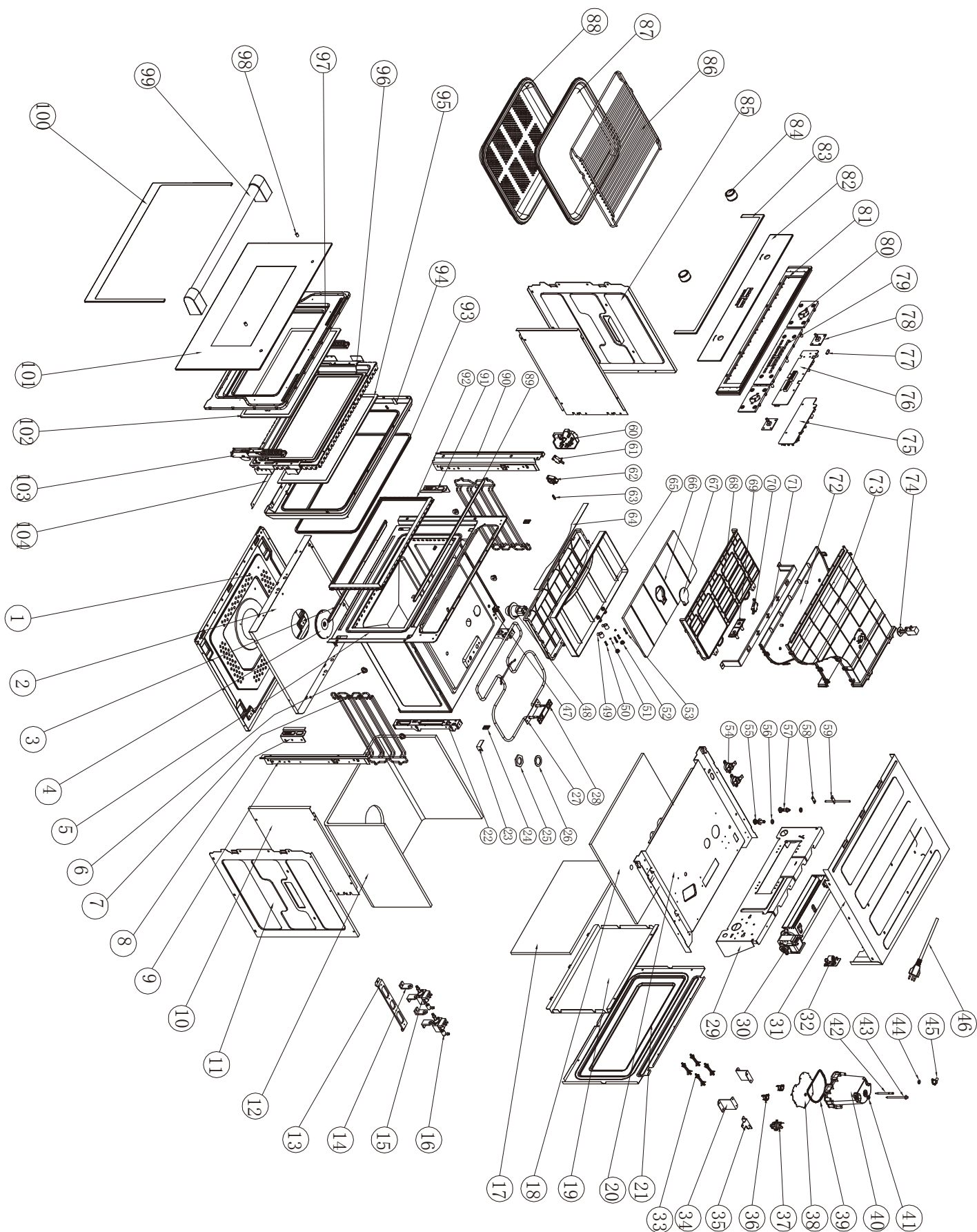


Oven:AMSG35SS

Version:00

Date:2014-05-23

AMSG35SS Exploded drawing



00	New document	Eason	2014. 5. 23
Index	Modify description	Modified by	Date

AMSG35SS parts list

NO.	Part code	part name	qty
104	36240001	door sealing gasloet	1
103	34312001	hinge	2
102	34303002	door glass (mid)	1
101	34301004	door glass (outside)	1
100	34040001	door glass decorative piece	1
99	33190007	handle no.1	1
98	34203001	handle washer	2
97	34202001	door bracket	1
96	34028001	door body	1
95	36043001	door glass (inner)	1
94	36042001	doors seal	1
93	34115001	door sealing gasloet	1
92	36232001	Door seal	1
91	34007001	left hinge bracket	1
90	34010002	left strengthen plate of front plate	1
89	34014002	op strengthen plate of front plate	1
88	36019001	perforated container	1
87	36020001	non-perforated container	1
86	36306001	rack	1
85	34023001	outer left side plate	1
84	32244036	knob	2
83	36039003	control plate decorative piece	1
82	34304016	glass of control panel	1
81	36206001	panel bracket	1
80	36210004	switch bracket	2
79	36207003	display bracket	1
78	36150001	encoder	2
77	36246001	pressure meter joint	1
76	36208006	display PCB	1
75	36209001	power PCB	1
74	36164001	wax motor type thermal actuators	1
73	36222001	lid of mind groove	1
72	36221001	base of mind groove	1
71	36040001	bracket of wind groove	1
70	36158001	water tank switch	1
69	36220001	water tank bracket	1
68	36214001	water tank bracket	2
67	36219001	Door of water tank	1
66	36218001	lid of water tank	1
65	36215001	water tank base	1
64	36007001	Water tank seat decoration	1
63	34319001	interlock Sping	1
62	34205001	interlock lever	1
61	33301013	Door switch	1
60	34204001	left interlock bracket	1
59	33323003	sensor	1
58	36133001	sensor resilient seal	1
57	36120001	exhaust steel tube 1	1
56	36154001	thermostat T110	2
55	36122001	resilient seal of steel tube	2
54	36121001	exhaust steel tube 2	1
53	36217001	mandril	2
52	36118001	resilient seal of water tank	2
51	36116001	resilient seal	2
50	36117001	water tank spring	2
49	36216001	sucker	2
48	36163001	lamp	1

NO.	Part code	part name	qty
47	36307001	pothook	1
46	34163001	power cord	1
45	36123001	exhaust pipe	1
44	36114001	resilient seal of exhaust pipe	1
43	36155001	sensor of boiler	1
42	36156001	measure stick of water level	1
41	36112001	sleeve	2
40	36213001	cover of boiler	1
39	36113001	resilient seal of boiler	1
38	36036003	lid of boiler	1
37	36166001	Flowmeter	1
36	36154004	thermostat	2
35	36245001	Flowmeter supporting	1
34	36037001	supporting of boiler	2
33	33321003	Bracket	4
32	36140001	Filter plate	1
31	34021001	outer top cover	1
30	36242001	heat dissipation fan motor	1
29	36017001	back bracket	1
28	36229001	heater resilient seal	1
27	36159001	heater of top	1
26	36119001	resilient seal of big nut	1
25	36126001	big nut	1
24	34209001	interlock decorative ring	2
23	36236001	Decotation ring fixing piece	1
22	34016001	back backstop	2
21	34020001	Outer Back plate	1
20	36018001	top bracket	1
19	36001001	back Heat insulation plate	1
18	36103001	top heat insulation cotton	1
17	36101001	back heat insulation fiber	1
16	36105001	pump tie-in	2
15	36162001	electromagnetism water pump	2
14	36106001	water pump Bracket	4
13	36231001	Water pump fixing board	1
12	36104001	U plate insulation fiber	1
11	34022001	Outer right side plate	1
10	36005001	Side Heat insulation plate	2
9	34012002	right strengthen plate of front plate	1
8	34008001	right hinge bracket	1
7	36038001	Furnace chamber supporting	2
6	36125001	screw of bracket	4
5	36404001	furnace pipe subassembly	1
4	36165001	bottom heater tray	1
3	36039001	water tray	1
2	36003001	bottom heat insulation plate	1
1	34019001	bottom plate	1

