



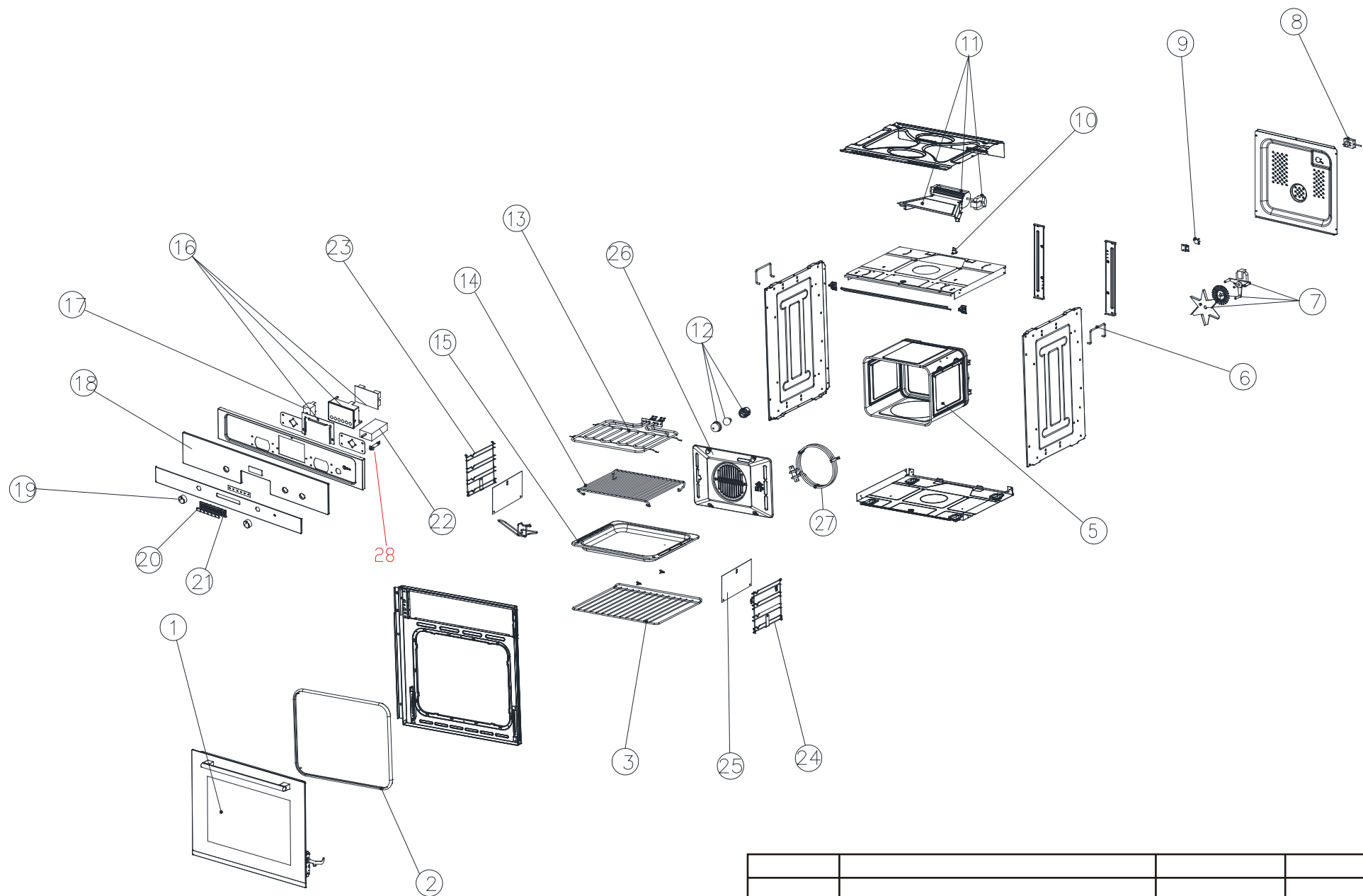
Oven:CLMF2BK-C

Version:05

Date:2014-09-23

Product reference code: 29016235

CLMF2BK-C Exploded drawing



05	add to NO. 28	Eason	2014. 9. 23
Index	Modify description	Modified by	Date

CLMF2BK-C parts list

S/N	REF	supplier code NO.	DESCRIPTION	QTY
1	25106480	GH-CM760-00-03 (丝印Cooke &	complete door-oven-CLMF2BK-C(Cooke & Lewis)	1
2	60500110	ME607I/B-00-08	rubber ring -oven-ME 611 DI	1
3	20103122	GH-B600-00-25	grill-oven-ME 611DI	1
5	55000430	GH-B600-00-22-01	internal casing-oven-ME 608 I/A	1
6	62901030	GH-B600-00-12	lateral handle-oven-ME611DI	2
7	25102900	ME607I/B-00-06	rear fan asm.-oven-ME607I/B	1
		ME607I/B-00-09		
		GH-B600-00-35		
8	69401545	GH-B600-00-44	power sam.-oven-MDP 608	1
9	20102959	KSD020-1A	thermostat(145°C)-oven-ME611DI	1
10	20102958	KSD020-1	thermostat(80°C)-oven-ME611DI	1
11	25102905	ME607I/B-00-05	cooling fan+motor-oven-décor 900 tcs	1
		GH-B600-00-07		
		GH-B600-00-07-04		
12	25101680	GH-B600-00-41	Lamp asm.-oven-MDP608	1
		GH-B600-00-42		
		GH-B600-00-43		
		XK7		
13	20103124	GH-BQ611HC/B-30-0	upper heating element-oven-ME611DI	1
14	45400070	GH-B600-00-24	tray grill-oven-A2 Multi 2	1
15	20103123	GH-B600-00-26	tray-oven-ME611DI	1
16	25101460	GH-B600-00-16-01	PCB ass'y-oven-ME 611DI	1
		GH-N800I/A-00-09		
		GH-B600-00-16-02B		
17	25105140	GH-BQ611MC/B-30-0	WYF280AC temperature control-oven-A3 Multi	1
18	25105115	GH-CD760-30-01	switch panel -oven-A2 Multi 2	1
19	25105605	GH-EFM60BKG-00-04	knob ass'y C03i-oven-EFM60BKG	2
20	60702165	GH-CD760-10-02	press key-oven-CD760	6
21	60702170	GH-CD760-10-01	press panel-oven-CD760	1
22	25101610	GH-BQ611MC/A-30-0	function switch -oven-ME 611 DI	1
23	25101605	GH-N800I/A-00-05B	Left Lateral Grille-OVEN-ME 611 DI DURALUM/A	1
24	25103845	GH-N800I/A-00-05A	Right lateral Grille-oven-ME 611 DL/A	1
25	69409905		Catalitic Panel-oven-CLMF2BK-C	2
26	62901665		later fan cover(also as a Catalitic Panel)-oven-CLMF2B	1
27	25103070	GH-BQ611HC/B-30-0	Rear Henting Elements(short)-OVEN-EF60SS2	1
28	20103115		yellow pilot light-oven-ME611DI	1