



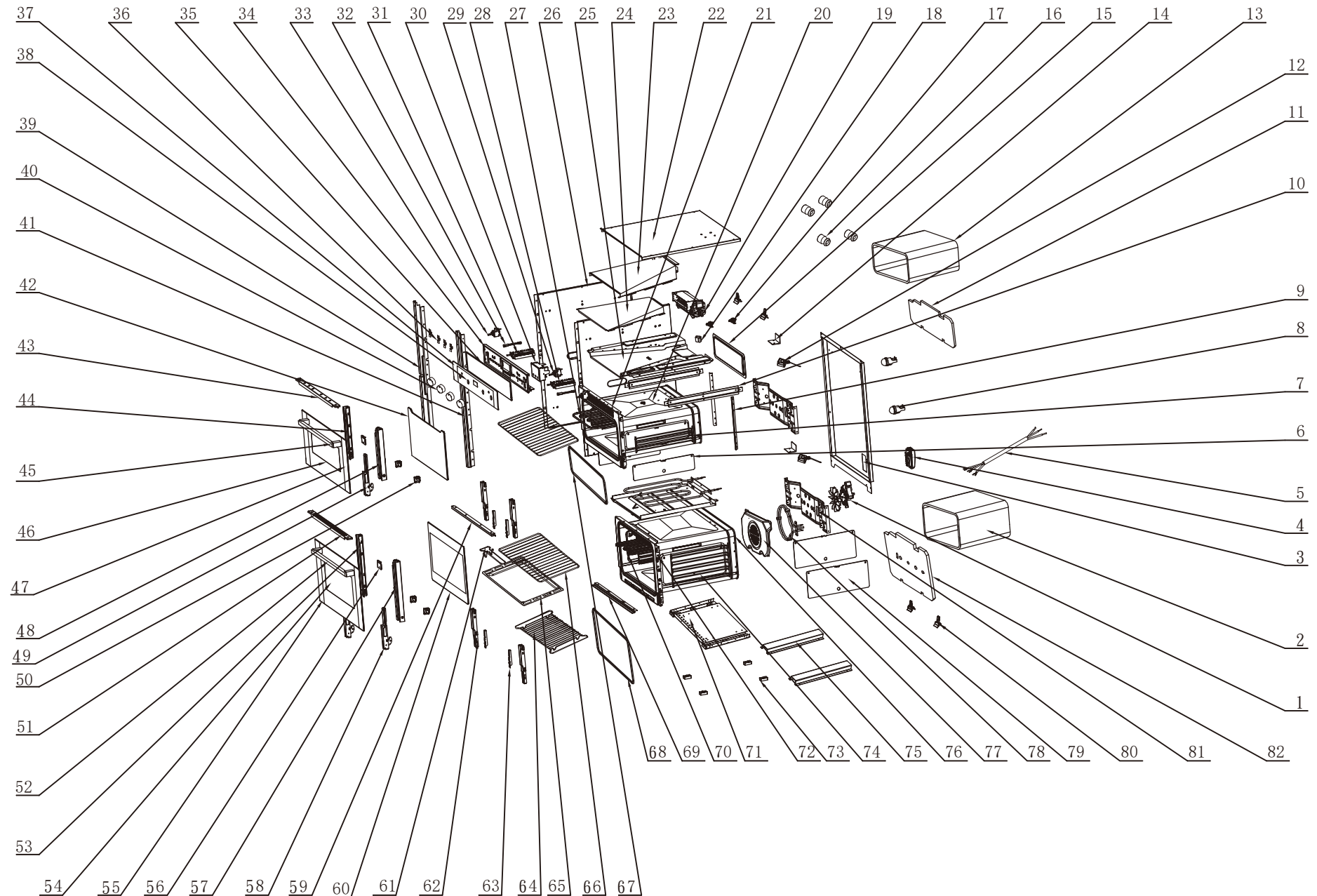
Double Oven:KC290DTSS

Version:03

Date:2015-11-23

Product reference code: 41KC290DTSS

# KC290DTSS Exploded drawing



03	update file	Eason	2015. 11. 23
02	update No.48 part Description	Eason	2015. 11. 11
01	change the design and modify some codes	Paul	2013. 10. 21
Index	Modify description	Modified by	Date

# KC290DTSS parts list

No.	Part code	Part description	Qty	Remark
1	33315002	grill fan assembly	1	
2	33120002	heat preservation fibre	1	
3	33030020	back cover board	1	
4	33005016	terminal box	1	
5	32307016	power cord-European style	1	
6	33039015	side rack panel	2	
7	33140011	side rack	2	
8	33302002	lamp	2	
9	33027012	connect board for top and bottom cavity	2	
10	33027014	fixing panel for exhausting pipe base board	2	
11	33121002	heat preservation fibre	1	
12	33311013	overheat protector (290℃)	1	From June 2015 to stop using
	33308027	up overheat protector (100C°)	1	From June 2015 to start using
	36154001	below overheat protector (110℃)	1	
13	33120002	heat preservation fibre	1	
14	33004010	fixing bracket for overheat protector	2	
15	33001037	back catalytic line	1	
16	33141002	guide rail bracket fixing axis	4	
17	33310003	heat dissipation thermostat	2	
18	33215013	exhausting pipe	1	
19	33313020	cooling fan assembly	1	
20	33058060	top cavity assembly	1	
21	33018113	cavity panel	1	
22	33031014	top cover plate	1	
23	33028004	exhausting pipe top cover board	1	
24	33026004	exhausting pipe middle cover board	1	
25	33027002	exhausting pipe base board	1	
26	33033016	side plate (left&right)	2	
27	33303006	top heating element	1	
28	33301035	function switch	1	
29	33311018	temperature adjuster	1	
30	33300011	sensor touch timer ( 3 button)	1	
31	33301034	function switch	1	
32	33312001	indicator light	2	
33	33311008	temperature adjuster	1	
34	33018115	fixing panel for switch	1	
35	90134002	single adhesive tape	1	
36	33006001	connect board switch	4	
37	33007172	S.S trim for control panel	1	
38	33101381	control panel assembly	1	
39	33014088	right bracket for out cover plate	1	
40	32244031	knob.21	4	
41	33014089	left bracket for out cover plate	1	
42	33103023	inner glass(top door)	1	
43	33014087	door frame top bracket	1	
44	33014080	door frame left bracket	1	
45	33190010	hanld H7	1	
46	33102370	door panel	1	
47	33015288	S.S trim for door panel	2	
48	33014079	door frame right bracket	1	
49	33180018	hinge subassembly-no.12 # hinge	2	
50	33014049	fixing panel for inner glass	2	
	33014050	fixing panel for inner glass	2	
51	33014043	top bracket for oven door	1	
52	33190010	hanld H7	1	
53	33014082	door frame left bracket	1	
54	33102464	door panel	1	
55	33015287	S.S trim for door panel	2	
56	33006012	fixing board for handle	2	
57	33014081	door frame right bracket	1	
58	33180016	hinge 3 assembly	2	
59	33027015	cavity panel connector	1	
60	33103031	inner glass	1	
61	33172001	handle for rack	2	
62	33024006	side bracket for cavity(left&right)	2	
63	33005014	fixing board for hinge	2	
64	33170003	shallow baking tray	1	
65	33224003	baking tray	1	
66	33170001	grill rack	2	
67	33803013	door seal assembly	1	
68	33803002	door seal assembly	1	
69	33027016	bottom support for cavity panel	2	
70	33303009	top heating element	1	
71	33029015	bottom cover plate	1	
72	33018111	cavity panel	1	
73	33237030	the support for bottom cover plate	4	
74	33140001	side rack	2	
75	33237031	the bottom support for cavity	2	
76	33058002	cavity assembly	1	
77	33001002	the cover plate for back heating element	1	
78	33303004	back electric heat pipe	1	From November 2015 to stop using
	33303027	back electric heat pipe	1	From November 2015 to start using
79	33039001	side rack panel	2	
80	33035001	thermostat switch sensor fixer	10	
81	33016001	back bracket for cavity	2	
82	33121002	heat preservation fibre	1	