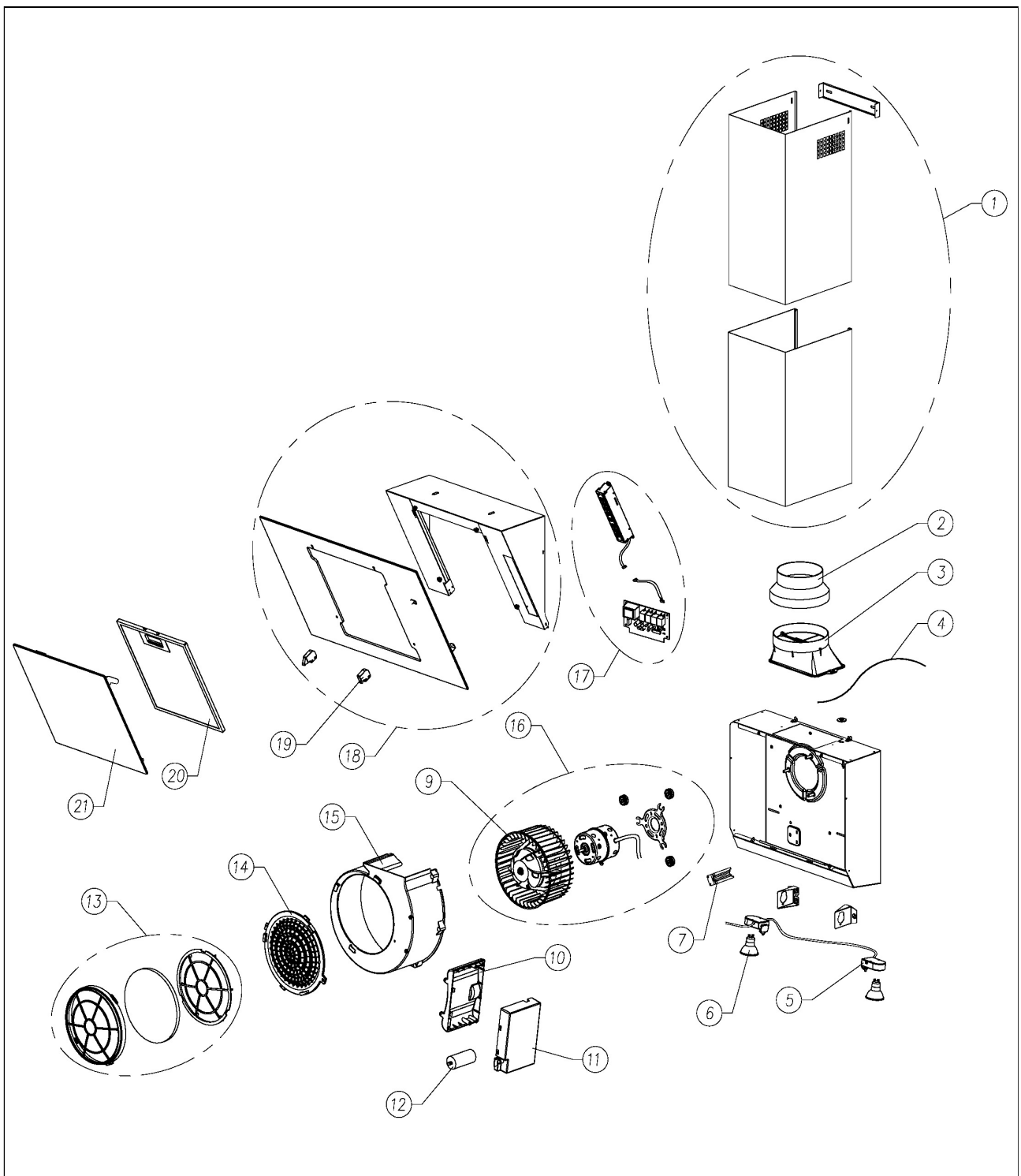


ALPHA6-7-9BK_6-7-9WHK Exploded drawing

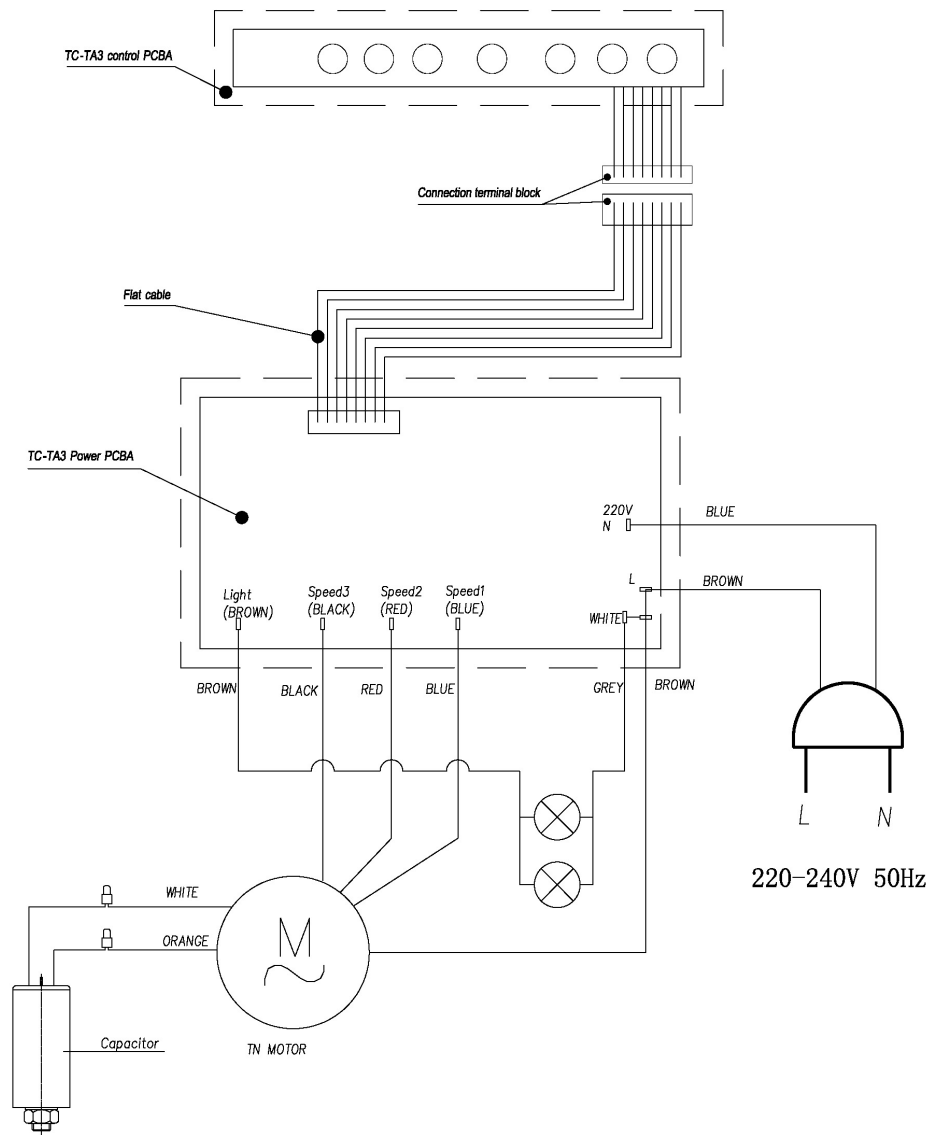




00	New document	Sam Yan	07-09-12
Index	Modify description	Modified by	Date

ALPHA6-7-9BK_6-7-9WHK Part list

Nº	REF.	NAME OF SPARE (NAME OF PIECE/NAME OF PRODUCT)	QTY.	REMARKS
1	15103101	Inox Tubes-hood-TN	1	
2	02893001	150 to 120 Outlet Adapter	1	Same 60700795
3	60704225	Outlet tube-hood-TN	1	
4	60100015	UK Supply cord 2M w/o plug	1	
5	15107001	GU10 halogen Lampholder-Hood-GAMMA VL3	1	
6	69000445	Halogen 230v. 50w. GU10	2	
7	62904070	Motor cable clamp-hood-TN	1	
9	60704230	Turbine-Hood-TN	1	
10	60704235	Connection box cover-Hood-TN	1	
11	60704240	Connection box-Hood-TN	1	
12	62000060	Capacitor 4µF TA-P motor	1	
13	02859396	Charcoal filter-hood-TN	1	
14	60704245	Air inlet cover-hood-TN	1	
15	60704250	Wind chamber-hood-TN	1	
16	15104017	TN motor (230V/50Hz 140W) group-hood	1	
17	63900705	TC TA3/D switch group with control box-hood-Fusion	1	
18	15109077	60cm Black external glass group-hood-TN CATA	1	ALPHA_BK only
	15109078	70cm Black external glass group-hood-TN CATA	1	
	15109079	90cm Black external glass group-hood-TN CATA	1	
	15109082	60cm White external glass group-hood-TN CATA	1	ALPHA_WHK only
	25100945	70cm White external glass group-hood-TN CATA		
	15109083	90cm White external glass group-hood-TN CATA	1	
19	25100830	Press fastener-hood-TN	2	
20	02800905	Metal filter with unbranded plastic handle-hood-omega 600	1	
21	15109080	Black internal glass group-hood-TN CATA	1	ALPHA_BK only
	15109081	White internal glass group-hood-TN CATA	1	ALPHA_WHK only

Index	Modify Description	Modified by:	Date	Mod:



<div>TAS</div>			Name:	Date:	Material:	Model:									
		Drawn:	Sam Yan	25-04-12	Weight:										
		Checked:			Colour:	N°Pieces	Reference:								
		Page:			Destiny:										
<div><div><div></div><div></div></div><div>DIM without tolerance</div><table><tr><td>.....6</td><td>>6...30</td><td>>30...120</td><td>>...120</td></tr><tr><td>±0.1</td><td>±0.2</td><td>±0.3</td><td>±0.5</td></tr></table><div>Dimensions in mm</div></div>	6	>6...30	>30...120	>...120	±0.1	±0.2	±0.3	±0.5	Scale:	Denomination:				
.....6	>6...30	>30...120	>...120												
±0.1	±0.2	±0.3	±0.5												
<div>TN (TC TA3/D) hood connection diagram</div>															

TN (TC TA3/D) hood connection diagram