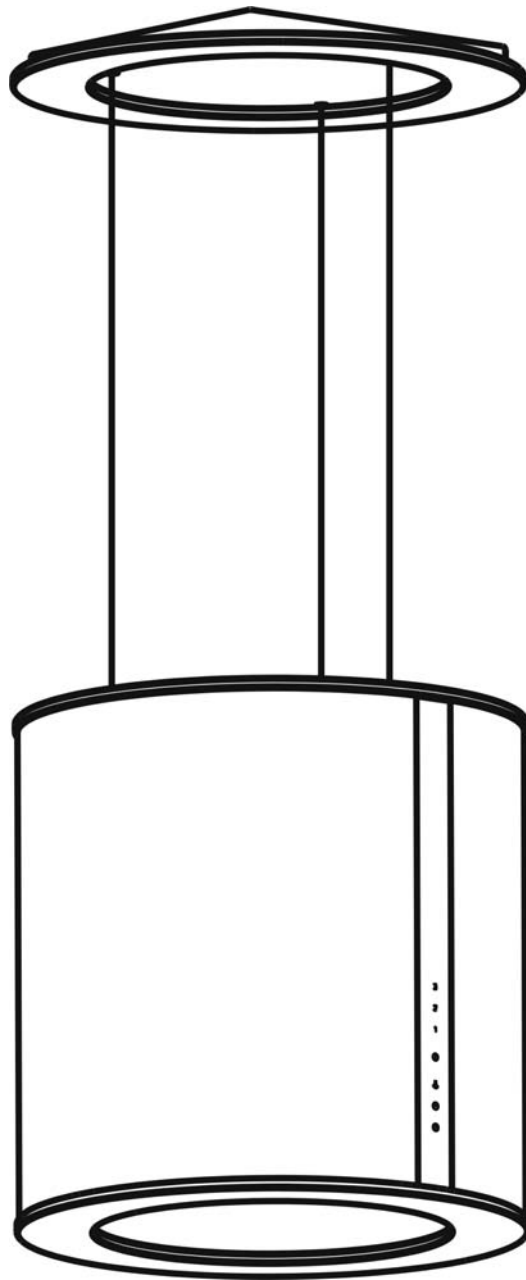


INSTALLATION AND USER'S MANUAL COOKER HOOD

CHAND



After sales n°: 08448001128

uksupport@cnagroup.hk

TABLE OF CONTENTS

1. Introduction	3
2. Safety precaution	3-4
3. Intended use	5
4. Parts supplied	6
5. Installation	7-11
6. Operation	12
7. Maintenance	13
8. Troubleshooting	14
9. Technical data	14
10. Environmental protection	14

1. INTRODUCTION

Thank you for choosing this cooker hood.

This installation and user's manual is designed to provide you with all required instructions related to the installation, use and maintenance of the appliance. In order to operate the appliance correctly and safely, please read this installation and user's manual carefully before installation and usage. Keep this installation and user's manual for future use. Should this appliance be passed on to a third party, then this installation and user's manual must be included.

No liability will be accepted for damage resulting from improper use or non-compliance with these instructions.

2. SAFETY PRECAUTION



Important! Always switch off the electricity supply at the mains during installation and maintenance such as for light bulb replacement

General

The cooker hood is suitable for domestic use only.

Children

- Please dispose of the packaging material carefully. Packaging material can be dangerous to children. **Danger of suffocation!**

- Children should be supervised to ensure that they do not play with the appliance.

Installation

- The cooker hood must be installed in accordance with the installation instructions and all measurements must be followed.
- All installation work must be carried out by a competent person or qualified electrician.
- When installing the cooker hood, make sure that the following recommended distances between the top of cooker and the lowest part of the cooker hood are observed:
 - Gas cookers: 65cm
 - Electric cookers: 65cm
 - Coal or oil cookers: 80cm
- Do not install above a cooker with a high level grill.
- Make sure the ducting has no bends sharper than 90 degrees as this will reduce the efficiency of the cooker hood.
- Pay attention to the sharp edges inside the cooker hood during installation.

Electrical safety

- Regularly check the power cord for damage. If the supply cord is damaged, it must be replaced by the manufacturer, its service agent or similarly qualified persons in order to avoid a hazard.
- The appliance must be placed in such a way, that the power supply is accessible at all times.
- Before connecting the appliance to the power supply, check that the power supply voltage and current rating corresponds with the power supply details shown on the appliance rating label.
- Never use a damaged appliance! Disconnect the appliance from the wall outlet and contact your supplier if it is damaged.
- **Danger of electric shock!** Do not attempt to repair the appliance yourself. In case of malfunction, repairs are to be conducted by qualified personnel only.

- To avoid damaging the cord, do not squeeze, bend or chafe it on sharp edges. Keep it away from hot surfaces and open flames as well.
 - Lay out the cord in such a way that no unintentional pulling or tripping over it is possible.
 - Do not open the appliance casing under any circumstances.
- Do not insert any foreign objects into the inside of the casing.
- Never use accessories which are not recommended by the manufacturer. They could pose a safety risk to the user and might damage the appliance. Only use original parts and accessories.
 - Keep the appliance away from any hot surfaces and open flames. Always operate the appliance on a level, stable, clean and dry surface. Protect the appliance against heat, dust, direct sunlight, moisture, dripping and splashing water.
 - Do not place heavy objects on top of the appliance. Do not place objects with open flames, e.g. candles, on top of or beside the appliance. Do not place objects filled with water, e.g. vases on or near the appliance.
 - This appliance is not intended for use by persons (including children) with reduced physical, sensory, or mental capabilities, or by those who lack experience and knowledge, unless they have been given supervision and instruction concerning the use of the appliance by a person responsible for their safety.

Gas safety

- Always put lids on pots and pans when cooking on a gas cooker.

Operation



Danger of fire!

- Do not flambé under the cooker hood.
- Do not leave frying pans unattended during use because overheated fats or oils might catch fire.
- Never leave naked flames under the cooker hood.
- Only fry underneath the cooker hood when you are in the kitchen.

- Do not use the cooker hood without the grease filters, or if the filters are excessively greasy!



Caution! Accessible parts may become hot when used with cooking appliances.

Exhaust operation

Danger!

- During exhaust operation, the cooker hood removes air from a room. If other fire sources that require the surrounding air for combustion are being operated in the same room, (e.g. gas, oil or coal heaters), the oxygen they require is taken away. Thus flames could be suffocated and gas could leak out or the fumes could be drawn back into the room.
- In order to guarantee a safe operation, there should be non-closable openings in doors, windows or in an air intake wall box to ensure a fresh supply of combustion air. This will prevent the combustion fumes from being drawn back into the room.
- When assessing the measures necessary, always take the entire ventilation system of the house into consideration. In case of doubt, ask your local chimney sweeper for help.
- Never secure the cooker hood to a ventilation duct, or a room or exhaust gas chimney! Do not let the air that is removed from the room be drawn into a duct where warm air is circulating. The extracted air should only be drawn outdoors through a separate ventilating duct that is only for the extractor hood.
- When in extraction mode, air in the room is being removed by the cooker hood. Please make sure that proper ventilation measures are being observed. The cooker hood removes odours from room but not steam.
- There shall be adequate ventilation of the room when the range hood is used at the same time as appliances burning gas or other fuels (not applicable to

appliances that only discharge the air back into the room).

- The air must not be discharged into a flue that is used for removing fumes from appliances burning gas or other fuels (not applicable to appliances that only discharge the air back into the room).

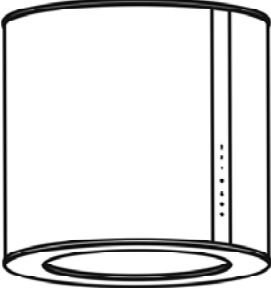
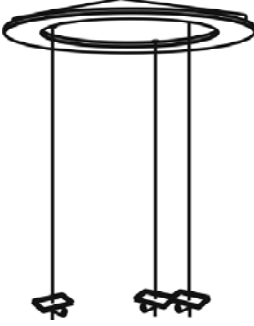
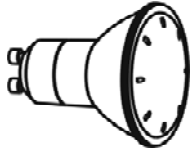
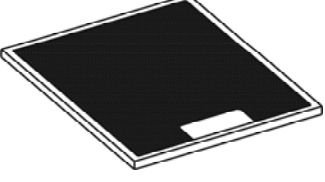
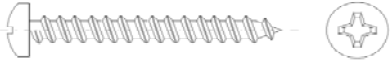

Cleaning

- There is a fire risk if cleaning is not carried out in accordance with the instructions.
- Pay attention to the sharp edges inside the cooker hood, especially during cleaning.
- Always disconnect the power supply prior to cleaning the cooker hood. If the switched fused connection unit is difficult to reach, shut off the power supply by using the corresponding circuit breaker at the distribution board.
- Keep the cooker hood clean. Fat deposits could catch on fire when exposed to high temperatures.

3. INTENDED USE

- Your cooker hood can only be operated in recirculated-air operation.
- Recirculated - air: Kitchen fumes are removed and after purification are fed back into the room through the upper air outlet openings. The purification takes place via the grease filters and the charcoal filter

4. PARTS SUPPLIED

[1]	Cooker Hood		1
[2]	Ceiling Assembly with wires		1
[3]	Luminary		3
[4]	Metal & Charcoal Filter		1
[5]	Ceiling Screw (6x70)		4
[6]	Ceiling Plug Ø10		4

5. INSTALLATION

Important! We recommend that two people carry out the installation. Pay attention to the procedure described in the assembly instructions.

Preparation

- **Attention!** In order for the cooker hood to reach optimal performance, mount it over the middle of the cooking area.
- Plan the power connection prior to installation so that a disturbing cable will not be visible afterwards.
- The following accessories are required to mount the cooker hood (not included with the delivery):
 - Power drill
 - Screwdriver
 - Water level
 - Cable detector

Electrical connection

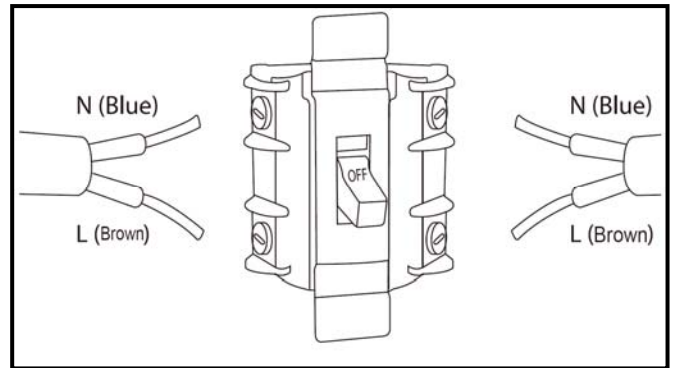
- All fittings must be installed by a qualified electrician in accordance with current IEE Wiring Regulations (BS7671) and local building regulations.

- **Important!** Always switch off the electricity supply at the mains during installation and maintenance. We recommend that the fuse is withdrawn or circuit breaker switched off at the distribution board whilst work is in progress.
- Prior to drilling holes to secure it to the ceiling, make sure that no cables or pipes will become damaged (electric, gas, water, etc.; test the areas in question with a cable detector).
- This unit is double insulated and must not be earthed. If there are any incoming earth cables, they must be joined and well insulated with good quality insulation tape. This is to ensure earth continuity throughout your property.
- Means for disconnection must be incorporated in the fixed wiring in accordance with the wiring rules. To achieve this install appropriate switched fused connection unit.

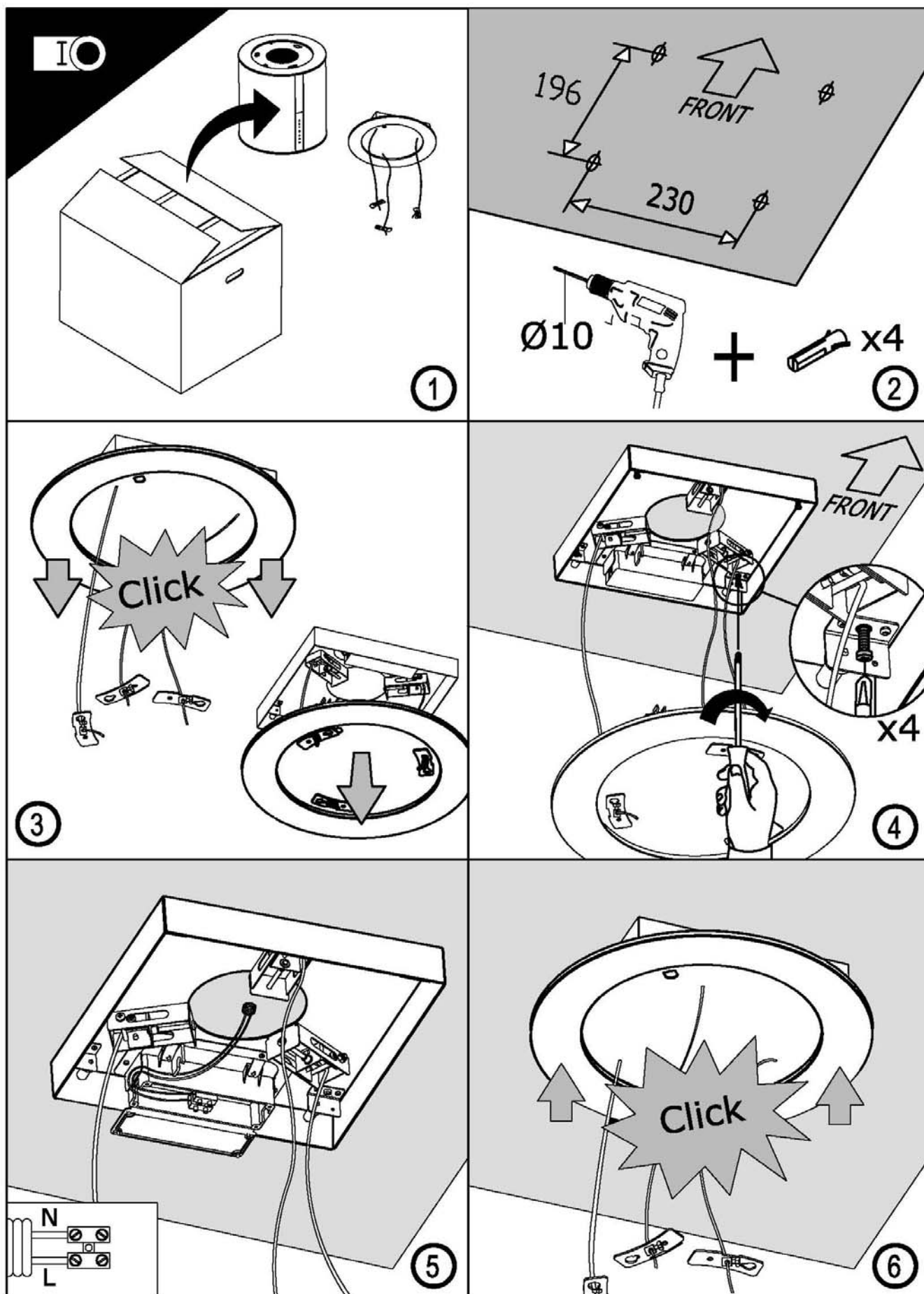
Note! A switched fused connection unit having a contact separation of at least 3mm in all poles should be connected in fixed wiring.

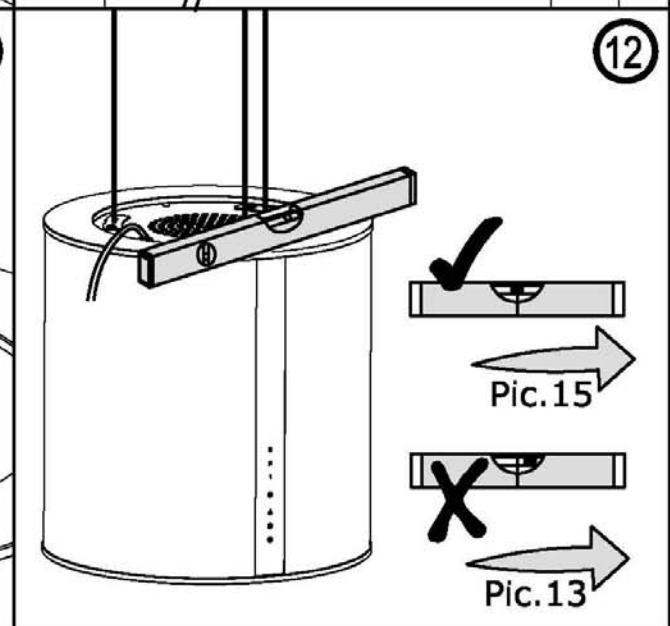
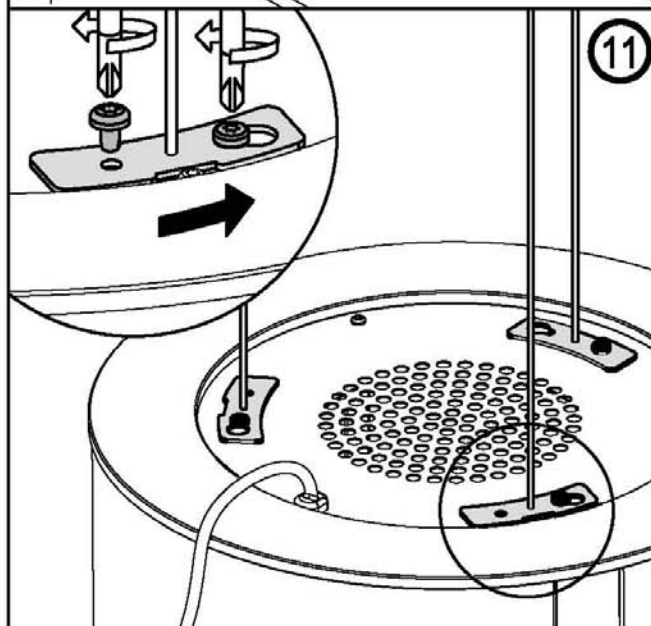
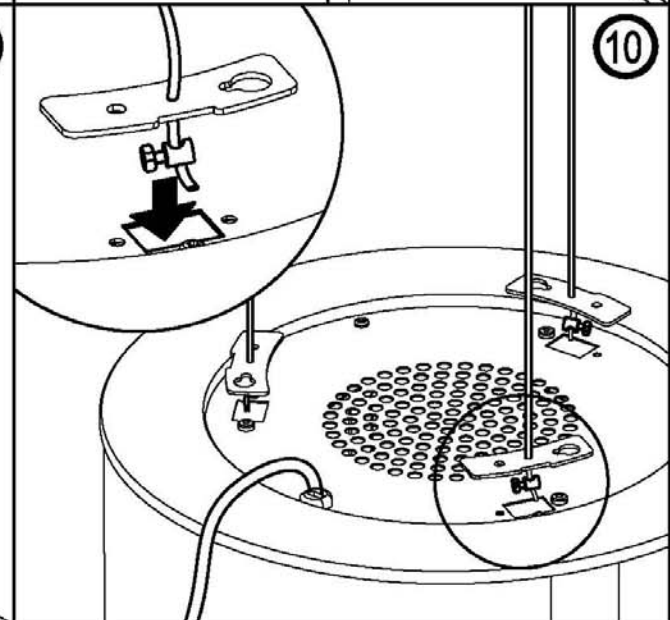
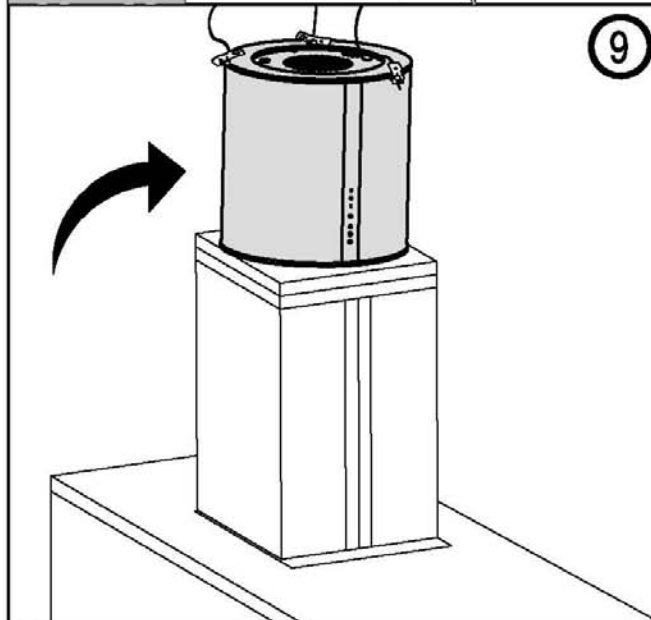
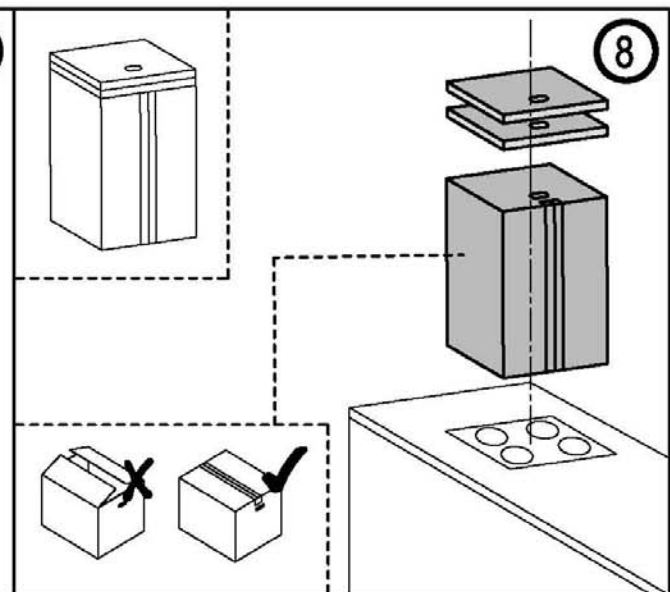
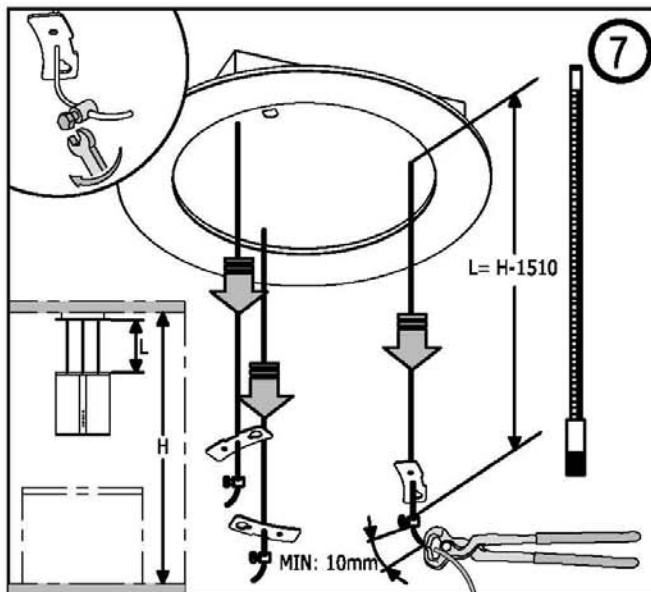
- Connect the incoming positive and neutral cables to the terminals of the switched fused connection unit (below figure).

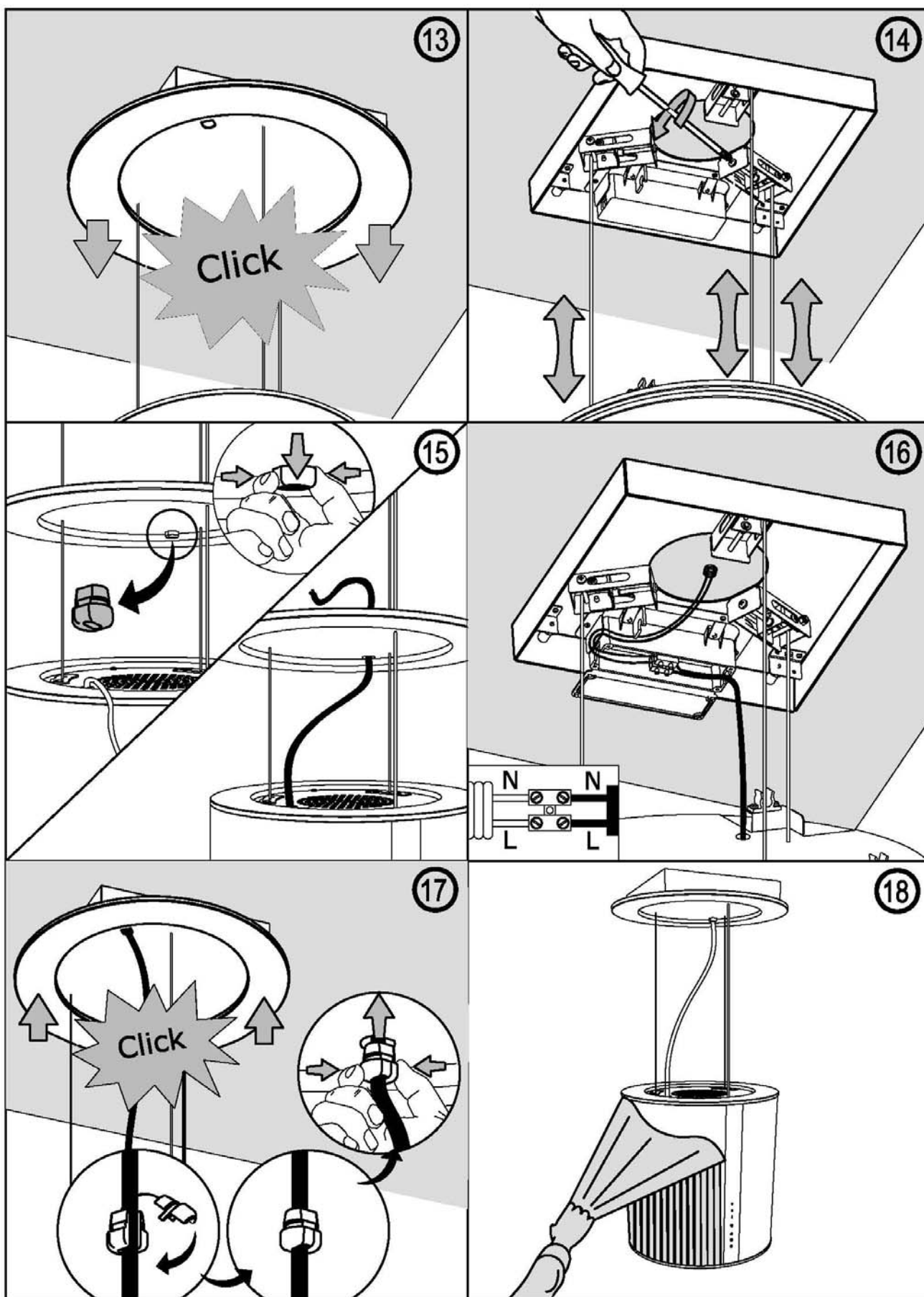
Ensure connections are tight



Fixing the appliance to the ceiling







- Using template dimensions(fig2), mark and drill 4 holes at the ceiling to hang the Cooker hood (1). Insert the wall plugs (6).
- Disassemble the glass set from the ceiling plate (fig. 3).
- Fix the ceiling plate with the screw (5) in the plugs (fig. 4).
- Connect the Main supply to the Terminal Block (fig. 5).
- Assemble the glass set to the ceiling plate (fig. 6)
- Measure the steel cables length keeping them tight and fix the holding brackets at the correct height (fig.7).
 - Use the packaging box to situate the Cooker Hood (1) on the top of the cooking surface (fig 8-9).
- Fix the holding brackets to the hood and take out the packaging box (fig. 10-11).
- Check the hood levelling (fig. 12).
- Disassemble the glass set from the ceiling plate, to level the hood using the mechanism (fig. 13-14).
- Disassemble the wiring protection from the glass set. Pass the hood supply cord through the hole, and connect to the Terminal Block in the ceiling plate (fig.15-16).
- Assemble the glass set to the ceiling plate, and assemble the wiring protection (fig. 17).
- Remove the protective film (fig. 18)

6. OPERATION

- Switch on the appliance at the switched fused connection unit. The appliance is ready for operation.

Functions

TOUCH CONTROL PANEL

This panel is located on the front part of the hood and includes:



- Filter cleaning alert indicator/switch (ref. 1). Activated regularly to alert of the need to clean filters and deactivated with a single press.



- Button for setting the timer of the motor (ref. 2). The extractor will operate for 5 minutes at the current speed and 5 minutes at each of the lower speeds until coming to a complete stop.



- Button for the light (ref. 3). Allows the light to be regulated by pressing and holding down.



- On/off button of the motor (ref. 4).

1

- Extractor fan speed - button: speed 1

2

- Extractor fan speed - button: speed 2

3

- Extractor fan speed - button: speed 3

To obtain the best results from your cooker hood it is recommended that you leave it switched on for 15 minutes after you have finished cooking.

7. MAINTENANCE

- Before cleaning, switch the appliance off and disconnect the cooker hood from power supply.
- Clean the appliance in the following intervals:

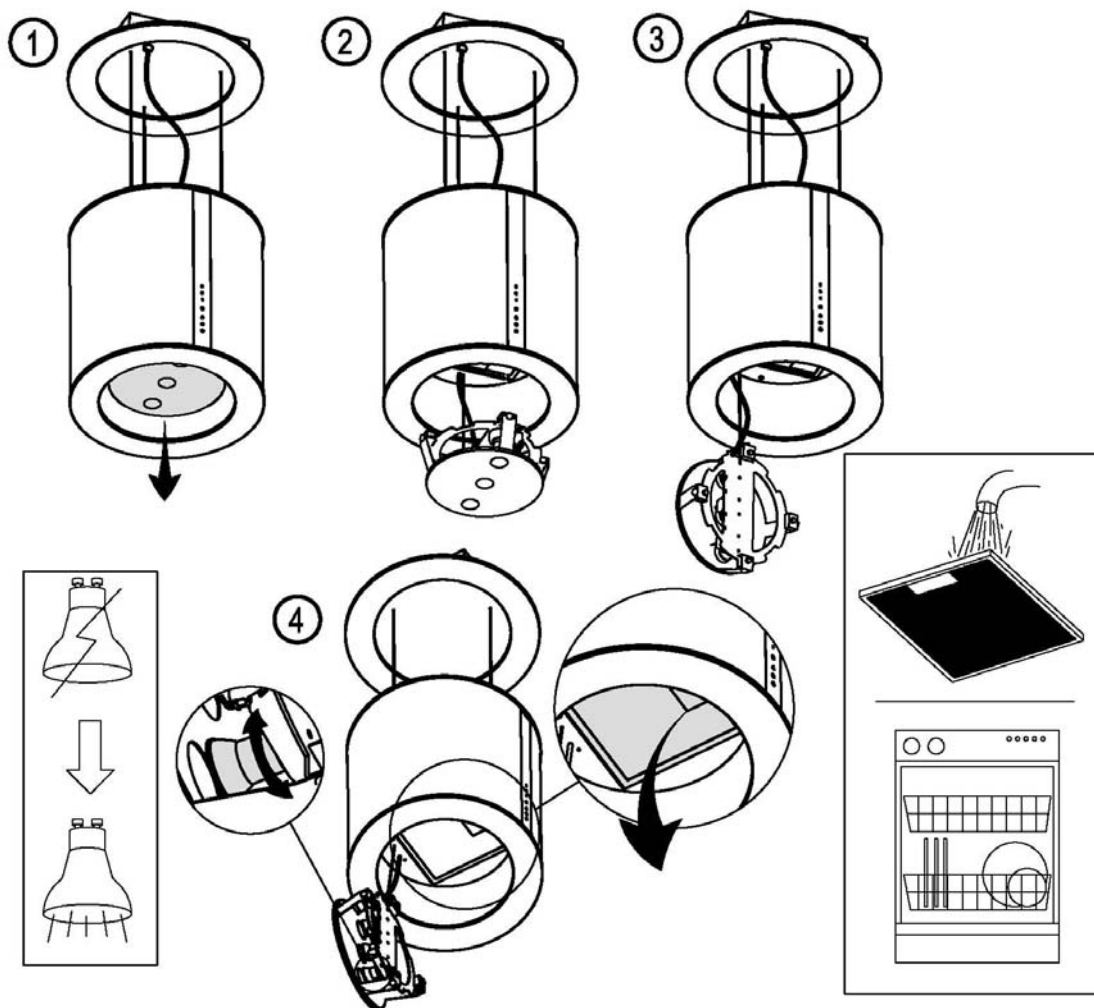


Light bulb replacement

The lighting system fitted to the hood is just a supportive light. In any case, it can not substitute for the main lighting in the kitchen.

- Switch the appliance off and disconnect the power supply.
- Screw the light bulb from the holder and replace by new light bulb of the same type, max. 35W (GU-10).

Regularly	Use a soft cloth moistened with hand-warm mildly soapy water or household cleaning detergent. Never use metal pads, chemical, abrasive material or stiff brush to clean the appliance.
Monthly	<p>Metallic Anti-grease and Charcoal filter: The filter collects grease, smoke and dust so the filter is directly affecting the efficiency of the cooker hood. If not cleaned, the grease residue (potential flammable) will saturate on the filter. Clean it with household cleaning detergent.</p> <p>Important: Clean the filter every month to prevent risk of fire.</p> <p>Follow the fig. 11 to disassemble the Filter (4)</p>



8. TROUBLESHOOTING

Fault	Cause	Solution
Excessive vibration.	The appliance is not hung properly on the brackets.	Take down the appliance and check it is properly fixed.
	The fan blade is damaged.	Switch off the appliance. Repair to be carried out by qualified service personnel only.
	The fan motor is not fixed tightly.	
Light on, but fan does not work.	The fan blade is jammed.	Switch off the appliance. Repair to be carried out by qualified service personnel only.
	The motor is damaged.	
Both light and fan do not work.	Light bulb broken.	Replace with a bulb with correct rating.
	Power connection loose.	Check power supply.
Suction performance not good.	Distance between the appliance and the cooking place too large.	Readjust the distance to: Gas cookers: 65cm Electric cookers: 40cm Coal/oil cookers: 80cm
	Metallic anti-grease filter is dirty.	Clean filters (see Maintenance chapter).

9. TECHNICAL DATA

Power supply : 220-240V~ 50Hz
Power consumption – Fan : 200W
Power consumption – Luminary : 3 x 35W Max
Power consumption – Total : 305W
Protection class : II
Light bulb : Max. 35W (GU-10)

10. ENVIRONMENTAL PROTECTION

Waste electrical products should not be disposed of with household waste. Please recycle where facilities exist. Check with your Local Authority or retailer for recycling advice.

Manufacturer's Guarantee

This appliance is covered by a full manufacturer's 24 month parts and labour guarantee and covers all parts and labour costs associated with the repair of the appliance in a domestic environment. We will repair any defect that arises due to faulty materials or workmanship and use genuine manufacturers parts.

All claims must be supported with the original receipt or other reasonable proof of purchase.

If, during the guarantee period, the appliance becomes irreparable as agreed by the engineer approved by GAA then we reserve the right, at our discretion, to exchange the defective product with a replacement appliance at GAA's sole cost. If the same product is no longer available an alternative will be offered with the same functions as the faulty item.

After an appliance has been repaired or replaced any remaining balance of the GAA guarantee will be valid and any further call outs during this prescribed period will be covered by GAA on the replacement appliance.

Should any person other than an authorized engineer modify or attempt to repair the appliance then the warranty will be invalid.

The guarantee applies to the UK mainland, Scotland, Ireland, ROI and France but is not transferrable between EU countries.

This guarantee is non-transferrable to any other person or product. The guarantee is covered by UK law and is in addition to and does not diminish your legal rights.

Exclusions to the guarantee

This guarantee does NOT cover:

Appliances that have been damaged or neglected as a result of failure to store, assemble, install, use or care of the products in accordance with the manufacturer's instructions – GAA will not accept responsibility under this guarantee if a product is damaged or becomes defective due to, misuse, neglect, wilful or accidental damage or act of god.

Normal wear and tear.

Consumable items such as carbon filters and bulbs.

Guarantee	
------------------	--

Exclusions to the guarantee (continued)

Claims arising from nondomestic use or commercial environment

Any gas appliance not fitted by a gas safe qualified installer.

If no fault is found then GAA reserves the right to charge for the call out at the going rate of £55.00 plus VAT.

In the course of the service work carried out it may be necessary to remove the built in appliance from its fitted position. If the appliance is glued, grouted or tiled in such a manner that it cannot be removed, it is the responsibility of the customer/installer to remove and reinstall the appliance to facilitate the repair.

This Guarantee does not affect your statutory rights.

The guarantee is offered by GAA Ltd, 1301-1303 Lu Plaza, 2 Wing Yip St, Kwun Tong, Kowloon, Hong Kong.

Customer Service

To arrange an in guarantee service call, please contact customer services on the following numbers.

UK and N.Ireland - ISDAL Customer Care Centre
1: 0844 8001128 E: uksupport@cnagroup.hk
www.myspareparts.co.uk

Republic of Ireland (ROI) - ISDAL Customer Care Centre
1: 1-800 535542 E: uksupport@cnagroup.hk

France - IDEAR Customer Care Centre
1: 01 58 48 02 80 E: callcenter@idepar.fr