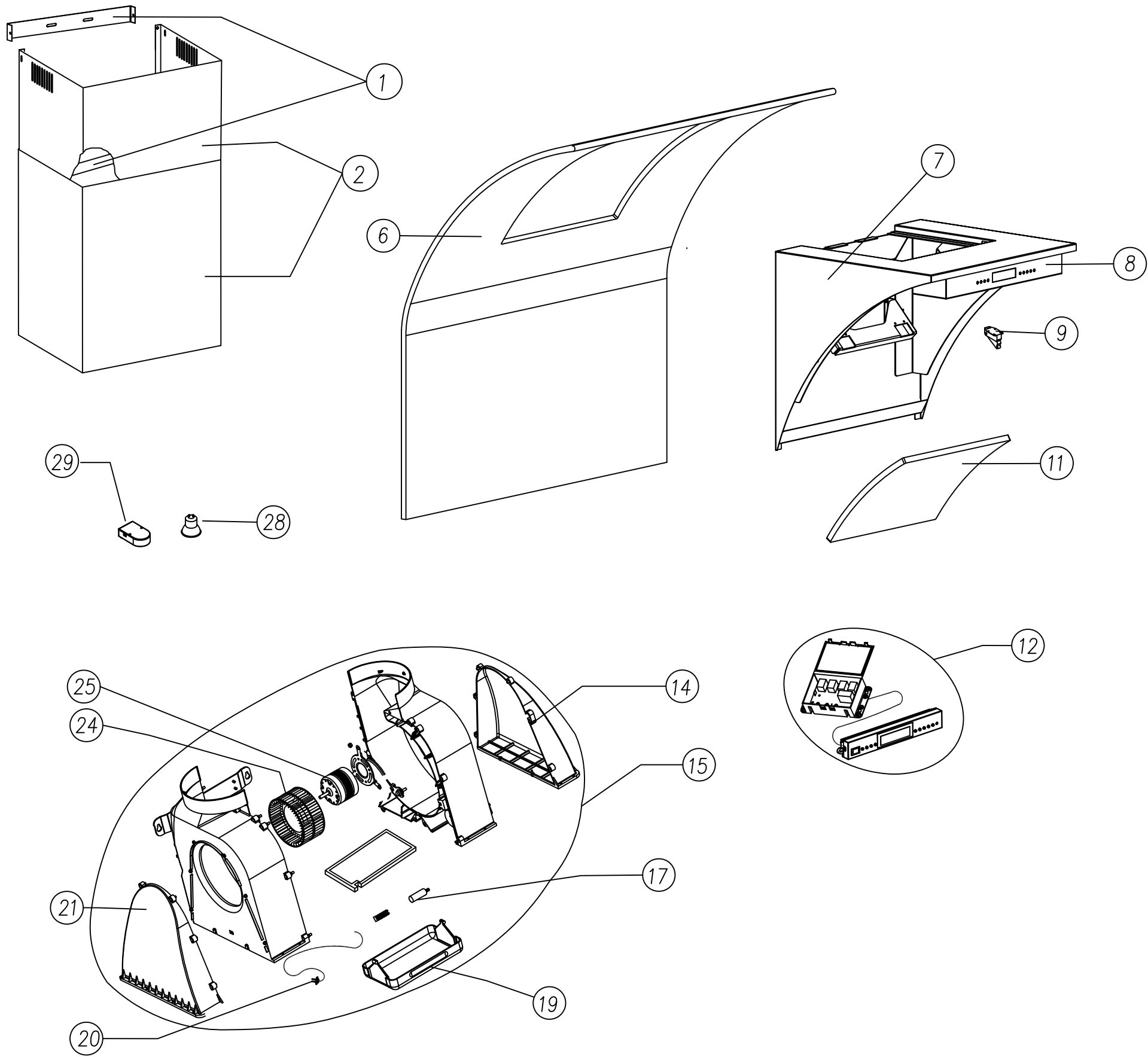


CORHD90SS	Switch Control ref. 15100007
CORHD90SS /B	Switch Control ref. 15100030 (since OCT-09)



29	20600985			1	
28	69000445	Halogen Lamp 230V 50W GU-10		1	
		Lampara Halog 230V 50W GU-10			
25	15102005	TA 4V motor 230V~50Hz		1	
		Motor TA 4V 230V~50Hz			
24	60602015	Motor group turbine	PP V2 NF	1	
		Turbina grupo campana			
21	60604580	Aeris group free side lateral cover	PP+20% V2 NF	1	
		Tapa lateral lado libre grupo Aeris			
20	60000165	Power wire with UK plug		1	
		Cable alimentacion con clavija UK			
19	60604585	Grease tray Aeris group	PC	1	
		Bandeja recoge-grasas			
17	62000105	Capacitor 6,5µf		1	
		Condensador 6,5µf			
15	15101008	Aeris motor group sat spare		1	
		Recambio grupo motor Aeris			
14	60604575	Aeris motor group side cover	PP+20% V2 NF	1	
		Tapa lateral lado motor grupo Aeris			
12	15100030	DTS (little size) Switch assembly sat spare		1	
		Rec.caja mandos completa DTS (formato pequeño)			
11	69000865	Dusk filter cover Corian		1	
		Tapa filtro Corian Dusk			
	69000870	White Glacier filter cover Corian		1	
		Tapa filtro Corian blanco Glacier			
9	69000760	Zinc impact closed push-push		2	
		Cierre de impacto push-push cincado			
8	40403180	Command panel silk screening DT4+bot. support		1	
		Panel comand.serig. Corian DT4+soporte bot.			
7	62807460	Corian casing		1	
		Carcasa Corian			
6	69000855	Short exterior dusk pleasure Cor-S		1	
		Placa exterior corta Cor-S dusk			
	69000885	Short exterior white pleasure Cor-S		1	
		Placa exterior corta Cor-S blanco glacier			
	69000865	Large exterior dusk pleasure Cor-L		1	
		Placa exterior larga Cor-L dusk			
	69000860	Large exterior white pleasure Cor-L		1	
		Placa exterior larga Cor-L blanco glacier			
2	15103054	S.Steel Corian Tube Lower+Upper Spare		1	
		Rec. Tubo Inf+Sup Inox Corian			
1	20401515	Accessories Bag 210 wide Tube (without Outlet)		1	
		Bolsa Acc. Tubo 320 sin Reductor			
N.	REF.	DENOMINACION/NAME	NOTES	U	MAT.

							Nombre:	Fecha:	Material:	Modelo:
							Dibujado:	D.García	24-09-07	Peso:
							Comprobado:		Color:	NºPiezas Referencia:
							Pagina:		Destino:	02128026
							Escala:	Denominación:	Despiece / Break Down Drawing CORHD90SS	
Indice	Change the Switch Control ref. , the Lamp and the Lampholder	D.García	18-12-09	01						
	Creacion nuevo documento / New document	D.García	24-09-07	00						
	M O D I F I C A C I O N E S	Modificado por:	Fecha	Mod:						

cata
ELECTRODOMESTICOS S.L.



Cotas sin tolerancia:
.....6 >6...30 >30...120 >...120
±0.1 ±0.2 ±0.3 ±0.5

	Nombre:	Fecha:	Material:	Modelo:
	Dibujado:	D.García	24-09-07	Peso:
	Comprobado:		Color:	NºPiezas Referencia:
	Pagina:		Destino:	02128026
	Escala:	Denominación:	Despiece / Break Down Drawing CORHD90SS	