



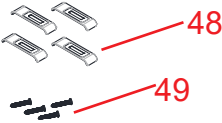
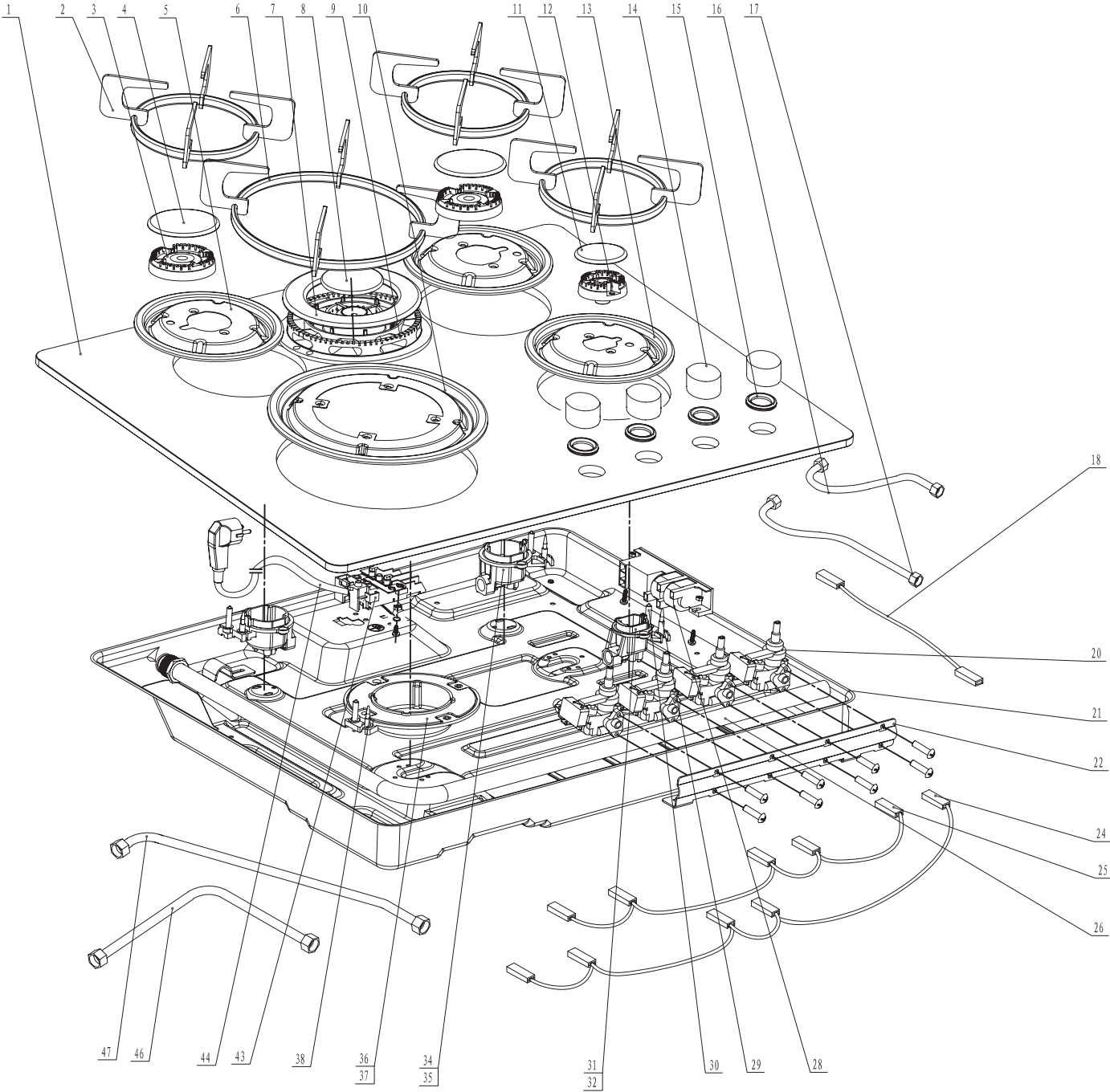
Gas Hob:TPGG60

Version:03

Date:2016-08-08

Product reference code:TPGG60A

# TPGG60 Exploded drawing



03	change No.20	Eason	2016.08.08
02	change No.20/30	Eason	2016.07.26
01	Add No.48/49	Eason	2015.07.06
00	New document	Eason	2014.06.07
Index	Modify description	Modified by	Date

# TPGG60 parts list

No.	Ref code	Midea new Part Code	Part name English	Part name Chinese	Qty	Remark
1	423120100199	12566200A00018	glass panel	玻璃面板	1	
2	423225500224	12366200000472	pan support components	锅支架组件	3	
3	261566800900	12971100001461	flame spreader #3	喷火器 #3	2	
4	261566400300	12971100001431	cap #3	火盖 #3	2	
5	423225700105	12266200000736	drip tray #3	承液盘 #3	2	
6	423225500231	12366200000466	pan support components	锅支架 #1	1	
7	423225800321	12366200000099	outer cap #1	外环火盖 #1	1	
8	423225800322	12366200000098	inner cap #1	内环火盖 #1	1	
9	423225700135	12366200000265	flame spreader #1	分气盘 #1	1	
10	423225700114	12266200000737	drip tray #1	承液盘 #1	1	
11	261566400200	12971100001427	cap #4	火盖 #4	1	
12	261566801000	12971100001457	flame spreader #4	喷火器 #4	1	
13	423225700103	12266200000735	drip tray #4	承液盘 #4	1	
14	423320000067	12166200000038	knob components	旋钮组件	4	
15	423320400079	12666200000053	knob waterproof rubber ring	旋钮防水胶圈	4	
16	423226200155	12966200S00018	pipe components	配气管(右下)	1	
17	423226200154	12966200S00024	pipe components	配气管(右上)	1	
18	423020400017	17466200000023	connection wire	连接线	1	
20	423225900706	12366200S00044	valve components(Auxiliary)-Old	阀体组件	1	From August 2014 to stop using
	423225900779	12366200000201	valve components(Auxiliary)-New			From August 2014 after started
	423225900707	12366200S00034	valve components(Semi-rapid)-Old	阀体组件	2	From August 2014 to stop using
	423225900780	12366200000202	valve components(Semi-rapid)-New			From August 2014 after started
	423225900709	12366200S00037	valve components(Rapid)-Old	阀体组件	1	From August 2014 to stop using
	423225900781	12366200000208	valve components(Rapid)-New			From August 2014 after started
21	423225600086	12266200000216	bottom plate	底壳	1	
22	423229600194	12266200000578	valve bracket	阀体支架	1	
24	423020400018	17466200000024	wire of Micro Switch	微动开关连接线	1	
25	423020400012	17466200000022	wire of Micro Switch	微动开关连接线	1	
26	423226100205	12966200000035	inlet pipe components	进气管组件	1	
28	261257500260	17471100000197	ignition box	脉冲点火器	1	
29	423023100029	12966200000320	Thermocouple components	热电偶组件	2	
30	261555602101	12971100001255	ignition pin components	点火针组件 600mm	1	
30	291600200003	12971100001239	ignition pin components	点火针组件 600mm	2	
30	261555604800	12971100001261	ignition pin components-Rapid	点火针组件 220mm	1	
31	291600100078	12971100001295	cup #4	底杯 #4	1	
32	423229100450	12966200000415	injector #4(NG) Auxiliary	喷嘴 #4	1	
34	291600100077	12971100001285	cup #3	底杯 #3	2	
35	423229100451	12966200000401	injector #3(NG) Semi-rapid	喷嘴 #3	2	
36	423226600019	12366200000085	cup #1	底杯 #1	1	
37	423229100453	12966200000387	injector #1(NG) Rapid	喷嘴 #1	1	
38	423023100028	12966200000319	One coil thermocouple	单线圈热电偶	1	
43	423324000012	12166200000091	terminal box	接线盒	1	
44	423020300023	17466200000040	power cord	电源线	1	
46	423226200182	12966200S00026	pipe components	配气管(左下)	1	
47	423226200152	12966200S00007	pipe components	配气管 (左上)	1	
48	423229600165	12266200000582	fixing brackets	底壳固定片	4	
49	424020100060	11303309000019	Screw M4*14	十字自攻锁紧螺钉	4	
annex	423229100447	12966200000385	injector #3(LPG) Semi-rapid	喷嘴φ70(Y)	2	
	423229100446	12966200000384	injector #4(LPG) Auxiliary	喷嘴φ50(Y)	1	
	423229100449	12966200000400	injector #1(LPG) Rapid	喷嘴φ120(Y)	1	