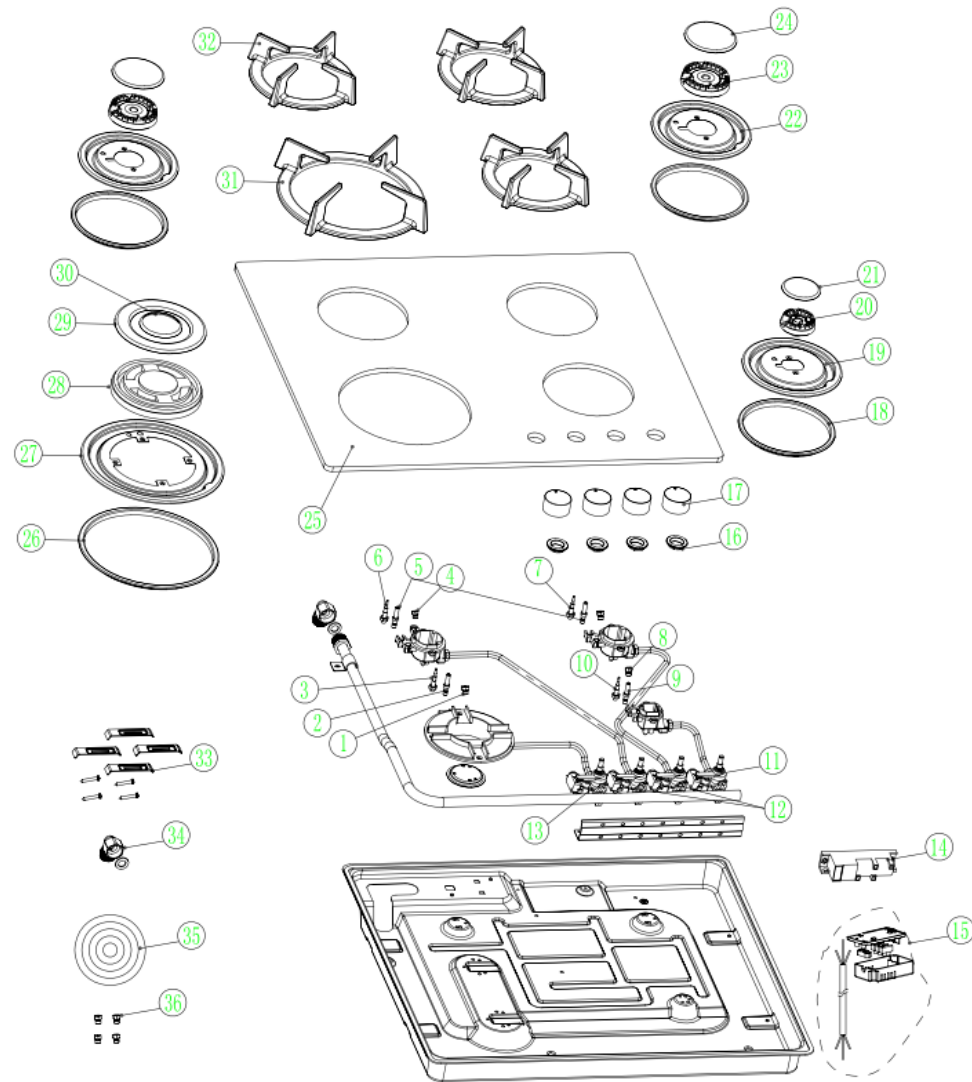


UBGHJ603 Parts Manual



UBGHJ603 spare parts list

NO.	code	零部件名称	Part Name	QTY.	Material	Notes
1	1.8.2010124	喷嘴1.24	Nozzle 1.24(NG)	1	HPb59-1	
2	3.2.2000350	大炉头点火针350mm	1# Burner Ignition pin-350mm	1		
3	3.3.2100350	大炉头热电偶350mm	1# Burner thermocouple-350mm	1		
4	1.8.2010098	喷嘴0.98	Nozzle 0.98(NG)	2	HPb59-1	
5	3.2.1000250	小炉头点火针250mm	Ignition pin-250mm	2		
6	3.3.1100450	小炉头热电偶450mm	thermocouple-450mm	1		
7	3.3.1100350	小炉头热电偶350mm	thermocouple-350mm	1		
8	1.8.2010074	喷嘴0.74	Nozzle 0.74(NG)	2	HPb59-1	
9	3.2.1000350	小炉头点火针350mm	Ignition pin-350mm	1		
10	3.3.1100250	小炉头热电偶250mm	thermocouple-250mm	1		
11	1.7.1157606	安全阀0.65	safety valve 0.65 (Longer Shaft)	1	Assembly	Used until production code R15W03
	1.7.1152602	安全阀0.65	safety valve 0.65 (Shorter Shaft)			Used after production code R15W03
12	1.7.1157607	安全阀0.72	safety valve 0.72 (Longer Shaft)	2	Assembly	Used until production code R15W03
	1.7.1152603	安全阀0.72	safety valve 0.72 (Shorter Shaft)			Used after production code R15W03
13	1.7.1157609	安全阀0.99	safety valve 0.99 (Longer Shaft)	1	Assembly	Used until production code R15W03
	1.7.1152605	安全阀0.99	safety valve 0.99 (Shorter Shaft)			Used after production code R15W03
14	3.4.2200004	脉冲点火器220V-240V	Impulsive ignition device 220V-240V	1	Assembly	
15	3.1.0000001	电源线接线盒	Terminal block	1	Assembly	
16	4.2.6142004	玻璃旋钮防水圈	Glass knob gasket	4		
17	8.2.0016303_1	K30旋钮(短轴)	K30 knob (for longer shaft tap)	4		Used until production code R15W03
	8.2.0016303	K30旋钮	Control Knob (for shorter shaft tap)			Used after production code R15W03
18	4.2.6142003	Ø138防水圈	Ø138 gasket	3		
19	7.2.6142161	4#容水盘	4# water tray	1	AL	
20	1.6.2420215	4#分火器	4# burner divider	1		
21	1.6.2440022	4#火盖	4# burner cap	1	Castiron	
22	7.2.6142121	3#容水盘	3# water tray	2		
23	1.6.2320215	3#分火器	3# burner divider	2	AL	
24	1.6.2340022	3#火盖	3# burner cap	2	Castiron	
25	2.1.6242006	玻璃面板	Glass Panel	1	Glass	
26	4.2.6142001	Ø200防水圈	Ø200 gasket	1		
27	7.2.6142031	1#容水盘	1# water tray	1		
28	1.6.2120215	1#分火器	1# burner divider	1	AL	
29	1.6.2150022	外圈火盖	outer ring burner cap	1	Castiron	
30	1.6.2160022	内圈火盖	inner ring burner cap	1	Castiron	
31	7.1.6242012	圆形大铸铁架	Triple circle cast iron pan support	1	Castiron	
32	7.1.6242032	圆形小铸铁架	Lower circle cast iron pan support	3	Castiron	
33	1.3.0000001	安装挂钩	4xfixture and 4xscrews	4		
34	1.9.0000003	四分弯头	90°connection elbow 1/2"M-1/2"F	1		
35	5.6.0000002	海绵条	waterproof sponge	1		
36	1.8.1010088/69/51	LPG 喷嘴	LPG Nozzle 0.88*1/0.69*2/0.51*1	4	HPb59-1	