

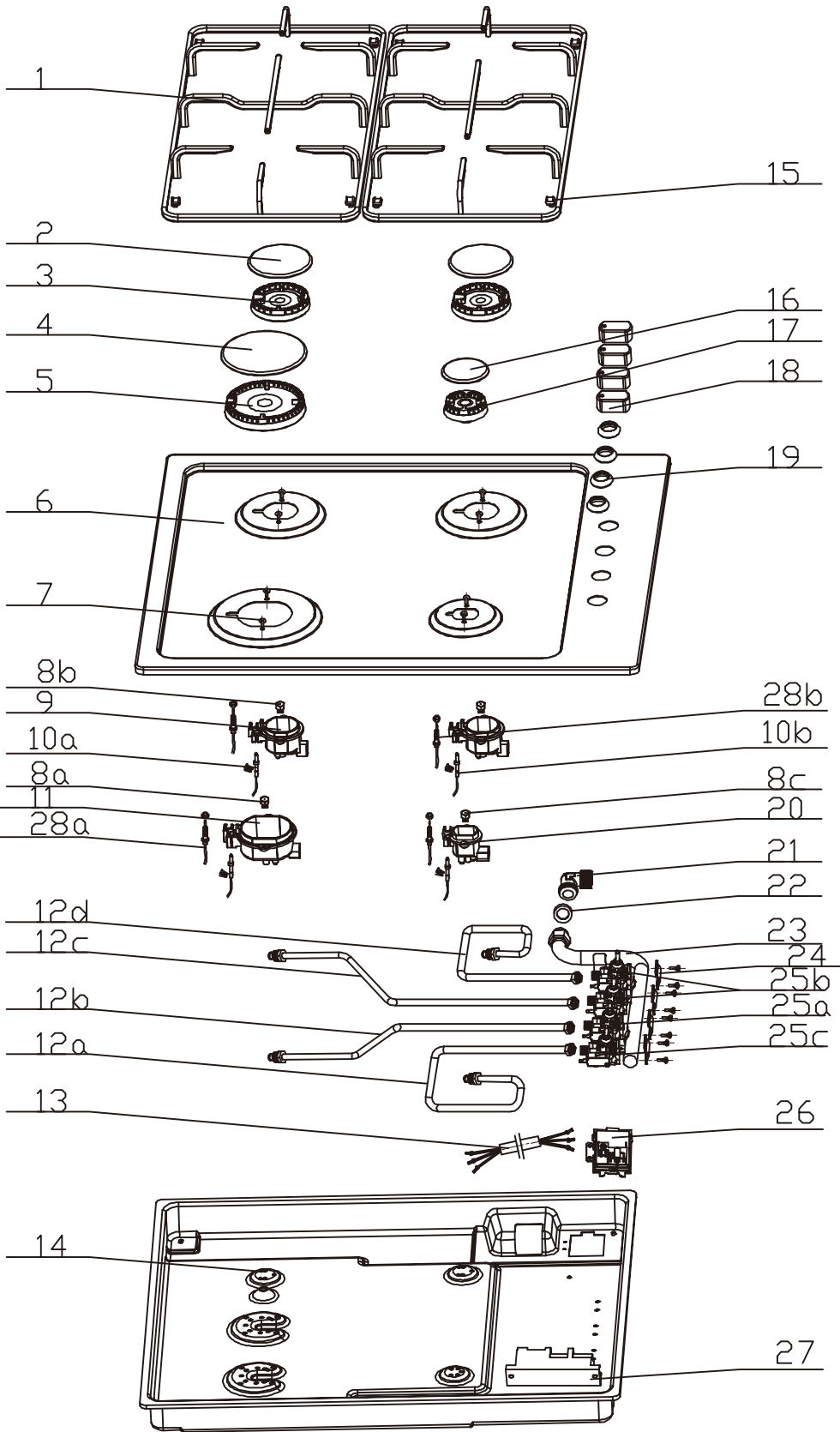
Gas Hob:CLGH3ASS

Version:01

Date:2015-05-29

Product reference code:29394906

CLGH3ASS Exploded drawing



01	New document	Eason	2015. 5. 29
Index	Modify description	Modified by	Date

# CLGH3ASS parts list

No.	part code	part Description	Qty
1	32247005	pan support assembly	2
2	32213003	70# burner cap	2
3	32222006	70# burner	2
4	32214005	100# burner cap	1
5	32223005	100# burner	1
6	32173030	S.S panel	1
7	20106011	screw	8
8a	32191007	100# NG nozzle	1
	32192010	100# LPG nozzle	
8b	32191002	70# NG nozzle	2
	32192006	70# LPG nozzle	
8c	32191005	50# NG nozzle	1
	32192013	50# LPG nozzle	
9	32202007	70# burner basement	2
10a	32300007	ignition pin (22/500)	2
10b	32300006	ignition pin (22/350)	2
11	32203005	100# burner basement	1
12a	32163025	tube A	1
12b	32163026	tube B	1
12c	32163027	tube C	1
12d	32163028	tube D	1
13	32307043	power cord	1
14	32002053	bottom plate	1
15	32102003	rubber foot	8
16	32212007	50# burner cap	1
17	32221004	50# burner	1
18	32244048	K41 knob	4
19	32120003	waterproof ring	4
20	32201004	50# burner basement	1
21	32243006	90° connection elbow	1
22	32258016	gasket	2
23	32160122	gas intake tube assembly	1
24	32001012	fixing plate	4
25a	32113014	100# valve	1
25b	32113028	70# valve	2
25c	32113027	50# valve	1
26	32311018	connection box	1
27	32304004	Pulser	1
28a	32312005	Thermocouple (38/500)	2
28b	32312004	Thermocouple (38/360)	2

# CLGH3ASS Wiring diagram

