


| BWD60CL | | | |
|---------|-----------------|------------------------------|------|
| No. | Parts code | Parts description | Qty. |
| 1 | 0020203436A | observe the window frame | 1 |
| 2 | 0020203438 | watch window box | 1 |
| 3 | 0020100284A | observe windows buckle | 1 |
| 4 | 0020203475 | watch window screen | 1 |
| 5 | 00330810009 | screw | 10 |
| 6 | 0020103078A | door hinges | 2 |
| 7 | 0020201212 | hinge set | 2 |
| 8 | 0020100751 | door hinges | 1 |
| 9 | 0020203510 | the plaque | 1 |
| 10 | 00330810009 | screw | 1 |
| 11 | 00330802008A | tapping screw | 3 |
| 12 | 00216910320111A | tapping screw | 1 |
| 13 | 0020806158H | former board assembly | 1 |
| 14 | 0020600029 | tapping screws | 2 |
| 15 | 0020102832 | compression spring | 1 |
| 16 | 0020203445 | splitter box | 1 |
| 17 | 00330810033 | tapping screws | 2 |
| 18 | 0020506917H | printing handle | 1 |
| 19 | 0021400015 | observation window | 1 |
| 20 | 0020203446 | pc board box | 1 |
| 21 | 0021800032 | pc board | 1 |
| 22 | 0020203447 | pc board lid | 1 |
| 23 | 0020203423A | buttons | 2 |
| 24 | 0020203423A | buttons | 4 |
| 25 | 0020203425A | buttons | 1 |
| 26 | 0020203451 | guide beam | 1 |
| 27 | 0020203452 | guide beam | 1 |
| 28 | 0020506916C | printing control panel plate | 1 |
| 29 | 0020506957A | printing pmmc plate | 1 |
| 30 | 0020203444A | knob | 1 |
| 31 | 0020203433 | knob shaft | 1 |
| 32 | 0024000259 | temperature sensor | 1 |
| 33 | 0024000128A | locks | 1 |
| 34 | 0020400256 | control cable assembly | 1 |
| 35 | 0020600029 | self-tapping screws | 1 |
| 36 | 0024000256 | apacitance | 1 |
| 37 | 0024000317 | water-level sensor | 1 |
| 38 | 00221120022006 | printing decorating plate | 1 |
| 39 | 0020400491A | interference suppressor | 1 |
| 40 | 00215000000001A | nut | 1 |
| 41 | 00215000000002A | nut | 1 |
| 42 | 0020300170E | the feet | 4 |
| 43 | 0024000152 | inductance | 1 |
| 44 | 0020400087B | harness | 1 |
| 45 | 0020203374A | go trough short | 1 |
| 46 | 00221150320000 | buckle belt clamp | 1 |
| 47 | 0020203315 | go trough short | 1 |
| 48 | 00221150320000 | buckle belt clamp | 1 |
| 49 | 0020100505B | back cover | 1 |
| 50 | 0020600179 | screw | 1 |
| 51 | 0020100770A | iron table-board | 1 |
| 52 | 00216910320111A | self-tapping screws | 1 |
| 53 | 00221150320000 | buckle belt clamp | 2 |
| 54 | 0024000274 | electromagnetic valve | 1 |
| 55 | 00221150320000 | buckle belt clamp | 2 |
| 56 | 00221150320000 | buckle belt clamp | 1 |
| 57 | 0020808157 | cabient fasten assembling | 1 |
| 58 | 00218230550611 | tube clamps | 2 |
| 59 | 0020803673 | door hinges assembly | 2 |

| | | | | | | | | | | | |
|-------|--------------------|--------------|----------|------|----------------------------------------------------------------------------------------------------------------------------------------------------------------------------------------------------------------------------------------------------------------------------------------------------------------------------------------------------------------------------------------------------------------------------------|----------|---------------|-----------|----------|----------|------------|
| | | | | | <div><div><div>cataC</div><div>ELECTRODOMESTICOS S.L.</div></div><div><div><div><div><div></div><div></div></div><div><div></div><div></div></div></div><div><div>DIM without tolerance</div><div><div>.....6</div><div>>6...30</div><div>>30...120</div><div>>...120</div></div><div><div>±0.1</div><div>±0.2</div><div>±0.3</div><div>±0.5</div></div></div><div><div>Dimenitions in mm</div></div></div></div></div> | Name: | Date: | Material: | Model: | | |
| | | | | | | Drewed: | Paul | 13-01-14 | Weight: | BWD60CL | |
| | | | | | | Checked: | | | Colour: | N°Pieces | Reference: |
| | | | | | | Page: | | | Destiny: | BWD60CL | |
| | | | | | | Scale: | Denomination: | | | | |
| | New document | Paul | 13-01-14 | 00 | Break down drawing_washing machine_BWD60CL | | | | | | |
| Index | Modify Description | Modified by: | Date | Mod: | | | | | | | |



ELECTRODOMESTICOS S.L.

Dimenions in mm

.....6

>6...30

>30...120

>...120

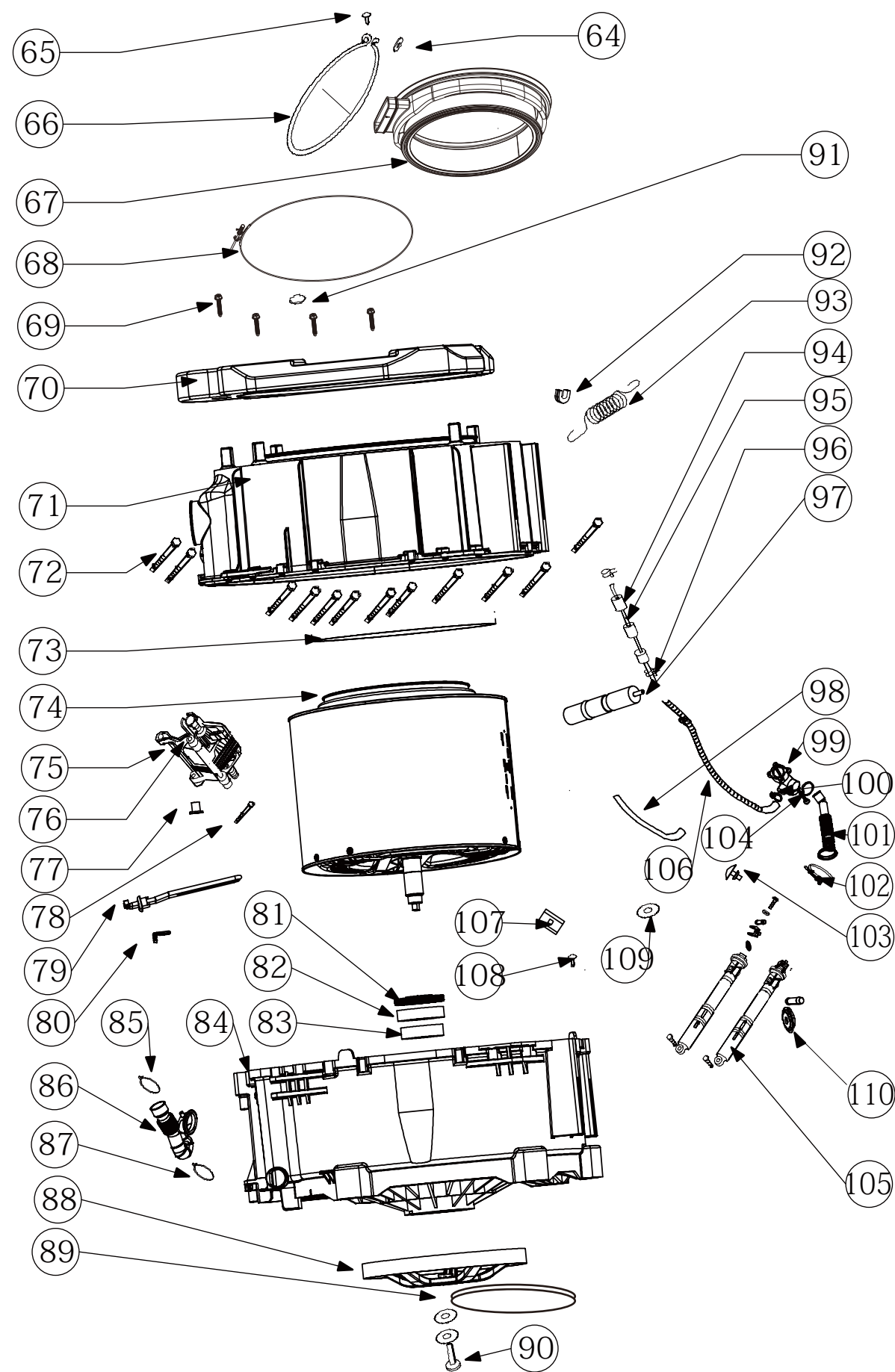
±0.1

±0.2

±0.3

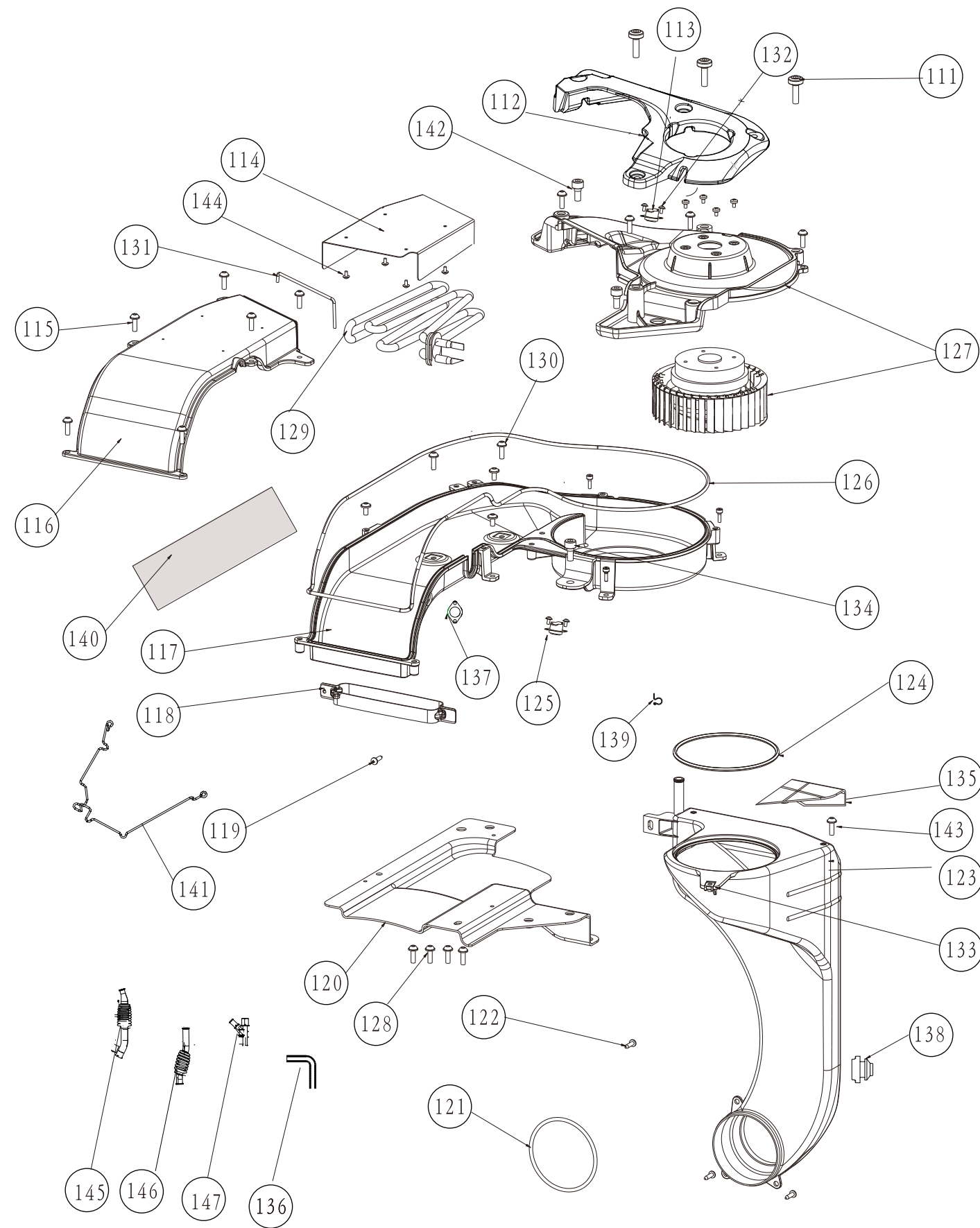
±0.5

DIM without tolerance



| | | | |
|-----|-------------------|-------------------------------------------------|----|
| 59 | 0020803673 | door hinges assembly | 2 |
| 60 | 0020806436B | storage tank assembly | 1 |
| 61 | 0020400196M | power cable assembly | 1 |
| 62 | 0020100720E | shell anterior strengthen pieces | 1 |
| 63 | 0020202683 | locks bars | 1 |
| 64 | 00214800021100 | nylon nuts | 1 |
| 65 | 00215100000200 | self-tapping screws | 1 |
| 66 | 0020600081 | watch window mat before fastening ring | 1 |
| 67 | 0020300776 | watch window mat | 1 |
| 68 | 0020600211A | watch window mat after fastening ring | 1 |
| 69 | 0020600285 | former counterweight block tightening bolt | 4 |
| 70 | 0020100771A | former counterweight block | 1 |
| 71 | 0020203432 | plastic outside cylinder before | 1 |
| 72 | 00215100001000 | m screws | 15 |
| 73 | 0020300510 | outside cylinder seals | 1 |
| 74 | 0020808361 | inner tub assembling | 1 |
| 75 | 0024000133C | motor | 1 |
| 76 | 0020202717 | motor casing | 2 |
| 77 | 0020300466 | motor bushing | 2 |
| 78 | 00215100001000 | m screws | 2 |
| 79 | 0024000279 | water heating tube | 1 |
| 80 | 0020100432 | heating tube scaffold | 1 |
| 81 | 0020300340 | oil seal | 1 |
| 82 | 0020600069 | bearing | 1 |
| 83 | 0020600157 | bearing | 1 |
| 84 | 0020807318 | rear outer drum (inc bearings and bearing seal) | 1 |
| 85 | 00218230550611 | tube clamps | 1 |
| 86 | 0020300361B | distributor to outer tube hose | 1 |
| 87 | 00211320018800A | tube clamps | 1 |
| 88 | 0020100431 | pulley | 1 |
| 89 | 0020300385 | belt | 1 |
| 90 | 00215000014000A | bolts | 1 |
| 91 | 00217440540612 | gasket | 8 |
| 92 | 0020203391 | spring stents | 2 |
| 93 | 0020600210A | outside cylinder suspension spring | 2 |
| 94 | 00212500011100 | the pressure switch tube sticky sponge | 4 |
| 95 | 0020300430A | the pressure switch hose | 1 |
| 96 | 0020600050A | tube clamps | 1 |
| 97 | 0020202906 | set valve | 1 |
| 98 | 0020300379A | drainage pumps flow despite | 1 |
| 99 | 0022150033660401A | drainage pumps | 1 |
| 100 | 0020600050A | tube clamps | 1 |
| 101 | 0020300387A | the tube to pump hose | 1 |
| 102 | 00297023000100A | tube clamps | 1 |
| 103 | 0020203456 | plastic hole plug | 1 |
| 104 | 00215200294400A | tube clamps | 1 |
| 105 | 0020600212 | shock absorber | 2 |
| 106 | 0020300148 | drain | 1 |
| 107 | 00215200294400A | tube clamps | 2 |
| 108 | 00217440540612 | gasket | 2 |
| 109 | 0020202225 | shock absorber pins | 2 |
| 110 | 00215000035200 | gasket | 2 |

| | | | | | | | | | | | |
|-------|--------------------|--------------|----------|------|-----------------------------------------------------------------------------------------------------------------------------------------------------------------------------------------------------------------------------------------------------------------|--------------------------------------------|---------------|-----------|----------|----------|------------|
| | | | | | <div><div><div>cataC</div><div>ELECTRODOMESTICOS S.L.</div></div><div><div><div></div><div></div></div><div>DIM without tolerance</div><div>.....6 >6...30 >30...120 >...120</div><div>±0.1 ±0.2 ±0.3 ±0.5</div><div>Dimenions in mm</div></div></div> | Name: | Date: | Material: | Model: | | |
| | | | | | | Drawn: | Paul | 13-01-14 | Weight: | BWD60CL | |
| | | | | | | Checked: | | | Colour: | N°Pieces | Reference: |
| | | | | | | Page: | | | Destiny: | | BWD60CL |
| | New document | Paul | 13-01-14 | 00 | | Scale: | Denomination: | | | | |
| Index | Modify Description | Modified by: | Date | Mod: | | Break down drawing_washing machine_BWD60CL | | | | | |



| | | | |
|-----|-----------------|------------------------------------------|----|
| 111 | 00215000014000A | bolts | 3 |
| 112 | 0020100647 | balance up | 1 |
| 113 | 0024000304 | a thermostat | 1 |
| 114 | 0020100645 | reflex plate | 1 |
| 115 | 00330812014A | tapping screw | 16 |
| 116 | 0020100623B | drying device shell | 1 |
| 117 | 0020100622B | drying equipment under shell | 1 |
| 118 | 0020600229 | the tubular clip | 1 |
| 119 | 00216910320111A | self-tapping screws | 1 |
| 120 | 0020100644A | drying equipment fixed board | 1 |
| 121 | 0020300611 | outside cylinder seals | 1 |
| 122 | 00330802008A | tapping screw | 5 |
| 123 | 0020203211 | the condenser | 1 |
| 124 | 0020300610 | sealing strip | 1 |
| 125 | 0024000315 | a thermostat | 1 |
| 126 | 0020300605A | sealing strip | 1 |
| 127 | 0024000227A | drying motor | 1 |
| 128 | 00330802080A | tapping screw | 4 |
| 129 | 0024000223 | dry heating tube | 1 |
| 130 | 0020600176 | screws | 2 |
| 131 | 0020300604 | drying device sealing strip | 1 |
| 132 | 0010600332 | m screws | 4 |
| 133 | 0120600807 | button | 1 |
| 134 | 0020600179 | screws | 3 |
| 135 | 0020203380 | drying filtering duct partitions | 1 |
| 136 | 0020300264C | electromagnetic valve to condenser hose | 1 |
| 137 | 0020300607 | feeling wenqi seal cushion | 2 |
| 138 | 0020300606 | feeling wenqi seal cushion | 2 |
| 139 | 0020600208 | tube clamps | 1 |
| 140 | 0020300688B | counterweight block under | 1 |
| 141 | 0020100721C | cable guide bracket | 1 |
| 142 | 00330812014A | tapping screw | 4 |
| 143 | 00215100000400 | screw | 2 |
| 144 | 0020600153 | screw | 4 |
| 145 | 0020300612C | storage tank to outer tube hose | 1 |
| 146 | 0020300612D | tee to single electromagnetic valve hose | 1 |
| 147 | 0020203513 | three direct links | 1 |
| 148 | 0020203198A | REGION | 1 |

| | | | | | | | | | | | |
|-------|--------------------|--------------|----------|------|--------------------------------------------------------------------------------------------------------------------------------------------------------------------------------------------------------------------------------------------------------------------------------------------------------------------------------------|--------------------------------------------|---------------|-----------|----------|----------|---------------------|
| | | | | | <div><div><div>cataC</div><div>ELECTRODOMESTICOS S.L.</div></div><div><div><div><div></div><div></div></div><div><div></div><div></div></div></div><div><div>DIM without tolerance</div><div>.....6 >6...30 >30...120 >...120</div><div>±0.1 ±0.2 ±0.3 ±0.5</div></div><div>Dimenitions in mm</div></div></div> | Name: | Date: | Material: | Model: | | |
| | | | | | | | Drawed: | Paul | 13-01-14 | Weight: | BWD60CL |
| | | | | | | | Checked: | | | Colour: | N°Pieces Reference: |
| | | | | | | | Page: | | | Destiny: | BWD60CL |
| | New document | Paul | 13-01-14 | 00 | | Scale: | Denomination: | | | | |
| Index | Modify Description | Modified by: | Date | Mod: | | Break down drawing_washing machine_BWD60CL | | | | | |