



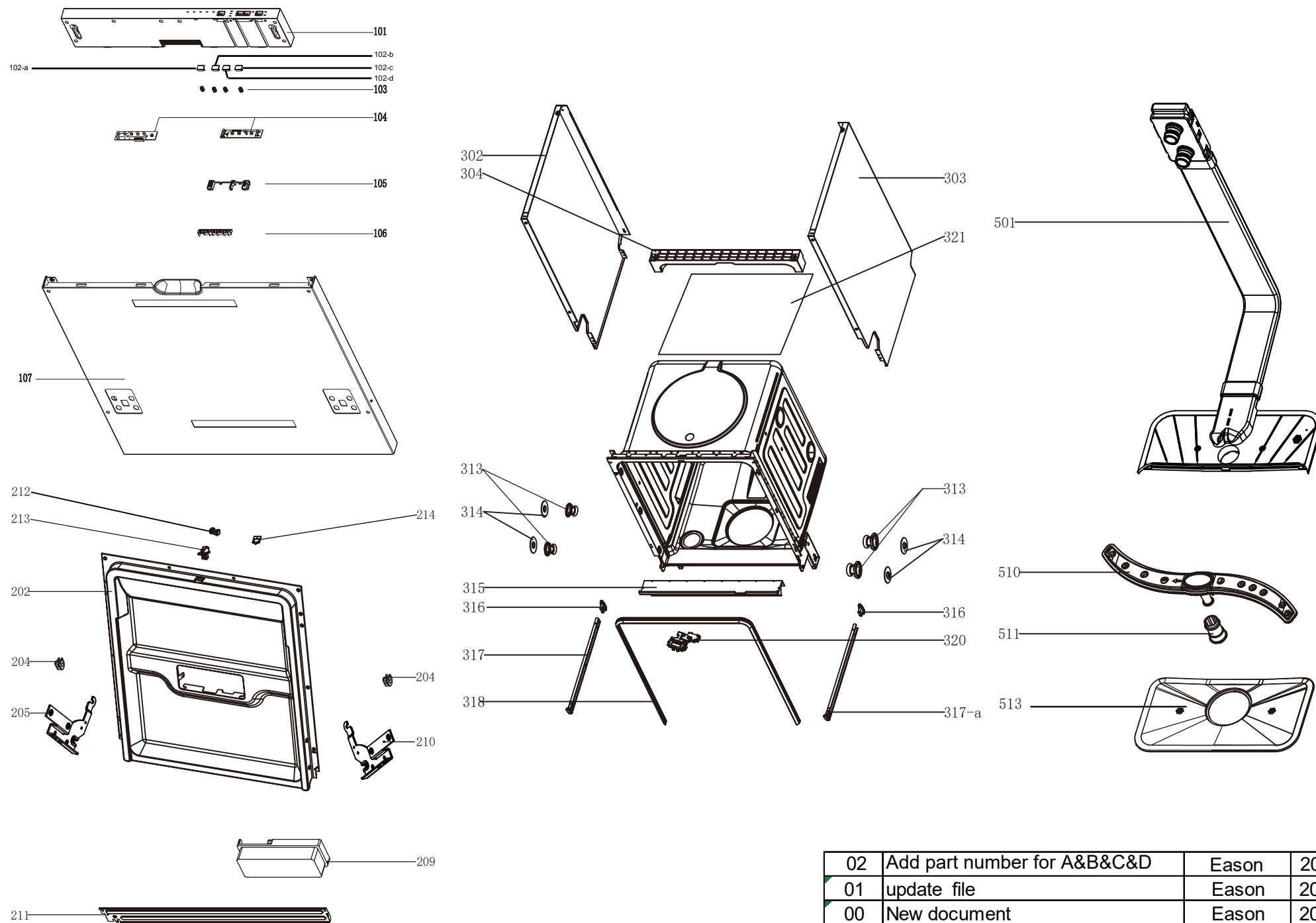
Dishwasher:IDW60M

Version:02

Date:2017-11-20

Product reference code:IDW60M

IDW60M Exploded drawing(1)



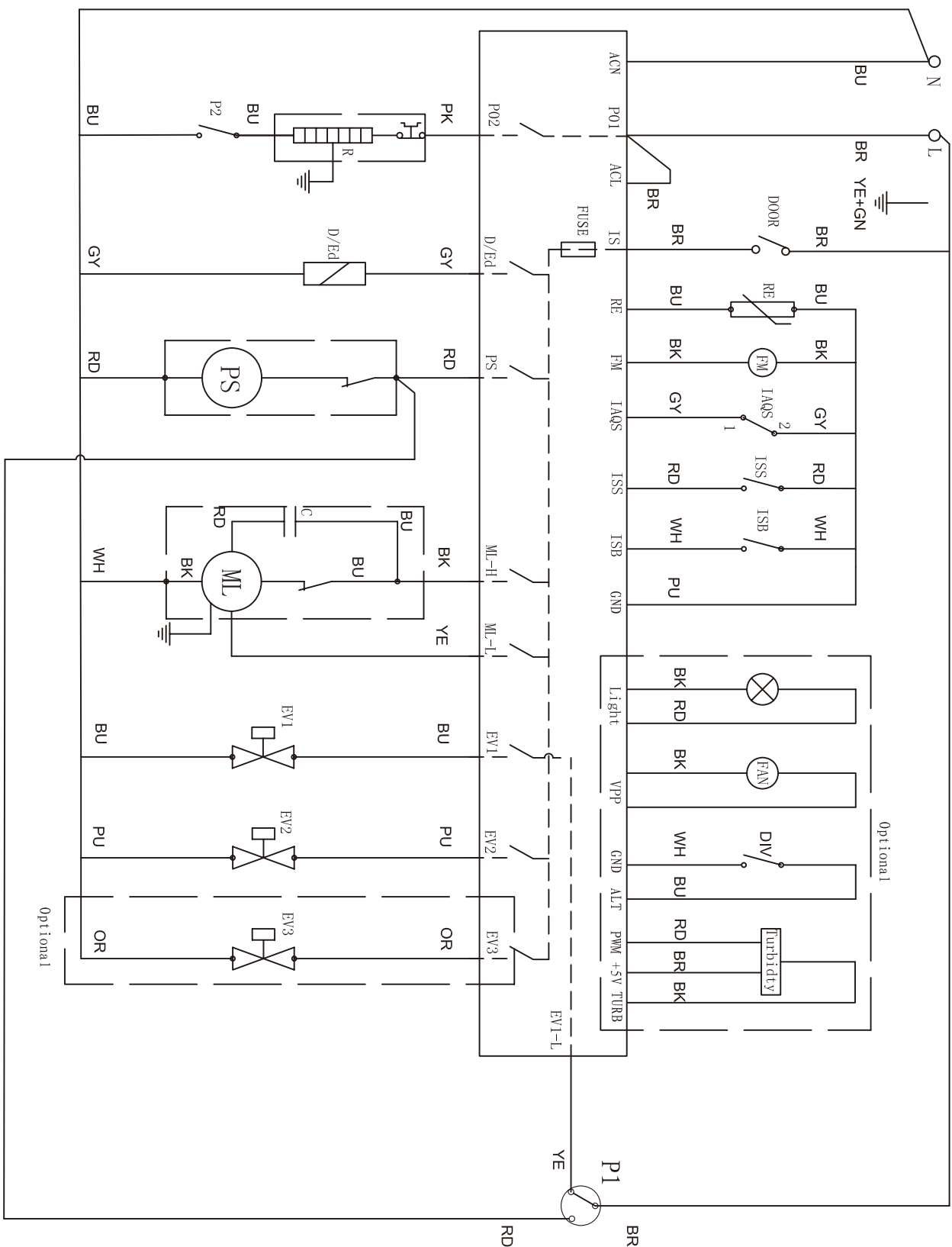
02	Add part number for A&B&C&D	Eason	2017.11.20
01	update file	Eason	2016.10.31
00	New document	Eason	2016.05.31
Index	Modify description	Modified by	Date

IDW60M parts list

NO.	Part code	Ref Part No.	Description	Qty	Remark
101	25107635	12176000A15340	control panel	1	add
102-a	25107550	12176000016725	program button	1	add
102-b	25107555	12176000016724	delay button	1	add
102-c	25107560	12176000016727	power button	1	add
102-d	25107565	12176000016728	1/2 Button	1	add
103	672000100089	12976000000141	button spring	4	
104	25107570	17176000014963	Dashboard	1	add
105	25107575	12176000016705	delay and half load light guide	1	add
106	25107580	12176000016703	program light guide	1	add
107	672001801317	12276000006322	out door	1	
202	672002200523	12276000005191	inner door assembly	1	
204	672002300049	12176000003629	friction strip hooking clamping	2	
205	672001400062	122760000001731	left hinge assembly	1	
209	674000800070	174760000001467	dispenser	1	
210	672001400061	122760000001778	right hinge assembly	1	
211	672001300077	122760000001805	hinge join board	1	
212	673001320041	121760000008565	Lock buckle fixing block	1	
213	673001320039	121760000009495	door lock hook	1	
214	673000905033	126760000001038	Waterproof silica gel pad	1	
302	672001607099	122760000000979	left side panel assembly	1	
303	672001600610	122760000001132	right side panel	1	
304	673003100024	121760000003869	upper back support	1	
313	673001401022	12176000010412	rail support assembly	4	
314	673001300555	121760000008573	basket guider supporting holder	4	
315	672002300116	122760000001833	anti-noise borad	1	
316	673001300803	121760000008496	cutlery shelf guider link stopper(back)	2	
317	672001700025	122760000001357	upper basket guider(left)	1	
317-a	672001700026	122760000001360	upper basket guider(right)	1	
318	673001700132	126760000000859	tank gasket	1	
320	674000301022	174760000000035	door switch	1	
321	673000102014	12176000010248	back cover board	1	
401	674000000186	174760000000312	power cord	1	
402	673002800187	12176000010640	softener cover	1	
403	674000700064	174760000001365	softener	1	new
	674000700049	174760000001331			2016 October to stop using
404	673001400083	121760000009490	power cord clasper	1	
407	673001400413	121760000009726	foot	3	
408	673001001010	129760000000399	door rope	2	
411	672000190033	129760000000203	door spring assembly	2	
412	672001100016	129760000001001	adjust screw of door spring	2	
413	25107590	12176000019571	base tray	1	new
	673000100081	121760000003073			2016 October to stop using
414	25107595	12176000019565	base cover	1	new
	673000101125	121760000003085			2016 October to stop using
415	673000900354	126760000000138	drain hose assembly	1	
416	673002700611	121760000003906	air breather assembly	1	
417	673001500107	126760000000713	seal	1	
418	673001600099	12176000013663	air breaker nut	1	
419	674000302020	174760000001222	pressure switch	1	
420	25107295	122760000008925	pump support ASSEMBLY	1	add
421	673000900289	126760000000140	inlet hose of air breather	1	
423	674000200054	174760000001144	inlet valve	1	
424	674010030006	174760000001137	overflow switch	1	
426	673001400414	121760000003125	overflow switch seat	1	
427	673001490013	1287600000000050	sleeve cover	1	
428	25107600	17176000014765	PCB	1	add
429	673002400223	121760000003751	pcb seat	1	
430	673002400224	121760000003853	PCB Box	1	
433	60501375	126760000001801	seals	1	add
434	673001600074	121760000009513	softener nut	1	
501	673000903005	121760000009430	inner pipe	1	
510	673000330015	121760000009161	lower sprayer	1	
511	673001300548	121760000008645	sprayer seat	1	
513	673002500134	121760000003689	plane filter	1	
601	60501365	126760000001461	seals	1	add
604	673001300644	121760000009640	filter handle	1	
605	672000700007	129760000000327	396 clamp	2	
606	673002500111	121760000003676	cylinder filter	1	
607	673000900406	126760000000146	inlet pipe	1	
610	674000600168	11001011000449	Permanent magnet synchronous pum	1	
611	25107605	12176000016228	Sumpassembly	1	add
612	673000902001	126760000000651	pvc pipe	1	
613	25107540	126760000001521	Outletpipe	1	new
	673000902000	126760000000168			2016 October to stop using
614	674005600112	174760000001561	induction pump	1	
618	674001100084	174760000001408	heating elements	1	
624	673000900407	126760000000100	inlet pipe	1	
625	672000701001	129760000000308	clamp	2	
628	673000903015	126760000000947	inner drain pipe	1	
629	674000900053	171760000000311	thermostat	1	
701	673003200063	121760000002705	cutlery basket	1	
702	672000810662	129760000000724	basket assembly	1	
703	25107610	129760000003132	lower basket assembly	1	add
704	673003200058	121760000002821	Knife and fork rack	1	
705	673000310035	121760000009173	MIDDLE SPAYER ASSEMBLY	1	
710	25107255	12176000015504	Inlet Pipe Assembly	1	add
711	673002200165	12176000010312	salt filler	1	
712	60101125	174760000006665	Wireharness	1	new
	674000102202	174760000000726			2016 October to stop using
720	670400047004	129760000000292	accessory bag	1	
A	673002101008	126760000001003	Protective sleeve	1	
B	672001100024	129760000000999	Adjusting lever	1	
C	673001300583	121760000008783	helical gear	1	
D	673001400212	121760000003607	Spiral gears	1	

IDW60M Wiring diagram

220-240V/50HZ



IDW60M Exploded drawing(2)

