

Double oven:AMF90VSS2

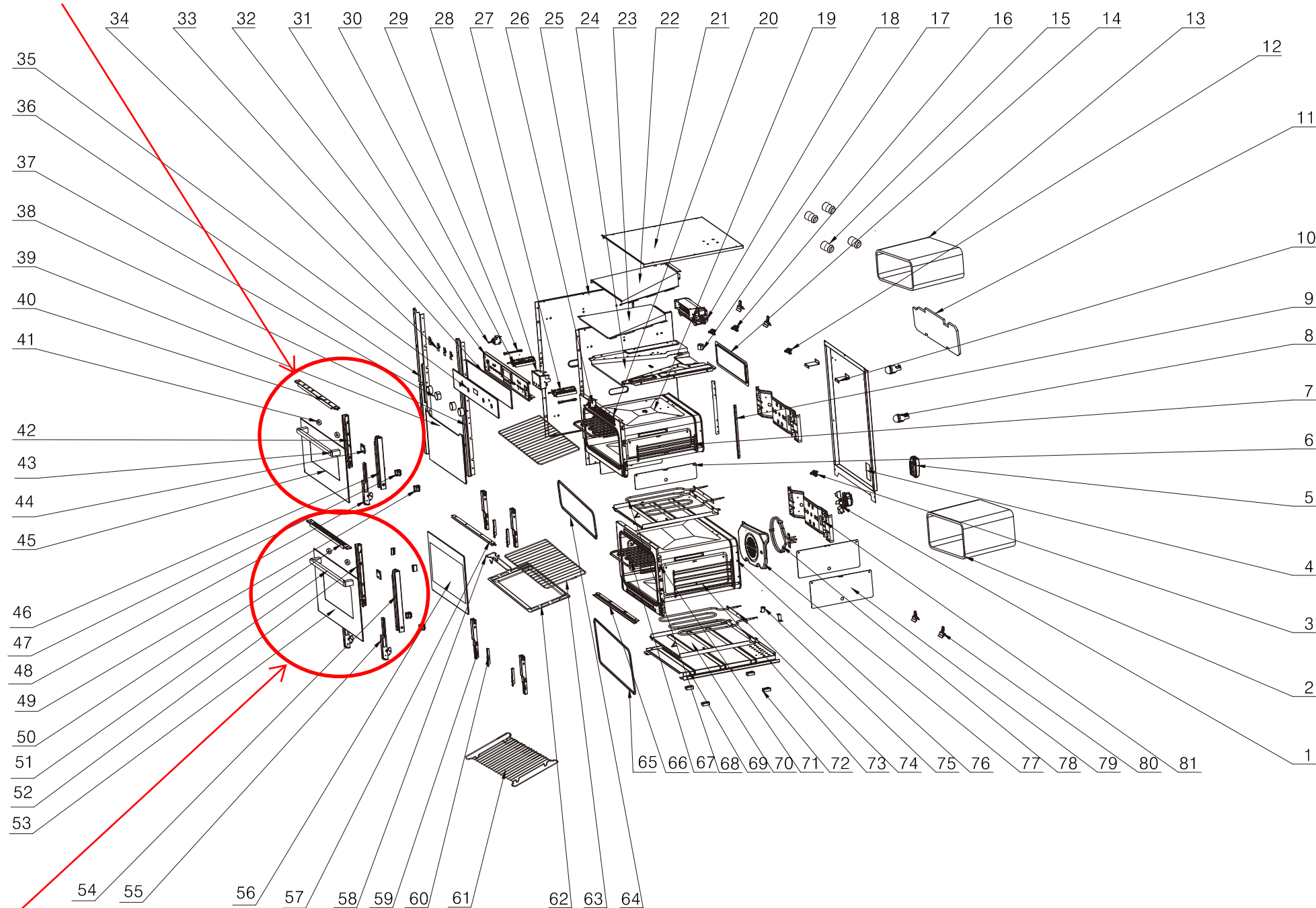
Version:00

Date:2016-06-17

Product reference code:AMF90VSS2

AMF90VSS2 Exploded drawing

UPPER DOOR ASSEMBLY = AMF90VSS2UDR



LOWER DOOR ASSEMBLY = AMF90VSS2LDR

AMF90VSS2 parts list

No.	part No.	part name	品 名	Qty
1	33315002	grill fan assembly	循环风机组件-(划一型号): HY6020V240H	1
2	33120002	heat preservation fibre	内胆圈保温纤维-1(16KG)	1
3	36154001	Thermostat	温控器 SF1-068	1
4	33030020	back cover board	外壳后盖板-AD-K25(B)-02	1
5	33305016	terminal box	接线盒-AD-K25(A)-22	1
6	33039015	side rack panel	导轨支架垫板-AD-K25(B)-06	2
7	33140011	side rack	左右导轨支架-AD-K25(B)-12	2
8	33302002	lamp	灯头组件	2
9	33027012	connect board for top and bottom cavity	上下内胆连接板-AD-K25(A)-11	2
10	33027014	fixing panel for exhausting pipe base board	排烟道底板固定板-AD-K25(A)-13	2
11	33121002	heat preservation fibre	内胆底盖保温纤维	1
12	33308027	over heat protector100℃	过热保护器-100℃	1
13	33120002	heat preservation fibre	内胆圈保温纤维-1(16KG)	1
14	33001037	back catalytic line	背部易洁板-AD-K25(B)-07	1
15	33141002	guide rail bracket fixing axis	导轨支架固定轴-900*480烤箱	4
16	33310003	heat dissipation thermostat	散热温控器	2
17	33215013	exhausting pipe	排烟筒-AD-K25(B)-05	1
18	33313030	cooling fan assembly	散热风机组件(双排气)-AD-K25(A)-50	1
19	33058060	top cavity assembly	内胆组件(上)-AD-K25(B)-20-00	1
20	33018113	cavity panel	内胆面板(上)-AD-K25(B)-20-01	1
21	33031014	top cover plate	外壳上盖板-AD-K25(A)-01	1
22	33028004	exhausting pipe top cover board	排烟道上盖板-自洁烤箱专用	1
23	33026004	exhausting pipe middle cover board	排烟道中盖板-自洁烤箱专用	1
24	33027002	exhausting pipe base board	排烟道底板-自洁烤箱专用	1
25	33033016	side plate (left&right)	外壳左右侧板-AD-K25(B)-01	2
26	33311007	temperature adjuster	温控开关-900*480烤箱专用	1
27	33301034	function switch	档位开关	1
28	33300011	sensor touch timer (3 button)	三键触摸定时器-红色(触摸)	1
29	33312001	indicator light	指示灯	2
30	33301035	function switch	档位开关	1
31	33311018	temperature adjuster	温控开关-K25(A)-21	1
32	33018115	fixing panel for switch	开关面板固定板-AD-K25(A)-17	1
33	91034002	single adhesive tape	单面胶	1
34	33006001	connect board switch	开关面板连接板	4
35	33101463	control panel assembly	开关面板(4功能-5功能)-三键触摸-AD-K25(B)	1
36	33014088	left bracket for out cover plate	外壳左支架-AD-K25(B)-03	1
37	32244031	knob.21	21号旋钮	4
38	33014089	left bracket for out cover plate	外壳右支架-AD-K25(B)-04	1
39	33103023	inner glass(top door)	内玻璃-上(镀膜)-AD-K25(B)-10-02	1
40	33014087	door frame top bracket	门上支架(前面开孔)-AD-K25(A)-10-01	1
41	33214005	handle fixing assem	拉手固定套-PN-K14-60-09	4
42	33014080	door frame left bracket	门框左支架-AD-K25(B)-10-04	1
43	33190007	hanld H1	1号拉手	1
44	33006012	fixing board for handle	拉手固定板-PN-K13-20-07(黑色亮光喷塑后)	2
45	33102370	door panel	门面板-AD-K25(B)-10-01	1
46	33014079	door frame right bracket	门框右支架-AD-K25(B)-10-05	1
47	33014049	fixing panel for inner glass	内玻璃左下固定块-PN-K15(A)-20-08	2
48	33180018	hinge 12	铰链组件-12号铰链	2
49	33014050	fixing panel for inner glass	内玻璃右下固定块-PN-K15(A)-20-09	2
50	33014043	top bracket for oven door	门上支架-PN-K15(A)-20-01	1
51	33190007	hanld H1	1号拉手	1
52	33014082	door frame left bracket	门框左支架-PN-K25(A)-10-03	1
53	33102066	door panel	门面板-418-老门配418的拉手	1
54	33014081	door frame right bracket	门框右支架-PN-K25(A)-10-04	1
55	33180016	hinge 16 assembly	铰链组件-16号铰链	2
56	33103031	inner glass	内玻璃-下(镀膜)-AD-K25(A)-20-01	1
57	33027015	cavity panel connector	内胆面板连接板(前)-AD-K25(A)-09	1
58	33172001	handle for rack	搁架抓手	1
59	33024006	side bracket for cavity(left&right)	内胆左右支架-AD-K25(A)-05	4
60	33005014	fixing board for hinge	铰链固定板-AD-K25(A)-06	4
61	33170003	Tray-shallow	烤盘架(浅)	1
62	33224003	baking tray	油脂收集盘(K1-08)-新工艺	2
63	33170001	grill rack	搁架	2
64	33803013	door seal assembly	门封条组件K25(B)	1
65	33803002	door seal assembly	门封条组件-K1(A)	1
66	33027016	bottom support for cavity panel	内胆面板下支撑-AD-K25(A)-12	1
67	33303006	top heating element	顶层电热管	2
68	33303039	bottom heating element	底层电热管-PN-K14-08	1
69	33029015	bottom cover plate	外壳底板-AD-K25(A)-03	1
70	33003002	fixing board for bottom heating element	底层电热管固定板(K1)	2
71	33018111	cavity panel	内胆面板(下)-AD-K25(A)-40-01	1
72	33237030	the support for bottom cover plate	底板支撑块-PN-K24-08	4
73	33140001	side rack	导轨支架	2
74	33303002	bottom heating element	底层电热管	1
75	33237031	bottom cover plate	外壳底板加强板-AD-K25(A)-36	2
76	33058002	cavity ring assem	内胆圈组件(K2)	1
77	33001002	the cover plate for back heating element	背部电热管挡板	1
78	33303027	rear heating element	背部电热管	1
79	33039001	side rack panel	导轨支架垫板	2
80	33035001	thermostat switch sensor fixer	温控开关探头固定夹	4
81	33016001	back bracket for cavity	内胆后支架	2

AMF90VSS2 Wiring diagram