



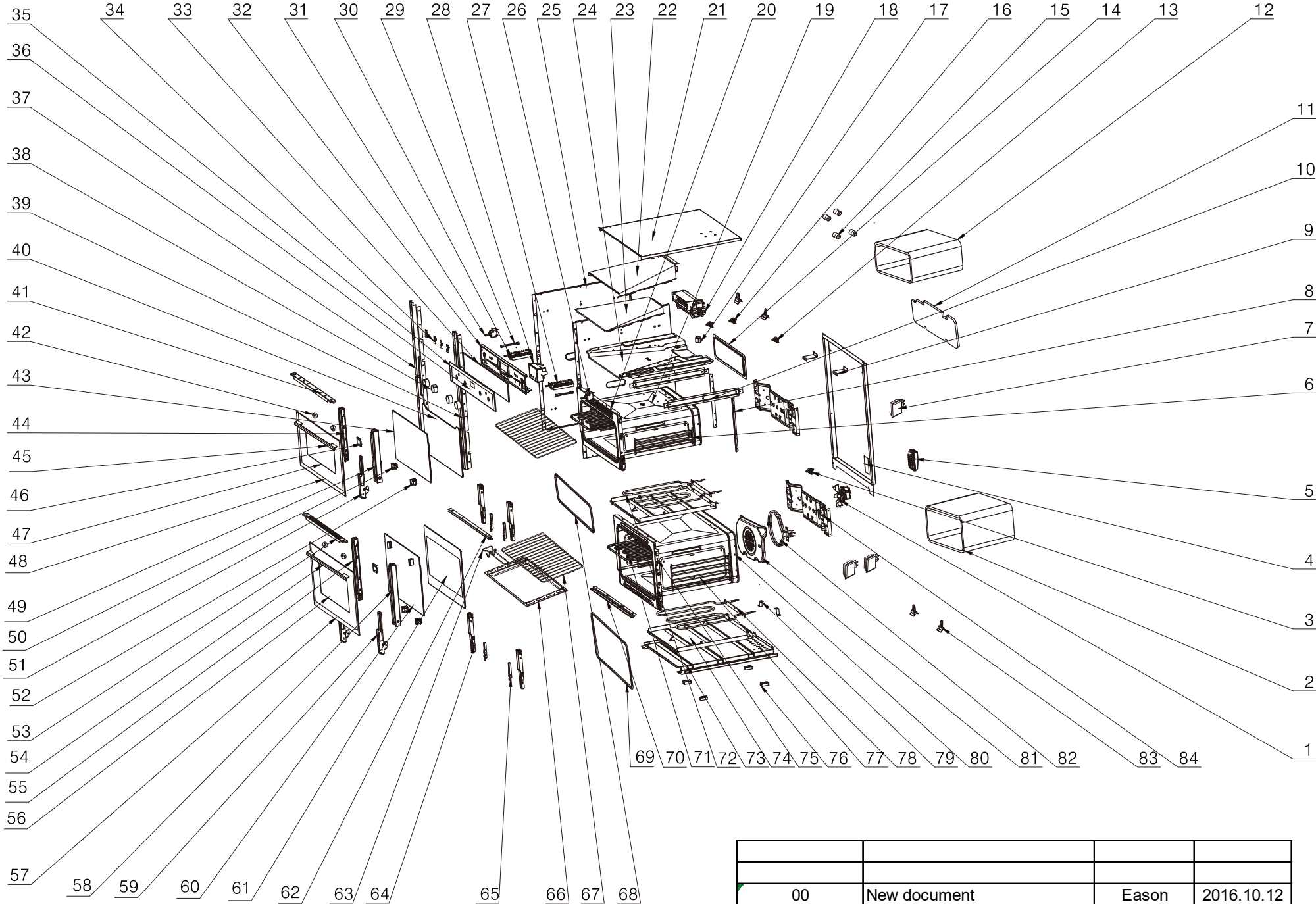
Double oven:UBMFTC903.1

Version:00

Date:2016-10-12

Product reference code: UBMFTC903.1

UBMFTC903.1 Exploded drawing



00	New document	Eason	2016.10.12
Index	Modify description	Modified by	Date

UBMFTC903.1 parts list

No.	part code	part name	Qty	chinese name
1	33315002	grill fan assembly	1	循环风机组件-(划一型号): HY6020V240H
2	33120002	heat preservation fibre	1	内胆圈保温纤维-1(16KG)
3	33308027	Thermostat	1	过热保护器-100℃
4	33030020	back cover board	1	外壳后盖板-AD-K25(B)-02
5	33305016	terminal box	1	接线盒-AD-K25(A)-22
6	33140011	side rack panel	2	左右导轨支架-AD-K25(B)-12
7	33317001	lamp	3	方灯组件
8	33027012	connect board for top and bottom cavity	2	上下内胆连接板-AD-K25(A)-11
9	33027014	fixing panel for exhausting pipe base board	2	排烟道底板固定板-AD-K25(A)-13
10	33026018	exhausting pipe base board connector plate	2	排烟道底板连接板
11	33121002	heat preservation fibre	1	内胆底盖保温纤维
12	33120002	heat preservation fibre	1	内胆圈保温纤维-1(16KG)
13	36154001	over heat protector100℃	1	温控器 SF1-068
14	33001037	rear catalyse board	1	背部易洁板-AD-K25(B)-07
15	33141002	guide rail bracket fixing axis	4	导轨支架固定轴-900*480烤箱
16	33310003	heat dissipation thermostat	2	散热温控器
17	33215013	exhausting pipe	1	排烟筒-AD-K25(B)-05
18	33313030	cooling fan assembly	1	散热风机组件(双排气)-AD-K25(A)-50
19	33058091	upper cavity assembly	1	内胆组件(上)-AD-K25(B)配方灯
20	33018113	cavity panel	1	内胆面板(上)-AD-K25(B)-20-01
21	33031014	top cover plate	1	外壳上盖板-AD-K25(A)-01
22	33028004	exhausting pipe top cover board	1	排烟道上盖板-自洁烤箱专用
23	33026004	exhausting pipe middle cover board	1	排烟道中盖板-自洁烤箱专用
24	33027002	exhausting pipe base board	1	排烟道底板-自洁烤箱专用
25	33033016	side plate (left&right)	2	外壳左右侧板-AD-K25(B)-01
26	33311007	temperature adjuster	1	温控开关-900*480烤箱专用
27	33301034	function switch	1	档位开关
28	33300061	sensor touch timer (3 button)	1	三键触摸定时器-蓝色
29	33312001	indicator light	2	指示灯
30	33301037	function switch	1	档位开关
31	33311018	temperature adjuster	1	温控开关-K25(A)-21
32	33018115	fixing panel for switch	1	开关面板固定板-AD-K25(A)-17
33	91034001	single adhesive tape	1	单面胶
34	33006001	connect board switch	4	开关面板连接板
35	33007165	decorate board switch	1	开关面板装饰板-PN-K1-55B (12mm翻边)
36	33101336	control panel assembly	1	开关面板(4功能-8功能)--AD-K25(B)-08A
37	33014088	left bracket for out cover plate	1	外壳左支架-AD-K25(B)-03
38	30402500031	knob-K21	4	
39	33014089	right bracket for out cover plate	1	外壳右支架-AD-K25(B)-04
40	33103045	inner glass(top door)	1	内玻璃-上-AD-K25(B)-10-02B
41	33014080	door frame top bracket	1	门上支架(前面开孔)-AD-K25(A)-10-01
42	33214005	handle fixing assem	4	拉手固定套-PN-K14-60-09
43	33104024	middle glass	1	中间玻璃-AD-K25(B)-10-07
44	33014080	door frame left bracket	1	门框左支架-AD-K25(B)-10-04
45	30400700002	handle-H1	1	
46	33006012	fixing board for handle	2	拉手固定板-PN-K13-20-07 (黑色亮光喷塑后)
47	33102520	door panel	1	门面板-418-AD-K25(B)-10-01(镀膜)
48	33015297	decorate board for door panel	1	门面板装饰板-AD-K25(B)
49	33014079	door frame right bracket	1	门框右支架-AD-K25(B)-10-05
50	33014049	fixing panel for inner glass	2	内玻璃左下固定块-PN-K15(A)-20-08
51	33180020	hinge 14	2	铰链组件-14号铰链
52	33014050	fixing panel for inner glass	2	内玻璃右下固定块-PN-K15(A)-20-09
53	33014043	top bracket for oven door	1	门上支架-PN-K15(A)-20-01
54	30400700002	handle-H1	1	
55	33014082	door frame left bracket	1	门框左支架-PN-K25(A)-10-03
56	33102207	decorate board for door panel	1	门面板-418-老门配418的拉手-镀膜
57	33015295	door panel	1	门面板装饰板-英国CATA (高465)
58	33014083	door frame right bracket	1	门框右支架-PN-K25(A)-10-04
59	33180009	hinge 3 assembly	2	铰链组件(三号铰链)
60	33104031	middle glass	1	中间玻璃-PN-K15(A)-20-05B
61	33103044	inner glass	1	内玻璃-下-AD-K25 (A)-20-01B
62	33027017	cavity panel connector	1	内胆面板连接板(前)-AD-K25(A)-09
63	33172001	handle for rack	1	搁架抓手
64	33024006	side bracket for cavity(left&right)	4	内胆左右支架-AD-K25(A)-05
65	33005014	fixing board for hinge	4	铰链固定板-AD-K25(A)-06
66	33224003	Tray-shallow	2	油脂收集盘(K1-08)-新工艺
67	33170001	grill rack	2	搁架
68	33803013	door seal assembly	1	门封条组件K25 (B)
69	33803002	door seal assembly	1	门封条组件-K1(A)
70	33027016	bottom support for cavity panel	1	内胆面板下支撑-AD-K25(A)-12
71	33303006	top heating element	2	顶层电热管
72	33303039	bottom heating element	1	底层电热管-PN-K14-08
73	33029015	bottom cover plate	1	外壳底板-AD-K25(A)-03
74	33003002	fixing board for bottom heating element	2	底层电热管固定板(K1)
75	33018111	cavity panel	1	内胆面板(下)-AD-K25(A)-40-01
76	33237030	the support for bottom cover plate	4	底板支撑块-PN-K24-08
77	33140001	side rack	2	导轨支架
78	33303002	bottom heating element	1	底层电热管
79	33237031	bottom cover plate	2	外壳底板加强板-AD-K25(A)-36
80	33058093	cavity ring assem	1	内胆圈组件(K2)-配双方灯
81	33001002	the cover plate for back heating element	1	背部电热管挡板-无旋转电机
82	33303027	rear heating element	1	背部电热管-三圈
83	33035001	thermostat switch sensor fixer	4	温控开关探头固定夹
84	33016001	back bracket for cavity	2	内胆后支架