



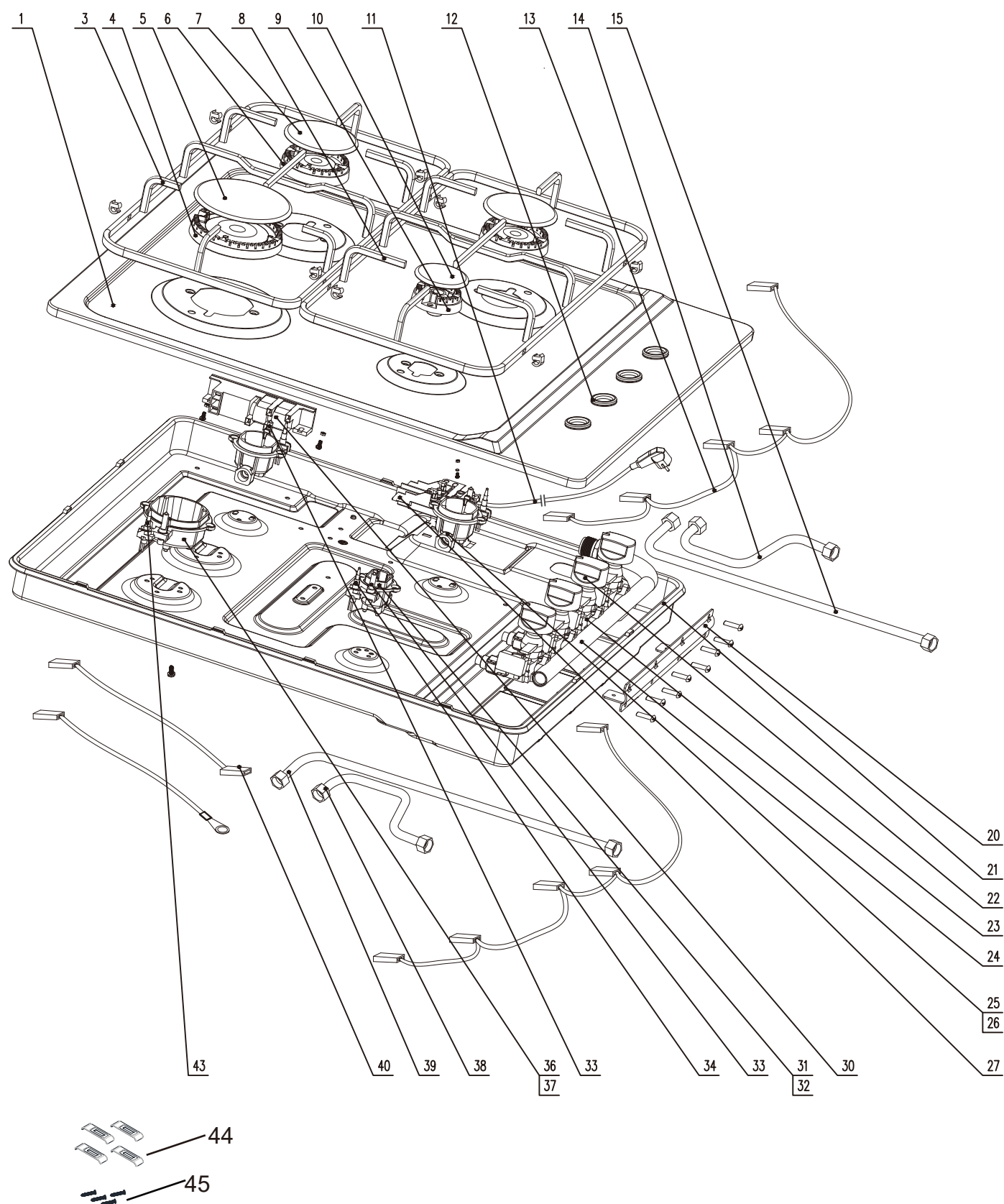
Gas Hob:UBGHMC60SS

Version:00

Date:2016-06-17

Product reference code: UBGHMC60SS

# UBGHMC60SS Exploded drawing



# UBGHMC60SS parts list

No.	Ref no.	Midea Part Code	Part name English	Part name Chinese	Qty
1	423229800496	12266200A00303	top plate	面板	1
2	423320400062	12666200000007	pan support rubber mat	锅支架胶垫	8
2	423320400071	12666200000001	pan support rubber mat	锅支架胶垫	2
3	423225500235	12366200000475	pan support components (left)	锅支架组件 (左)	1
4	261566800800	12971100001459	sprayer 2#	喷火器 2#	1
5	261566400100	12971100001437	burner cap 2#	火盖 2#	1
6	261566800900	12971100001461	sprayer 3#	喷火器 3#	2
7	261566400300	12971100001431	burner cap 3#	火盖 3#	2
8	423225500236	12366200000476	pan support components (right)	锅支架组件 (右)	1
9	261566801000	12971100001457	sprayer 4#	喷火器 4#	1
10	261566400200	12971100001427	burner cap 4#	火盖 4#	1
11	423020300045	17466200000001	power cord	电源线	1
12	423320400061	12666200000063	knob waterproof rubber ring	旋钮防水胶圈	4
13	423020400018	17466200000024	wire of Micro Switch	微动开关连接线	2
14	423226200371	12966200000564	aluminum gas tube (right front)	配气管组件 (右上)	1
15	423226200368	12966200000561	aluminum gas tube (right rear)	配气管组件 (右下)	1
24	423229200009	12966200000332	elbow	弯头	1
20	423229600252	12266200000854	valve bracket	阀体支架	1
21	423225600075	12266200000220	bottom plate	底壳	1
22	423320000056	12166200000028	knob components	旋钮组件	4
23-4	423225900787	12366200000204	flame-out protection valve 4#	阀体组件 4#	1
23-3	423225900788	12366200000205	flame-out protection valve 3#	阀体组件 3#	2
23-2	423225900789	12366200000189	flame-out protection valve 2#	阀体组件 2#	1
24	423226100193	12966200000041	inlet pipe components	进气管组件	1
25	291600600034	12971100001468	injector 3#	喷嘴 3#	2
26	291600100077	12971100001285	burner cup 3#	底杯 3#	2
27	423324000012	12166200000091	terminal box	接线盒	1
29	423320400074	12166200000089	Pulse Ignition Rubber Gaske	脉冲点火器垫片	1
30	423023200068	17466200000036	ignition box	脉冲点火器	1
31	291600600036	12971100001548	injector 4#	喷嘴 4#	1
32	291600100078	12971100001295	burner cup 4#	底杯 4#	1
33	261555604800	12971100001261	ignition needle components(220mm)	点火针(220mm)	1
33	291600200003	12971100001239	ignition needle components(600mm)	点火针(600mm)	3
34	423023100028	12966200000319	Thermocouple components(350mm)	热电偶(350mm)	2
36	291600600033	12971100001510	injector 2#	喷嘴 2#	1
37	291600100076	12971100001284	burner cup 2#	底杯 2#	1
38	423226200370	12966200000563	aluminum gas tube (left front)	配气管组件 左上	1
39	423226200369	12966200000562	aluminum gas tube (left rear)	配气管组件 左下	1
40	423020400017	17466200000023	connection wire	连接线	1
41	261520501101	12971100001131	Bottom plate bracket	底板固定夹	4
43	423023100029	12966200000320	Thermocouple components(500mm)	热电偶组件(500mm)	2
44	423229600165	12266200000582	fixing brackets	底壳固定片	4
45	424020100060	11303309000019	Screw M4*14	十字槽盘头自攻锁紧螺钉	4
Accessory	291600600038	12971100001511	injector 2# G30 mbar	喷嘴 2#底杯 G30 30mbar	1
	291600600037	12971100001499	injector 3# G30 mbar	喷嘴 3#底杯 G30 30mbar	2
	291600600035	12971100001514	injector 4# G30 mbar	喷嘴 4#底杯 G30 30mbar	1