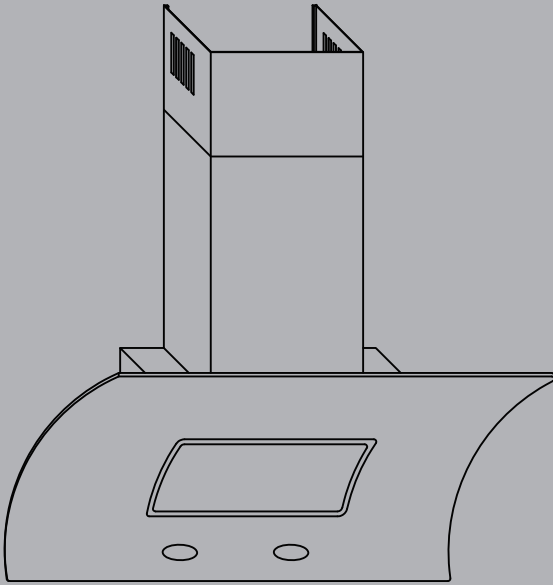


USER MANUAL



CURVA60/70/90, CURVA60/70/90BK
CURVED BLACK GLASS HOOD

CURVA60_70_90_IM_v3

Customer Care
0344 800 1128

IMPORTANT INFORMATION

CURVA60/70/90, CURVA60/70/90BK

CONTENTS

Important Information		Care and Maintenance	
Before you start	2	Active charcoal filter replacement	9
Safety information	3	Aluminium filters	9
Environment information	6	Active charcoal filters	9
Technical and legal information	6	Installation	10
Your hood		Trouble shooting	13
Your hood control panel	7	Information for EU66	14
First use/Setting up your oven		Useful contacts	15
Accessories not supplied	8		
Product function	8		

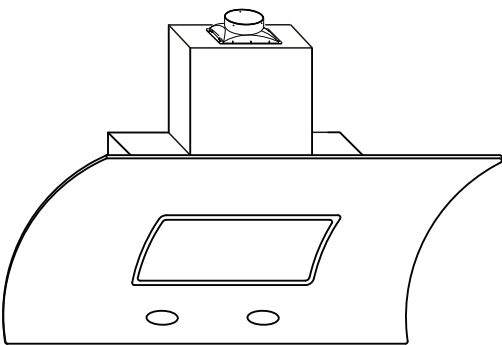
BEFORE YOU START

To avoid the risks that are always present when you use an electrical appliance it is important that this appliance is installed correctly and that you read the safety instructions carefully to avoid misuse and hazards. Please keep this instruction booklet for future reference and pass it on to any future owners. After unpacking the appliance please check that it is not damaged. If in doubt, do not use the appliance but contact Apelson on 0344 800 1128.

Decide on the appropriate location for your product.

Check the package and make sure you have all of the parts below.

CURVA60/70/90 Curved Black Glass Hood x1

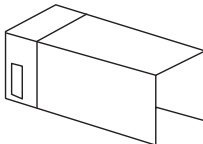


Your product contains glass please take care when fitting or handling to prevent personal injury or damage to the product.

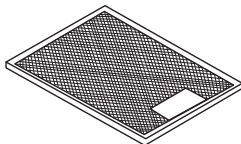
The specifications plate displays all the necessary identification information for ordering replacement parts.

If you sell the appliance, give it away, or leave it behind when you move house, make sure you also pass on this manual so that the new owner can become familiar with the appliance and its safety warnings.

Decorative chimney x1



Filter x1



Bracket x1



[01] Ø3.9x35mm x6



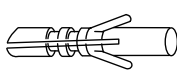
[02] Ø3.5x9.5mm x2



[03] Ø4x10mm x2



[04] Wall plug x6



[05] washer x6



SAFETY INFORMATION

These instructions are for your safety. Please read through them thoroughly prior to installation and retain them for future reference.

- All installation work must be carried out by a competent person or qualified electrician.
- This appliance must be installed correctly by a suitably qualified person, strictly following the manufacturer's instructions.
- This appliance complies with all current European safety legislation, however, the Manufacturer must emphasize that this compliance does not prevent the surfaces of the appliance from heating up during use and remaining hot during its operation.
- Accessible parts may become hot during use. Young children should be kept away. Care should be taken to avoid touching the appliance (e.g hob, cooker).
- The Manufacturer highly recommends that this appliance be kept out of the reach of babies and small children.
- This appliance can be used by children aged from 8 years and above and persons with reduced physical, sensory or mental capabilities or lack of experience and knowledge if they have been given supervision or instruction concerning use of the appliance in a safe way and understand the hazards involved. Children shall not play with the appliance. Cleaning and user maintenance shall not be made by children unless they are older than 8 and supervised.
- Keep the appliance and its cord out of reach of children less than 8 years.
- Means for disconnection must be incorporated in the fixed wiring in accordance with the wiring rules. An all-pole disconnection switch having a contact separation of at least 3mm in all poles should be connected in fixed wiring.

IMPORTANT INFORMATION

CURVA60/70/90, CURVA60/70/90BK

- Regularly check the power plug and power cord for damage. If the supply cord is damaged, it must be replaced by the manufacturer, its service agent or similarly qualified persons in order to avoid a hazard.
- Do not allow the electric cables to touch the hot parts of the appliance.
- Make sure that the power cord is not caught under or in the appliance and avoid damage to the power cable.
- Do not install the appliance outdoors in a damp place or in an area which may be prone to water leaks such as under or near a sink unit. In the event of a water leak allow the machine to dry naturally.
- Do not use flammable sprays in close vicinity to the appliance.
- We also recommend that great care be taken during use and cleaning. Read the cleaning and maintenance sections for this appliance carefully.
- A steam cleaner is not to be used.
- The appliance is not intended to be operated by means of external timer or separated remote-control system.
- The appliance is for domestic use only.

Warning: Consult local regulations regarding fumes outlets. Do not connect the hood to a fume, ventilation or hot air duct. Confirm that room ventilation is appropriate with the local authorities. Make sure the maximum air extraction flow rate for the appliances in the room does not exceed 4 Pa (0.04 mbar). The room must have adequate ventilation if an extractor hood is used simultaneously with appliances that run on gas or other fuels. The air must not be discharged into a flue that is used for exhausting fumes from appliances burning gas or other fuels. Regulations regarding air extraction must be complied with.

Warning: Before connecting the hood: switch off the electricity supply and check that the supplied voltage and frequency coincide with that indicated on the appliance nameplate.

Warning: The hood may stop working during an electrostatic discharge (e.g. lightning). This involves no risk of damage. Switch off the electricity supply to the hood and reconnect after one minute.

- To avoid the risk of fire, clean the metal filter regularly and closely watch and regulate pans containing hot oil.
- Do not use the hood if it shows signs of damage or imperfection. Contact customer services.
- Flammable cooking must not be carried out underneath this appliance.
- When installing the appliance, make sure that the following distances between the top of cooker or hob and the lowest part of the cooker hood must be observed:
 - > Gas hobs: 350mm
 - > Electric hobs: 350mm
- The Manufacturer declines all liability for personal or material damage as a result of misuse or incorrect installation of this appliance.

Warning: There is a risk of electric shock and fire if cleaning is not carried out in accordance with the instructions.

IMPORTANT INFORMATION

CURVA60/70/90, CURVA60/70/90BK

ENVIRONMENTAL INFORMATION

Waste electrical products should not be disposed of with household waste. Please recycle where facilities exist. Check with your Local Authority or retailer for recycling advice.



This symbol on the product or its packaging indicates that this product cannot be treated as normal household waste. This product must be handed over to an electric and electronic equipment collection point for recycling.

On ensuring that this product is disposed of correctly, you will help to avoid possible negative consequences for the environment and public health, which could occur if this product is not handled correctly. To receive more detailed information about recycling this product, contact your local government, domestic waste disposal services or the outlet where the product was bought.

TECHNICAL AND LEGAL INFORMATION

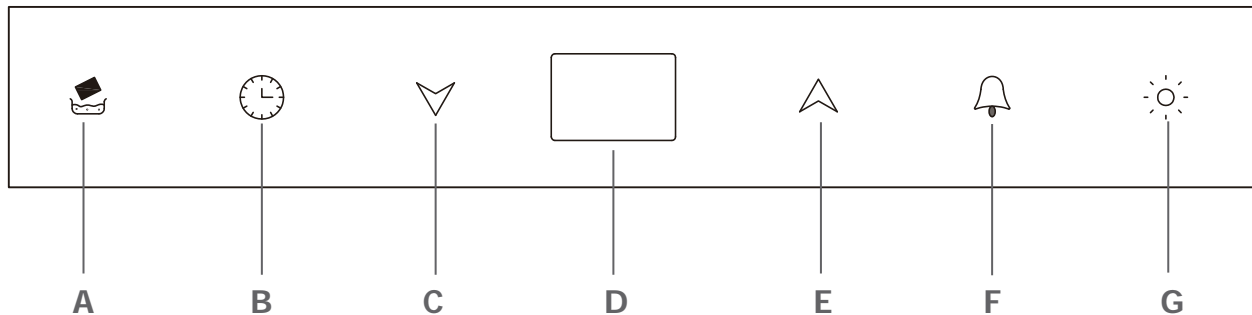
TECHNICAL INFORMATION:

Power supply:	220-240V~, 50Hz
Power consumption - Fan:	198W
Power consumption - Light:	2x 20W Max.
Power consumption - Total:	238W
Light bulb:	Max. 20W (Halogen)

LEGAL INFORMATION

The Manufacturer declines all liability for damage caused to persons and objects due to incorrect or improper installation of the appliance.

YOUR HOOD CONTROL PANEL



- A.** Filter cleaning alert indicator/switch. Icon will flash when you need to clean the aluminium grease filters and can be deactivated with a single press.
Clock setting. Press icon to turn on the LED display and then press icon for 3 seconds, the clock will be on and the minute time will flash then press icon and icon to adjust the minute time, press icon to confirm the minute time, then the hour time will flash then press icon and icon to adjust the hour time, the clock time is confirmed after 3 seconds. The max clock setting time is 23:59.
- B.** Control for setting the timer of motor. When the motor is on, press icon to turn on the timer and the minute time will flash then press icon and icon to adjust the minute time, press icon to confirm the minute time, then the hour time will flash then press icon and icon to adjust the hour time, the timer time is confirmed after 3 seconds. The max setting time is 9:59. The extractor will operate at current speed for the duration set on the timer.
- C.** Extractor fan speed and time "-" control.
- D.** Digital display
- E.** Extractor fan speed and time "+" control.
- F.** Alarm on and off. Press icon to turn on alarm and the minute time will flash then press icon and icon to adjust the minute time, press icon to confirm the minute time, then the hour time will flash then press icon and icon to adjust the hour time, the alarm time is confirmed after 3 seconds. The max setting time is 9:59.
Press icon for 3 seconds can cancel the alarm setting.
- G.** Lighting on and off.

FIRST USE/SETTING UP YOUR HOOD

CURVA60/70/90, CURVA60/70/90BK

We recommend that you read the instructions in this owner's manual carefully before use for the best performance and to extend the life of your appliance, as it will provide you with all the instructions you require to ensure its safe installation, use and maintenance. Always keep this owner's manual close to hand since you may need to refer to it in the future.

Thank you.

ACCESSORIES NOT SUPPLIED

You will need to supply the following items to complete your installation and be able to use your cooker hood.

A vent pack with a Ø150mm hose and self adhesive aluminum tape.

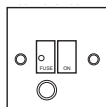
PRODUCT FUNCTION

This appliance extracts the air of the kitchen to remove the odours and keep an optimum level of the air quality inside the room, it also allows you to illuminate the cooking area.

To obtain the best results from your cooker hood it is recommended that you leave it switched on for 15 minutes after you have finished cooking.

WARNING

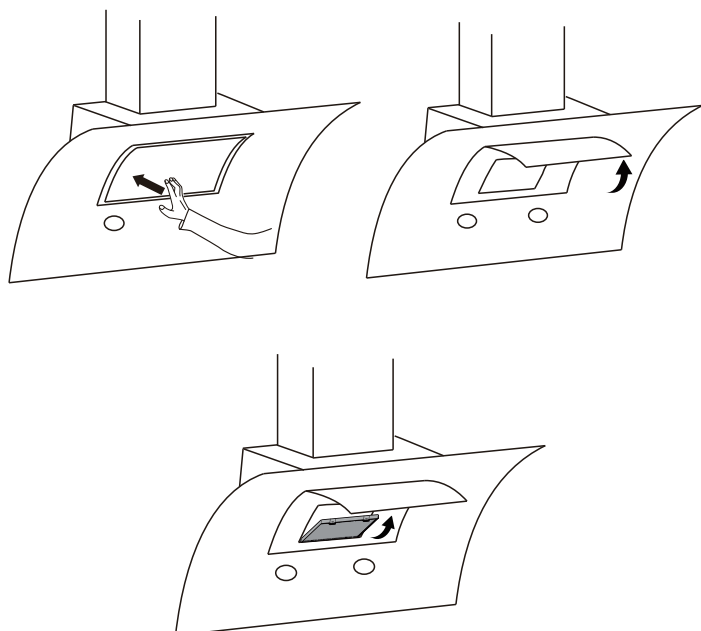
Always switch off the electricity supply before performing maintenance work. In the event of a fault, contact customer services.



CAUTION

Do not use hot water, dilutents, petrol, alcohol, kerosene, washing powder, cleanser, alkaline detergent, acid, chemical cloth, etc. for cleaning so as not to damage the enamel coating and plastic. The appliance must not be cleaned directly with water as this could cause rusting or render the insulation less efficient

ACTIVE CHARCOAL FILTER REPLACEMENT:



ALUMINIUM FILTERS

Exterior cleaning: use non-corrosive, liquid detergent and avoid the use of abrasive cleaning products.

To avoid fires, clean thoroughly once a month. To do so, remove the filters and wash with hot water and detergent. If using a dishwasher, position the filters vertically to improve the cleaning process.

ACTIVE CHARCOAL FILTERS

Replace every 3 months.

IMPORTANT

Increase the filter cleaning/replacement frequency if the hood is used for more than 2 hours a day. Always use genuine filters from the manufacturer.

INSTALLATION

CURVA60/70/90, CURVA60/70/90BK

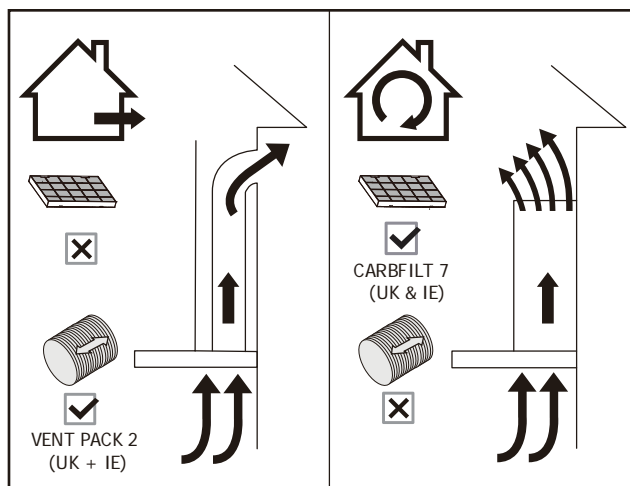
Only a qualified person in compliance with the instructions provided must install the appliance. The manufacturer declines all responsibility for improper installation, which may harm persons and animals and damage property.

CAUTION

The power supply to the appliance must be switched off before any adjustments or maintenance work is undertaken.

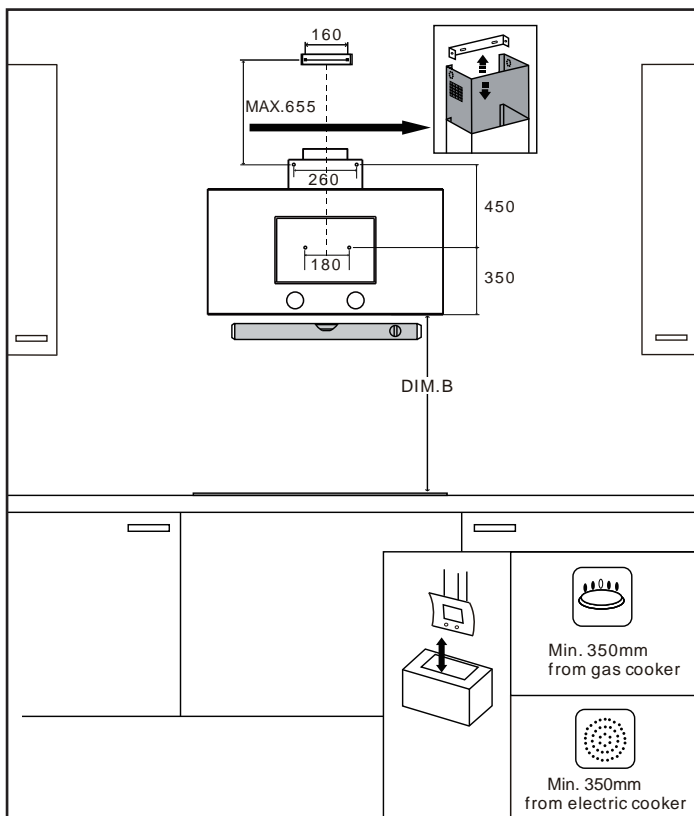
You can choose two type of installation:

- Ducted option
- Recirculation option



Ducted option

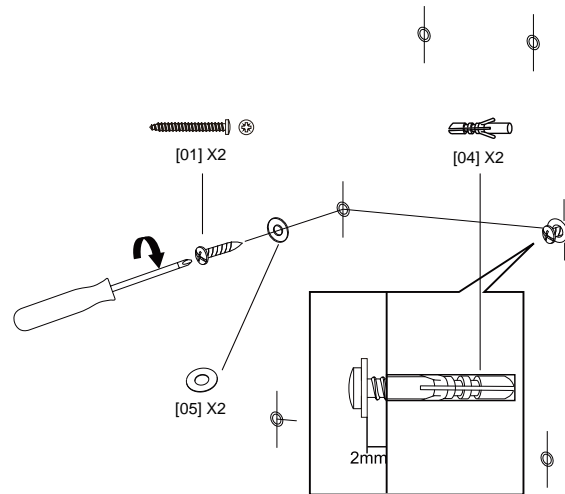
Recirculation option



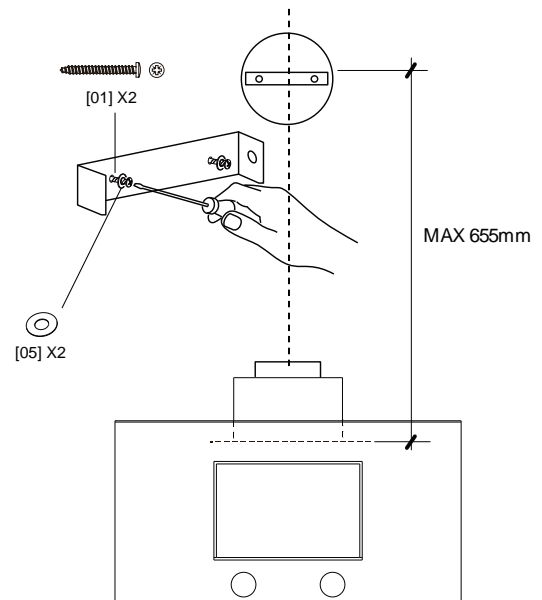
Mark on the wall the hole positions as shown in diagram.

CAUTION

The Wall Plugs supplied are suitable for solid walls only. When fixing to any other type of wall use suitable alternative fixings



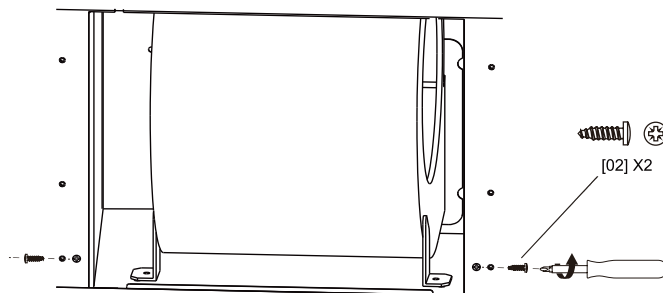
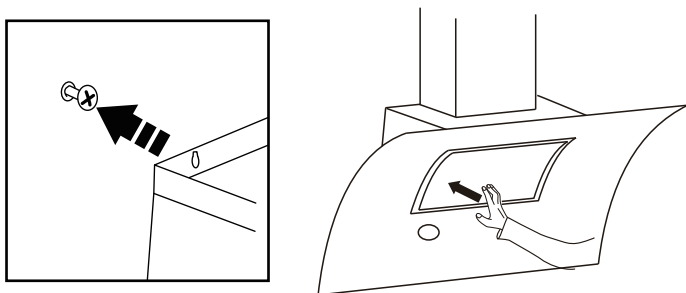
Drill six holes, and then insert the wall plugs in all the holes. Now insert long screws with washers in the middle two holes. Maximum gap between top two holes and middle two holes should be no more than 655mm, depending on the ceiling height.



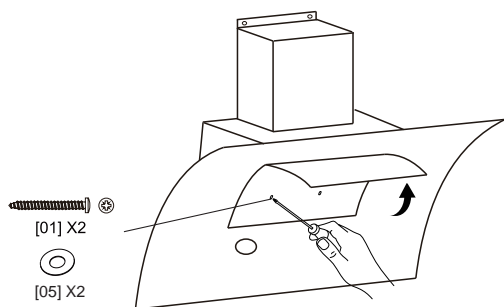
Fix the top bracket to the wall using two long screws and washers.

INSTALLATION

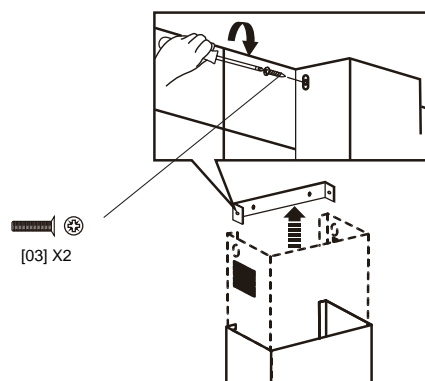
CURVA60/70/90, CURVA60/70/90BK



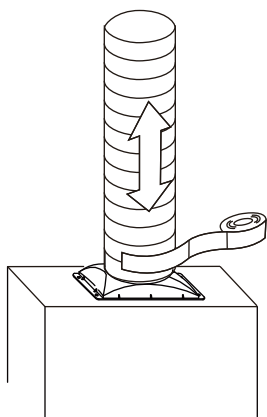
Fix the lower decorative chimney using two screws.



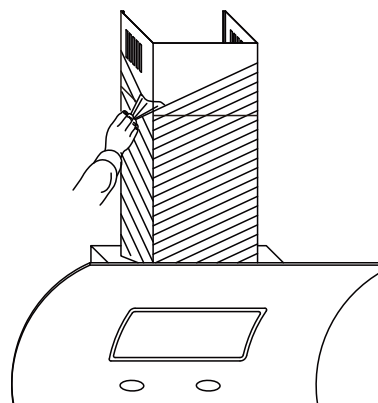
Position the hood over the top two screws then insert the bottom long screws and washers from inside the hood, tighten top two screws to secure then fix inner decorative glass.



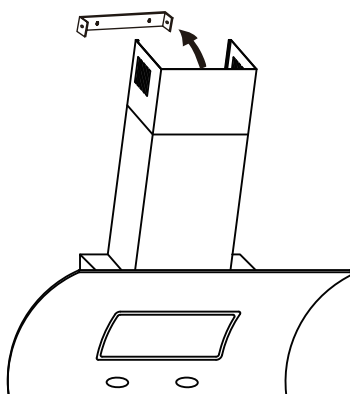
Fix the decorative chimney to the bracket. Connect top of the vent pack to vent kit.



Fix the vent pack using self adhesive aluminum tape.



Remove the protector film.



Attach the decorative chimney to the main unit.

INSTALLATION

CURVA60/70/90, CURVA60/70/90BK

ELECTRICAL REQUIREMENTS

Any permanent electrical installation must comply with the latest I.E.E. Regulations and local electricity company regulations. For your own safety a qualified electrician or contractor who is on the roll of the National Inspection Council for Electrical Installation Contracting (NICEIC) should undertake the electrical installation.

ELECTRICAL CONNECTION

Before connecting the mains supply ensure that the mains voltage corresponds to the voltage on the rating plate inside the appliance.

WARNING: THIS APPLIANCE MUST BE EARTHED

The appliance is supplied with a 3-core mains cable and must be connected to the electricity supply via a double pole switch having a 3mm minimum contact gap on each connector.

A Switched Fused Connection Unit to BS 1363 Part 4 is recommended.

The fuse must be rated at 3 Amps.

The wires in the mains lead are coloured in accordance with the following code:

Brown = L - Live

Blue = N - Neutral

Green and Yellow = ⊕ - Earth

The connection point must be placed in a position adjacent to the appliance so as to be readily accessible for an engineer in the event of a breakdown.

Disconnect the appliance from the mains supply before carrying out any kind of maintenance or cleaning.

THE APPLIANCE IS NOW READY TO USE.

TROUBLESHOOTING

CURVA60/70/90, CURVA60/70/90BK

FAULT	CAUSE	SOLUTION
Hood doesn't work	No power supply	Check the plug
		Check the main switch
Poor airflow	Aluminium grease filters are dirty.	Clean the filters
	Charcoal filters are dirty	Replace the charcoal filters
Motor running, but no airflow	Butterfly valve jammed	Contact customer service.
After running for a while, motor stop working	High temperature safety device activated	Ensure that the vent kit is fitted to the manufactures instructions
	Distance between the cooker hood and the hob is too small	Readjust the distance to: Gas hobs:350mm Electric hobs:350mm
Works normally but cooking smells linger	Charcoal filter not fitted in recirculation mode or charcoal filter is full of grease	Fit charcoal filter if recirculating or change the filter
Whirring sound	Fan blade problem	Contact customer service.

INFORMATION FOR EU66

CURVA60/70/90, CURVA60/70/90BK

(A) Information of the cooker Hood

	Symbol	Value	Unit
Model identification		CURVA60, CURVA70, CURVA90 CURVA60BK, CURVA70BK, CURVA90BK	
Annual Energy Consumption	AEC_{hood}	89.6	kWh/a
Time increase factor	f	1.6	
Fluid Dynamic Efficiency	FDE_{hood}	11.8	
Energy Efficiency Index	EEl_{hood}	94.3	
Measured air flow rate at best efficiency point	Q_{BEP}	200.9	m ³ /h
Measured air pressure at best efficiency point	P_{BEP}	222	Pa
Maximum air flow	Q_{max}	395.6	m ³ /h
Measured electric power input at best efficiency point	W_{BEP}	105.1	W
Nominal power of the lighting system	W_L	40.0	W
Average illumination of the lighting system on the cooking surface	E_{middle}	200	lux
Measured power consumption in standby mode	P_s	—	W
Measured power consumption off mode	P_o	0.42	W
Sound power level	L_{WA}	Max. 70 / Min. 53	dB

The measurement and calculation method of the above table was done in accordance with commission regulation (EU) No 65/2014 & 66/2014.

(B) The following shows how to reduce total environmental impact (e.g. energy use) of the cooking process.

- (1) Install the cooker hood in a proper place where there is efficient ventilation.
- (2) Clean the cooker hood regularly so as not to block the airway.
- (3) Remember to switch off the cooker hood light after cooking.
- (4) Remember to switch off the cooker hood after cooking.

(C) Information for dismantling.

Do not dismantle the appliance in a way which is not shown in the user manual. The appliance could not be dismantled by user. At the end of life, the appliance should not be disposed of with household waste. Check with you Local Authority or retainer for recycling advice.

USEFUL CONTACTS

TECHNICAL SUPPORT

Apelson Appliances UK LTD

Phone: 0344 800 1128

Email: uksupport@apelson.co.uk

Web: www.spareszone.co.uk

SPARES

Apelson Appliances UK LTD

Phone: 0344 800 1128

Email: uksupport@apelson.co.uk

Web: www.spareszone.co.uk

SERVICE AND GUARANTEE

Apelson Appliances UK LTD

Phone: 0344 800 1128

Email: uksupport@apelson.co.uk

Web: www.spareszone.co.uk

APELSON APPLIANCES UK LTD
Unit 3 Normandy Landings
Pope St
Castleford
WF6 2AG