

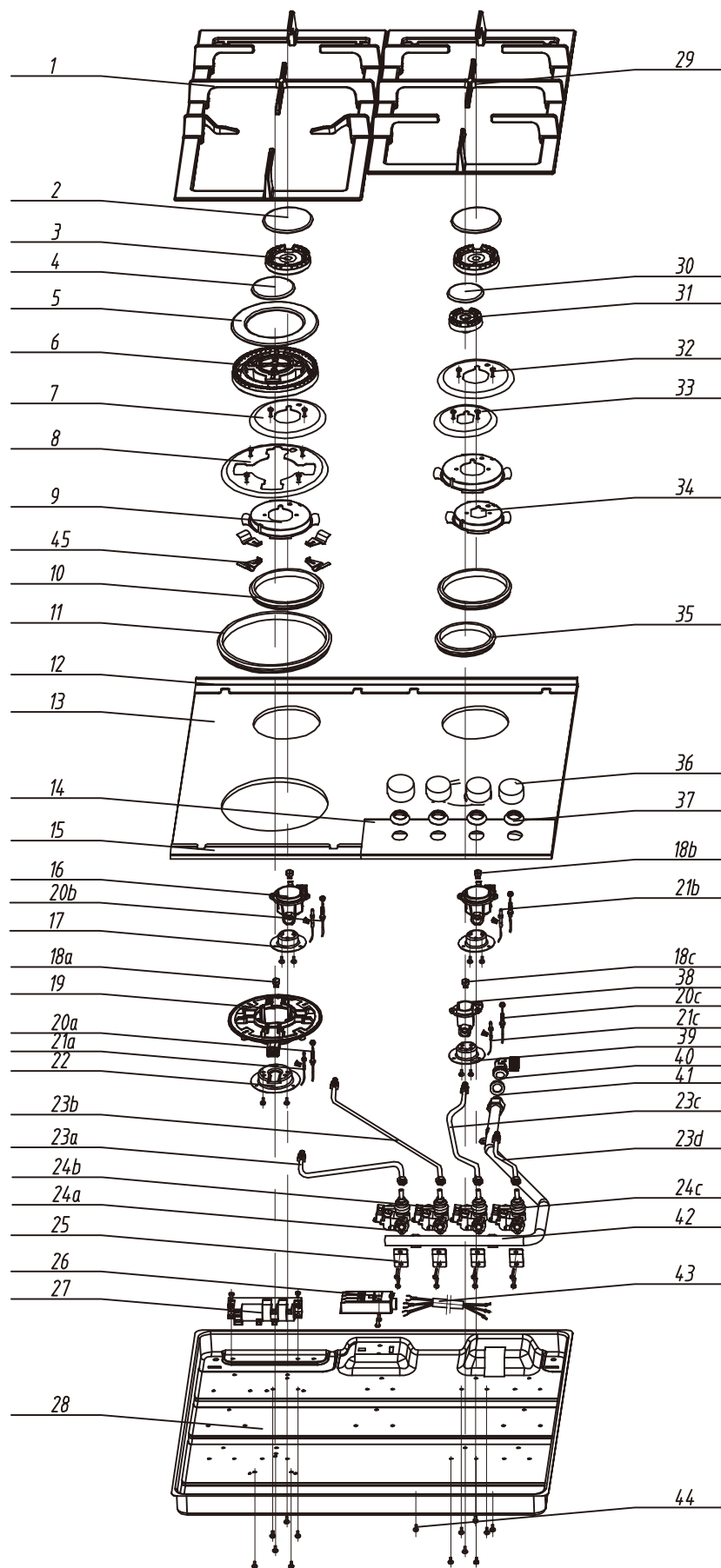


Glass Gas Hob:UBGHD60GG

Version:00

Date:2014-05-22

UBGHD60GG Exploded drawing



00	New document	Eason	2014. 5. 22
Index	Modify description	Modified by	Date

UBGHD60GG parts list

NO.	Part code	Part description	Quantity
.1	32248044	iron casting pan supporter(left)	1
.2	32213006	Semi rapid burner cap (Italy)	2
.3	32222003	Semi rapid aluminum burner cap-(Italy)	2
.4	32210009	Triple burner cap (inner) - (Italy II)	1
.5	32211009	Triple burner cap (outer) - (Italy II)	1
.6	32220014	Triple aluminium cap (Italy II)	1
.7	32233044	semi rapid - Vitreous enamel decorative circle	2
.8	32233042	Triple - Vitreous enamel decorative circle	1
.9	32101036	semi rapid - locating ring	2
.10	32121008	semi rapid - waterproof ring	2
.11	32121007	Triple - waterproof ring	1
.12	32257027	Decorating plate(rear)	1
.13	32171458	Glass panel	1
.14	32257025	Decorating panel (front)	1
.15	32257026	Decorating plate (front)	1
.16	32202004	Semi rapid burner (Italy)	2
.17	32242005	Semi rapid tray	2
.18a	32191006	Triple nozzle	1
18b	32191002	Semi rapid nozzle	2
18c	32191005	Auxiliary nozzle	1
19	32200005	Triple burner (Italy)	1
20a	32312015	Triple - thermocouple	1
20b	32312005	Semi rapid - thermocouple	2
20c	32312004	Auxiliary - thermocouple	1
21a	32300015	Triple spark pin	1
21b	32300006	semi rapid spark pin	1
21c	32300007	Auxiliary spark pin	2
22	32242003	Triple tray	1
23a	32164283	gas tube A	1
23b	32164213	gas tube B	1
23c	32164212	gas tube C	1
23d	32164211	gas tube D	1
24a	32113013	valve(0.65)	1
24b	32113028	valve(0.35)	2
24c	32113027	valve(0.27)	1
25	32001012	holder	4
26	32311013	Power box	1
27	32304004	Ignition impulse device	1
28	32002070	Chassis plate	1
29	32248043	iron casting pan supporter(right)	1
30	32212009	Auxiliary burner cap (Italy)	1
31	32221001	Auxiliary aluminium burner cap - (Italy)	1
32	20106028	screw-inox (M4 x 10)	10
33	32233045	Auxiliary - Vitreous enamel decorative circle	1
34	32101037	Auxiliary - locating ring	1
35	32121009	Auxiliary - waterproof ring	1
36	32244031	K21 Knob	4
37	32120003	waterproof ring	4
38	32201001	Auxiliary burner (Italy)	1
39	32242004	Auxiliary tray	1
40	32243006	90° connection elbow	1
41	32258016	sealing washer	1
42	32160159	gas intake tube	1
43	32307004	Power cord	1
44	20105004	screw(ST4 x 8)	7
45	32101034	Triple locating plate	4