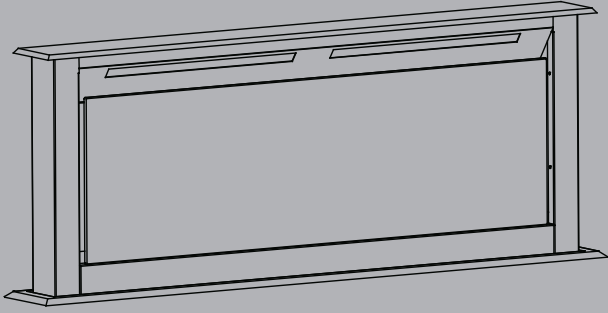


myappliances

USER MANUAL



ART10214
DOWN-DRAFT HOOD

Customer Care
0344 800 1128

IMPORTANT INFORMATION

CONTENTS

Important Information		Care and Maintenance	
Before you start	2	Metal filter replacement	7
Safety information	3	Aluminium filters	7
Environment information	4	Installation	8
Technical and legal information	4	Trouble shooting	11
Your hood		Guarantee	12
Your hood control panel	5	Useful contacts	13
First use/Setting up your oven			
Accessories not supplied	6		
Product function	6		

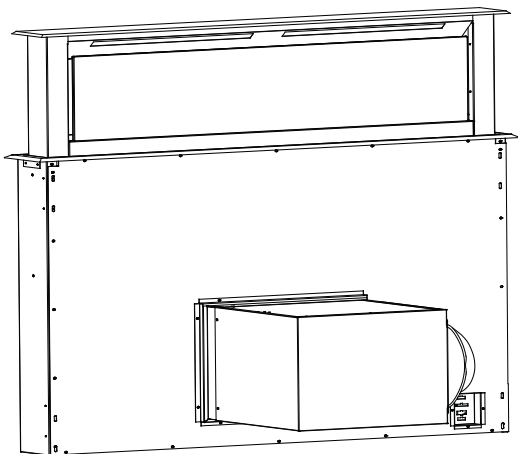
BEFORE YOU START

To avoid the risks that are always present when you use an electrical appliance it is important that this appliance is installed correctly and that you read the safety instructions carefully to avoid misuse and hazards. Please keep this instruction booklet for future reference and pass it on to any future owners. After unpacking the appliance please check that it is not damaged. If in doubt, do not use the appliance but contact Apelson on 0844 800 1128.

Decide on the appropriate location for your product.

Check the package and make sure you have all of the parts below.

DDCH90SS Down-draft Hood x1

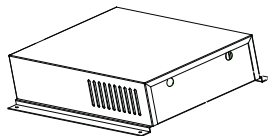


Your product contains glass please take care when fitting or handling to prevent personal injury or damage to the product.

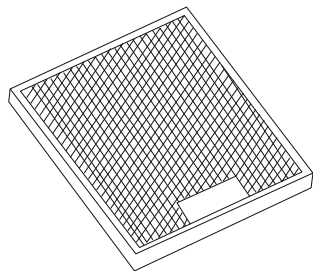
The specifications plate displays all the necessary identification information for ordering replacement parts.

If you sell the appliance, give it away, or leave it behind when you move house, make sure you also pass on this manual so that the new owner can become familiar with the appliance and its safety warnings.

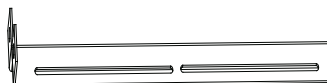
Power box x1



Filter x2



Cover x4



Decorative glass x1



Fixing screw Ø3.5x16mm x8



Fixing screw Ø3.5x9.5mm x12



SAFETY INFORMATION

These instructions are for your safety. Please read through them thoroughly prior to installation and retain them for future reference.

All installation work must be carried out by a competent person or qualified electrician.

This appliance must be installed correctly by a suitably qualified person, strictly following the manufacturer's instructions.

This appliance complies with all current European safety legislation, however, the Manufacturer must emphasise that this compliance does not prevent the surfaces of the appliance from heating up during use and remaining hot during its operation.

Accessible parts may become hot during use. Young children should be kept away. Care should be taken to avoid touching the appliance (e.g hob, cooker).

The Manufacturer highly recommends that this appliance be kept out of the reach of babies and small children.

Children should be supervised to ensure that they do not play with the appliance.

This appliance is not intended for use by persons (including children) with reduced physical sensory, or mental capabilities, or by those who lack experience and knowledge, unless they have been given supervision and instruction concerning the use of the appliance by a person responsible for their safety.

Means for disconnection must be incorporated in the fixed wiring in accordance with the wiring rules. An all-pole disconnection switch having a contact separation of at least 3 mm in all poles should be connected in fixed wiring.

Do not allow the electric cables to touch the hot parts of the appliance.

Make sure that the power cord is not caught under or in the appliance and avoid damage to the power cable.

Do not install the appliance outdoors in a damp place or in an area which may be prone to water leaks such as under or near a sink unit. In the event of a water leak allow the machine to dry naturally.

Please dispose of the packing material carefully.

Do not use flammable sprays in close vicinity to the appliance.

We also recommend that great care be taken during use and cleaning. Read the cleaning and maintenance sections for this appliance carefully.

A steam cleaner is not to be used.

The appliance is not intended to be operated by means of

external timer or separated remote-control system.

The appliance is for domestic use only.

Consult local regulations regarding fumes outlets. Do not connect the hood to a fume, ventilation or hot air duct. Confirm that room ventilation is appropriate with the local authorities. Make sure the maximum air extraction flow rate for the appliances in the room does not exceed 4 Pa (0.04 mbar). The room must have adequate ventilation if an extractor hood is used simultaneously with appliances that run on gas or other fuels. The air must not be discharged into a flue that is used for exhausting fumes from appliances burning gas or other fuels. Regulations regarding air extraction must be complied with.

Before connecting the hood: switch off the electricity supply and check that the supplied voltage and frequency coincide with that indicated on the appliance nameplate.

The hood may stop working during an electrostatic discharge (e.g. lightning). This involves no risk of damage. Switch off the electricity supply to the hood and reconnect after one minute.

This appliance is not intended to be used with gas hobs.

To avoid the risk of fire, clean the metal filter regularly and closely watch and regulate pans containing hot oil.

Do not use the hood if it shows signs of damage or imperfection. Contact customer services.

Flammable cooking must not be carried out underneath this appliance.

The Manufacturer declines all liability for personal or material damage as a result of misuse or incorrect installation of this appliance.

IMPORTANT INFORMATION

ENVIRONMENTAL INFORMATION

Waste electrical products should not be disposed of with household waste. Please recycle where facilities exist. Check with your Local Authority or retailer for recycling advice.



This symbol on the product or its packaging indicates that this product cannot be treated as normal household waste. This product must be handed over to an electric and electronic equipment collection point for recycling.

On ensuring that this product is disposed of correctly, you will help to avoid possible negative consequences for the environment and public health, which could occur if this product is not handled correctly. To receive more detailed information about recycling this product, contact your local government, domestic waste disposal services or the outlet where the product was bought.

TECHNICAL AND LEGAL INFORMATION

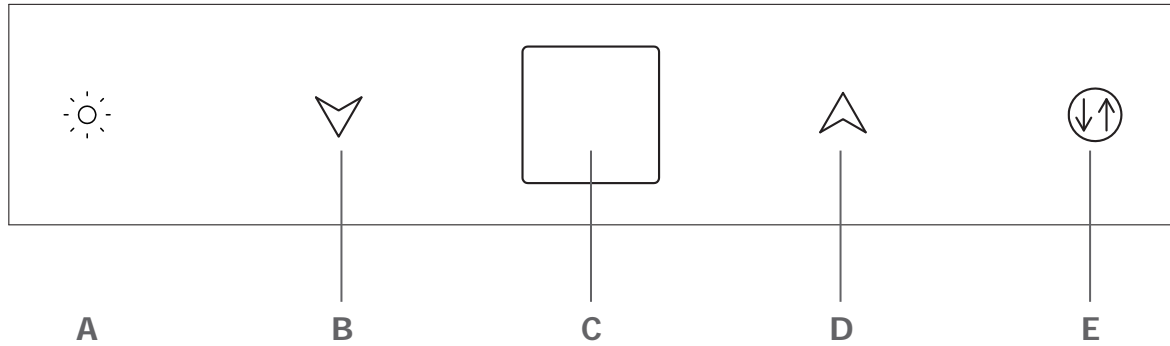
TECHNICAL INFORMATION:

Power supply:	220-240V~, 50Hz
Power consumption - Fan:	198W
Power consumption - Light:	2x 1.5W Max.
Power consumption - Total:	201W
Light bulb:	Max. 1.5W (LED)

LEGAL INFORMATION

The Manufacturer declines all liability for damage caused to persons and objects due to incorrect or improper installation of the appliance.

YOUR HOOD CONTROL PANEL



- A.** Light on and off
- B.** Extractor fan speed '-' button
- C.** Digital display
- D.** Extractor fan speed '+' button
- E.** Lift button: press it for 1.5 seconds, the extraction outlet will lift or go down depending on the starting position

FIRST USE/SETTING UP YOUR HOOD

We recommend that you read the instructions in this owner's manual carefully before use for the best performance and to extend the life of your appliance, as it will provide you with all the instructions you require to ensure its safe installation, use and maintenance. Always keep this owner's manual close to hand since you may need to refer to it in the future.

Thank you.

ACCESSORIES NOT SUPPLIED

You will need to supply the following items to complete your installation and be able to use your down-draft hood.

A vent pack with a Ø150mm hose and self adhesive aluminum tape.

PRODUCT FUNCTION

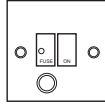
This appliance extracts the air of the kitchen to remove the odours and keep an optimum level of the air quality inside the room, it also allows you to illuminate the cooking area.

To obtain the best results from your cooker hood it is recommended that you leave it switched on for 15 minutes after you have finished cooking.

CARE AND MAINTENANCE

WARNING

Always switch off the electricity supply before performing maintenance work. In the event of a fault, contact customer services.



CAUTION

Do not use hot water, dilutents, petrol, alcohol, kerosene, washing powder, cleanser, alkaline detergent, acid, chemical cloth, etc. for cleaning so as not to damage the enamel coating and plastic. The appliance must not be cleaned directly with water as this could cause rusting or render the insulation less efficient

METAL FILTER REPLACEMENT:

Exterior cleaning: use non-corrosive, liquid detergent and avoid the use of abrasive cleaning products.

ALUMINIUM FILTERS

To avoid fires, clean thoroughly once a month. To do so, remove the filters and wash with hot water and detergent. If using a dishwasher, position the filters vertically to improve the cleaning process.

IMPORTANT

Increase the filter cleaning/replacement frequency if the hood is used for more than 2 hours a day. Always use genuine filters from the manufacturer.

INSTALLATION

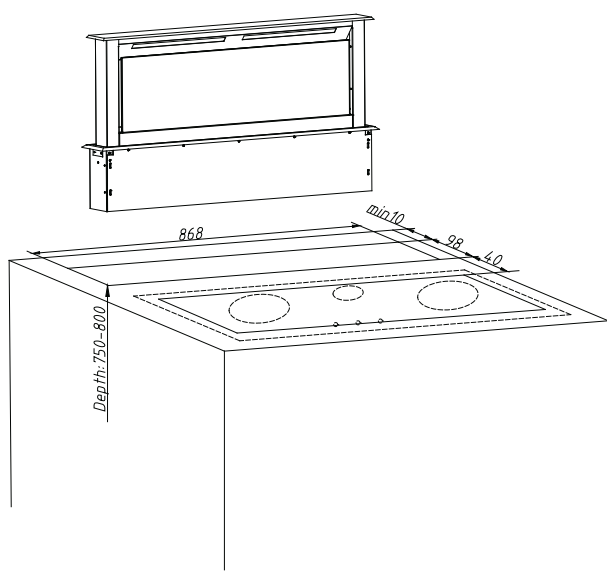
Only a qualified person in compliance with the instructions provided must install the appliance. The manufacturer declines all responsibility for improper installation, which may harm persons and animals and damage property.

CAUTION

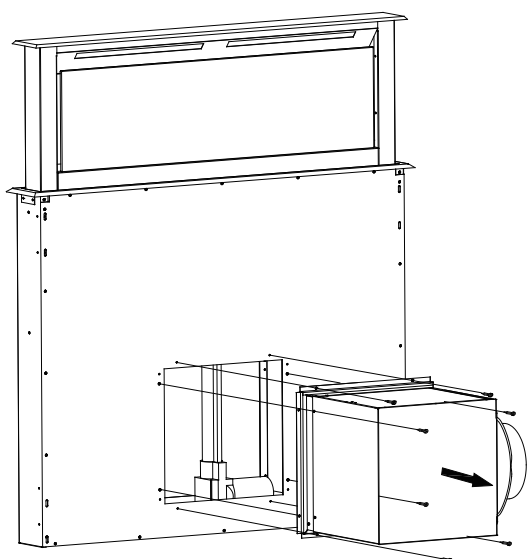
The power supply to the appliance must be switched off before any adjustments or maintenance work is undertaken.

You can only choose the ducted option as the type of installation for this product.

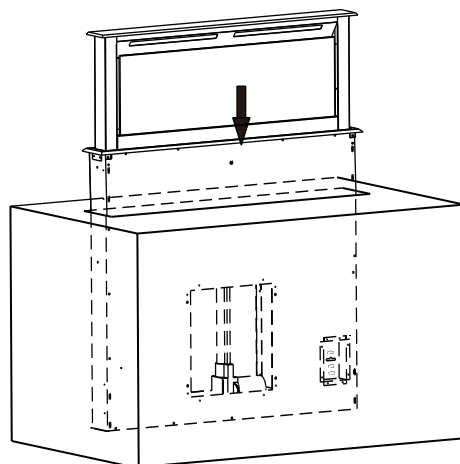
Mark and open the mounting holes on the cabinet as shown below.



Unscrew the eight screws fixing the wind chamber and put it aside.



Insert the hood body into cabinet slowly.



Remove the eight screws shown in Fig. 1, then re-insert the eight screws into the bracket and 8 screws provided into the side of the hood as shown in Fig. 2.

IMPORTANT

Do not need to fix the top two brackets if the cabinet is not wood based .

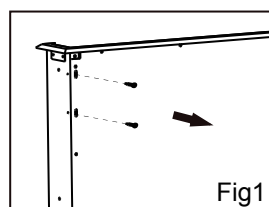


Fig1

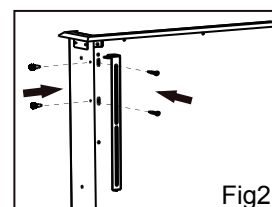
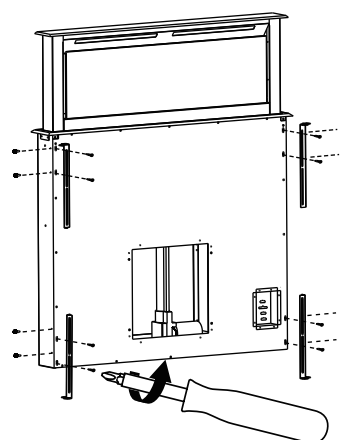


Fig2

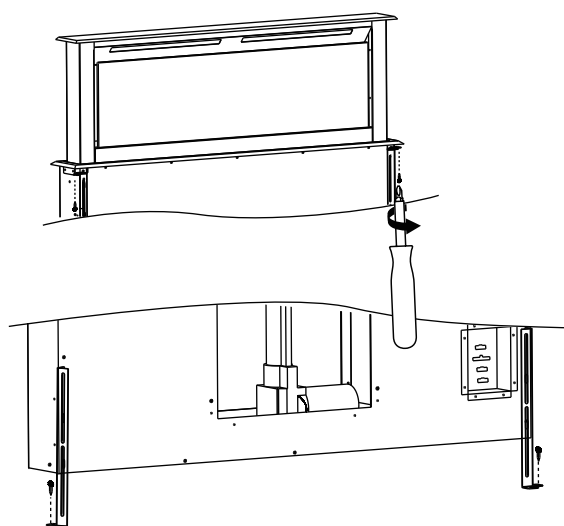


INSTALLATION

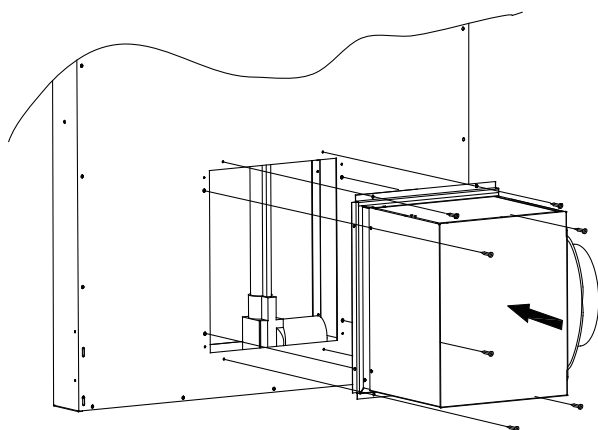
Fix the bracket onto the cabinet using 8 screws.

IMPORTANT

Do not need to fix the top two brackets if the cabinet is not wood based .



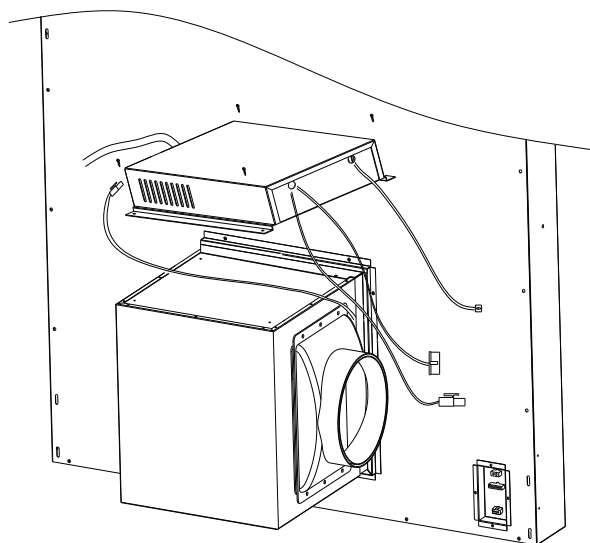
Fix the wind chamber back using the eight screws.



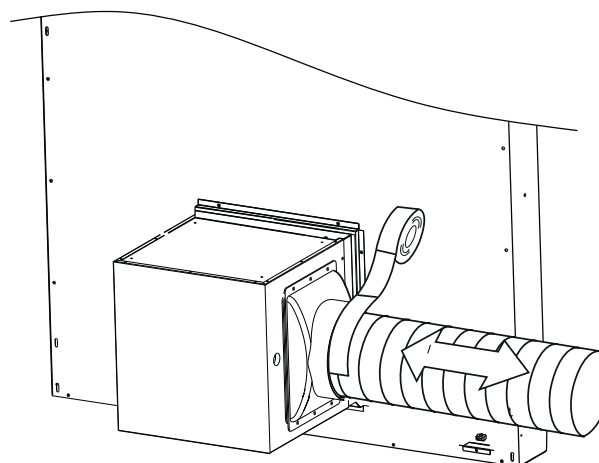
NOTE

It may be useful to seal the edge with appropriate sealant

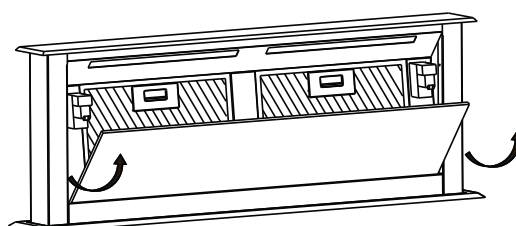
Fix the power box using four screws and connect the wire accordingly



Fix the vent pack (not supplied) using self adhesive aluminium tape (not supplied).



Plug in the cooker hood and fix the decorative glass.



INSTALLATION

If required, carefully fit an oven (in accordance with its manufactures instructions) on top of the warming drawer, taking care not to damage the top edge of the glass drawer unit. Ensure that the mains connection lead is located near to the socket outlet to avoid having to remove the product again to connect the mains electrical supply.

NOTE!

Ensure that the housing unit is aligned at a right angle.

ELECTRICAL REQUIREMENTS

Any permanent electrical installation must comply with the latest I.E.E. Regulations and local electricity company regulations. For your own safety a qualified electrician or contractor who is on the roll of the National Inspection Council for Electrical Installation Contracting (NICEIC) should undertake the electrical installation.

ELECTRICAL CONNECTION

Before connecting the mains supply ensure that the mains voltage corresponds to the voltage on the rating plate inside the appliance.

WARNING: THIS APPLIANCE MUST BE EARTHED

The appliance is supplied with a 3-core mains cable and must be connected to the electricity supply via a double pole switch having a 3mm minimum contact gap on each connector.

A Switched Fused Connection Unit to BS 1363 Part 4 is recommended.

The fuse must be rated at 3 Amps.

The wires in the mains lead are coloured in accordance with the following code:

Brown = L - Live

Blue = N - Neutral

Green and Yellow =  - Earth

The connection point must be placed in a position adjacent to the appliance so as to be readily accessible for an engineer in the event of a breakdown.

Disconnect the appliance from the mains supply before carrying out any kind of maintenance or cleaning.

THE APPLIANCE IS NOW READY TO USE.

TROUBLESHOOTING

FAULT	CAUSE	SOLUTION
Hood doesn't work	No power supply	Check the plug
		Check the main switch
Poor airflow	Aluminium grease filters are dirty.	Clean the filters
	Charcoal filters are dirty	Replace the charcoal filters
Motor running, but no airflow	Butterfly valve jammed	Contact customer service.
After running for a while, motor stop working	High temperature safety device activated	Ensure that the vent kit is fitted to the manufactures instructions
	Distance between the cooker hood and the hob is too small	Readjust the distance to Electric hobs
Works normally but cooking smells linger	Charcoal filter not fitted in recirculation mode or charcoal filter is full of grease	Fit charcoal filter if recirculating or change the filter
Whirring sound	Fan blade problem	Contact customer service.

Customer Service

To arrange an in guarantee service call, please contact customer services on the following numbers.

UK and N.Ireland – myappliances Customer Care Centre
T: 0344 8001128 E: enquiries@myappliances.co.uk
www.myspareparts.co.uk

Republic of Ireland (ROI) – myappliances Customer Care Centre
T: 1-800 535542 E: enquiries@myappliances.co.uk

In more detail...



MYAPPLIANCES
Unit 3 Normandy Landings,
3 Pope Street
NORMANTON
West Yorkshire
WF6 2AG
