



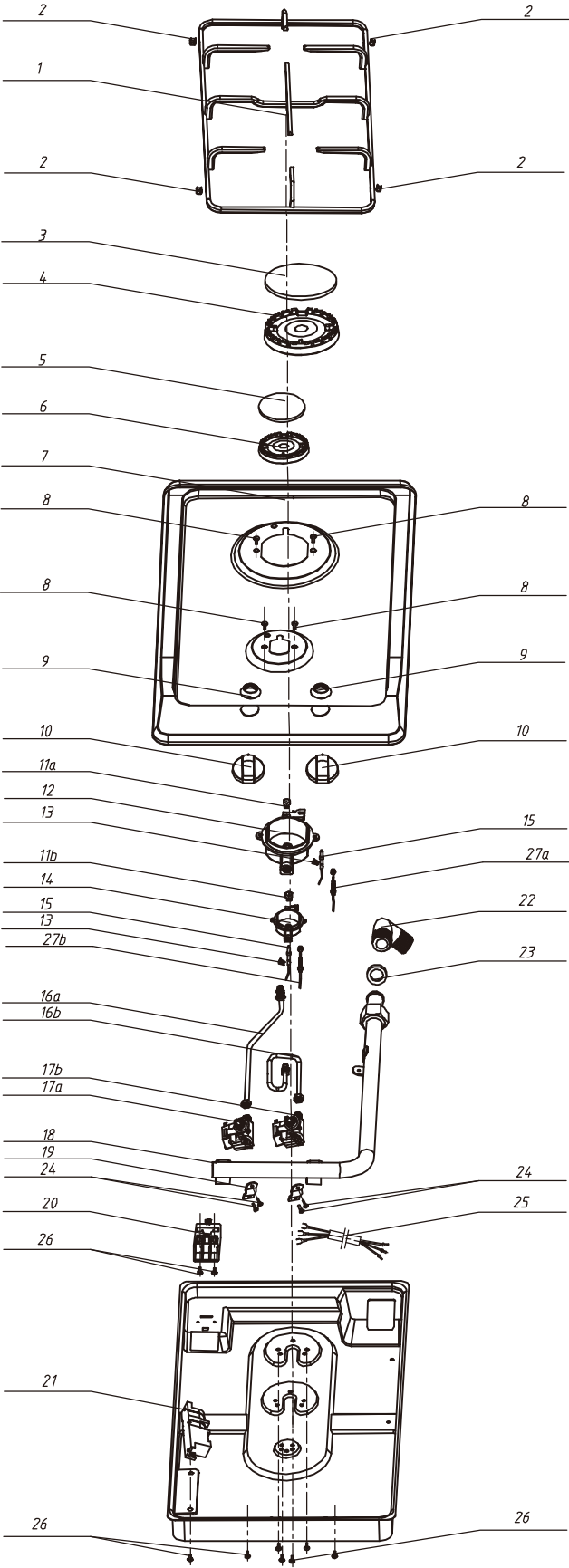
Gas Hob:CLGH2SS-F

Version:00

Date:2014-10-07

Product reference code: 645461

CLGH2SS-F Exploded drawing



00	New document	Eason	2014. 10. 7
Index	Modify description	Modified by	Date

CLGH2SS-F parts list

No.	Part code	part name	Qty
.1	32247017	pan supporter	1
.2	32102003	Non-slip mats	4
.3	32214005	burner cap (big)	1
.4	32223005	aluminum burner cap(big)	1
.5	32212007	burner cap (small)	1
.6	32221004	aluminum burner cap(small)	1
.7	32173019	inox panel with safety device	1
.8	20106011	screw-inox	4
.9	32120003	waterproof ring for Switch	2
.10	32244048	knob	2
.11a	32191007	auxililary nozzle	1
11b	32191005	nozzle	1
12	32203005	burner(big)	1
13	32255008	Spring	2
14	32300007	spark pin (403A)	2
15	32201004	burner(small)	1
16a	32163002	aluminium pipe(A)	1
16b	32163003	aluminium pipe(B)	1
17a	32113014	valve	1
17b	32113027	valve	1
18	32160149	air inlet pipe	1
19	32001012	hodler after electroplate	2
20	20106017	screw	2
21	32311013	binding post	1
22	32304002	two hole impulse	1
23	32243006	air inlet elbow	1
24	32258016	sealing gasket	2
25	32307004	power cord	1
26	20105004	self taping screw	10
27a	32312005	thermocouple	1
27b	32312004	thermocouple	1

CLGH2SS-F Wiring diagram

