



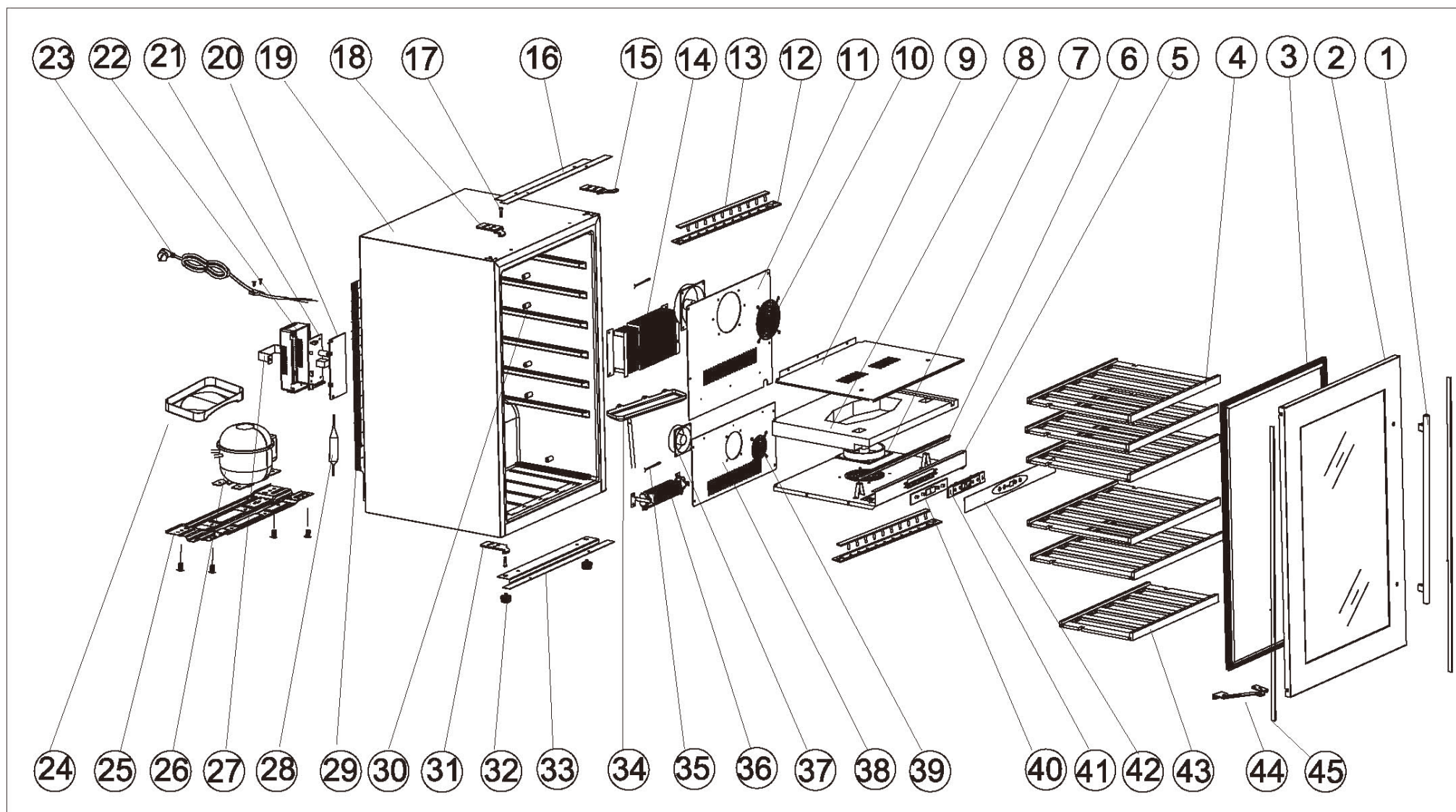
Wine cooler:BIWC885

Version:00

Date:2015-08-10

Product reference code:BIWC885

BIWC885 Exploded drawing



| | | | |
|-------|--------------------|-------------|-------------|
| | | | |
| 00 | New document | Eason | 2015. 8. 10 |
| Index | Modify description | Modified by | Date |

BIWC885 parts list

| No. | Part No. | Description | QTY |
|-----|--------------|--|-----|
| 1 | 3.02.02.0273 | Handle-wine cooler-Vinoteca V41B | 1 |
| 2 | 2.02.06.0373 | Complete door-wine cooler-Vinoteca V41B | 1 |
| 3 | 3.02.01.0318 | Gasket-wine cooler-Vinoteca V41B | 1 |
| 4 | 3.02.02.0236 | Full Shelf-wine cooler-Vinoteca V41B | 5 |
| 5 | 3.02.08.0319 | Spacer Base | 1 |
| 6 | 3.02.01.0939 | Spacer Fixed Strip | 1 |
| 7 | 3.01.05.0189 | Fan Motor-wine cooler-Vinoteca V41B | 2 |
| 8 | 3.02.03.0066 | Spacer Polyfoam | 1 |
| 9 | 3.02.08.0818 | Spacer Cover | 1 |
| 10 | 3.02.02.0090 | Big Fan Guard-wine cooler-Vinoteca V41B | 1 |
| 11 | 3.02.08.0018 | Upper Air Duct-wine cooler-Vinoteca V41B | 1 |
| 12 | 3.02.01.0864 | Light Cover-wine cooler-Vinoteca V41B | 2 |
| 13 | 3.02.05.0096 | LED Light-wine cooler-Vinoteca V41B | 2 |
| 14 | 3.02.06.0298 | Evaporator Assembly-wine cooler-Vinoteca V41B | 1 |
| 15 | 3.02.08.0376 | Right Upper Hinge Plate-wine cooler-Vinoteca V41B | 1 |
| 16 | 3.02.08.0321 | Upper Fixing Strip-wine cooler-Vinoteca V41B | 1 |
| 17 | 3.02.02.0240 | Hinge Pin-wine cooler-Vinoteca V41B | 2 |
| 18 | 3.02.08.0378 | Left Upper Hinge Plate-wine cooler-Vinoteca V41B | 1 |
| 19 | 2.02.01.0577 | Cabinet-wine cooler-Vinoteca V41B | 1 |
| 20 | 3.02.01.0262 | PCB Cover-wine cooler-Vinoteca V41B | 1 |
| 21 | 3.02.05.0460 | Power PCB-wine cooler-Vinoteca V41B | 1 |
| 22 | 3.02.01.0835 | PCB Box-wine cooler-Vinoteca V41B | 1 |
| 23 | 3.02.05.0017 | Power Supply Cord-wine cooler-V41B | 1 |
| 24 | 3.02.01.0230 | Water Drip Tray-wine cooler-Vinoteca V41B | 1 |
| 25 | 3.02.08.0776 | Compressor Base-wine cooler-V41B | 1 |
| 26 | 3.02.06.0245 | Compressor-wine cooler-V41B | 1 |
| 27 | 3.02.02.0777 | Bracket-wine cooler-Vinoteca V41B | 1 |
| 28 | 3.02.06.0325 | Filter Dryer-wine cooler-V41B | 1 |
| 29 | 3.02.06.0179 | Condenser-wine cooler-Vinoteca V41B | 1 |
| 30 | 3.02.01.1128 | Plastic Post-wine cooler-Vinoteca V41B | 14 |
| 31 | 3.02.08.0377 | Lower Hinge Plate-wine cooler-Vinoteca V41B | 1 |
| 32 | 3.01.01.0426 | Leg-wine cooler-Vinoteca V41B | 2 |
| 33 | 3.02.08.0322 | Lower Fixing Strip-wine cooler-Vinoteca V41B | 1 |
| 34 | 3.02.01.0271 | Evaporator Water Drip Tray-wine cooler-Vinoteca V41B | 1 |
| 35 | 3.02.05.0100 | Sensor-wine cooler-Vinoteca V41B | 2 |
| 36 | 3.02.05.0045 | Thermistor-wine cooler-V41B | 1 |
| 37 | 3.02.18.0040 | Small Fan Motor-wine cooler-Vinoteca V41B | 1 |
| 38 | 3.02.08.0027 | Lower Air Duct-wine cooler-Vinoteca V41B | 1 |
| 39 | 3.02.02.0167 | Small Fan Guard-wine cooler-Vinoteca V41B | 1 |
| 40 | 3.02.05.0299 | Display PCB-wine cooler-Vinoteca V41B | 1 |
| 41 | 3.02.01.0236 | Display PCB Fixed Base-wine cooler-Vinoteca V41B | 1 |
| 42 | 3.02.03.4980 | Control Panel Film-wine cooler-Vinoteca V41B | 1 |
| 43 | 3.02.02.0581 | Half Shelf-wine cooler-Vinoteca V41B | 1 |
| 44 | 6.2.1.130033 | V41B | 1 |
| 45 | 3.02.01.0931 | Gap Cover | 2 |