



Gas Hob:UBGOG60BKD

Product reference code:UBGOG60BKD

Modified by:Eason

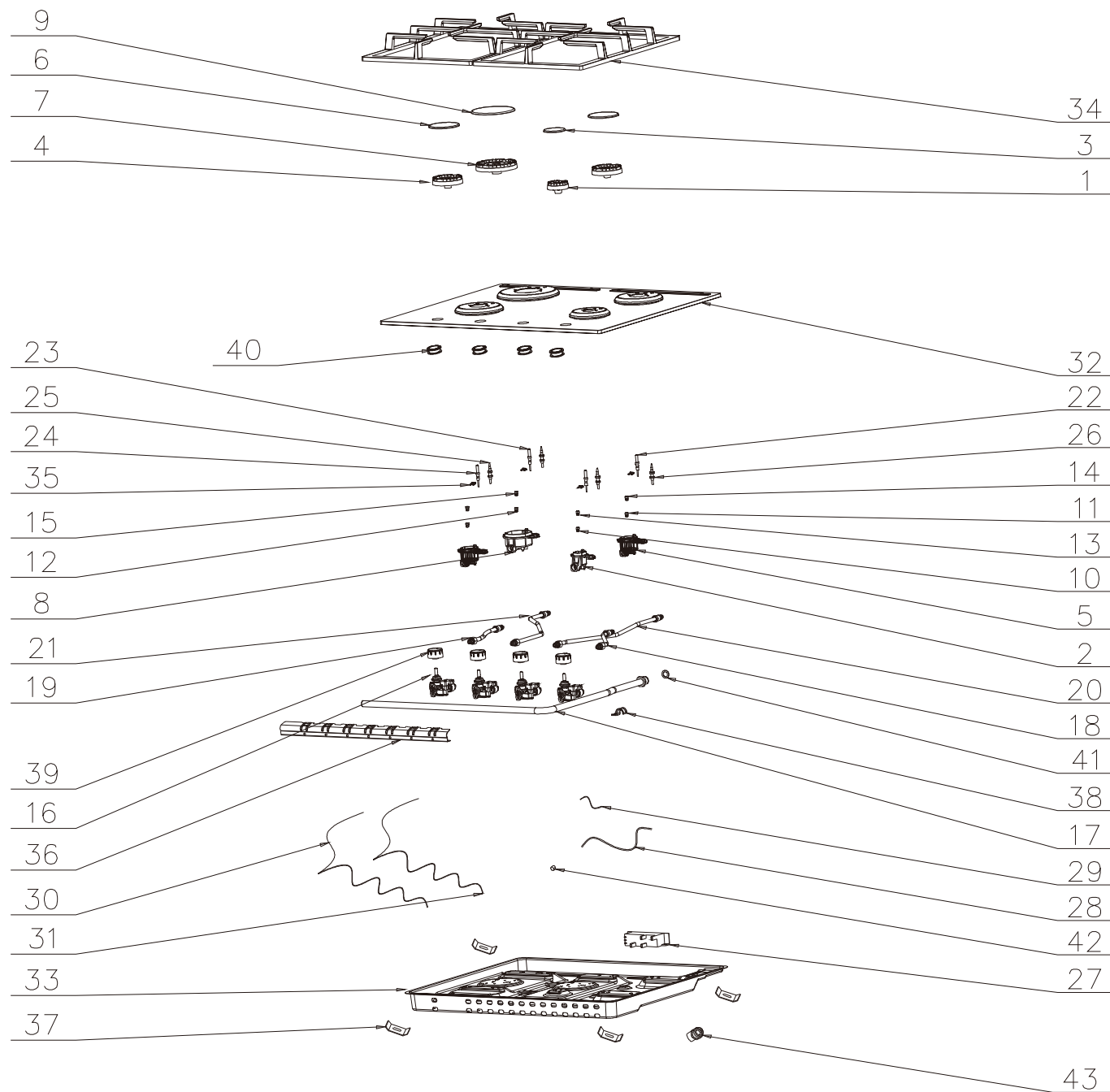
Modification:

00_2017.06.08 New document

01_2017.07.01 Change No.12 part number

02_2018.03.14 Remove some part code, replaced by 45000013

UBGOG60BKD Exploded drawing



UBGOG60BKD parts list

No.	part code	drawing code	part name	名 称	Qty	Remark
1	11000001	AB0001	Aux-aluminum burner	Aux分火器	1	
2	11000002	AB0002	Aux-burner basement	Aux底杯	1	
3	11000003	AB0003	Aux-burner cap	Aux火盖	1	
4	11000004	AB0004	Semi rapid-aluminum burner	Semi-rapid分火器	2	
5	11000005	AB0005	Semi rapid-burner basement	Semi-rapid底杯	2	
6	11000006	AB0006	Semi rapid-burner cap	Semi-rapid火盖	2	
7	11000007	AB0007	rapid-aluminum burner	Rapid分火器	1	
8	11000008	AB0008	rapid-burner basement	Rapid底杯	1	
9	11000009	AB0009	rapid-burner cap	Rapid火盖	1	
10	11000010	AB0010	nozzle(Φ0.76)-NG	Φ0.76喷嘴	1	
11	11000011	AB0010	nozzle(Φ0.97)-NG	Φ0.97喷嘴	2	
12	11000012	AB0010	nozzle(Φ1.29)-NG	Φ1.29喷嘴	1	
13	11000014	AB0011	nozzle(Φ0.51)-LPG	Φ0.51喷嘴	1	
14	11000015	AB0011	nozzle(Φ0.65)-LPG	Φ0.65喷嘴	2	
15	11000016	AB0011	nozzle(Φ0.87)-LPG	Φ0.87喷嘴	1	
16	11000434	AB0191	valve	开关阀D	4	
17	11000754	AB0403	air inlet pipe	AGCI6042 进气管	1	
18	11000817	AB0451	AUX-aluminium pipe	AGCI6040 aux 铝管	1	
19	11000818	AB0452	SR-aluminium pipe(short)	AGCI6040 SR 短铝管	1	
20	11000592	AB0276	SR-aluminium pipe(long)	AGCI6040 SR 长铝管	1	
21	11000593	AB0277	rapid-aluminium pipe	AGCI6040 RAPID 铝管	1	
22	11000677	AB0025	spark pin (150)	sabaf 150 点火针	1	
23	11000678	AB0025	spark pin (350)	sabaf 300 点火针	2	
24	11000048	AB0025	spark pin (400)	sabaf 400 点火针	1	
25	11000785	AB0431	thermocouple(250)	sabaf 250 单线热电偶	2	
26	11000787	AB0431	thermocouple(510)	sabaf 510 单线热电偶	2	
27	12000002	AD0002	four hole impulse	4头脉冲点火控制器	1	
28	12000030	AD0006-2	PVC power cable	PVC 电源线组	1	
29	12000033	AD0008-1	Internal line(blue)	AGCA7051 蓝色线组	1	
30	12000028	AD0013-1	Internal line(I)	AICA6040 线组I	1	
31	12000014	AD0014	Internal line(II)	AICA6040 棕色线组II	1	
32	45000013		Glass panel assembly	AGCI6040-1-CAT-B-1 玻璃面板组件	1	
33	13000299	AC0183	bottom cover	AGCI6040 底壳	1	
34	13020096	ACE094	pan supporter-left	AGCI6040左炉架	1	
35	13020097	ACE095	pan supporter-right	AGCI6040右炉架	1	
36	13000482	AC0268	Aux-burner bracket	AGCI7052 AUX炉头支架	2	
37	13000483	AC0269	SR-burner bracket	AGCI7052 SR炉头支架	2	
38	13000006	AC0006	Ignition pin fixing card	点火针固定卡片	4	
39	13000467	AC0257	Valve fixing bracket	AICA6040 阀体固定支架-A	1	
40	300001594		Installation package	安装附件包3	1	
41	13000046	AC0042	Intake pipe mounting bracket	进气管安装支架	1	
42	13000202	AC0155	air inlet elbow	NG 接头	1	
43	14000082	AE0057	knob #18	旋钮18-A	4	
44	14000045	AE0045-1	Knob waterproof ring	旋钮防水圈A	4	
45	14000005	AE0005	Joint gasket	接头密封垫	2	
46	14000006	AE0006	Power cord buckle	6N-4电源线扣	1	

Remove these parts code,	13000232	AC0150-1	Aux-tray	AGCH6042 aux 水盘总成 搪瓷	1	Already replaced by 45000013(PO 2018/04/00000 81 starting)
	13000233	AC0151-1	SR -tray	AGCH6042 S-R 水盘总成 搪瓷	2	
	13000235	AC0160-1	rapid -tray	AGCH6042 RAPID 水盘总成 搪瓷	1	
	13000270	AC0160	front Aluminum trim	AGCI6040前铝板	1	
	13000478	AC0264	Decorative strips	AGCI6040 装饰条	1	
	16000036		column	Φ4.0 扁平头柱	4	
	14000051	AE0046	Aux-tray waterproof ring	AGCH6042 aux 水盘防水圈	1	
	14000052	AE0047	SR-tray waterproof ring	AGCH6042 S-R 水盘防水圈	2	
	14000057	AE0052	rapid-tray waterproof ring	AGCH6042 RAPID 水盘防水圈	1	
	15000215	AG0110	glass plate	AGCI6040-1-CAT 玻璃面板-B	1	

UBG0G60BKD Wiring diagram

