



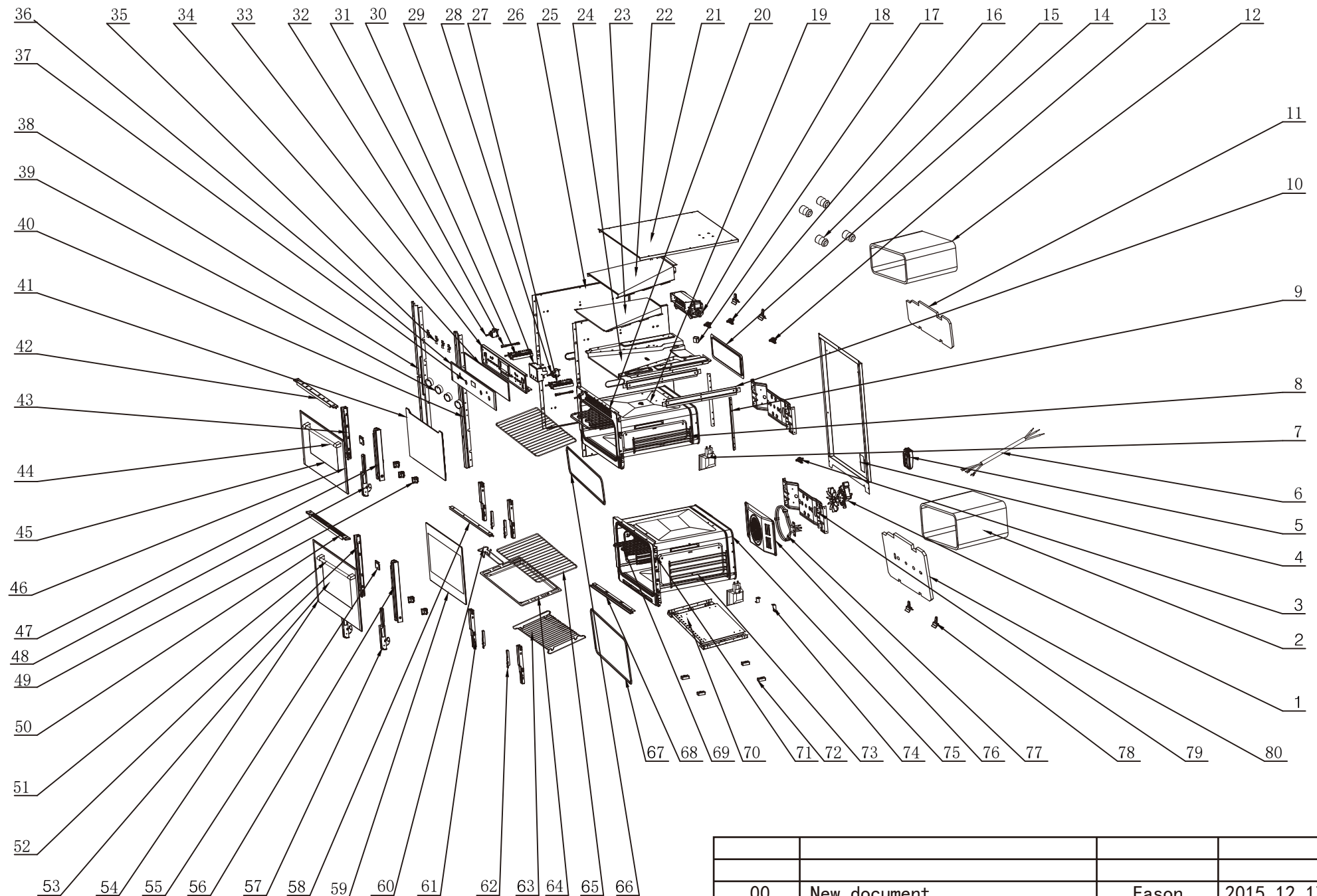
Double Oven:AMFTC72SS2

Version:00

Date:2015-12-17

Product reference code:AMFTC72SS2

AMFTC72SS2 Exploded drawing

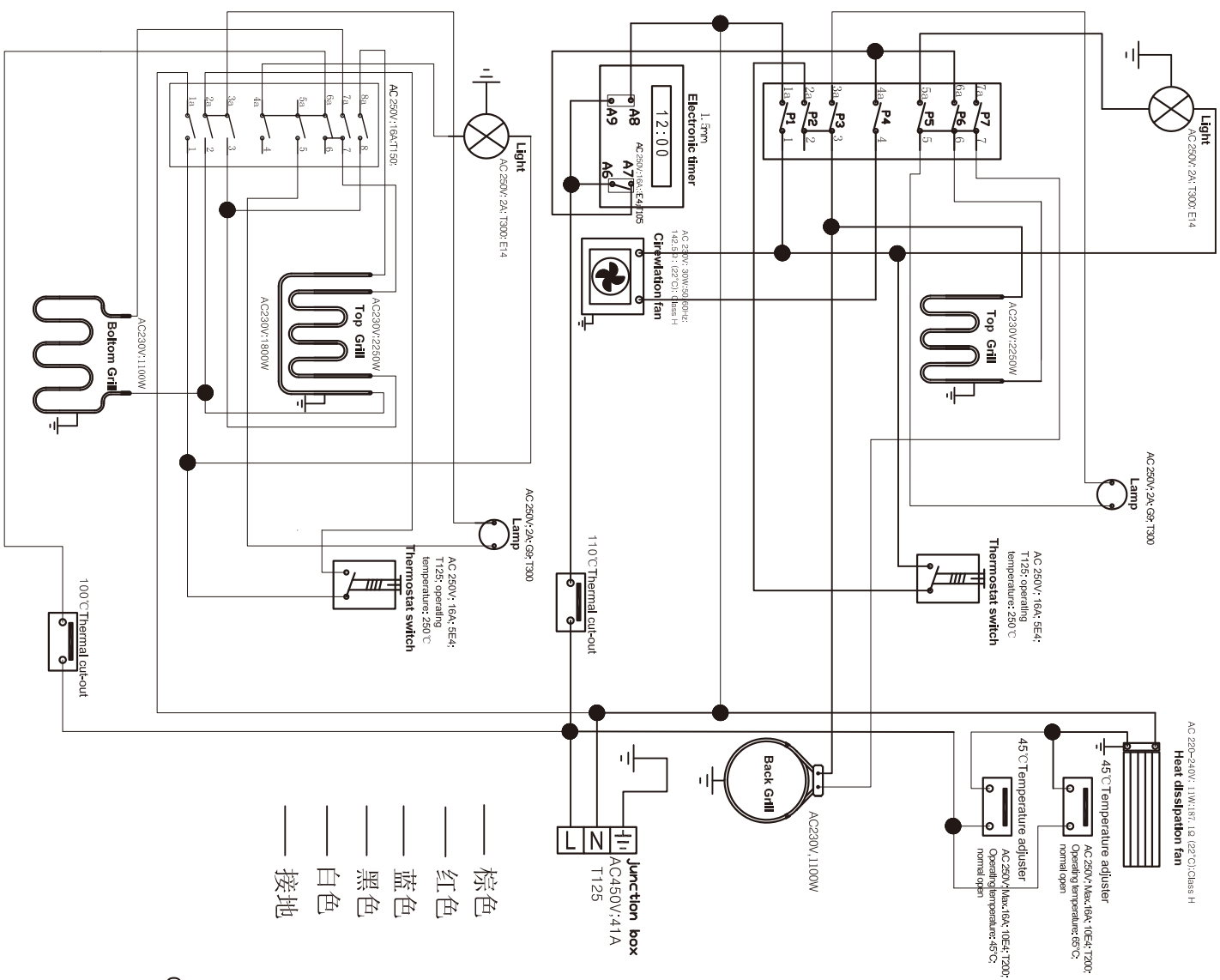


00	New document	Eason	2015. 12. 17
Index	Modify description	Modified by	Date

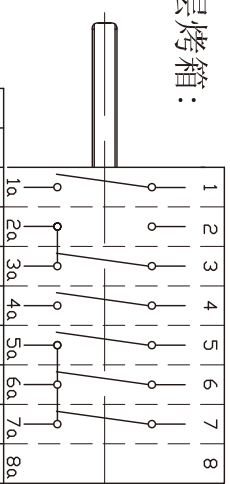
AMFTC72SS2 parts list

No.	part code	Part description	Qty	chinese description
1	33315002	grill fan assembly	1	循环风机组件
2	33120002	heat preservation fibre	1	内胆圈保温纤维（下）
3	36154001	Thermostat（110℃）	1	温控器 SF1-068
4	33030021	back cover board	1	外壳后盖板-AD-K25(C)-09
5	33005016	terminal box	1	接线盒-AD-K25(A)-22
6	32307016	power cord-European style	1	无头-1.5米-H05VV-F 头部3个鳄鱼齿
7	33317001	lamp assembly	2	方灯组件
8	33140011	side rack	2	左右导轨支架-AD-K25(B)-12
9	33027012	connect board for top and bottom cavity	2	上下内胆连接板-AD-K25(A)-11
10	33027014	fixing panel for exhausting pipe base board	2	排烟道底板固定板-AD-K25(A)-13
11	33121002	heat preservation fibre	1	底盖保温纤维（上）
12	33120002	heat preservation fibre	1	内胆圈保温纤维（上）
13	33308027	over heat protector100℃	1	过热保护器-100℃
14	33001037	back catalytic line	1	背部易洁板-AD-K25(B)-07
15	33141002	guide rail bracket fixing axis	4	导轨支架固定轴
16	33310003	heat dissipation thermostat	2	45℃散热温控器
17	33215013	exhausting pipe	1	排烟筒-AD-K25(B)-05
18	33313020	cooling fan assembly	1	散热风机组件（双排气）
19	33058091	top cavity assembly	1	内胆组件（上）-AD-K25(B)配方灯
20	33018113	cavity panel	1	内胆面板(上)-AD-K25(B)-20-01
21	33031014	top cover plate	1	外壳上盖板-AD-K25(A)-01
22	33028004	exhausting pipe top cover board	1	排烟道上盖板-自洁烤箱专用
23	33026004	exhausting pipe middle cover board	1	排烟道中盖板-自洁烤箱专用
24	33027002	exhausting pipe base board	1	排烟道底板-自洁烤箱专用
25	33033017	side plate (left&right)	2	外壳左右侧板-AD-K25(C)-06
26	33303006	top heating element	1	顶层电热管
27	33301035	function switch	1	档位开关（5功能）
28	33311018	temperature adjuster	1	温控开关-K25(A)-21
29	33300061	sensor touch timer（3 button）	1	三键定时器（蓝色）-触摸
30	33301034	function switch	1	档位开关（4功能）
31	33312001	indicator light	2	指示灯
32	33311008	temperature adjuster	1	温控开关-60cm烤箱
33	33018148	fixing panel for switch	1	开关面板固定板-AD-K25(C)-05
34	90134002	single adhesive tape	1	黑色单面胶
35	33006001	connect board switch	4	开关固定连接板
36	34039003	Switch panel decorative plate	1	控制面板装饰片-IX03
37	33101464	control panel assembly	1	开关面板（4功能-5功能）三键触摸-AD-K25(C)
38	33014092	right bracket for out cover plate	1	外壳左支架-AD-K25（C）-07
39	32244031	knob.21	4	21号旋钮(亮光)
40	33014093	left bracket for out cover plate	1	外壳右支架-AD-K25（C）-08
41	33103045	inner glass(top door)	1	内玻璃-上-AD-K25(B)-10-02B
42	33014087	door frame top bracket	1	门上支架(前面开孔)-AD-K25(A)-10-01
43	33014080	door frame left bracket	1	门框左支架-AD-K25(B)-10-04
44	33190007	handle H1	1	1号拉手
45	33102520	door panel	1	门面板-418-AD-K25(B)-10-01(镀膜)
46	33015297	Door panel decorative plate	1	门面板装饰板-AD-K25(B)(12mm)
47	33014079	door frame right bracket	1	门框右支架-AD-K25(B)-10-05
48	33180020	hinge #14 assembly	2	铰链组件-14号铰链
49	33014049	fixing panel for inner glass	2	内玻璃左下固定块
	33014050	fixing panel for inner glass	2	内玻璃左下固定块
	33014142	fixing panel for inner glass	1	内玻璃固定块
50	33014250	top bracket for oven door	1	门上支架-PN-K15(A)-20-01
51	33190007	handle H1	1	1号拉手
52	33014084	door frame left bracket	1	门框左支架-PN-K25(C)-10-03
53	33102521	door panel	1	门面板-418-AD-K25(C)-10-01（镀膜）
54	33015296	S.S trim for door panel	1	门面板装饰板-AD-K25@ (12mm)
55	33006012	fixing board for handle	2	拉手固定板
56	33014083	door frame right bracket	1	门框右支架-PN-K25(C)-10-04
57	33180021	hinge 15 assembly	2	铰链组件-15号铰链
58	33027015	cavity panel connector	1	内胆面板连接板（前）-AD-K25(A)-09
59	33103046	inner glass	1	内玻璃-AD-K25（C）-10-02B
60	33172001	handle for rack	1	搁架抓手
61	33024006	side bracket for cavity(left&right)	2	内胆左右支架-AD-K25(A)-05
62	33005014	fixing board for hinge	4	铰链固定板-AD-K25(A)-06
63	33170003	shelf for tray	1	烤盘架(浅)
64	33224003	baking tray	1	油脂收集盘 浅
65	33170001	grill rack	2	搁架
66	33803013	door seal assembly	1	门封条组件-K25（B）
67	33803014	door seal assembly	1	门封条组件-K25（C）
68	33027016	bottom support for cavity panel	2	内胆面板下支撑-AD-K25(A)-12
69	33303009	top heating element	1	顶层电热管-5功能
70	33029015	bottom cover plate	1	外壳底板-AD-K25(A)-03
71	33018149	cavity panel	1	内胆面板(下)-PN-K25(C)-20-01
72	33237030	the support for bottom cover plate	4	底板支撑块-PN-K24-08
73	36038003	side rack	2	导轨支架 AD-K25(C)-01
74	33006063	the bottom support for cavity	2	内胆下支撑-AD-K25(C)-13
75	33058092	cavity assembly	1	内胆组件（下）-AD-K25(C)配双方灯
76	33001022	the cover plate for back heating element	1	背部电热管挡板-2(PN-K14-06)
77	33303040	rear heating element	1	背部电热管-PN-K14-12
78	33035001	thermostat switch sensor fixer	10	温控开关探头固定夹
79	33016001	back bracket for cavity	2	内胆后支架
80	33121002	heat preservation fibre	1	底盖保温纤维（下）

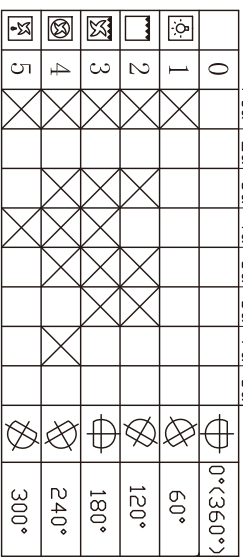
AMFTC72SS2 Wiring diagram



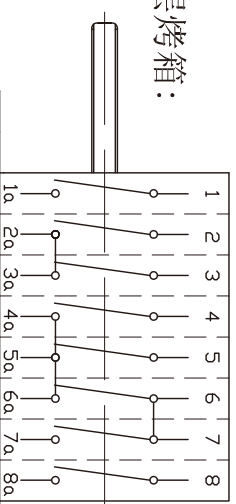
下层烤箱:



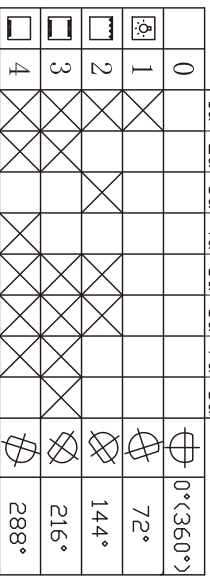
Light
Grill
Fan Assisted Grill
Baking Mode
Defrosting Mode



上层烤箱:



Light
To poven
Convection mode
Delicate cooking



1、☒	Contact	"ON"
2、☐	Contact	"OFF"