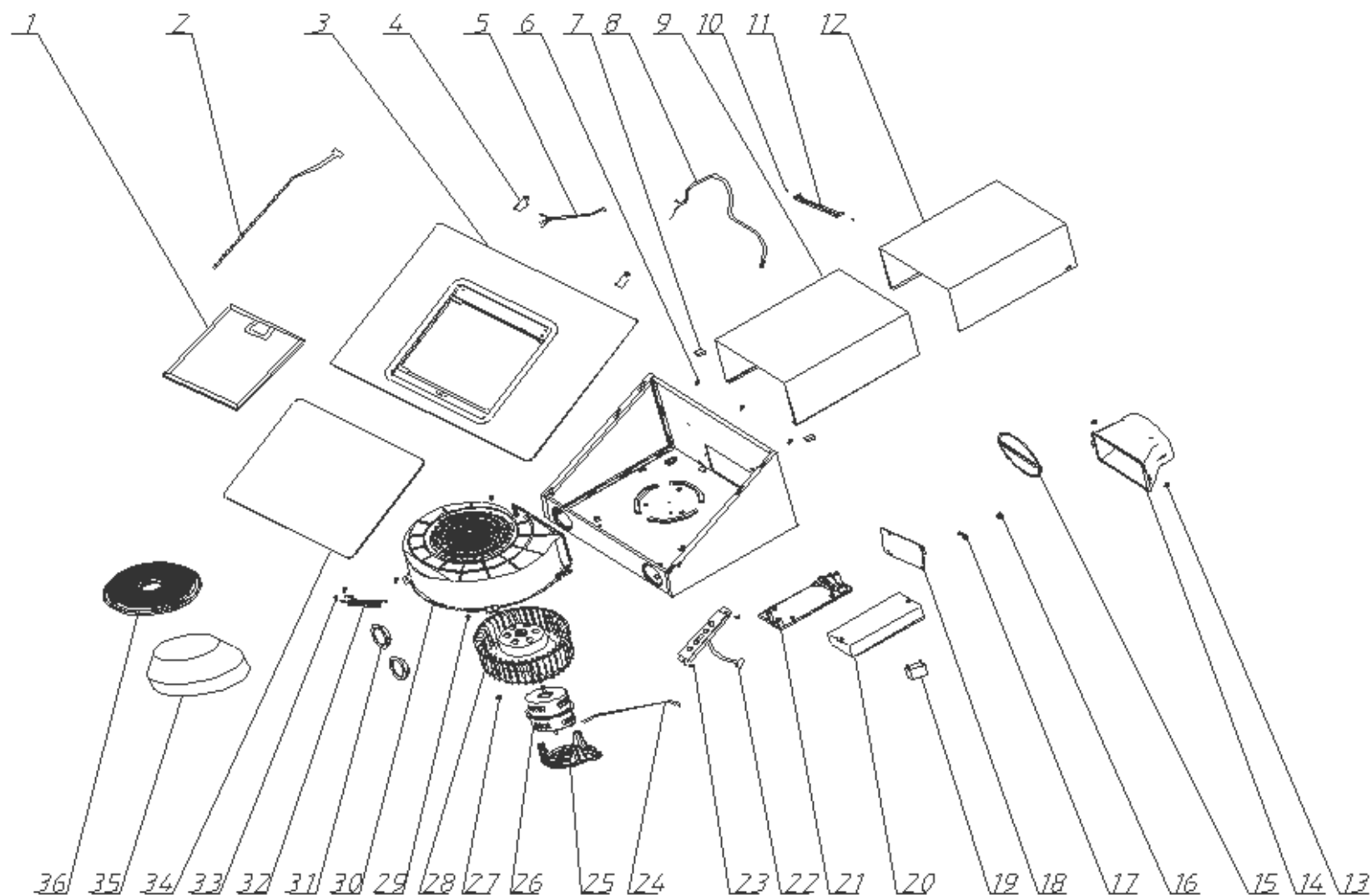


Angled Glass Cooker Hood

Model Number UBHHH70BK

Parts Manual

Exploded Drawing



02			
01			
00			
Index	Modify description	Modified by	Date

Parts List

S/N	Ref.	Description	QTY	REMARK
36	7002080200	UBHHH70BK: CHARCOAL FILTER	1	Optional
35	7121105350	UBHHH70BK: OUTLET TUBE REDUCER 150 TO 120MM	1	
34	7005017500	UBHHH70BK: GLASS - SMALL	1	
33	9111351201	UBHHH70BK: SCREW 3.5*12	2	
32	7112105011	UBHHH70BK: WIRE GROOVE	1	
31	7135050120	UBHHH70BK: LED LAMP	2	
30	7121105010	UBHHH70BK: MOTOR HOUSING	1	
29	502010125	UBHHH70BK: SCREW M4*8	3	
28	7005020200	UBHHH70BK: CV BLADE WHEEL	1	
27	9131050001	UBHHH70BK: NUT M5	1	
26	7131050001	UBHHH70BK: MOTOR	1	
25	7121105030	UBHHH70BK: MOTOR HOLDER	1	
24	7030300025	UBHHH70BK: WIRE 450 - SWITCH	1	Use from 18W34
	7137135001	UBHHH70BK: WIRE 500 - SWITCH	1	Use to 18W33
23	502010125	UBHHH70BK: SCREW M4*8	3	
22	7030300037	UBHHH70BK: CONTROL PCB	1	Use from 18W34
	7134050120	UBHHH70BK: CONTROL PCB	1	Use to 18W33
21	7121105040	UBHHH70BK: POWER SUPPLY BOX	1	
20	7121105050	UBHHH70BK: COVER - POWER SUPPLY BOX	1	
19	7132030010	UBHHH70BK: CAPACITANCE	1	
18	7134050003	UBHHH70BK: POWER PCB	1	Use from 18W34
	7134050150	UBHHH70BK: POWER PCB	1	Use to 18W33
17	7121104100	UBHHH70BK: WIRE GROOVE 3	1	
16	7121104130	UBHHH70BK: PROTECTION WIRE COVER	1	
15	7121103030	UBHHH70BK: RETURN VALVE	2	
14	7121105100	UBHHH70BK: OUTLET CONNECTOR	1	
13	9111351201	UBHHH70BK: SCREW 3.5*12	2	
12	7110105443	UBHHH70BK: CHIMNEY - INNER	1	

11	7112106081	UBHHH70BK: BRACKET - CHIMNEY	1	
10	9113400801	UBHHH70BK: SCREW ST4*8	2	
9	7110105433	UBHHH70BK: CHIMNEY - OUTER	1	
8	7136001709	UBHHH70BK: POWER CORD	1	
7	7121105320	UBHHH70BK: FIXING CLAMP - CHIMNEY	2	
6	9113400801	UBHHH70BK: SCREW ST4*8	3	
5	7137100044	UBHHH70BK: WIRING - LAMP	1	
4	7117105131	UBHHH70BK: HINGE	2	
3	7010100196	UBHHH70BK: GLASS - LARGE	1	Use from 18W34
	7151050007	UBHHH70BK: GLASS - LARGE	1	Use to 18W33
2	7135050002	UBHHH70BK: LED STRIP LIGHTS	1	
1	7005060200	UBHHH70BK: ALUMINIUM FILTER	1	