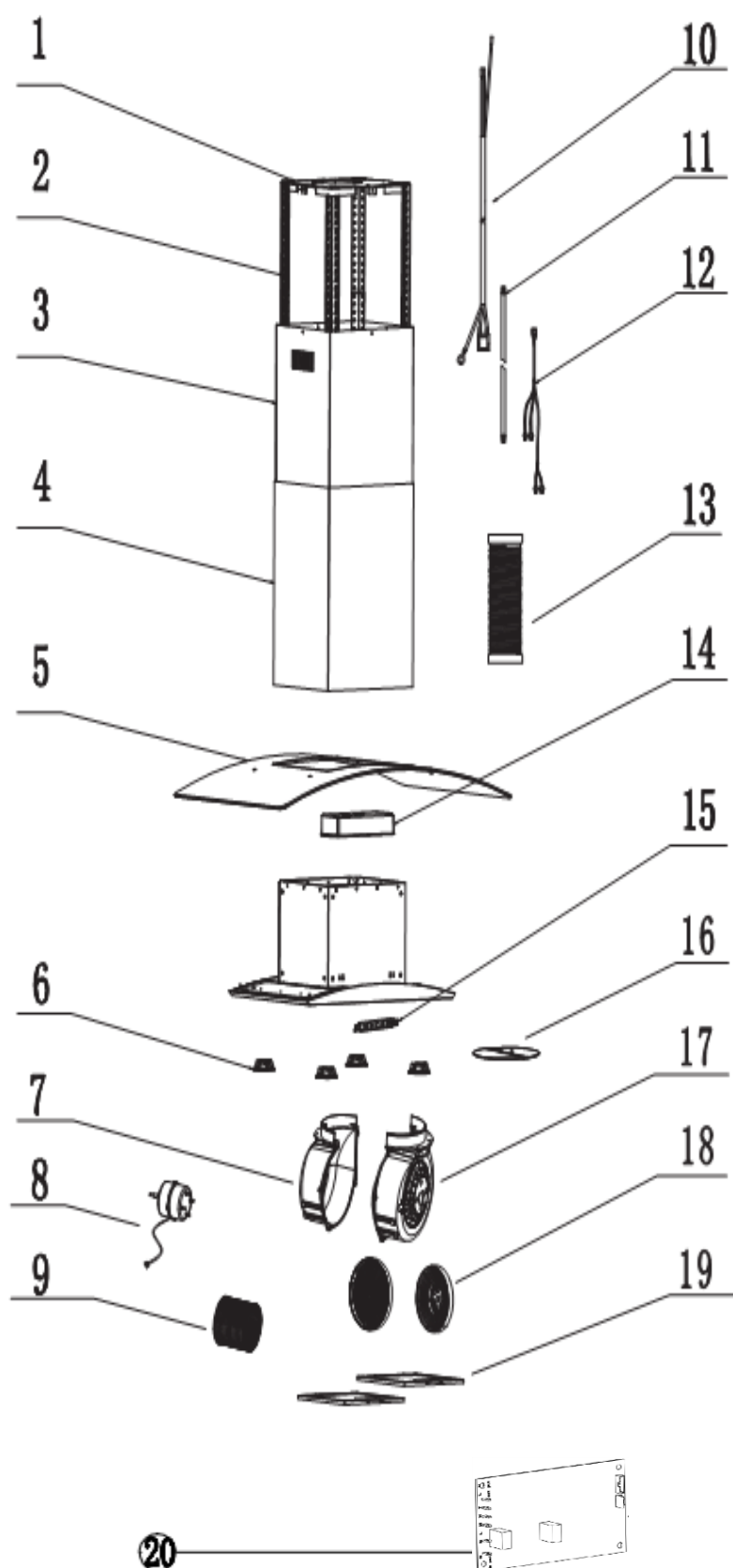


ISLA90BK  
Parts Manual

# Exploded Drawing



## Parts List

S/N	Ref.	Description	QTY	REMARK
1	B12-TI01-017-BX	Hanging plate	1	
2	B23-TI01-007-PX	Angle bar	1	
3	B21-TI01-011-TB1	Upper chimney for island hood	1	
4	B21-TI01-010-TB1	Lower chimney for island hood	1	
5	B33-TI02-042-XB	Glass	1	
6	B62-TY01-016-XX	LED lamp	4	
7	B30-TI01-029-JB	Housing K -left part	1	
8	B61-TY02-007-XX2	Housing K motor	1	
9	B30-TT03-012-JB	Fan	1	
10	B67-TY04-005-XB	Wire only, without plug	1	
11	B67-TY03-278-XX	Switch wire	1	
12	B67-TY03-006-XX	Light wire	1	
13	B36-TT03-018-XG	Φ150 Smoke tube	1	optional
14	B30-TG18-017-JB	Electric control box	1	
	B30-TG18-016-JB		1	
15	B14-TY07-274-BX	Switch-E02 soft touch	1	
16	B30-TG18-015-JB	Φ150 valve	1	
17	B30-TI01-028-JB	Housing K -right part	1	
18	B15-TF08-097-JB	Charcoal filter	2	optional
19	B35-TG01-018-XX	Alumnium filter	2	
20	B63-TY07-031-XX	PCB	1	Use to 18W33
	B63-TY07-031-XX1	PCB	1	Use from 18W34