



Oven:UBEMF73

Product reference code:UBEMF73

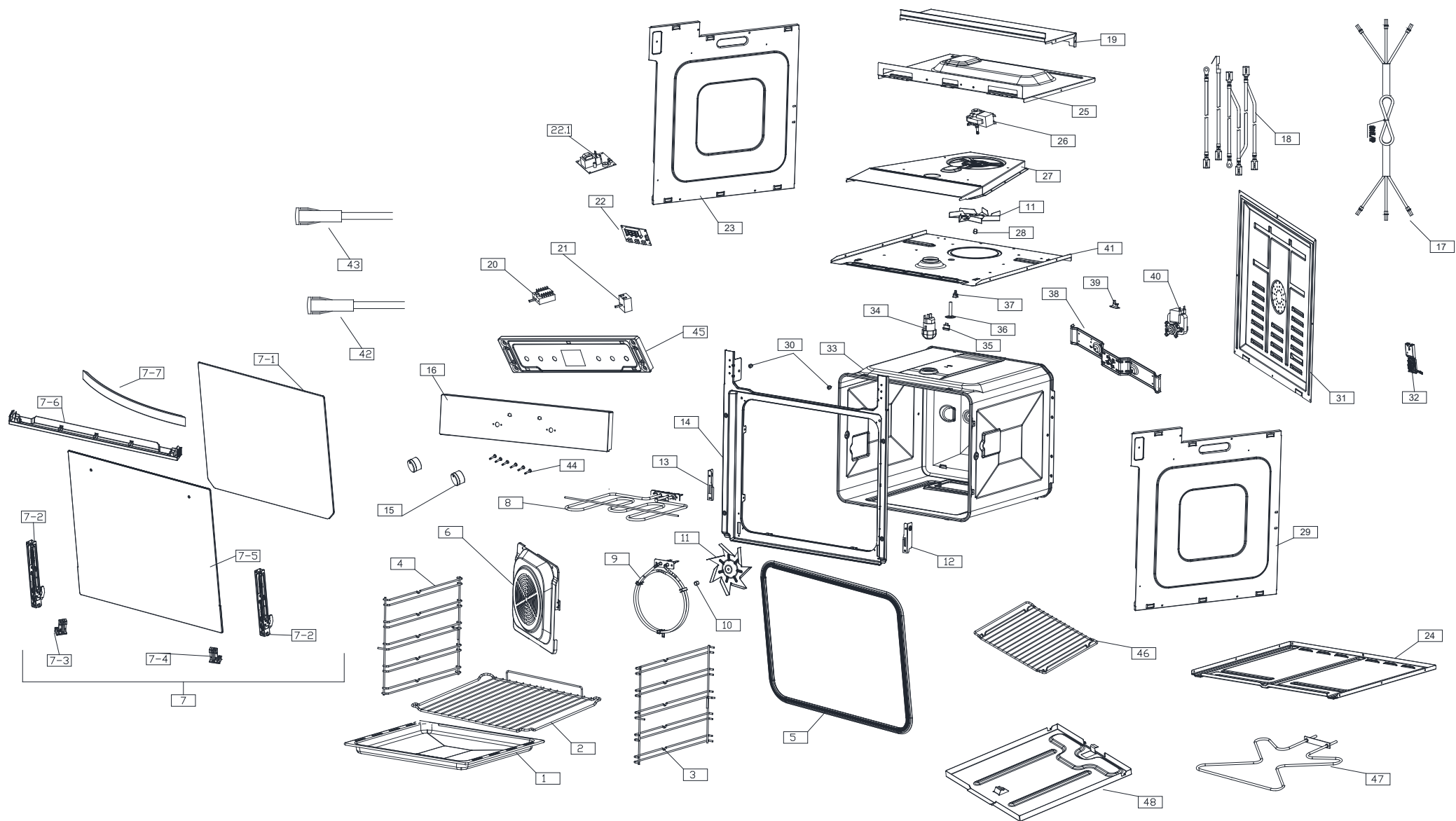
Modified by:Eason

Modification:

00\_2018.06.11 New document

01\_2020.10.29 Change “Exploded drawing” and “Wiring diagram” and part code 2/9/15/22/44/46/47

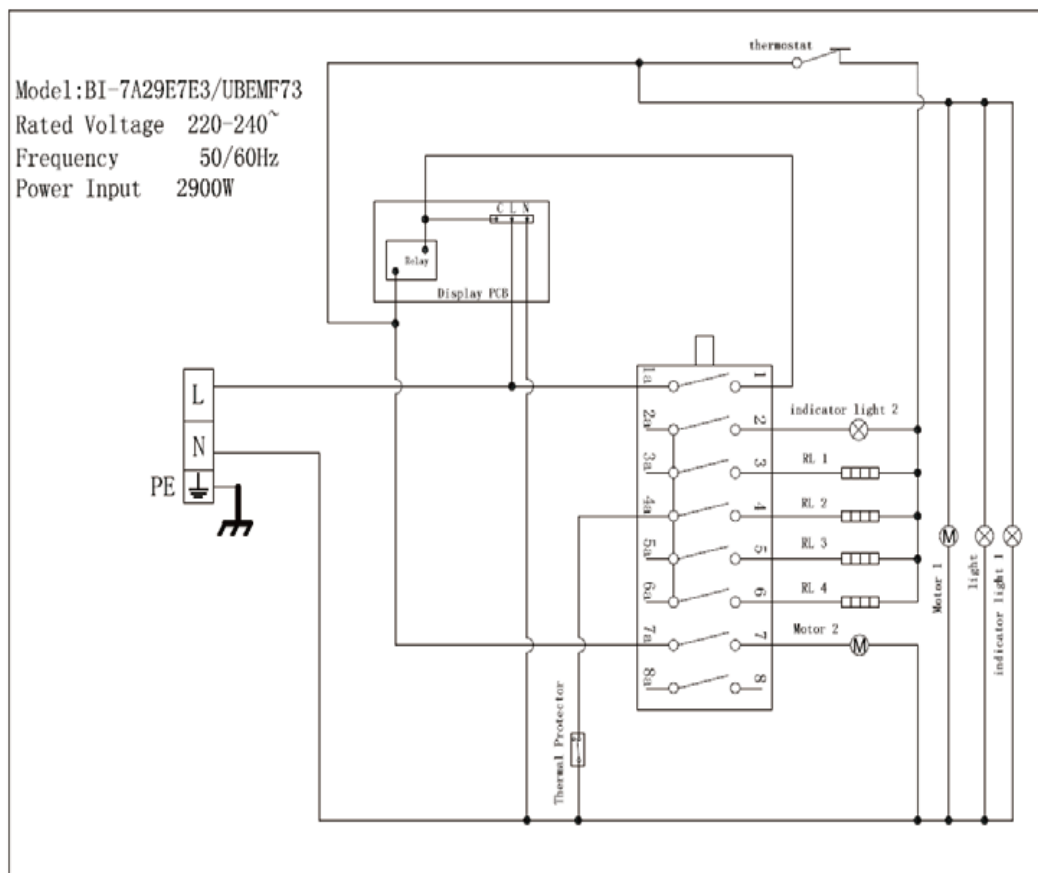
# UBEMF73 Exploded drawing



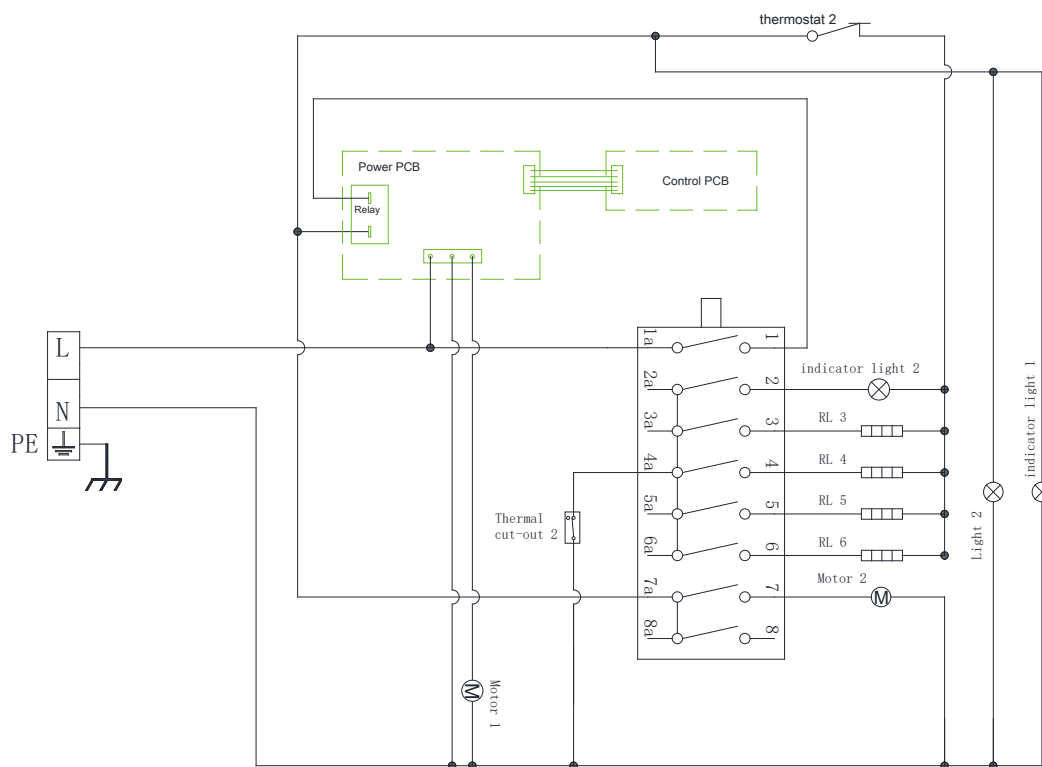
# UBEMF73 parts list

No.	Part code	Aoms Part Reference	part name	名 称	Qty	remark
1	305040432	BF-7A22D2E3-TP-01	tray	浅托盘5	1	
2	502010189	BH-7A31E7M-CJ-01	shelf	层架13	1	502010226 is the new code, the new and the old are interchangeable
	502010226	BH-7A31E0T1-CJ-01		层架13-2		
3	502010192	BH-7A31E7M-CJ-02-T1	Left Lateral grids	左托盘架A-9	1	
4	502010193	BH-7A31E7M-CJ-03-T1	right Lateral grids	右托盘架A-9	1	
5	300002928	BI-6A31E7E3-1-5C-T1	door seal assy	门密封条组件5C	1	
6	305040270	BA-6A31E7E2-1-FZ-01-T1	Fan cover	风扇罩-B3	1	
7	300003712	BI-7A22D1-1-01	door assembly	门部件	1	
7/1	306360956	BF-8A31E7E1-1-01-04	inner glass	内层玻璃图案A	1	
7/2	502000053	BA-319A TB-1-01-02-T3	Hinge assembly	铰链组件12	2	
7/3	503130030	BF-8A31E7E1-1-01-02	Left fixed block	左下固定块3	1	
7/4	503130031	BF-8A31E7E1-1-01-03	right fixed block	右下固定块3	1	
7/5	300003714	BI-7A22D1-1-01-01	Outer glass assembly	外层玻璃组件	1	
7/6	505060095	BF-8A31E7E1-1-01-05	Door ventilation blocks	散热板3	1	
7/7	502030083	BG-8A29E0T5-01-LS-01	door handle	门拉手28-2	1	
8	501001458	BH-7B29E7-1-01-A-2	Top heating element assembly	顶发热管组件A-2	1	
9	501001070	BF-6A31E7E1-1-HXG-01	rear heating element	环形发热管5-1	1	501001585 is the new code, the new and the old are interchangeable
	501001585	BF-6A31E7E1-1-HXG-01-T1		环形发热管5-1A		
10	502010147		nut M6	M6左旋标准法兰螺母	1	
11	305060090	BA-319A TB-1-03-01	Fan blades	扇叶-A	2	
12	505060098	BH-318A 7ET-1-06-01-T2	Left door link member	左门连杆-6	1	
13	505060099	BH-318A 7ET-1-07-01-T2	right door link member	右门连杆-6	1	
14	305040439	BF-7A22D2E3-1-Z2-01	door frame	烤箱座2-5	1	
15	501000103	BB-228AEG-04-02-00	knob	旋钮1	2	502530007 is the new code, the new and the old are interchangeable
	502530007	BH-7B22A1M-1-XN-01		旋钮4-1		
16	300003718	BI-7A29E7E3-1-02	Panel assembly	面板组件	1	
17	501001116	BG-7B22B1-1-DYX-01	power cable	CAT电源线	1	
18	501001370	BF-296A-5-01-01-B1-2-T1	wiring	配线（1套）	1	
19	305060023	BF-296D-1-06	top plate	顶板2-A	1	
20	501001380	BA-318AE-1-02-02-T1-A	Function switch	多位开关318A-A	1	
21	501000851	BB-228AEG-04-09-T1	thermostat switch	体胀式温控器-2	1	
22	501001200	WBI-8A29E7E3-02-W-01	PCB board	电控板组件	1	old
22	501001744-O	BD-6A22G2E3-1-XS-01	PCB board	E3显示板（6按键）	1	Start using in September 2020
22.1	501001751-O		Power Board	E3-power 电源板组件	1	
23	305060170	BG-224AG-5-23-T2	The left side plate	左侧板-B5	1	
24	305060174	BG-224AG-5-19-T1	bottom plate	底板2-A1	1	
25	305060177	BF-296A-5-01-06-02-T1	top plate	顶板1-B2	1	
26	501001138	BF-6A31E7E1-1-LQ-01	Cooling motor assembly	冷却电机组件1B	1	
27	305060175	BF-296D-1-02-03-T1	The wind deflector	导风板4-1	1	
28	502010148		nut M6	M6右旋标准法兰螺母	1	
29	305060171	BG-224AG-5-24-T2	The right side plate	右侧板-B5	1	
30	503150082	BB-228AEG-16-T1	Limit glue	限位胶2	2	
31	305060133	BG-224AG-5-20	Rear plate	后板A-1	1	
32	300001228	BF-296A-5-01-06-01	Connection box assembly	小接线盒组件	1	
33	300003310	BF-7A22D2E3-00-NDZJ-01	Cavity assembly	内胆组件AA-1	1	
34	501000575	BG-224AG-5-12	The lamp assembly	高温灯组件1	1	
35	505030002	BH-318A 7ET-1-01-08	Top heating tube mounting block	顶发热管安装块	1	
36	305100009	BF-7A22D2E3-00-DRT-01	Thermal tube	导热筒A3	1	
37	505090013	BB-228AEG-01-18	Buckle	感温头卡块	1	
38	305060192	BF-296A-5-ZJ-01	Motor bracket	电机支架5-B	1	
39	501000847	BF-6B29C3M-1-WK-06	Temperature protection	突跳式温控器3	1	
40	501001156	BF-6A31E7E1-1-DL-01	Convection motor assembly	对流电机组件6B	1	
41	305060163	BA-319A TB-1-02-02-T1	Insulation board	隔热板3-1	1	
42	501000075	BF-296D-1-05-01	Indicator lights(red)	配线30	1	
43	501000076	BF-224B-1-04-01	Indicator lights	配线31	1	
44	503120071	BF-6A22E3E3-2-AJ-01	button	按键-B4	6	The button color is silver
	503470011	BH-6B29C4E3-1-02-01-T1	button	按键-B5-1		The button color is black
45	305040222	BD-203AE-1-01-02-T1	Oven Panel seat	烤箱座1-C3-1	1	
46	502010160	BF-220AE-1-FJ-01-T1	shelf for tray	层架4B	1	502010220 is the new code, the new and the old are interchangeable
	502010220	BF-7A29E0T1-00-CJ-01-T1		层架15-1		
47	501000725	BF-6B29C4-01-03-01	bottom heating element	底发热管5	1	501001589 is the new code, the new and the old are interchangeable
	501001589	BF-6B29C4-01-03-01-T1		底发热管5-1		
48	305040097	BB-228AEG-01-03-06	bottom heating element seat	底加热座1	1	

# UBEMF73 Wiring diagram



old Wiring diagram



new Wiring diagram