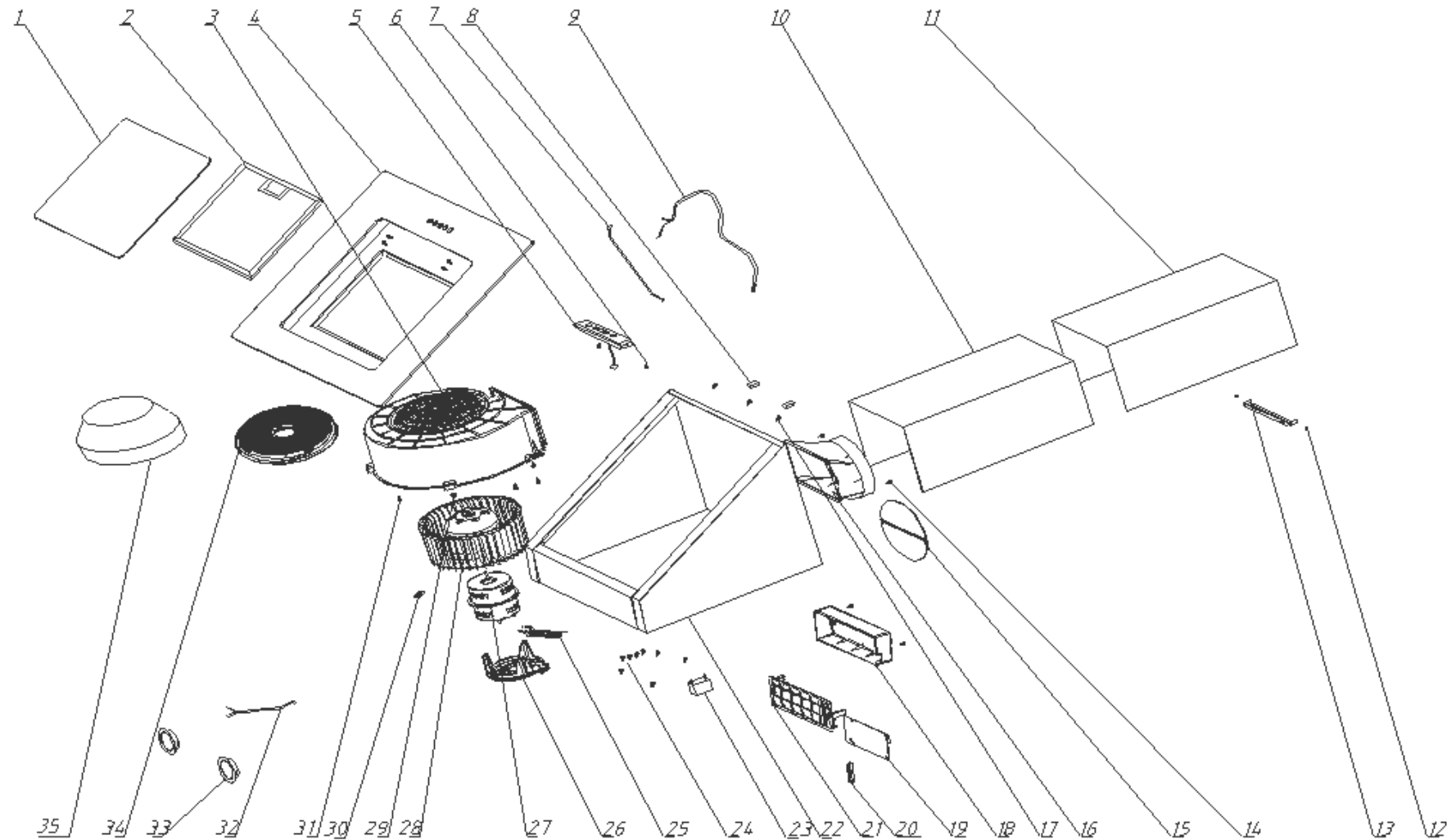


# Angled Glass Cooker Hood

Model Number UBHH60BK

Parts Manual

# Exploded Drawing



# Parts List

S/N	Ref.	Description	QTY	REMARK
35	7121105350	OUTLET TUBE REDUCER 150 TO 120MM	1	
34	7002080200	CHARCOAL FILTER	1	Optional
33	7135050120	LED LAMP	2	
32	7137100033	WIRING - LAMP	1	
31	9111351201	SCREW 3.5*12	3	
30	7121501020	CLAMP - POWER CABLE	1	
29	9131050001	NUT M5	1	
28	7005020200	CV BLADE WHEEL	1	
27	7131050001	MOTOR	1	
26	7121105030	MOTOR HOLDER	1	
25	7112105011	WIRE GROOVE	1	
24	9111351201	SCREW 3.5*12	6	
23	7132030010	CAPACITANCE	1	
22	7005014900	HOOD BODY	1	
21	7121105040	POWER SUPPLY BOX	1	
20	7121105330	WIRE CLAMP - POWER SUPPLY BOX	1	Amend
19	7134050150	POWER PCB	1	Use to 18W27
	7134050003	POWER PCB	1	Use from 18W38
18	7121105050	COVER - POWER SUPPLY BOX	1	
17	502010125	SCREW M4*8	3	
16	7121105100	OUTLET CONNECTOR	1	
15	7121103030	RETURN VALVE CN-2	2	Amend
14	9111351201	SCREW 3.5*12	2	
13	7112106081	HOLDER OF OUTSIDE CHIMNEY	1	
12	502010125	SCREW M4*8	2	
11	7110105443	INSIDE CHIMNEY (375MM) -Black	1	Use to 19W19
	7117105231	INSIDE CHIMNEY (375MM) -S/Steel	1	Use from 19W31
10	7110105433	OUTSIDE CHIMNEY (430MM) -Black	1	Use to 19W19
	7117105221	OUTSIDE CHIMNEY (430MM) -S/Steel	1	Use from 19W31
9	7136001709	POWER CORD	1	
8	7121105320	FIXING CLAMP - CHIMNEY	2	
7	7137135001	WIRE 500 - SWITCH	1	Use to 18W27
	7030300025	WIRE 450 - SWITCH	1	Use from 18W38
6	502010125	SCREW M4*8	2	
5	7134050120	CONTROL PCB	1	Use to 18W27

	7030300037	CONTROL PCB	1	Use from 18W38
4	7005016500	UBHH60BK: GLASS - LARGE	1	Use to 18W27
	7010100214	UBHH60BK: GLASS - LARGE	1	Use from 18W38
3	7121105010	MOTOR HOUSING	1	
2	7005060200	ALUMINIUM FILTER	1	
1	7005014500	GLASS - SMALL	1	