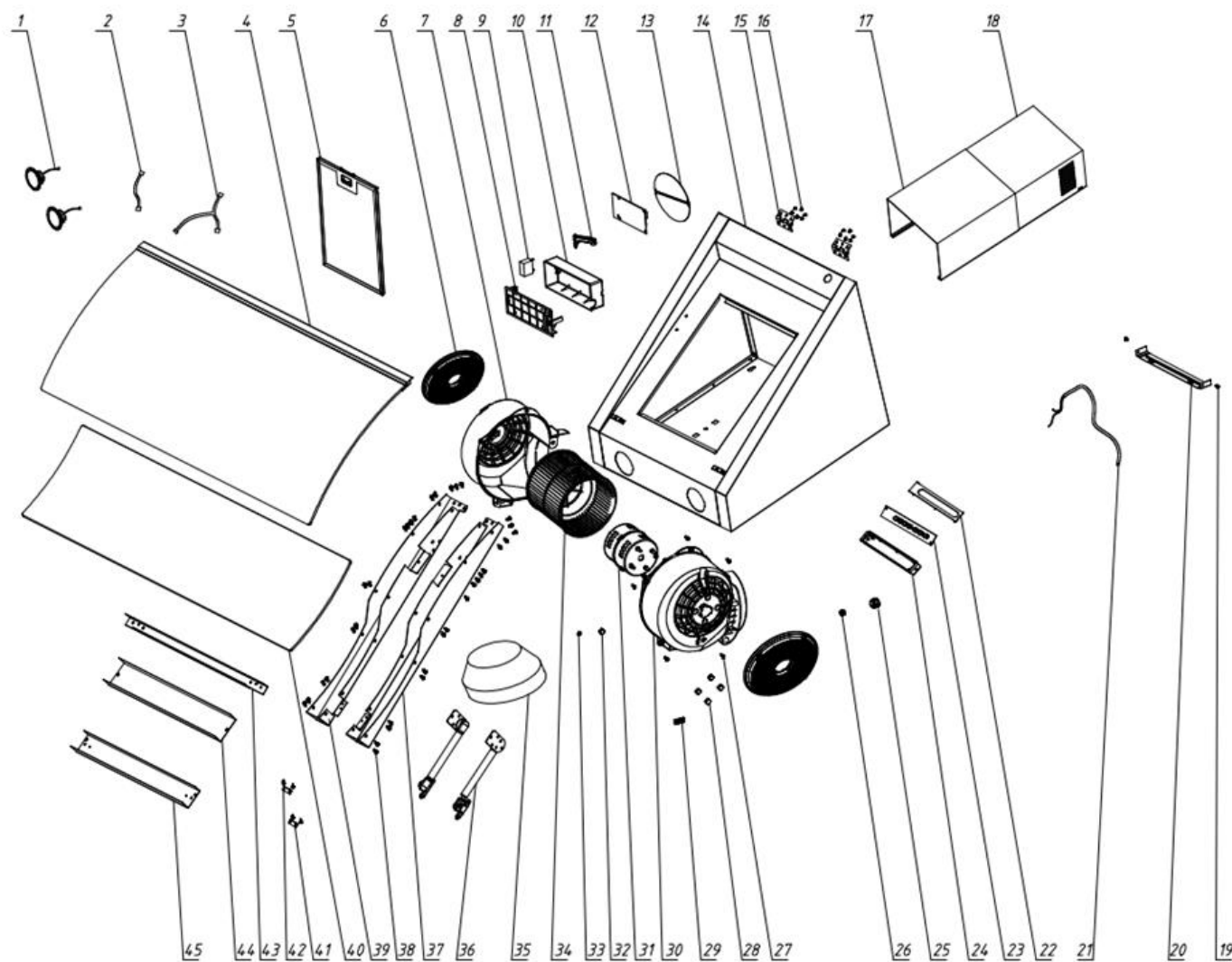


WAVE
Cooker Hood
Parts Manual

Exploded Drawing



Parts List

| S/N | Ref. | Description | QTY | REMARK |
|-----|------------|---------------------------------------------|-----|--------|
| 45 | 7020100035 | WAVE: GLASS CONNECTION BOARD - LOWER | 1 | |
| 44 | 7020100034 | WAVE: GLASS CONNECTION BOARD - INTERMEDIATE | 1 | |
| 43 | 7020100033 | WAVE: GLASS CONNECTION BOARD - UPPER | 1 | |
| 42 | 9111290802 | WAVE: SCREW ST2.9*8 | 4 | |
| 41 | 7111105041 | WAVE: TOP DOOR LOCK BEAD | 2 | |
| 40 | 7010100024 | WAVE: LOWER GLASS ASSEMBLY - BLACK | 1 | |
| 39 | 7020100031 | WAVE: GLASS CONNECTION BOARD - LEFT | 1 | |
| 38 | 502010125 | WAVE: SCREW M4*8 | 36 | |
| 37 | 7020100032 | WAVE: GLASS CONNECTION BOARD - RIGHT | 1 | |
| 36 | 7211405050 | WAVE: SPRING | 2 | |
| 35 | 7121105350 | WAVE: OUTLET TUBE REDUCER 150 TO 120MM | 1 | |
| 34 | 7121503030 | WAVE: CN BLADE WHEEL | 1 | |
| 33 | 502010038 | WAVE: FILLER | 1 | |
| 32 | 9132050002 | WAVE: NUT M5 | 1 | |
| 31 | 7131080020 | WAVE: MOTOR | 1 | |
| 30 | 7121103010 | WAVE: RIGHT SHELL OF WIND CABINET | 1 | |
| 29 | 7121503080 | WAVE: WIRE GROOVE 2 | 1 | |
| 28 | 9131050002 | WAVE: LOCKING NUT M5 | 4 | |
| 27 | 9111351201 | WAVE: SCREW 3.5*12 | 13 | |
| 26 | 7121104130 | WAVE: PROTECTION WIRE COVER | 1 | |
| 25 | 7121107010 | WAVE: PROTECTION WIRE COVER | 1 | |
| 24 | 7121106003 | WAVE: TOUCH CONTROL BOX | 1 | |
| 23 | 7134050001 | WAVE: CONTROL PCB | 1 | |
| | 7030300037 | WAVE: CONTROL PCB | 1 | Amend |
| 22 | 7121106004 | WAVE: COVER - TOUCH CONTROL BOX | 1 | |
| 21 | 7136001707 | WAVE: POWER CORD WITHOUT PLUG | 1 | |
| 20 | 7112106081 | WAVE: BRACKET - CHIMNEY | 1 | |
| 19 | 16000009 | WAVE: SCREW M4*9 | 2 | |
| 18 | 7110105443 | WAVE: CHIMNEY - INNER | 1 | |
| 17 | 7110105433 | WAVE: CHIMNEY - OUTER | 1 | |

| | | | | |
|----|------------|------------------------------------|----|----------|
| 16 | 9111401201 | WAVE: SCREW ST4*12 | 12 | |
| 15 | 9111400804 | WAVE: HINGE | 2 | |
| 14 | 7010100022 | WAVE: BOX ASSEMBLY - BLACK | 1 | |
| 13 | 7121503060 | WAVE: RETURN VALVE | 2 | |
| 12 | 7134050003 | WAVE: POWER PCB | 1 | |
| 11 | 7121105330 | WAVE: WIRE GROOVE 4 | 1 | |
| 10 | 7121105050 | WAVE: COVER - POWER SUPPLY BOX | 1 | |
| 9 | 7132030030 | WAVE: CAPACITANCE | 1 | |
| 8 | 7121105040 | WAVE: POWER SUPPLY BOX | 1 | |
| 7 | 7121103020 | WAVE: LEFT SHELL OF WIND CABINET | 1 | |
| 6 | 7003080100 | WAVE: CHARCOAL FILTER | 2 | Optional |
| 5 | 7001060100 | WAVE: ALUMINIUM FILTER | 1 | |
| 4 | 7010100023 | WAVE: UPPER GLASS ASSEMBLY - BLACK | 1 | |
| 3 | 7137100033 | WAVE: WIRING - LAMP | 1 | |
| 2 | 7137100057 | WAVE: WIRE 850 - TOUCH SWITCH | 1 | |
| 1 | 7135050003 | WAVE: LED LAMP | 2 | |