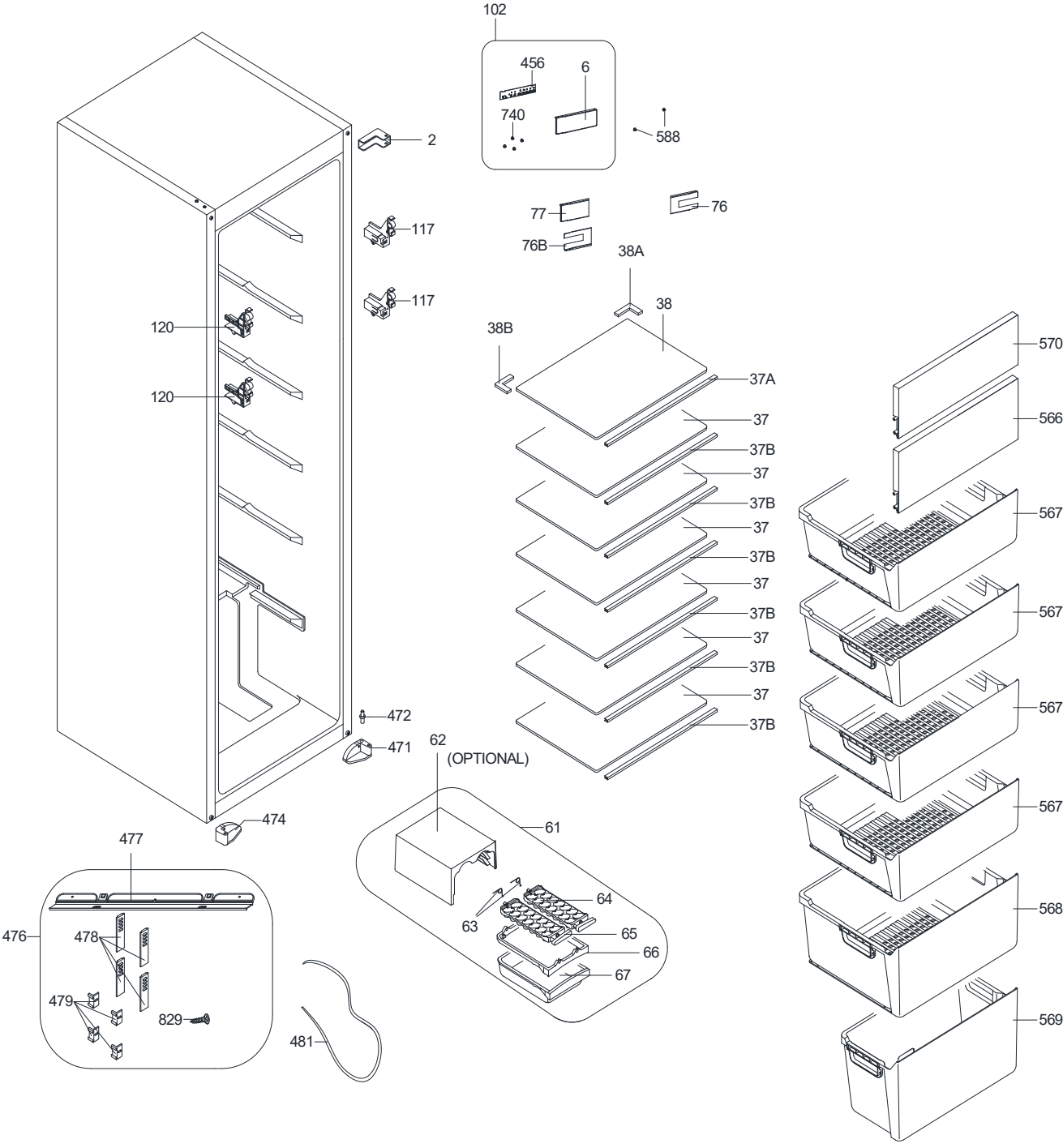
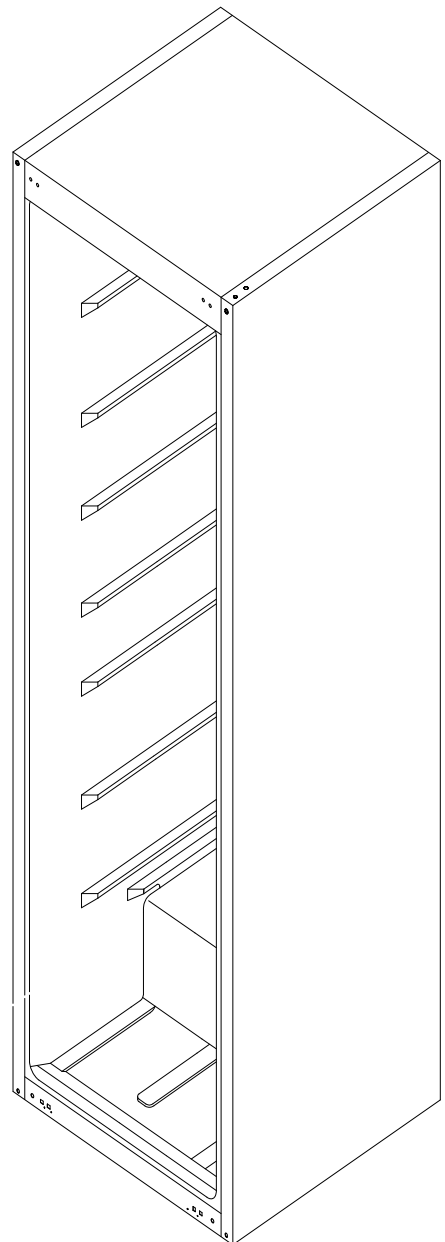
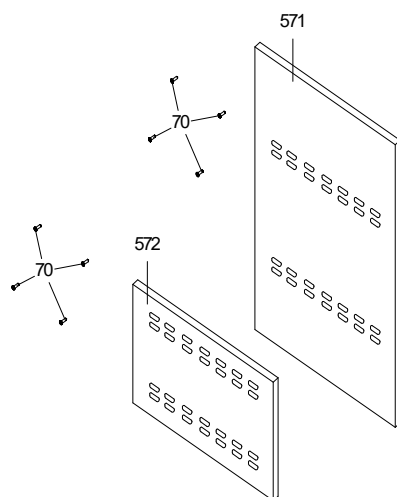
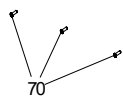
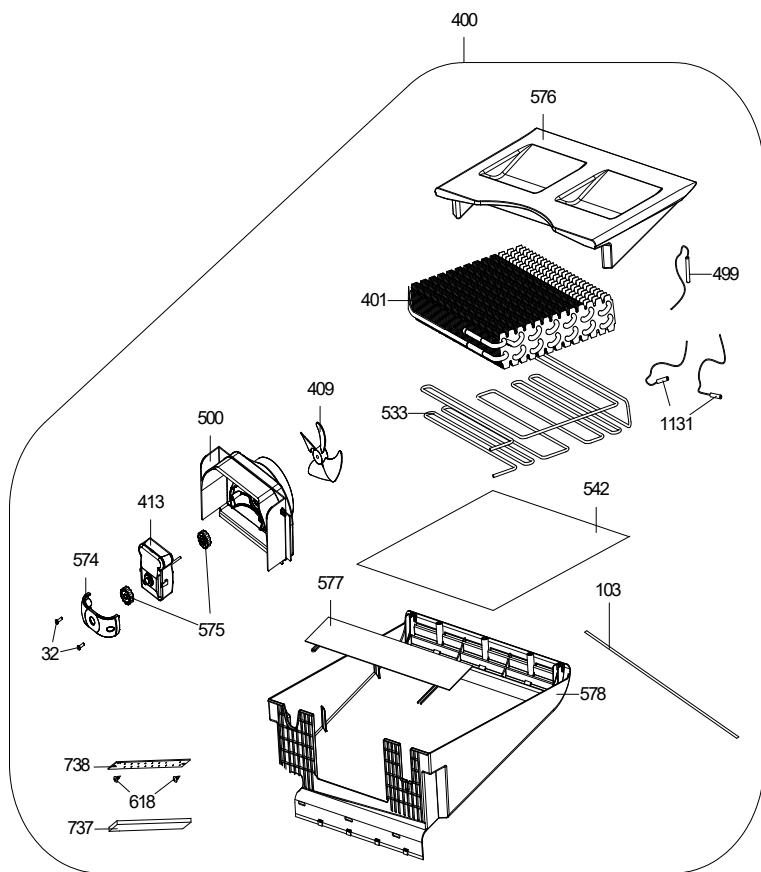


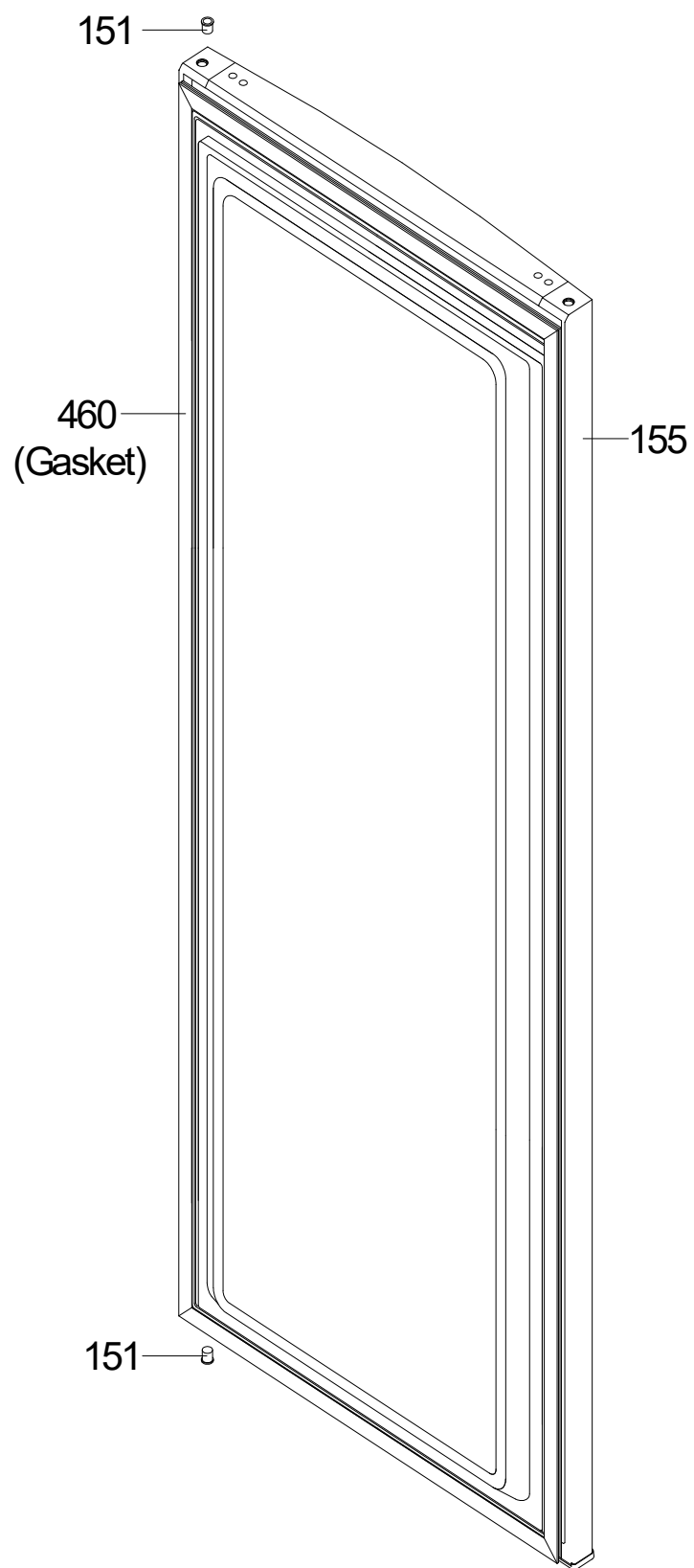
Model Number FFTFZ60 Parts Manual



POSITION NUMBER	PART NAME
2	BOTTOM/TOP HINGE SS
6	HEAD PANEL /2791-LED
37	GLASS SHELF/2791
37A	FREEZER TOP GLASS SHELF TRIM/2791
37B	FREEZER GLASS SHELF TRIM/2791
38	GLASS SHELF ICEMATIC/2791
38A	GLASS SHELF BACK CORNER TRIM RIGHT
38B	GLASS SHELF BACK CORNER TRIM LEFT
61	ICEMATIC
62	BUZMATIK COVER
63	ICE TRAY SPRING
64	ICE TRAY
65	ICE TRAY KNOB
66	ICEMATIC FRAME
67	ICE BOX
76	HEAD PANEL COVER 2791 RIGHT
76B	HEAD PANEL COVER 2791 LEFT
77	HEAD PANEL COVER 2791
102	HEAD PANEL GR/2795
117	F COVER SUPPORT RIGHT
120	F COVER SUPPORT LEFT
455	SCREW KA 30*6 YSB-F
456	DB/BDD53/2791
471	FOOT SS/ANK(RIGHT)
472	BOTTOM HINGE PIN SS
474	FOOT SS/ANK(LEFT)
476	SS ASSEMBLY KIT/DD 54 CM
477	TOP BRACKET/ANK
478	SS DOOR REAL/1400 ANK
479	SS DOOR GUIDE/1400 ANK
481	SEALING/3200 ANK-SS
566	F FLAP COVER GR/319
567	F.TOP BASK.GR/2791
568	FREEZER BIG BASK.GR/2791
569	FRZ BOTTOM BASK.GR/319
570	F FLAP COVER GR/2791
588	SCREW ST 4.2*14 SPECIAL 17-C
740	SCREW 22*50 SPECIAL 4-F
829	SCREW TT M4*17 OZEL2-C



POSITION NUMBER	PART NAME
32	SCREW KA 40*18 YSB-C-INOX
70	SCREW KA 40*14 YSB-R-F-INOX
103	HEAD PANEL SEAL
400	FIN EVAP GR.
401	FIN EVAP ASSY.
409	PROPELLER/391
413	EVAP FAN MOTOR
499	THERMAL FUSE
500	FAN BOX
533	FIN EVAP HEATER/2791
542	CASE HEATER GR/2791
571	MULTIFLOW COVER TOP/2791
572	MULTIFLOW COVER BOTTOM/2791
574	FAN BOX MOTOR FIXER/391
575	FAN MOTOR SEAL/391
576	FIN EVAP PAD/391
577	FIN EVAP CASE HEATER
578	FIN EVAP BOX/2791
618	SCREW 30*8 YSB-F-INOX
738	LED STRIP/2835*6/8*129MM/12V/373
737	LED COVER/243
1131	SENSOR/VF

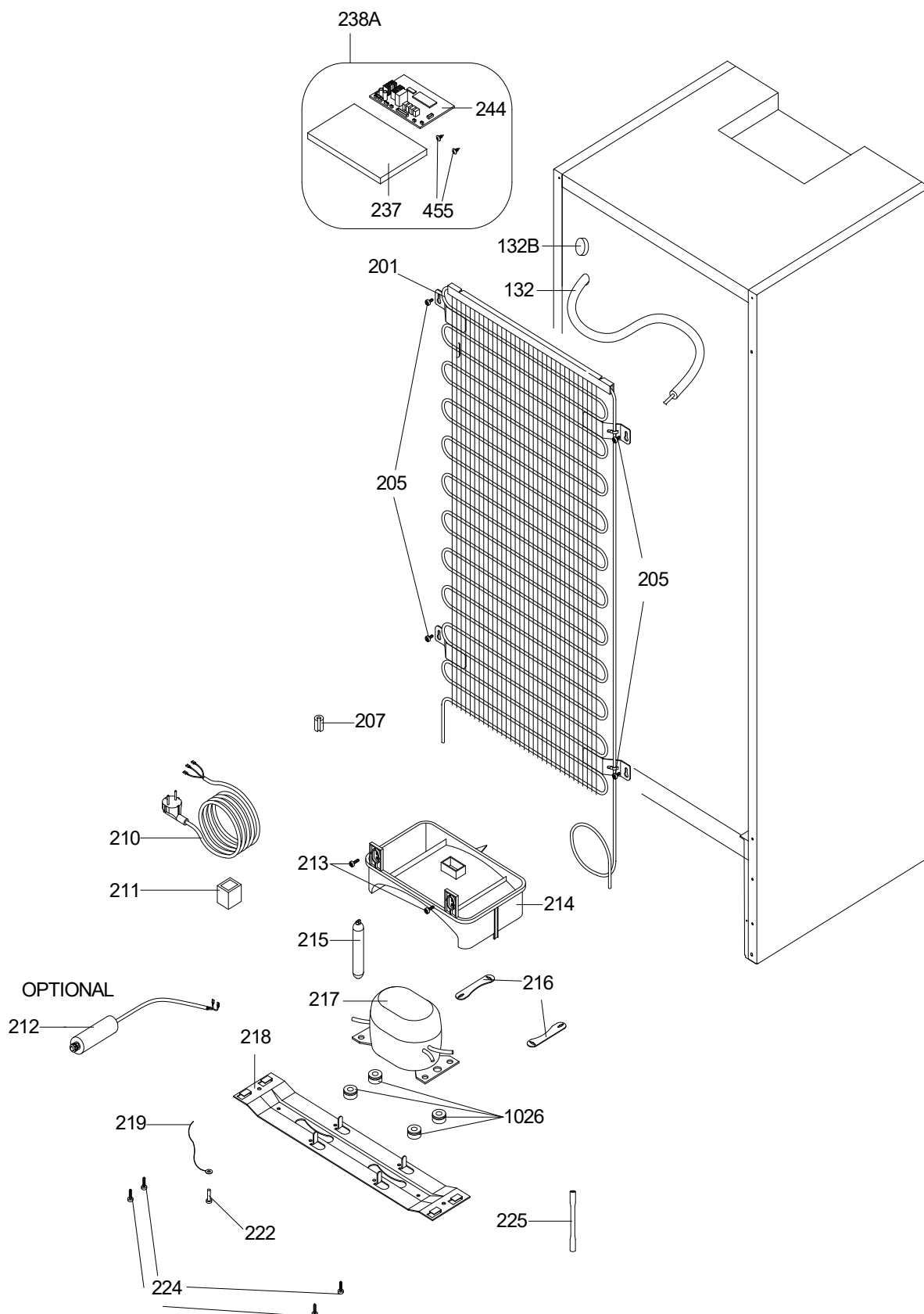


POSITION NUMBER	PART NAME
151	BUSHING/1400 ANK
155	DOOR ASSY/2791 ANK
460	DOOR GASKET 2795

ABBREVIATIONS :

ASSY : ASSEMBLY
R : REFRIGERATOR
F : FREEZER

DECEMBER 2018



POSITION NUMBER	PART NAME
132	COVER TUBE
132B	BACK COVER
201	CONDENSER
205	SCREW ST 4.8*13 YSB-T-C
207	RUBBER CONDANSER
210	POWER CORD
211	OVER LOAD RELAY
212	CAPACITOR (<i>OPTIONAL</i>)
213	SCREW 4.2*9.5 YSB-C
214	EVAPORATING TRAY GR
215	DRYER
216	COMP FIXING BRACKET
217	COMPRESSOR
218	COMP.BASEMENT
219	EARTH WIRE/WASHER
222	SCREW TT M4*6 YSB-T-F
224	SCREW KA 50*14 YSB-F
225	SERVICE TUBE
237	MAINBOARD COVER 2791E
244	MAIN B./BDA52/NOSW-23312183
455	SCREW KA 30*6 YSB-F
1026	COMPRESSOR RUBBER
238A	MAINBOARD COVER GR 2791E

ID No	Part Number	Part Description
222	20865033	VIDA TOPRAK.KABLO/TRT(37023688)FANTOM
155	20870852	DOOR ASSY/2791 ANK S-CAP(S.W)
151	42004499	BUSHING/1400 ANK
460	42155754	GASKET 2791-2795 BUILT IN DETACH-I (SW)
217	32034249	COMP.LC100CY1/4UF/BT60-105/JPQV-15/BSZ
209	32036154	SUP.CAB.GR.LC100CY1/BSZ/4UF/2,5M/UK
212	32007063	CAPACITOR 4uF/B-S3/6.3
210	32007439	POW.CRD/2.5M/UK
211	32034570	OVER L.GR.LC100CY1/BT60-105/JPQV-15/BSZ
219	32036742	EARTH WIRE(PGYB)WASHER/0,50
456	32038214	DB/BDD69-3/FREEZ/NP/YL//RV6/V04-23594686
740	37015179	SCREW KA YSB 2.2*5 F ST
6	42179776	HEAD PANEL WITH LED DISP(FOR BUILT-IN)
400	32038783	FIN EVAP GR/2791(RAD)LEDLI/PLKREZ/SS/ICM
1131	32003768	SENSOR/VF/R16K3/1660MM/DOUBLE
533	32030053	FIN EVAP HEATER/2791/230V/180W
499	32030054	TERMAL FUSE SINGLE/500
577	32030749	CESE HEATER/2791/230V/35W
542	32030752	CASE HEATER GRB 2791/230V/35W
738	32034650	LED ST/2835*6/8*129MM/BDL3 (I)
413	32035963	RADIAL FAN MOTOR MFC0361V3 120MM
401	37027370	FIN EVAP ASSY/2791
132	42040560	COVER TUBE
151	42128089	BUSHING/345P(NAT) RV1
578	42152848	FIN EVAP BOX/2791(S.W.)
737	42156712	LED COVER/243
500	42212270	RADIAL FAN HOLDER 243
576	52189466	FIN EVAP PAD/2791
238A	32042217	MAINBOARD COVER GR 2791E V0/NAT BD46 E-F
244	32042218	MB/BDA46/2791/E-F/R4/V127.41-23648237
740	37015179	SCREW KA YSB 2.2*5 F ST
237	42156494	MAINBOARD HOUSING 2791E/V0(VERS2)
224	35000728	SCREW KA 50*14 YSB-F
213	35000743	SCREW 4.2*9.5 YSB-C
225	35002664	SERVICE TUBE(105*6*0,7)TYPE B
205	35009792	SCREW ST 4.8*13 YSB-T-C
588	37022711	SCREW S YPB 4.2*14 C ST
222	37023688	SCREW TT M4*6 YSB-T-F
201	37027005	CONDENSER 54CM/28 PASS/4,00*0,5MM(2HAVS)
472	37028128	BOTTOM HINGE PIN SS/BUILT-IN RV1
2	37028246	BOTTOM/TOP HINGE SS/1400 BUILT HEX PIN
215	37029499	DRYER(XH9,0.40MM,5.5GR)SINGLE
7	37032597	SCREW TT M5*16 YSB-F

216	37032974	COMP. FIXING BRACKET
70	37035782	SCREW KA 40*14 YSB-C-A3K
218	37035919	COMP BASEMENT/2791
510	37036052	SCREW M,YHB,5x14,F,ST,A3K,TT, LAMELLA
117	42031901	F COVER SUPPORT R/390(S.W.)
120	42031903	F COVER SUPPORT L/390(S.W.)(S.W.)
12	42032778	MIDDLE HINGE SREW CAP(BIG)S.W.(NEW)
11	42032779	MIDDLE HINGE SREW CAP(SMALL)NEW(S.W.)
132B	42118012	BACK COVER
214	42118207	EVAPORATING TRAY GR/2500A++ S.W-FR
214	42189705	EVAPORATING TRAY/2500 ANK (NAT)-FR
76	42152836	HEAD PANEL COVER 2791 RIGHT S.W
76B	42152837	HEAD PANEL COVER 2791 LEFT S.W
77	42152838	HEAD PANEL COVER 2791 S.W
572	42152849	MULTIFLOW COVER BOTTOM 2791(S.W.)
571	42152850	MULTIFLOW COVER TOP 2791(S.W.)
207	42155463	RUBBER CONDANSER MUTUAL ANTIVIBRASYON
93-569	42160701	BOTTOM BASK.GR/319(TRANS-NAT)
91	42160703	F FLAP COVER 319 TRAN-NAT
477	42162359	TOP BRACKET/ANK(3 HOLE)(S.W) TAPED
477	42034032	TOP BRACKET/ANK(3 HOLE)(S.W)
474	42165565	FOOT SS/ANK(LEFT) RV1 PP40KA
471	42165566	FOOT SS/ANK(RIGHT) RV1 PP40KA
1026	42176268	MUTUAL COMPRESSOR RUBBER
18	42178383	ICE TRAY/170
476	42180269	SS ASM KIT/DD 54 CM RV2 (WITHOUTBRACKET)
213	35000743	SCREW 4.2*9.5 YSB-C
480	37001045	SCREW KA YHB 4*17 C ST CHIPBOARD
829	37012412	SCREW M YSB 4*17 C ST TT
480	37030634	SCREW,P,YSB,40x13,C,ST,A3K,SUNTA
479	42033307	SS DOOR GUIDE/1400 ANK(S.W.)
478	42147208	SS DOOR REAL/1400 SW RV1
478B	42180204	SS DOOR RAIL COVER/1400 ANK(S.W.)
211B	42185442	COMP.COVER/DONPER/L1B
481	42217911	FURN. SPACE COVER GASKET/3200BI-SS (SW)
91	42228599	F FLAP COVER 2791TRAN-BLUE RV1
37	47015329	GLASS SHELF/2791
102	32038218	HEAD PANEL GR/2795
37B	42219574	FREEZER GLASS SHELF TRIM
570	42228599	F FLAP COVER GR/2791
566	42160703	F FLAP COVER GR/319
567	42160717	F.TOP BASK.GR/2791
568	42160719	FREEZER BIG BASK.GR/2791