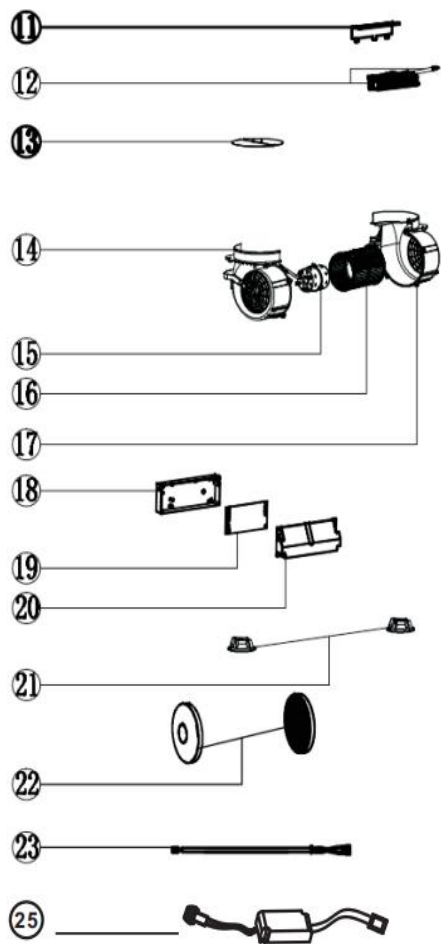
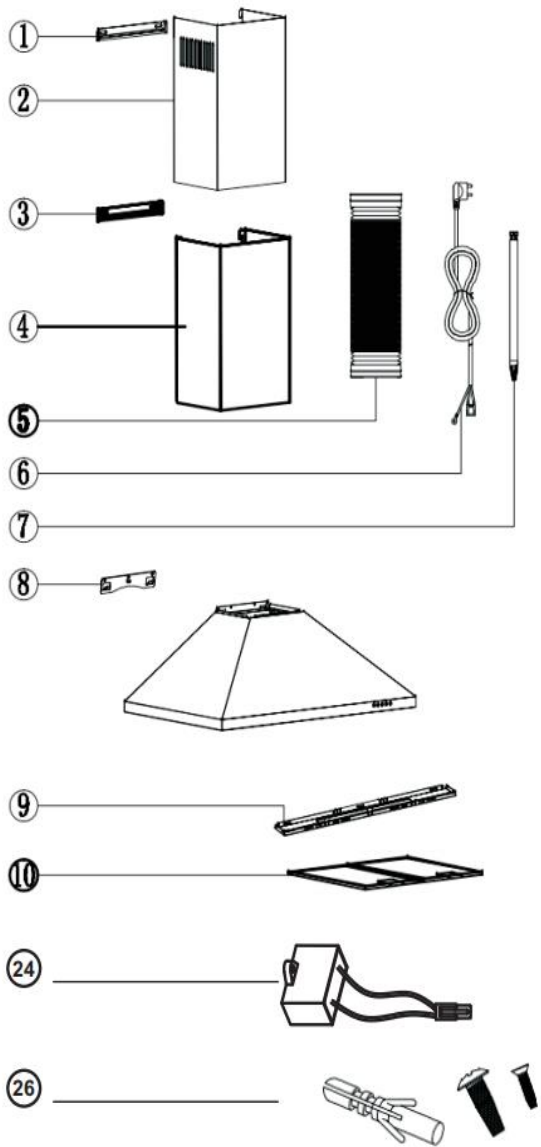


Cooker Hood

Model Number CHIM60BKPF

Parts Manual

Exploded Drawing



Parts List

S/N	Ref.	Description	QTY	REMARK
1	B23-TD08-006-PX	TD INNER CHIMNEY BRACKET	1	
2	B21-TD08-008-TB2	TD INNER CHIMNEY	1	
3	B23-TD08-005-PX	TD OUTER CHIMNEY BRACKET	1	
4	B21-TD08-007-TB2	TD OUTER CHIMNEY	1	
5	B36-TT03-018-XG	Φ150 SMOKE TUBE	1	optional
6	B67-TY04-005-XB	WIRE ONLY, WITHOUT PLUG	1	
7	B67-TY03-031-XX2	SWITCH CABLE	1	
8	B23-TG18-027-PX	BRACKET	1	
9	B21-TD08-037-TB2	REAR LAMPSHADE -60 BLACK	1	
10	B35-TG01-036-XX	5 LAYERS ALUMINIUM FILTER	2	
11	B23-TD06-007-XX	SWITCH HOLDER	1	
12	B60-TY05-005-XX	PUSH BUTTON -M02	1	
13	B30-TG18-015-JB	Φ150 VALVE	2	
14	B30-TD02-026-JB	HOUSING S -LEFT PART	1	
15	B61-TY02-004-XX	HOUSING S MOTOR	1	
16	B30-TD02-016-JB	FAN	1	
17	B30-TD02-027-JB	HOUSING S -RIGHT PART	1	
18	B30-TD08-018-JB	E14 ELECTRIC CONTROL BOX(BOTTOM)	1	
19	B63-TY12-281-XX	PCB	1	Old
	B63-TY12-281-XX3	PCB		New from order 2018/04/0000098 18W20
20	B30-TD08-019-JB	E14 ELECTRIC CONTROL BOX(COVER)	1	
21	B62-TY01-016-XX	LED LAMP -L07	2	
22	B15-TD02-024-JB	CHARCOAL FILTER	2	optional
23	B67-TY03-022-XX	LED LIGHT WIRE	1	
24	B64-TY08-249-XX1	CAPACITOR	1	
25	B63-TY07-011-XX	LED DRIVE POWER BOX	1	Old
	B63-TY07-011-XX1	LED DRIVE POWER BOX	1	New from order 2018/04/0000863 18W40
26	C08-1000-001-BX	SCREW BAG	1	