



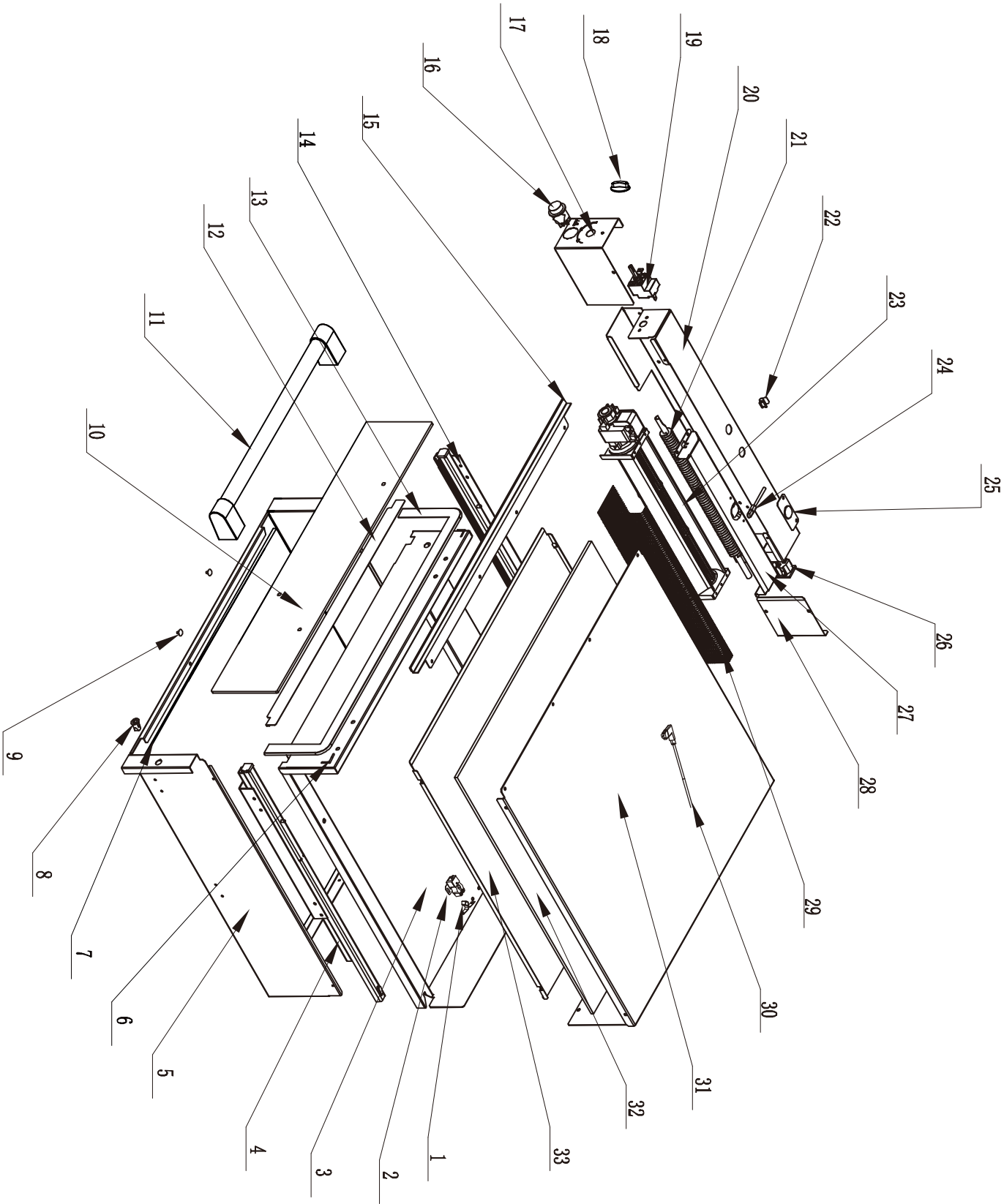
Warming Drawer:AWD14.1

Version:00

Date:2016-10-12

Product reference code:AWD14.1

AWD14.1 Exploded drawing



| | | | |
|-------|--------------------|-------------|------------|
| | | | |
| 00 | New document | Eason | 2016.09.22 |
| Index | Modify description | Modified by | Date |

AWD14.1 parts list

| NO. | Part code | Part description | QTY |
|-----|-------------|----------------------------------|-----|
| 1 | 33237012 | door lock block | 1 |
| 2 | 33133000 | lock assembly | 1 |
| 3 | 33137000 | drawer main body | 1 |
| 4 | 33318013 | left telescopic runner | 1 |
| 5 | 33029005 | outer panel of the drawer | 1 |
| 6 | 33009002 | the connect strap for door seal | 2 |
| 7 | 33239004 | anti-slip mat | 1 |
| 8 | 33239002 | fixing plastic washer | 2 |
| 9 | 33237011 | slide block for drawer main body | 2 |
| 10 | 33101403 | glass panel of the drawer | 1 |
| 11 | 30400700002 | Handle-H1 | 1 |
| 12 | 33004003 | panel fixing board | 1 |
| 13 | 33218003 | door seal assembly | 1 |
| 14 | 33318014 | right telescopic runner | 1 |
| 15 | 33031004 | front board | 1 |
| 16 | 33311004 | push button switch | 1 |
| 17 | 33004006 | switch fixing board | 1 |
| 18 | 33220021 | Knob 13 | 1 |
| 19 | 33311003 | temperature selector | 1 |
| 20 | 33004005 | fan motor casing | 1 |
| 21 | 33303021 | heating tube | 1 |
| 22 | 33034002 | temperature selector clip | 2 |
| 23 | 33315005 | fan assembly | 1 |
| 24 | 33308002 | heat protector | 1 |
| 25 | 33004007 | heat protector fixing board | 1 |
| 26 | 33305007 | socket | 1 |
| 27 | 33004004 | heating tube fixing plate | 1 |
| 28 | 33005003 | mesh fixing plate | 1 |
| 29 | 33061001 | mesh | 1 |
| 30 | 33304079 | power code | 1 |
| 31 | 33031006 | up cover plate | 1 |
| 32 | 33120004 | Insulation sponge | 1 |
| 33 | 33031005 | up cover plate | 1 |