



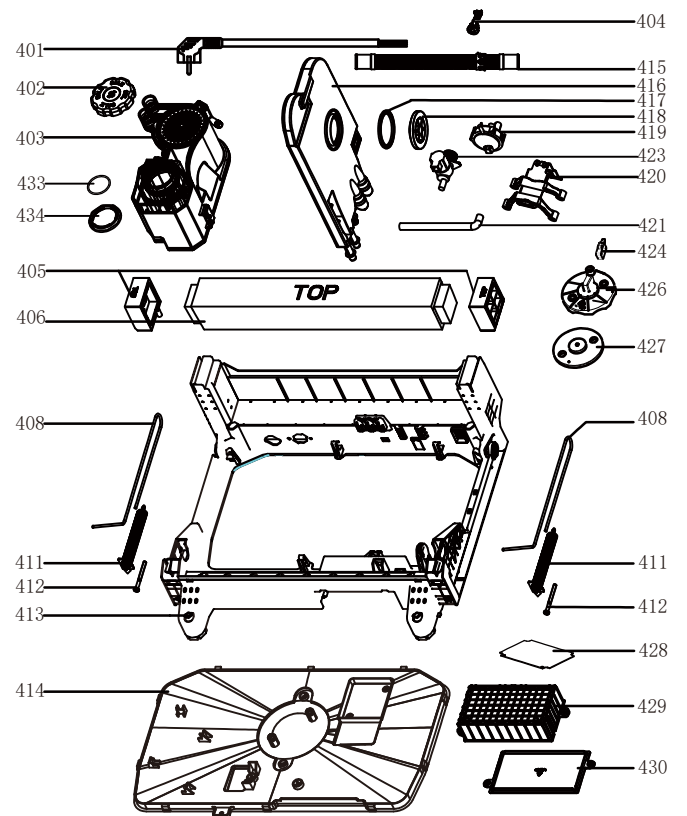
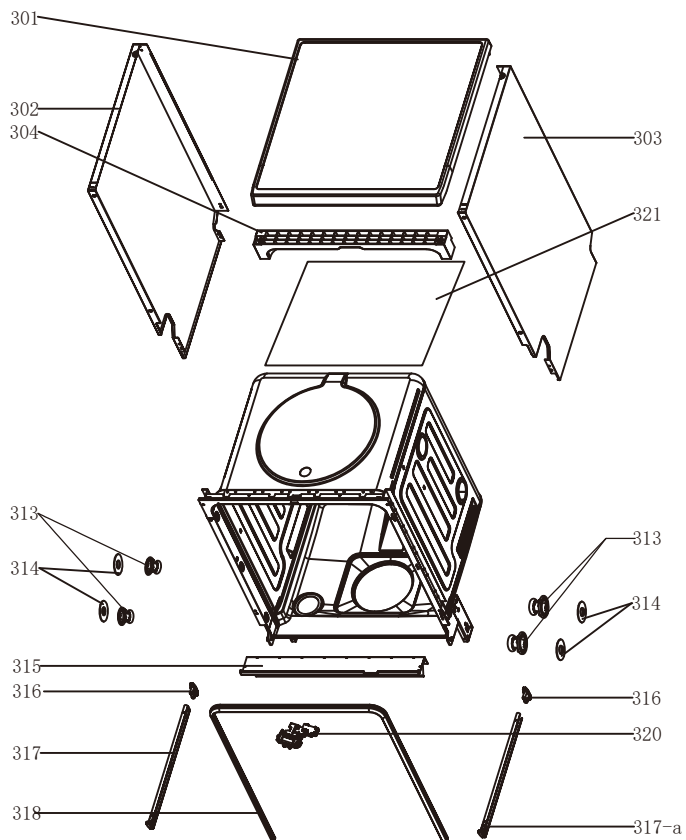
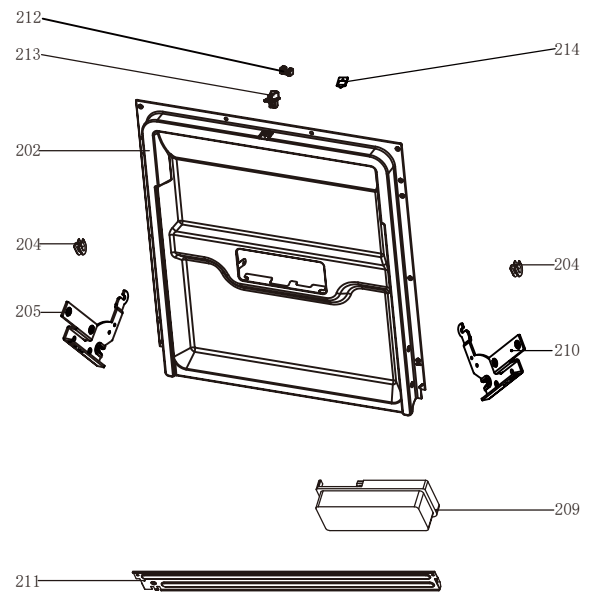
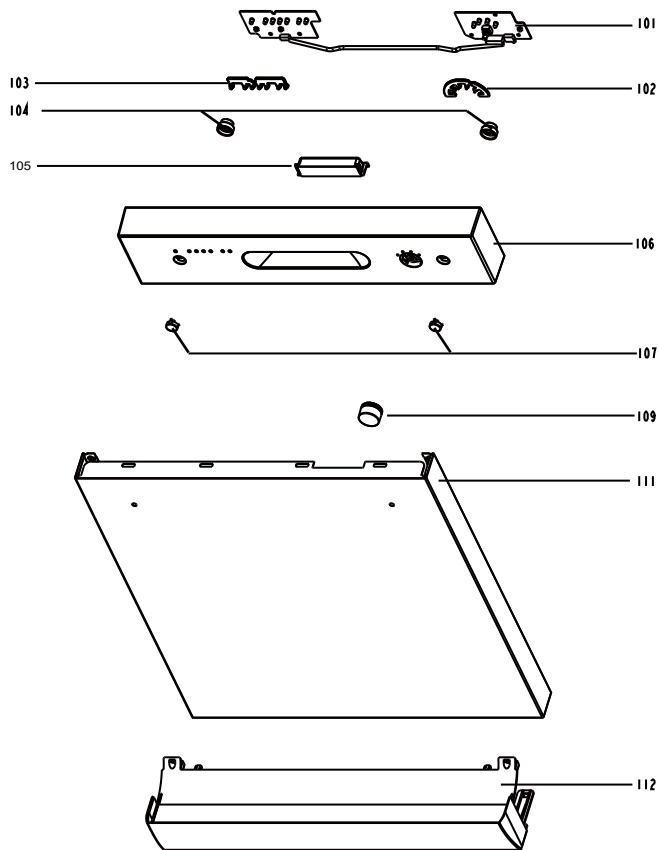
Dishwasher:DW60MW

Version:00

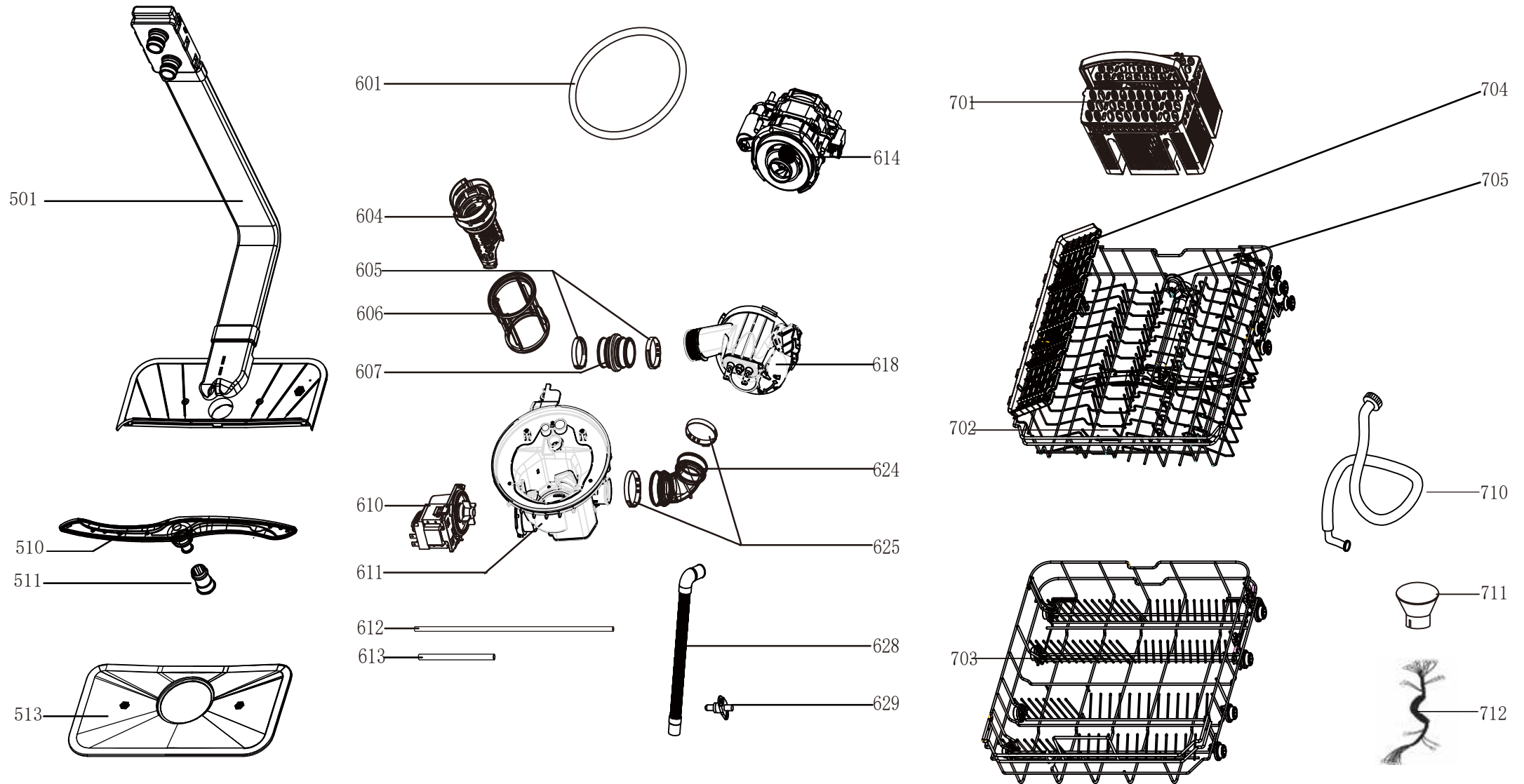
Date:2016-04-27

Product reference code: DW60MW

# DW60MW Exploded drawing(1)



# DW60MW Exploded drawing(2)



# DW60MW parts list

NO.	Ref no.	Midea new Part No.	Description	Qty.
105	673001800557	12176000002240	doorknob cover	1
107	673000892160	12176000000126	key	2
111	672001801080	12276000006660	out door	1
112	673001101123	12176000004079	baseboard	1
202	672002200523	12276000005191	inner door assembly	1
204	672002300049	12176000003629	friction strip hooking clamping	2
205	672001400062	12276000001731	left hinge assembly	1
209	674000800070	17476000001467	dispenser	1
210	672001400061	12276000001778	right hinge assembly	1
211	672001200061	12276000001852	hinge join board	1
212	673001320041	12176000008565	Lock buckle fixing block	1
213	673001320039	12176000009495	door lock hook	1
214	673000905033	12676000001038	Waterproof silica gel pad	1
302	672001602037	12276000000972	left side panel	1
303	672001600542	12276000001246	right side panel	1
304	673003100024	12176000003869	upper back support	1
313	673001401022	12176000010412	rail support assembly	4
314	673001300555	12176000008573	basket guider supporting holder	4
315	672002300110	12276000001818	anti-noise borad	1
316	673001300803	12176000008496	upper basket guider link stopper(back)	2
317	672001700025	12276000001357	upper basket guider(left)	1
317-a	672001700026	12276000001360	upper basket guider(right)	1
318	673001700132	12676000000859	tank gasket	1
320	674000301022	17476000000035	door switch	1
321	673000102014	12176000010248	back cover board	1
401	674000000186	17476000000312	power cord	1
402	673002800187	12176000010640	softener cover	1
403	674000700049	17476000001331	softener	1
404	673001400083	12176000009490	power cord clasper	1
405	673002400270	12176000014945	weight block holder	2
406	676000600017	12776000000005	weight block	1
408	673001001006	12976000000392	door rope	2
411	672000100110	12976000000133	door spring assembly	2
412	672001100016	12976000001001	adjust screw of door spring	2
413	673000100064	12176000003022	tray assembly	1
414	673000101202	12176000003092	base cover	1
415	673000900354	12676000000138	drain hose assembly	1
416	673002700611	12176000003906	air breather assembly	1
417	673001500107	12676000000713	seal	1
418	673001600088	12176000009541	air breaker nut	1
419	674000302020	17476000001222	pressure switch	1
421	673000900289	12676000000140	inlet hose of air breather	1
423	674000200054	17476000001144	inlet valve	1
424	674010030006	17476000001137	overflow switch	1
426	673001400414	12176000003125	overflow switch seat	1
427	673001490013	12876000000050	sleeve cover	1
429	673002400223	12176000003751	pcb seat	1
430	673002400224	12176000003853	PCB Box	1
433	673001500119	12676000000707	softener gasket	1
434	673001600074	12176000009513	softener nut	1
501	673000903005	12176000009430	inner pipe	1
510	673000330015	12176000009161	lower sprayer	1
511	673001300548	12176000008645	sprayer seat	1
513	673002500134	12176000003689	plane filter	1
601	673001500081	12676000000823	sump gasket	1
604	673001300644	12176000009640	filter handle	1
605	672000700007	12976000000327	396 clamp	2
606	673002500111	12176000003676	cylinder filter	1
607	673000900406	12676000000146	inlet pipe	1
610	674000600168	11001011000449	Permanent magnet synchronous pump	1
611	673000700129	12176000009424	sump assembly	1
612	673000902001	12676000000651	pvc pipe	1
613	673000902000	12676000000168	outlet hose of softener	1
614	674005600112	17476000001561	induction pump	1
618	674001100084	17476000001408	heating elements	1
624	673000900407	12676000000100	inlet pipe	1
625	672000701001	12976000000308	clamp	2
628	673000903015	12676000000947	inner drain pipe	1
629	674000900053	17176000000311	temperature sensor	1
701	673003200063	12176000002705	cutlery basket	1
702	672000810662	12976000000724	basket assembly	1
704	673003200058	12176000002821	Knife and fork rack	1
705	673000310035	12176000009173	MIDDLE SPAYER ASSEMBLY	1
711	673002200165	12176000010312	salt filler	1
712	674000102202	17476000000726	wiring harness	1