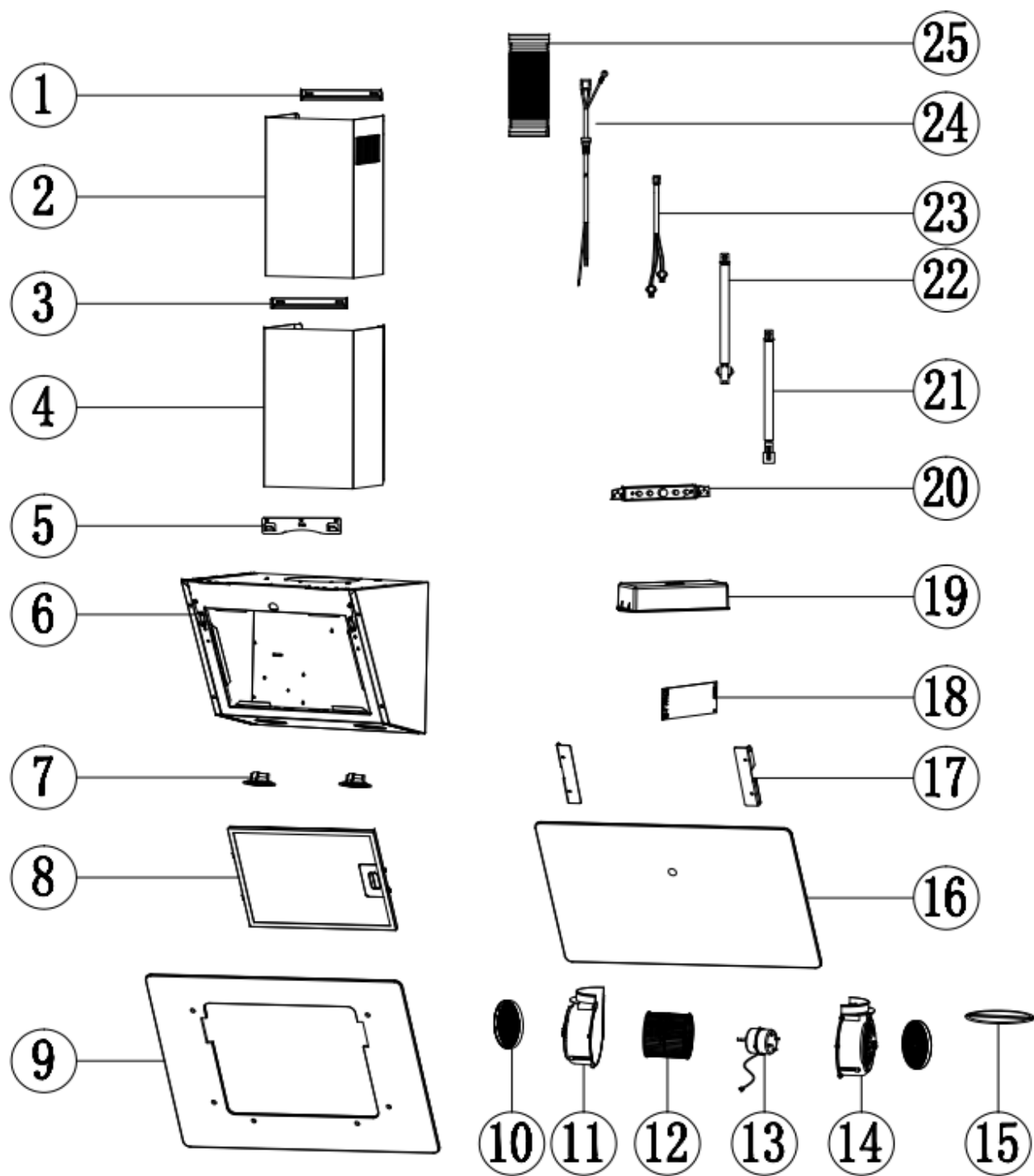


Cooker Hood

Model Number ICON60H

Parts Manual

Exploded Drawing



02			
01			
00			
Index	Modify description	Modified by	Date

Parts List

ID No	Part Number	Part Description	Qty	REMARK
1	B23-TD08-006-PX	TD INNER CHIMNEY BRACKET	1	
2	B21-TD08-008-TB2	TD INNER CHIMNEY-BLACK	1	
3	B23-TD08-005-PX	TD OUTER CHIMNEY BRACKET	1	
4	B21-TD08-007-TB2	TD OUTER CHIMNEY-BLACK	1	
5	B23-TG18-027-PX	WALL BRACKET	1	
6	B11-TV27-028-XB	GLASS FIXING CLIP-LEFT	1	
	B11-TV27-029-XB	GLASS FIXING CLIP-RIGHT	1	
7	B62-TY01-016-XX	LED LAMP	2	
8	B35-TG01-036-XX	5 LAYERS ALUMINIUM FILTER	1	
9	B33-TV20-001-XB(Old)	GLASS FRAME(OLD)	1	Use to 19W49
	B33-TV20-001-XB(New)	GLASS FRAME (NEW)	1	Use from 19W50
10	B15-TF08-097-JB	CHARCOAL FILTER	2	Optional
11	B30-TI01-029-JB	HOUSING D -LEFT PART	1	
12	B30-TT03-012-JB	FAN	1	
13	B61-TY02-029-XX	HOUSING D MOTOR	1	
14	B30-TI01-028-JB	HOUSING D -RIGHT PART	1	
15	B30-TG18-015-JB	Φ150 VALVE	1	
16	B33-TV20-003-XB	GLASS-SMALL	1	
17	B21-TV27-002-XB	GLASS FLEXIBLE CLIP-LEFT	1	
	B21-TV27-003-XB	GLASS FLEXIBLE CLIP-RIGHT	1	
18	B63-TY07-015-XX	PCB	1	
19	B30-TG18-017-JB	ELECTRIC CONTROL BOX	1	Use to 19W49
	B30-TG18-016-JB	ELECTRIC CONTROL BOX	1	Use to 19W49
	B30-TF27-021-JB	ELECTRIC CONTROL BOX	1	Use from 19W50
	B30-TF27-022-JB	ELECTRIC CONTROL BOX	1	Use from 19W50
20	B63-TY07-262-XX	SWITCH-T02	1	
21	B67-TY03-040-XX	SWITCH WIRE- SECTION A	1	Use to 20W38
	B67-TY03-279-XX	CONNECTION FOR SWITCH AND PCB	1	Use from 20W39
22	B67-TY03-009-XX	LIGHT WIRE	1	
23	B67-TY04-005-XB	WIRE ONLY, WITHOUT PLUG	1	
24	B36-TT03-018-XG	Φ150 SMOKE TUBE	1	Optional
25	C08-1000-001-BX	SCREW BAG	1	