



Induction hob with integrated ventilation:

ICONDD70.1

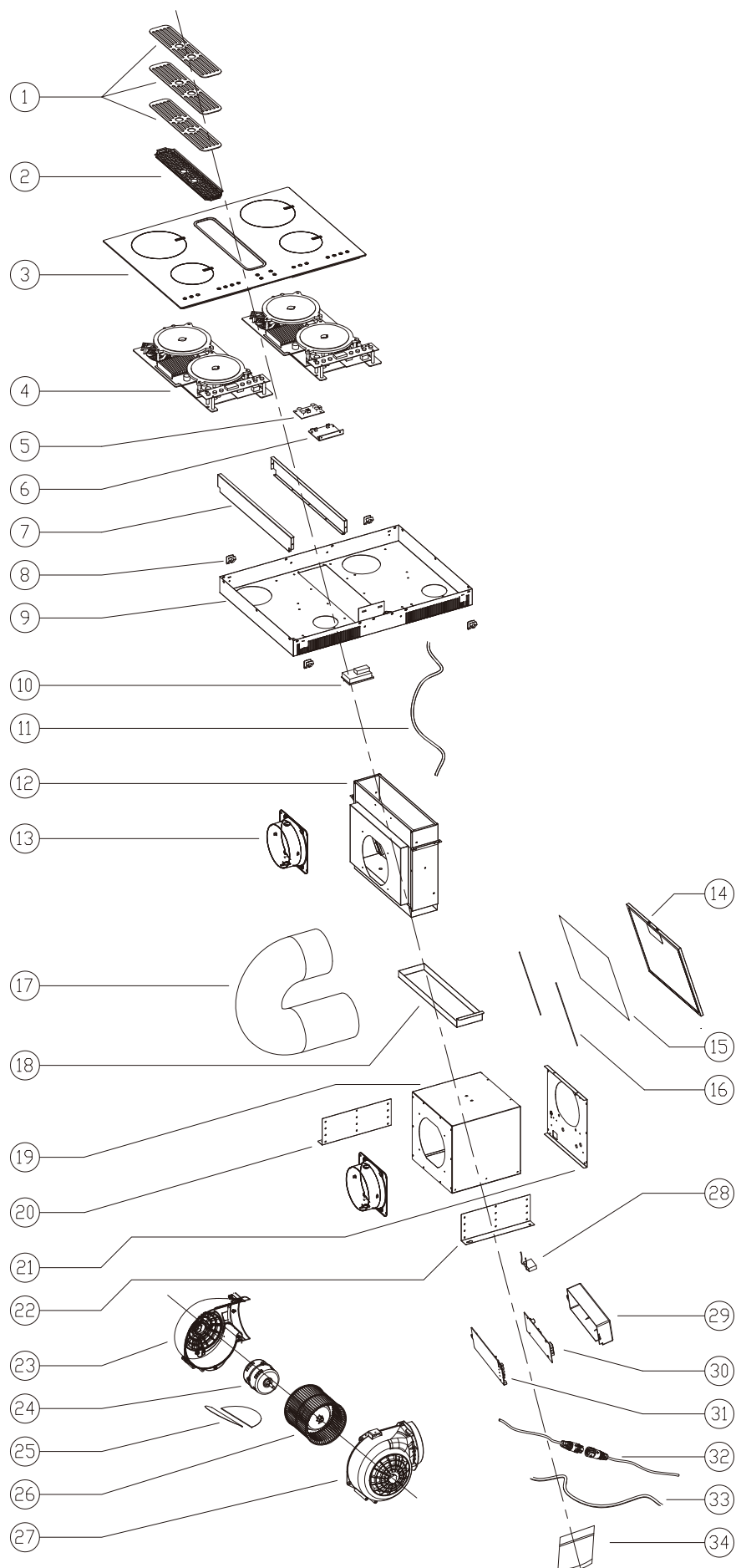
Product reference code:ICONDD70.1

Modified by:Eason

Modification:

00_2020.07.13 New document

ICONDD70.1 Exploded drawing



ICONDD70.1 parts list

No.	Ref.	Description	Description in Chinese	QTY
1	1130204808	Air inlet mesh SS	进风网(不锈钢)	1
	1150303759	Air inlet mesh BK	进风网 (黑色)	1
	1150303844	Air inlet mesh copper	进风网 (古铜色)	1
2	1150303684	Air inlet cover	进风罩	1
3	150050101286 ASS	Glass panel assembly(set)	微晶玻璃面板组件	1
4	2149800001	Induction hob circuit board assembly(set)	电磁炉线路板组件	2
5	1400500452	Switch	开关板	1
6	12001010200257	Switch fixing board	开关安装板	1
7	1130402497	Baffle plate	隔板	2
8	230990012	Fastener	卡扣	4
9	1130402736	Bottom cover	底壳	1
10	12001010200143ASS	Power box	电源盒	1
11	2400400076	Induction hob power cord	电磁炉电源线	1
12	1150303685 ASS	Inlet plenum assembly(set)	进风箱组件	1
13	1149900021	Outlet	金属出风口	2
14	1300100561	aluminium filter	铝网	1
15	1309800315	Carbon filter	活性炭棉	1
16	1309800316	Iron wire	滤网钢线	2
17	120010500034	Aluminum foil tube	铝箔管	2
18	1150303691	Oil up	油杯	1
19	AIH-36A2EM	External cavity	133外置机箱	1
20	1130402396	Left support foot	133A支撑左脚	1
21	1130402470	Outlet panel	133A出风板	1
22	1130402298	Right support foot	133A支撑右脚	1
23	12001010300019	right blower housing	风鼓右壳	1
24	1400200239	Motor	电机	1
25	12001010300005	v-flap	阀片	2
26	12001010300011	impeller	风轮	1
27	12001010300018	left blower housing	风鼓左壳	1
28	1400100080	Capacitor	电容	1
29	12001010200064	junction box cover	大电器盒盖	1
30	1400500306	PCB board	电路板	1 set
31	12001010200143	junction box bottom	大电器盒底	1
32	1400400332 ASS	Power cord	电源连接线组件	1
33	1400400229	Switch wire assembly(set)	开关线组件	1
34	1300200034 ASS	Screw bag	螺丝包	1

ICONDD70.1 Wiring diagram

AC 220–240V/50Hz

