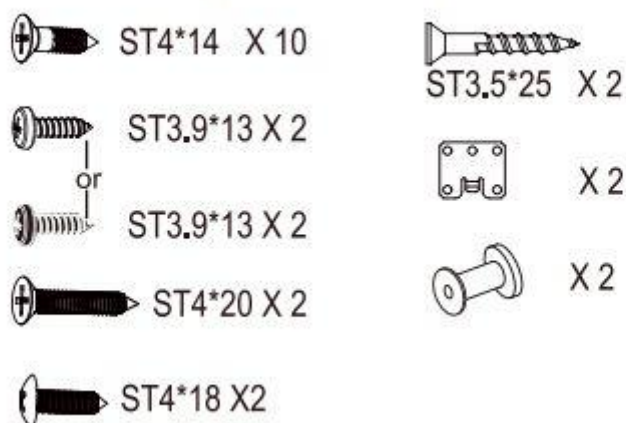




## Dishwasher:BDW45MCL

45cm door template part number 16176000001398

Installation Kit part number 670400058002

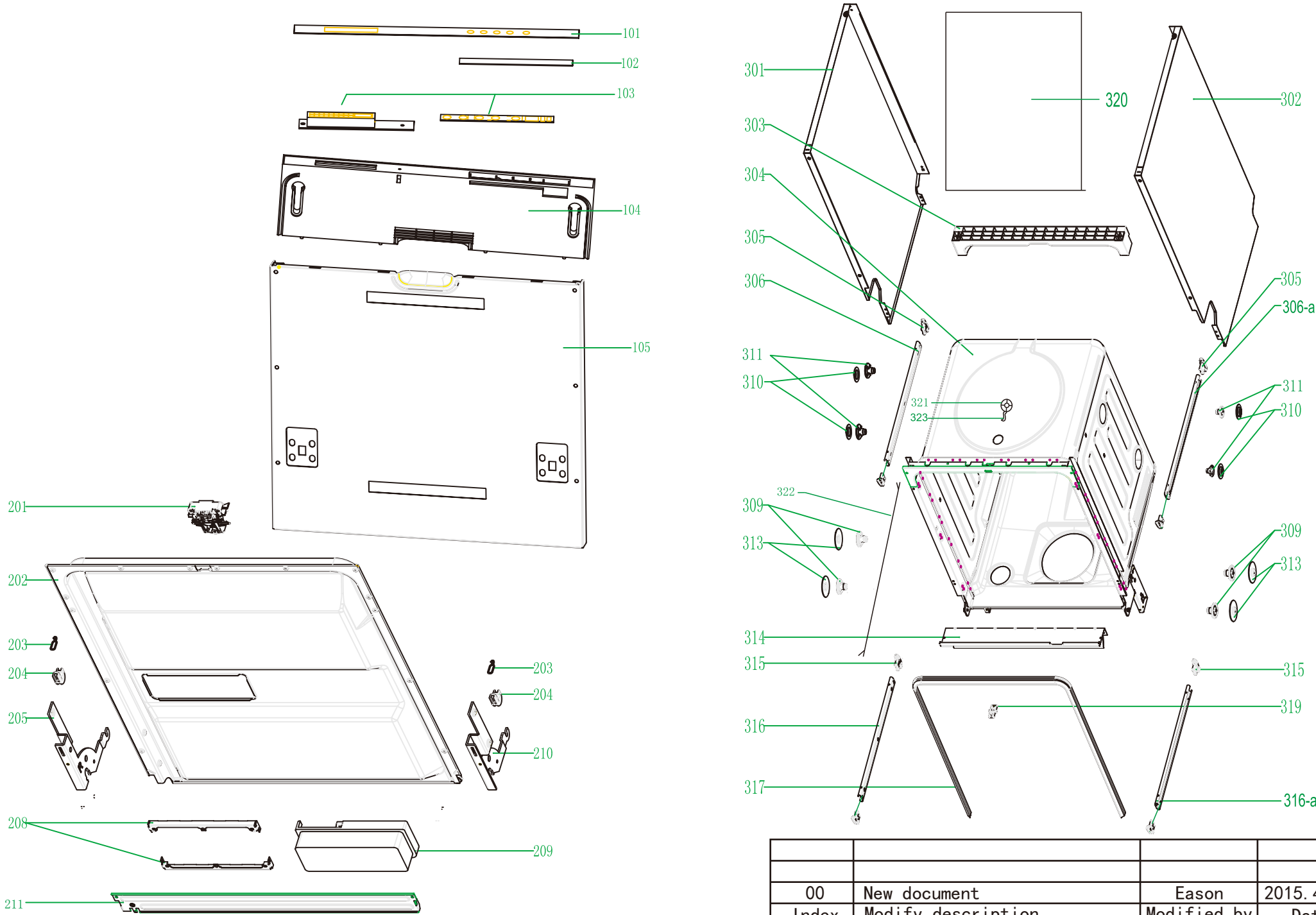


Version:00

Date:2015-04-03

Product reference code:29673094

BDW45MCL Exploded drawing(1)



00	New document	Eason	2015. 4. 3
Index	Modify description	Modified by	Date

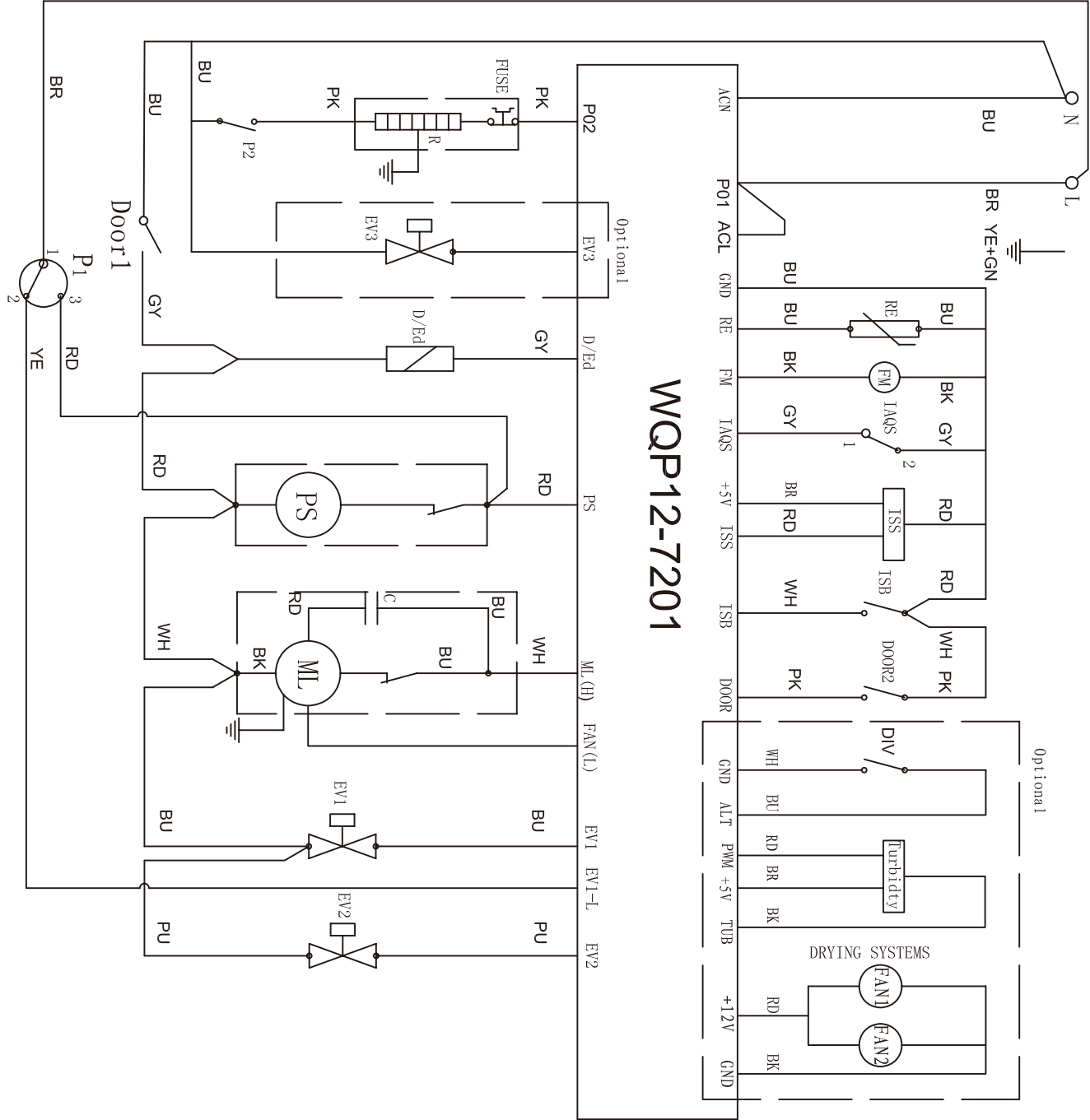
# BDW45MCL parts list

No.	Factory Code	part Description	Qty
101	673006901248	Control panel cover sticker	1
102	673002901653	touch support board	1
104	673000496854	Control Panel	1
105	672001801323	OUTER DOOR	1
201	674010030017	DOOR SWICTH ASSEMBLY	1
202	672002200326	INNER DOOR	1
203	672002300037	FRICTION STRIP HOOKING	2
204	672002300049	FRICTION STRIP HOOKING CLAMPING	2
205	672001300074	LEFT HINGE	1
208	672001700002	DISPENSER BRACKET	2
209	674000800058	DISPENSER	1
210	672001300073	RIGHT HINGE	1
211	672001300078	HINGE join board	1
301	672001602046	LEFT SIDE PANEL	1
302	672001607087	RIGHT SIDE PANEL	1
303	673003100025	UPPER back support	1
304	672001905129	tank assembly	1
305	673001300551	Cutlery shelf guider link stopper(back)	2
306	672001700023	Cutlery shelf guider(LEFT)	1
309	673001401022	basket guider supporter	4
310	673001300552	Cutlery shelf guider supporting holder	4
311	673001400317	Cutlery shelf guider supporter	4
313	673001300555	basket guider supporting holder	4
314	672000100093	anti-noise borad	1
315	673001300639	UPPER BASKET guider link stopper(back)	2
316	672001700025	UPPER BASKET guider(LEFT)	1
317	673001700133	door seal GASKET	1
319	672001400068	DOOR LOCK HOOK	1
320	673000102013	Back cover board	1
321	674000400015	head lamp	1
322	674000120002	head lamp link string	1
323	674000120021	head lamp link string	1
401	674000000186	Power cord	1
402	673001600088	AIR BREAKER NUT	1
403	673002700611	AIR BREAKER ASSEMBLY	1
404	674000700059	SOFTENER ASSEMBLY	1
405	673001300557	DRAIN pipe CLAMPING	4
408	673001300556	tub Support	2
409	670400050732	Base	1
410	673001000052	FRICTION STRIP GUIDING	6
411	672002300063	FRICTION STRIP	2
412	672000101016	DOOR SPRING	2
414	672001100016	adjust screw OF DOOR SPRING	2
417	673000101086	base cover	1
418	673001400210	foot	3

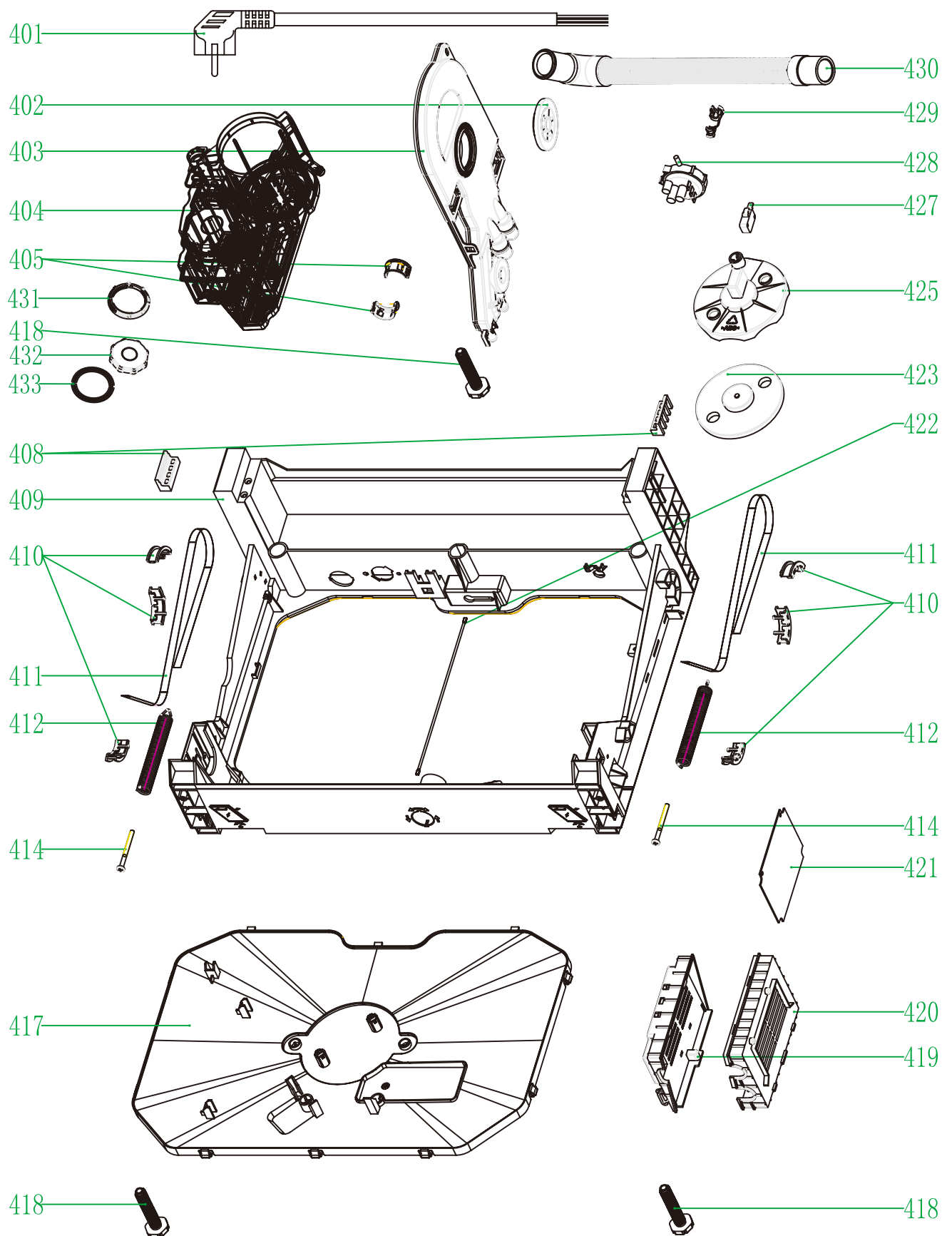
419	673002400192	pcb seat cover	1
420	673002400241	pcb seat	1
422	672001100016	Adjust pole	1
423	673001490013	FLOAT	1
425	673001400414	overflow switch seat	1
427	674010030006	overflow switch	1
428	674000302021	PRESSURE SWITCH	1
429	673001400083	power supply loom clamping	1
430	673000900354	DRAIN pipe	1
431	673001600074	SOFTENER nut	1
432	673002800168	SOFTENER cover	1
433	673001500119	SOFTENER rubber	1
504	673000903006	INNER PIPE	1
507	673001900023	water DISPENSER ASSEMBLY	1
510	673001900027	MIDDLE SPAYER	1
511	673000330032	LOWER SPRAYER	1
512	673001300548	LOWER SPRAYER seat	1
513	673002500142	PLASTIC FILTER	1
601	673001600057	SUMP NUT	1
602	673001500104	SUMP GASKET	1
603	673000900160	PVC pipe	1
604	673000901006	softener outlet pipe	1
607	673000701130	SUMP ASSEMBLY	1
608	673000900351	INNER DRAIN pipe	1
611	674000600154	Drainage pump	1
612	673002500135	main filter	1
613	673001300644	filter handle	1
614	673002500111	CYLINDR FILTER	1
615	673001500069	PUMP VIBRATION-PROOF PAD	1
616	674005600088	WASH PUMP ASSEMBLY	1
617	672002300038	motor holder	1
618	673001500111	PUMP GASKET	1
619	672000700031	940 CLAMPING	1
620	673001500115	HEATING ELEMENTS GASKET	1
621	674001100074	HEATING ELEMENTS ASSEMBLY	1
623	674000302012	WATER PRESSURE SWITCH ASSEMBLY	1
625	674000900053	Sensing device	1
626	674000210001	diverter	1
627	673001500105	diverter GASKET	1
705	673003200045	Cutlery shelf ASSEMBLY	1
706	672000810125	UPPER BASKET ASSEMBLY	1
709	672000820089	LOWER BASKET ASSEMBLY	1
710	673000900205	Inlet hose assembly	1
711	674000101011	Wiring harness	1
712	673002200165	Salt filler	1
713	673000101047	basket Handle lid (front)	2
714	673000101048	basket Handle lid (back)	2
715	672000202162	BASKET HANDLE adhibit piece	2
103+421	674001002549	pcb	1
306-a	672001700024	Cutlery shelf guider(RIGHT)	1
316-a	672001700026	UPPER BASKET guider(RIGHT)	1

# BDW45MCL Wiring diagram

220-240V/50~60HZ



# BDW45MCL Exploded drawing(2)



# BDW45MCL Exploded drawing(3)

